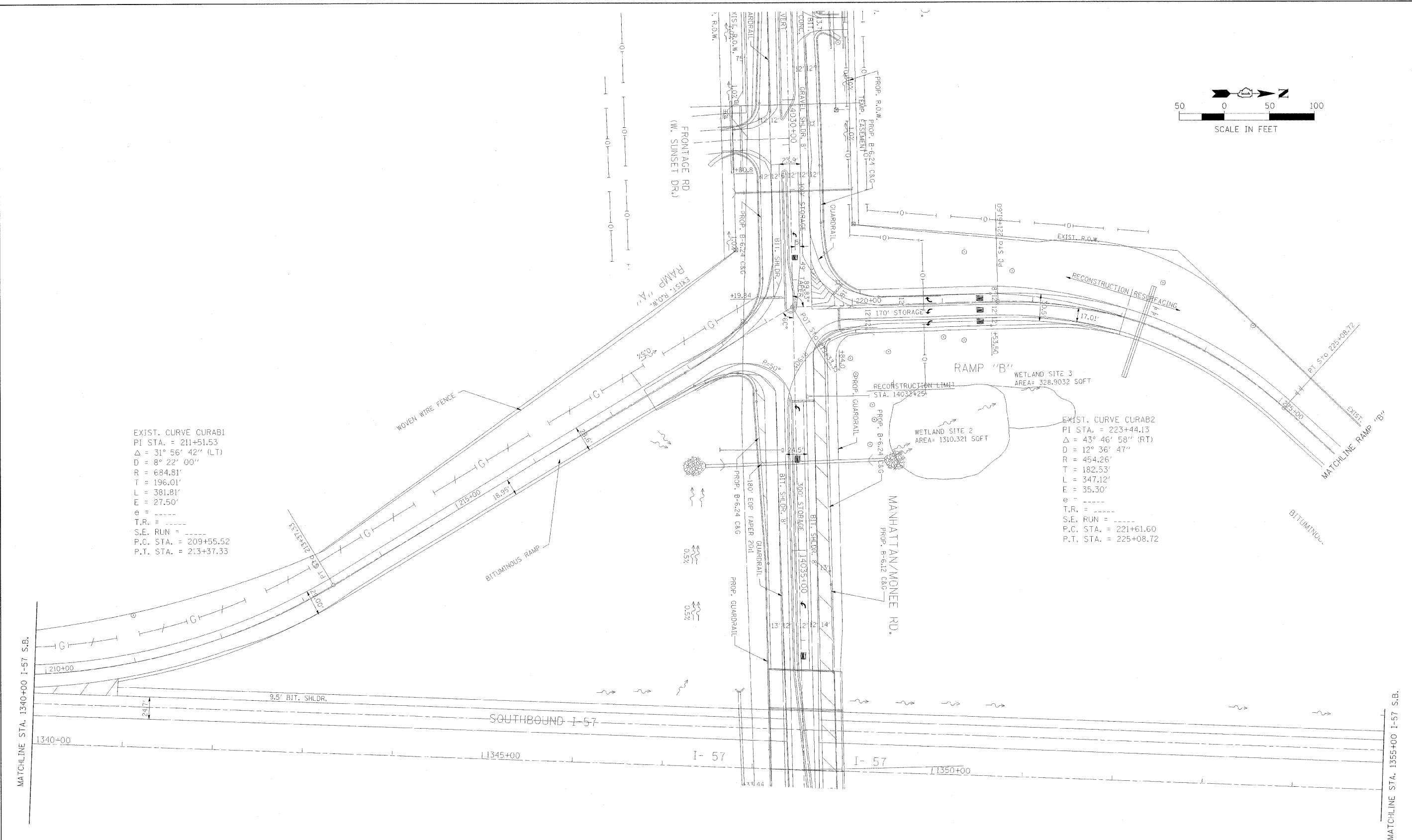


EXIST. CURVE CURAB1
 PI STA. = 211+51.53
 $\Delta = 31^\circ 56' 42''$ (LT)
 $D = 8^\circ 22' 00''$
 $R = 684.81'$
 $T = 196.01'$
 $L = 381.81'$
 $E = 27.50'$
 $e = \text{-----}$
 $T.R. = \text{-----}$
 $S.E. \text{ RUN} = \text{-----}$
 $P.C. \text{ STA.} = 209+55.52$
 $P.T. \text{ STA.} = 213+37.33$

EXIST. CURVE CURAB2
 PI STA. = 223+44.13
 $\Delta = 43^\circ 46' 58''$ (RT)
 $D = 12^\circ 36' 47''$
 $R = 454.26'$
 $T = 182.53'$
 $L = 347.12'$
 $E = 35.30'$
 $e = \text{-----}$
 $T.R. = \text{-----}$
 $S.E. \text{ RUN} = \text{-----}$
 $P.C. \text{ STA.} = 221+61.60$
 $P.T. \text{ STA.} = 225+08.72$



FOR REFERENCE ONLY
 CONSTRUCTED
 UNDER CONTRACT 62253

FILE NAME =	USER NAME = #USER#	DESIGNED -	REVISED -
#FILEL#		DRAWN -	REVISED -
	PLOT SCALE = #SCALE#	CHECKED -	REVISED -
	PLOT DATE = #DATE#	DATE -	REVISED -

**STATE OF ILLINOIS
 DEPARTMENT OF TRANSPORTATION**

**I-57 PROPOSED LIGHTING PLAN,
 STA. 1340+00 TO 1355+00 (SB)**

SCALE: 1"=50'-0" SHEET NO. OF SHEETS STA. 1340+00 TO STA. 1355+00

F.A.I. RTE.	SECTION	COUNTY	TOTAL SHEETS	SHEET NO.
157	2008-082L	COOK/WILL	49	19
CONTRACT NO. 60F84				
[ILLINOIS] FED. AID PROJECT				