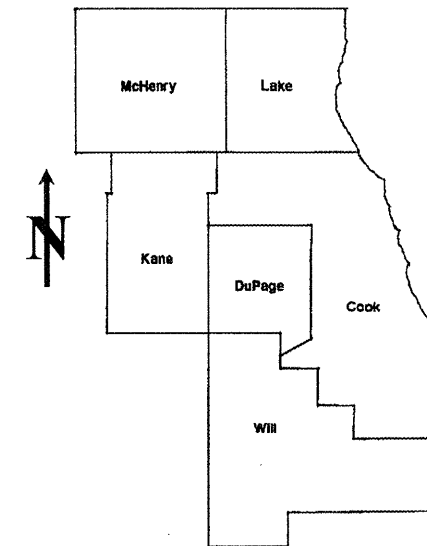


ROUTE	SECTION	COUNTY	TOTAL SHEETS	SHEET NUMBER
I-290	2009-030 PP	COOK & DUPAGE	15	1

**STATE OF ILLINOIS**  
**DEPARTMENT OF TRANSPORTATION**  
**DIVISION OF HIGHWAYS**  
**DISTRICT ONE**  
**PROPOSED HIGHWAY PLANS**

**CONTRACT NO. 60G29**

D-91-360-09



LOCATION OF IMPROVEMENT INDICATED THUS:

FOR INDEX OF SHEETS SEE SHEET 2

FAI 290: I-290 (EISENHOWER EXPRESSWAY)  
 IL 64 (NORTH AVE.) TO I-90/94  
 SECTION: 2009-030 PP  
 PAVEMENT PATCHING  
 COOK & DUPAGE COUNTIES  
 C-91-360-09  
 PROJECT: *IM-290-4(112) 075*

DISTRICT ONE - DESIGN - PLAN PREPARATION ENGINEER:  
 KEN ENG / (847) 705-4247

**CONTRACT NO. 60G29**

**STATE OF ILLINOIS**  
**DEPARTMENT OF TRANSPORTATION**  
**DIVISION OF HIGHWAYS**  
 SUBMITTED: MARCH 24, 20 09  
*Diana M. O'Keefe*  
 DEPUTY DIRECTOR OF HIGHWAYS, REGION ENGINEER  
May 8, 20 09  
*Charles J. Ingersoll*  
 ENGINEER OF DESIGN AND ENVIRONMENT  
May 8, 20 09  
*Christine M. Reed*  
 DIRECTOR, DIVISION OF HIGHWAYS

**PRINTED BY THE AUTHORITY**  
**OF THE STATE OF ILLINOIS**

**J.U.L.I.E.: JOINT UTILITY LOCATION**  
**INFORMATION FOR EXCAVATION**  
**(312) 744-7000**

INDEX OF SHEETS

<u>SHEET NO.</u>	<u>DESCRIPTION</u>
1	TITLE SHEET
2	INDEX OF SHEETS, STATE STANDARDS AND GENERAL NOTES
3	SUMMARY OF QUANTITIES
4	GENERAL LOCATION MAP
5	SUMMARY OF PATCHING SCHEDULE
6-9	PATCHING SCHEDULE
10	BUTT JOINT AND HMA TAPER DETAILS
11	FREEWAY ENTRANCE AND EXIT RAMP CLOSURE DETAILS
12	FREEWAY SINGLE & MULTI-LANE WEAVE
13-14	MULTI-LANE FREEWAY PAVEMENT MARKING DETAILS
15	FREEWAY SHOULDER CLOSURES AND PARTIAL RAMP CLOSURES

STATE STANDARDS

<u>STANDARD NO.</u>	<u>DESCRIPTION</u>
000001-05	TYPICAL SYMBOLS, ABBREVIATIONS AND PATTERNS
701101-02	OFF-RD. OPERATIONS, MULTILANE
701400-03	APPROACH TO LANE CLOSURE, FREEWAY/EXPRESSWAY
701401-05	LANE CLOSURE, FREEWAY/EXPRESSWAY
701411-05	LANE CLOSURE, MULTILANE, AT ENTRANCE OR EXIT RAMP
701426-03	LANE CLOSURE, MULTILANE, INTERMITTENT OR MOVING OPERATION
701446-01	TWO LANE CLOSURE, FREEWAY/EXPRESSWAY
701901-01	TRAFFIC CONTROL DEVICES

HOT-MIX ASPHALT MIXTURE REQUIREMENTS

<u>MIXTURE TYPE</u>	<u>AC TYPE</u>	<u>AIR VOIDS (%)</u>
HOT-MIX ASPHALT SURFACE COURSE, MIX "D", N90 (IL 9.5MM), 2"	PG 64-22	4% @ 90 GYR

THE UNIT WEIGHT USED TO CALCULATE ALL HOT-MIX ASPHALT SURFACE MIXTURE QUANTITIES IS 112 LBS/SY/IN.

GENERAL NOTES

BEFORE STARTING ANY EXCAVATION, THE CONTRACTOR SHALL CALL "JULIE" AT (800) 892-0123 OR 811 FOR FIELD LOCATIONS OF BURIED ELECTRIC, TELEPHONE AND GAS FACILITIES. (48 HOUR NOTIFICATION REQUIRED)

BEFORE STARTING ANY EXCAVATION, THE CONTRACTOR SHALL CALL "C.U.A.N." (CHICAGO UTILITY ALERT NETWORK) AT (312) 744-7000 FOR FIELD LOCATIONS OF BURIED ELECTRIC, TELEPHONE AND GAS UTILITIES (48 HOUR NOTIFICATION IS REQUIRED).

THE CONTRACTOR WILL NOT BE ALLOWED TO SET UP A YARD OR FIELD OFFICE ON STATE (OR TOLLWAY) PROPERTY WITHOUT WRITTEN PERMISSION FROM THE DEPARTMENT (OR ISTHA).

WHEN ARTIFICIAL LIGHTING IS UTILIZED IN NIGHT OPERATIONS, THE CONTRACTOR SHALL EXERCISE THE UTMOST PRECAUTIONS IN PREVENTING ADVERSE VISABILITY TO THE MOTORING PUBLIC AND ADJOINING RESIDENTIAL AREAS.

ANY PAVEMENT MARKINGS AND RAISED REFLECTIVE PAVEMENT MARKERS OBLITERATED BY MILLING AND RESURFACING OPERATIONS ON SIDE STREETS AND ENTRANCES SHALL BE REPLACED AND PAID FOR IN KIND.

BEFORE BEGINNING ANY WORK, THE CONTRACTOR SHALL RETAIN AND RECORD FOR FUTURE REFERENCE, ALL EXISTING PAVEMENT MARKING LINES (AND RAISED REFLECTIVE PAVEMENT MARKERS) IN ORDER THAT THESE LOCATIONS CAN BE RE-ESTABLISHED FOR STRIPING. EXACT LOCATIONS OF ALL PAVEMENT MARKINGS SHALL BE AS DIRECTED BY THE ENGINEER.

ALL PAVEMENT PATCHING LOCATIONS WILL BE DETERMINED IN THE FIELD BY THE ENGINEER.

THE CONTRACTOR SHALL CONTACT THE DISTRICT ONE TRAFFIC CONTROL SUPERVISOR AT (847) 705-4155 A MINIMUM OF 72 HOURS IN ADVANCE OF BEGINNING WORK.

THE ENGINEER SHALL CONTACT MR. WALLY CZARNY, AREA TRAFFIC FIELD ENGINEER AT (773) 685-8386 MINIMUM OF TWO (2) WEEKS PRIOR TO PLACEMENT OF PERMANENT PAVEMENT MARKINGS.

THE EXISTING ROADWAY TYPICAL SECTION FOR HOT-MIX ASPHALT SURFACES IS ASSUMED TO HAVE A 3 INCH HOT-MIX ASPHALT OVERLAY ON TOP OF A TEN INCH CONCRETE BASE. THE EXISTING ROADWAY TYPICAL SECTION FOR CONCRETE SURFACES IS ASSUMED TO BE 10 INCHES OF FULL DEPTH PORTLAND CEMENT CONCRETE PAVEMENT.

ALL PAVEMENT PATCHES ON HOT-MIX ASPHALT SURFACES SHOWN IN THE PLANS ARE TO BE TWO (2) INCH MILL AND RESURFACE ONLY. THE MINIMUM WIDTH FOR MILLING AND PATCHING SHALL BE TWO (2) FEET. ALL PAVEMENT PATCHES ON CONCRETE SURFACES ARE TO BE 10 INCH CLASS D PATCHES.

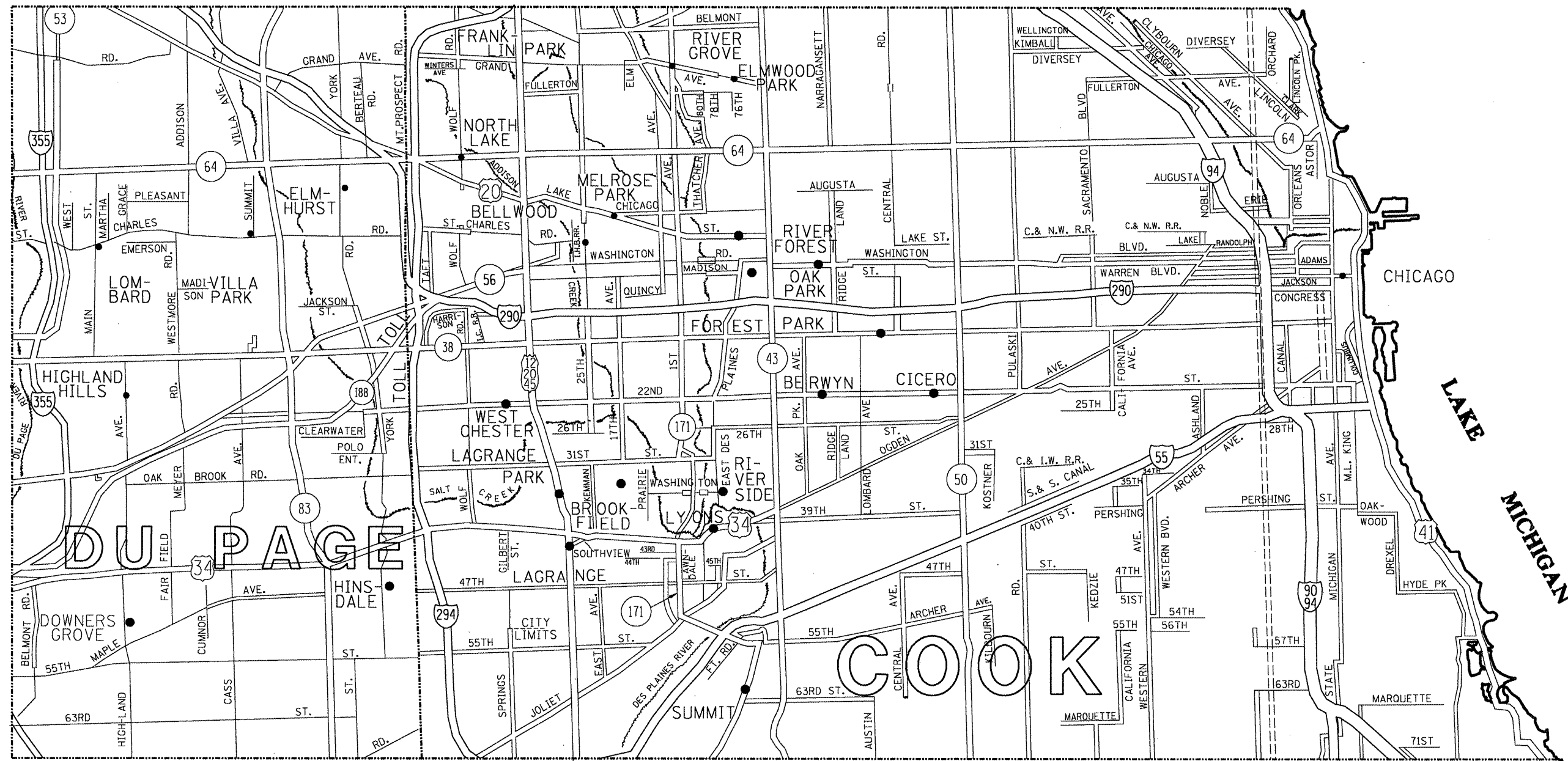
THE COST OF ANY PARTIAL OR FULL DEPTH PATCHING REQUIRED AFTER THE REMOVAL OF THE EXISTING 2 INCH HOT-MIX ASPHALT SURFACE SHALL BE PAID FOR IN ACCORDANCE WITH ARTICLE 109.04 OF THE STANDARD SPECIFICATIONS.

NO WORK IS TO BE DONE WITHIN 50 FEET OF THE EDGE OF ANY RAILROAD CROSSING.

URBAN  
90% FED.  
10% STATE

SUMMARY OF QUANTITIES			CONSTRUCTION TYPE CODE						SUMMARY OF QUANTITIES			CONSTRUCTION TYPE CODE							
CODE NO	ITEM	UNIT	TOTAL QUANTITIES	COOK COUNTY I000	DUPAGE COUNTY I000					CODE NO	ITEM	UNIT	TOTAL QUANTITIES						
40600200	BITUMINOUS MATERIALS (PRIME COAT)	TON	2	1.9	0.1														
40600300	AGGREGATE (PRIME COAT)	TON	15	14	1														
40600400	MIXTURE FOR CRACKS, JOINTS, AND FLANGEWAYS	TON	23	22	1														
40600895	CONSTRUCTING TEST STRIP	EACH	1	0.9	0.1														
40600982	HOT-MIX ASPHALT SURFACE REMOVAL - BUTT JOINT	SO YD	217	206	11														
40603345	HOT-MIX ASPHALT SURFACE COURSE, MIX "D", N90	TON	486	461	25														
44000157	HOT-MIX ASPHALT SURFACE REMOVAL, 2"	SO YD	4337	4110	227														
67000400	ENGINEER'S FIELD OFFICE, TYPE A	CAL MO	3	2.8	0.2														
67100100	MOBILIZATION	L SUM	1	0.9	0.1														
70300530	PAVEMENT MARKING TAPE, TYPE III 5"	FOOT	2100	1995	105														
70301000	WORK ZONE PAVEMENT MARKING REMOVAL	SO FT	875	831	44														
*78000200	THERMOPLASTIC PAVEMENT MARKING - LINE 4"	FOOT	6827	6487	340														
*78004220	PREFORMED PLASTIC PAVEMENT MARKING, TYPE B - INLAID - LINE 5"	FOOT	2100	1995	105														
*78100100	RAISED REFLECTIVE PAVEMENT MARKER	EACH	210	200	10														
78300200	RAISED REFLECTIVE PAVEMENT MARKER REMOVAL	EACH	210	200	10														
X7011015	TRAFFIC CONTROL AND PROTECTION (EXPRESSWAYS)	L SUM	1	0.9	0.1														
© 20076600	TRAINEEES	HOUR	500	500															

\* SPECIALTY ITEM  
© Y880



FILE NAME =  
 c:\p\work\p10101\w1grendp\10125189\Design.dgn  
 PLOT SCALE = 100.0000 / IN.  
 PLOT DATE = 3/14/2009

USER NAME = w1grendp	DESIGNED -	REVISED -
DRAWN -	REVISED -	REVISED -
CHECKED -	REVISED -	REVISED -
DATE -	REVISED -	REVISED -

**STATE OF ILLINOIS  
 DEPARTMENT OF TRANSPORTATION**

<b>GENERAL LOCATION MAP    I-290 (EISENHOWER EXPRESSWAY)</b>			
SCALE:	SHEET NO.	OF SHEETS	STA. TO STA.

F.A.I. RTE. 290	SECTION 2009-030 PP	COUNTY COOK	TOTAL SHEETS 15	SHEET NO. 4
CONTRACT NO. 60G29				
ILLINOIS FED. AID PROJECT				

<b>SUMMARY - I-290 (EISENHOWER EXPRESSWAY)</b>	<b>HMA 2" MILL &amp; RESURFACE (SY)</b>
<b>I-290 (EISENHOWER) RAMPS</b>	
1ST AVE. (EXIT TO WB EISENHOWER)	27
INDEPENDENCE RAMP (ENTRANCE TO WB EISENHOWER)	180
HOMAN RAMP (ENTRANCE TO EB EISENHOWER)	220
OAKLEY RAMP (EXIT TO WB EISENHOWER)	140
PAULINA RAMP (ENTRANCE TO WB EISENHOWER)	100
FRANKLIN ST. RAMPS (EXIT & ENTRANCE TO EB & WB EISENHOWER)	140
KOSTNER RAMP (EXIT TO NB AND SB EISENHOWER)	962
EISENHOWER AT ROOSEVELT EXTENSION (GATES TO I-294 OVERPASS)	155
<b>I-290 (EISENHOWER) MAINLINE</b>	
EB EISENHOWER AT NORTH AVE.	227
EB EISENHOWER (E/O WOLF RD.)	93
WB EISENHOWER AT BUTTERFIELD RD.)	76
EB & WB EISENHOWER (WELLS TO CENTRAL)	2017
<b>SUMMARY TOTALS:</b>	<b>4337</b>
	<b>SY</b>

NOTE:

DUE TO ROUNDING, SUMMARY TOTALS MAY VARY SLIGHTLY FROM THE TOTALS ON THE PATCHING SCHEDULES.

ROUTE: 1st Ave. (Exit to WB Eisenhower) - HMA SURFACE

CROSS STREETS		DIRECTION (EB/WB) (NB/SB)	LANE NO. (1, 2, 3)	PAVEMENT PATCH WIDTH	PAVEMENT PATCH LENGTH	REPAIR AREA (SQ FT)	REPAIR AREA (SQ YD)
FROM	TO						
Exit	I-290	WB	Ramp	24	10	240	27

TOTALS: 10 FT 27 SY

ROUTE: EB Eisenhower at North Ave. - HMA SURFACE

CROSS STREETS		DIRECTION (EB/WB) (NB/SB)	LANE NO. (1, 2, 3)	PAVEMENT PATCH WIDTH	PAVEMENT PATCH LENGTH	REPAIR AREA (SQ FT)	REPAIR AREA (SQ YD)
FROM	TO						
I-290	North Ave	EB	1	12	75	900	100
				12	25	300	33
				12	55	660	73
				12	15	180	20

TOTALS: 170 FT 227 SY

ROUTE: Independence Ramp (Entrance to WB Eisenhower) - HMA SURFACE

CROSS STREETS		DIRECTION (EB/WB) (NB/SB)	LANE NO. (1, 2, 3)	PAVEMENT PATCH WIDTH	PAVEMENT PATCH LENGTH	REPAIR AREA (SQ FT)	REPAIR AREA (SQ YD)
FROM	TO						
Entrance Ramp	Independence	WB	1	12	75	900	100
				12	20	240	27
				12	15	180	20
				12	25	300	33

TOTALS: 135 FT 180 SY

ROUTE: Homan Ramp (Entrance to EB Eisenhower) - HMA SURFACE

CROSS STREETS		DIRECTION (EB/WB) (NB/SB)	LANE NO. (1, 2, 3)	PAVEMENT PATCH WIDTH	PAVEMENT PATCH LENGTH	REPAIR AREA (SQ FT)	REPAIR AREA (SQ YD)
FROM	TO						
Entrance Ramp	Homan	EB	1	12	165	1980	220

TOTALS: 165 FT 220 SY

ROUTE: Oakley Ramp (Exit to WB Eisenhower) - HMA SURFACE

CROSS STREETS		DIRECTION (EB/WB) (NB/SB)	LANE NO. (1, 2, 3)	PAVEMENT PATCH WIDTH	PAVEMENT PATCH LENGTH	REPAIR AREA (SQ FT)	REPAIR AREA (SQ YD)
FROM	TO						
Exit Ramp	Oakley	EB	1	12	105	1260	140

TOTALS: 105 FT 140 SY

FILE NAME =  
c:\pw\_work\pwidot\wilgreendp\d0125109\Design.dgn

USER NAME = wilgreendp  
DESIGNED -  
DRAWN -  
PLOT SCALE = 100.0000' / IN.  
CHECKED -  
PLOT DATE = 3/14/2009

DESIGNED -  
DRAWN -  
CHECKED -  
DATE -

REVISED -  
REVISED -  
REVISED -  
REVISED -

STATE OF ILLINOIS  
DEPARTMENT OF TRANSPORTATION

PATCHING SCHEDULE  
I-290 (EISENHOWER EXPRESSWAY)

SCALE: SHEET NO. OF SHEETS STA. TO STA.

F.A.I. RTE. 290	SECTION 2009-030 PP	COUNTY COOK & DUP.	TOTAL SHEETS 15	SHEET NO. 6
FED. ROAD DIST. NO. 1 [ILLINOIS] FED. AID PROJECT				

CONTRACT NO. 60C29

ROUTE: Paulina Ramp (Entrance to WB Eisenhower) - HMA SURFACE

CROSS STREETS		DIRECTION (EB/WB) (NB/SB)	LANE NO. (1, 2, 3)	PAVEMENT PATCH WIDTH	PAVEMENT PATCH LENGTH	REPAIR AREA (SQ FT)	REPAIR AREA (SQ YD)
FROM	TO						
Ramp	Paulina	WB	1	12	75	900	100

TOTALS: 75 FT 100 SY

ROUTE: Franklin St. Ramp (Exit & Entrance to EB & WB Eisenhower - HMA SURFACE

CROSS STREETS		DIRECTION (EB/WB) (NB/SB)	LANE NO. (1, 2, 3)	PAVEMENT PATCH WIDTH	PAVEMENT PATCH LENGTH	REPAIR AREA (SQ FT)	REPAIR AREA (SQ YD)
FROM	TO						
I-290	Exit	EB	Ramp	12	15	180	20
				12	15	180	20
				12	15	180	20
				12	15	180	20
I-290	Entrance	WB	Ramp	12	15	180	20
				12	15	180	20
				12	15	180	20

TOTALS: 105 FT 140 SY

ROUTE: EB I-290 Eisenhower - E/O Wolf Rd - HMA SURFACE

CROSS STREETS		DIRECTION (EB/WB) (NB/SB)	LANE NO. (1, 2, 3)	PAVEMENT PATCH WIDTH	PAVEMENT PATCH LENGTH	REPAIR AREA (SQ FT)	REPAIR AREA (SQ YD)
FROM	TO						
Wolf	E. of Wolf rd	EB	1	12	45	540	60
		EB	1	12	25	300	33

TOTALS: 70 FT 93 SY

ROUTE: WB Eisenhower at Butterfield - HMA SURFACE

CROSS STREETS		DIRECTION (EB/WB) (NB/SB)	LANE NO. (1, 2, 3)	PAVEMENT PATCH WIDTH	PAVEMENT PATCH LENGTH	REPAIR AREA (SQ FT)	REPAIR AREA (SQ YD)
FROM	TO						
Butterfield	NB 53/ I-290	WB	1	12	20	240	27
			1	12	12	144	16
			1	12	25	300	33

TOTALS: 57 FT 76 SY

ROUTE: I-290 (Eisenhower) Kostner Exit - HMA SURFACE

CROSS STREETS		DIRECTION (EB/WB) (NB/SB)	LANE NO. (1, 2, 3)	PAVEMENT PATCH WIDTH	PAVEMENT PATCH LENGTH	REPAIR AREA (SQ FT)	REPAIR AREA (SQ YD)
FROM	TO						
Kostner	North / South Bound	NB	1	12	100	1200	133
		NB	2	12	100	1200	133
		SB	1	12	100	1200	133
		SB	2	12	100	1200	133
		RAMP	exit	12	20	240	27
		SB	1	12	50	600	67
		SB	2	12	50	600	67
		NB	1	12	50	600	67
		NB	2	12	50	600	67
		SB	1	12	50	600	67
		SB	2	12	50	600	67

TOTALS: 720 FT 962 SY

ROUTE: Eisenhower At Roosevelt Extension (Gates to I-294 Overpass) - HMA SURFACE

CROSS STREETS		DIRECTION (EB/WB) (NB/SB)	LANE NO. (1, 2, 3)	PAVEMENT PATCH WIDTH	PAVEMENT PATCH LENGTH	REPAIR AREA (SQ FT)	REPAIR AREA (SQ YD)
FROM	TO						
Roosevelt Gates	I-294 Overpass	EB	1	12	25	300	33
			1	12	25	300	33
			1	2	400	800	89

TOTALS: 450 FT 155 SY



ROUTE: EB & WB Eisenhower (Wells to Central) - HMA SURFACE

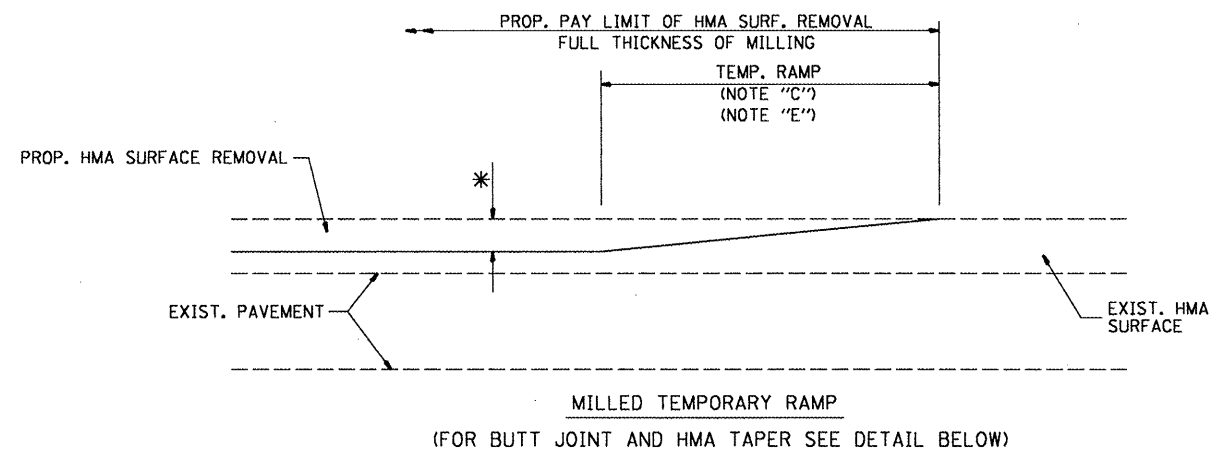
CROSS STREETS		DIRECTION (EB/WB (NB/SB)	LANE NO. (1, 2, 3)	PAVEMENT PATCH WIDTH	PAVEMENT PATCH LENGTH	REPAIR AREA (SQ FT)	REPAIR AREA (SQ YD)
FROM	TO						
Wells	Central Park	WB	1	12	20	240	27
			2	12	20	240	27
			3	12	20	240	27
			1	12	20	240	27
			3	12	10	120	13
			3	12	15	180	20
			4	12	15	180	20
			3	12	50	600	67
			3	12	20	240	27
			2	12	10	120	13
			3	12	10	120	13
			4	12	10	120	13
			2,3	2	50	100	11
			3,4	2	50	100	11
			1	12	10	120	13
			2	12	10	120	13
			3	12	10	120	13
			4	12	10	120	13
			4	12	10	120	13
			1	12	10	120	13
			2	12	10	120	13
			3	12	10	120	13
			4	12	10	120	13
			3,4	2	50	100	11
			2,3	2	75	150	17
			3,4	2	125	250	28
			2,3	2	200	400	44
			3,4	2	100	200	22
			3,4	2	200	400	44
			3	12	15	180	20
			4	12	15	180	20
			3,4	2	50	100	11
			3	12	10	120	13
			4	12	15	180	20
			3,4	2	100	200	22
			2	12	10	120	13
			2,3	2	15	30	3
			1	12	10	120	13
			2	12	10	120	13
			3	12	10	120	13
			4	12	10	120	13
			1,2	2	50	100	11
			2,3	2	75	150	17
			3,4	2	75	150	17
			3,4	2	75	150	17
Central Park	Wells	EB	3,4	2	50	100	11
			3	12	15	180	20
			1	12	15	180	20
			2	12	15	180	20
			3	12	15	180	20
			3	12	25	300	33
			2	12	15	180	20
			3	12	15	180	20
			3	12	15	180	20
			3	12	20	240	27
			2	12	15	180	20
			2,3	2	50	100	11
			3,4	2	50	100	11

ROUTE: EB & WB Eisenhower (Wells to Central) - HMA SURFACE

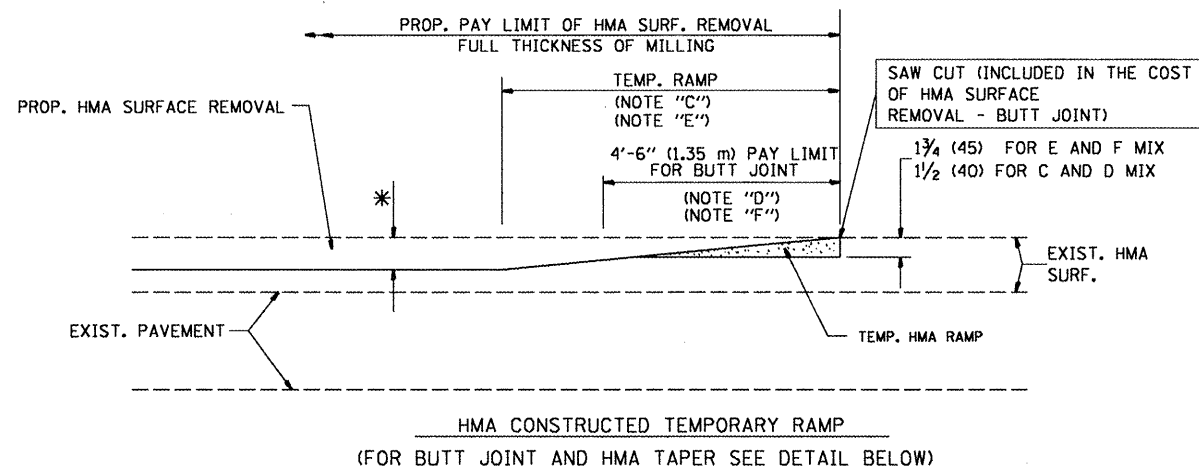
CROSS STREETS		DIRECTION (EB/WB (NB/SB)	LANE NO. (1, 2, 3)	PAVEMENT PATCH WIDTH	PAVEMENT PATCH LENGTH	REPAIR AREA (SQ FT)	REPAIR AREA (SQ YD)
FROM	TO						
Central Park	Wells	EB	3,4	2	75	150	17
			3,4	2	75	150	17
			2,3	2	75	150	17
			3,4	2	150	300	33
			1	12	20	240	27
			2	12	15	180	20
			3	12	15	180	20
			3	12	15	180	20
			4	12	15	180	20
			2,3	2	125	250	28
			3,4	2	50	100	11
			2,3	2	100	200	22
			3,4	2	75	150	17
			1	12	30	360	40
			2	12	20	240	27
			3	12	20	240	27
			4	12	15	180	20
			3	12	15	180	20
			4	12	15	180	20
			2	12	15	180	20
			3	12	15	180	20
			4	12	15	180	20
			4	12	15	180	20
			2	12	15	180	20
			3	12	15	180	20
			4	12	15	180	20
			4	12	15	180	20
			2	12	15	180	20
			3	12	15	180	20
			4	12	15	180	20
			4	12	15	180	20
			2,3	2	50	100	11
			3	12	10	120	13
			4	12	10	120	13
			2,3	2	50	100	11
			3	12	10	120	13
			4	12	10	120	13
			3	12	20	240	27
			3	12	25	300	33
			2	12	15	180	20
			2	12	15	180	20
			3	12	10	120	13
			4	12	10	120	13
			1	12	10	120	13
			2	12	10	120	13
			3	12	10	120	13
			4	12	10	120	13
			1	12	10	120	13
			2	12	10	120	13
			3	12	10	120	13
			4	12	10	120	13
			1	12	10	120	13
			2	12	10	120	13
			3	12	10	120	13
			4	12	10	120	13

TOTALS: 3450 FT 2017 SY

Design.dgn 3/14/2009 11:13:18 AM User=wilgreendp

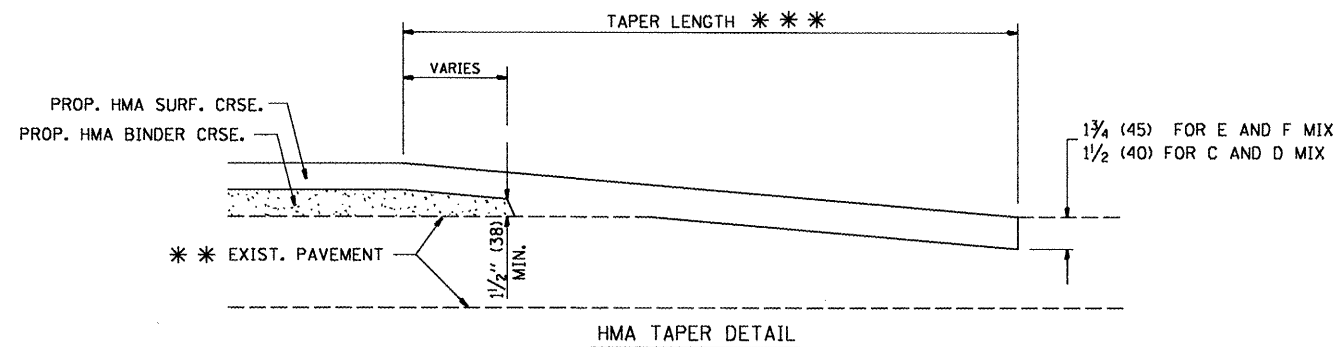
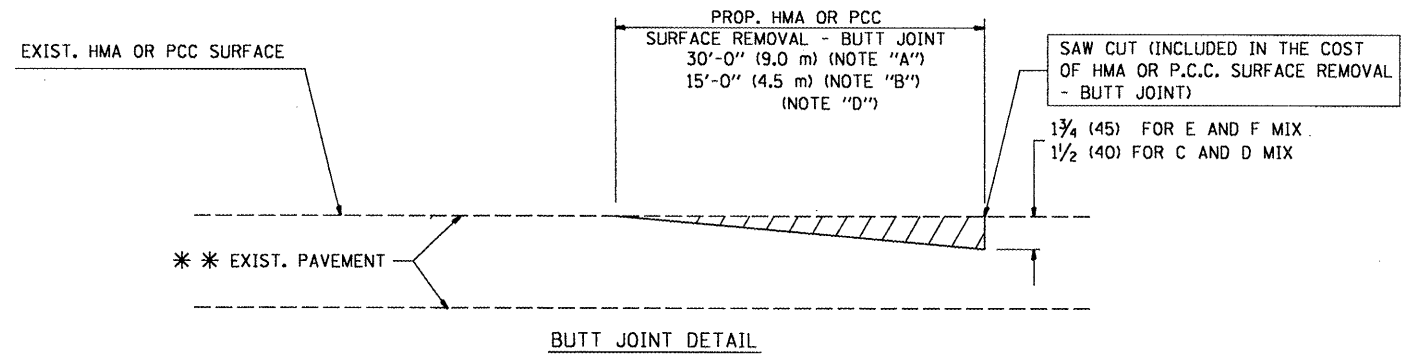


**OPTION 1**



**OPTION 2**

**TYPICAL TEMPORARY RAMP**



**TYPICAL BUTT JOINT AND HMA TAPER FOR RESURFACING ONLY**

\*\*\* PC CONCRETE, HMA OR HMA RESURFACED PAVEMENT.

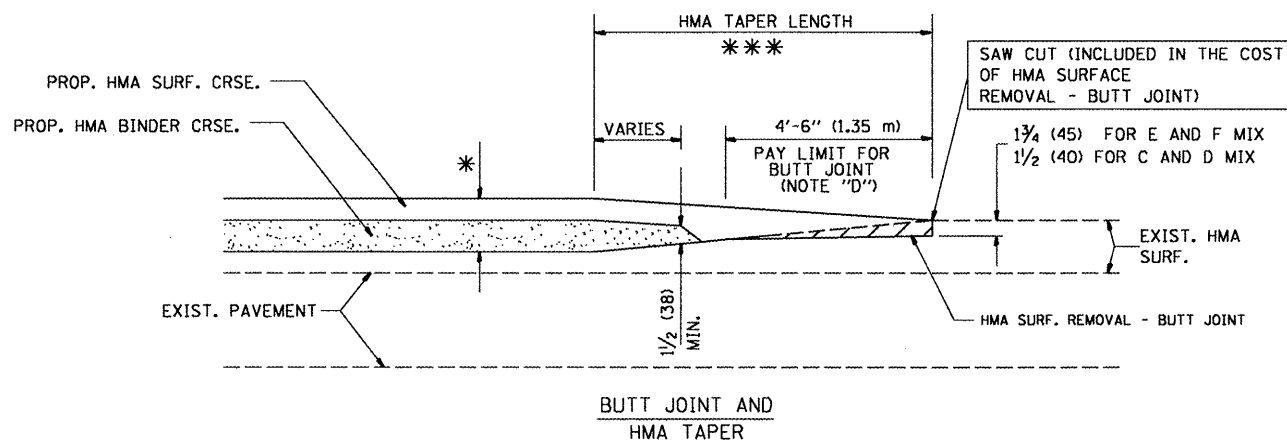
**NOTES**

- A: MAINLINE ROADWAYS AND MAJOR SIDE ROADS.
  - B: MINOR SIDE ROADS.
  - C: THE TEMP. RAMP SHALL BE CONSTRUCTED IMMEDIATELY UPON REMOVAL OF THE EXISTING HMA SURFACE.
  - D: THE BUTT JOINT SHALL BE CONSTRUCTED IMMEDIATELY PRIOR TO PLACING THE PROPOSED HMA COURSES.
  - E: TAPER THE TEMP. RAMP AT A RATE OF 3'-0" (900 mm) PER 1 INCH (25 mm) OF MILLING THICKNESS.
  - F: INSTALLATION AND REMOVAL OF THE 4'-6" (1.35 m) TEMP. RAMP IS INCLUDED IN COST OF HMA SURFACE REMOVAL - BUTT JOINT
  - G: SEE ARTICLE 406.08 AND 406.14 OF THE STANDARD SPECIFICATIONS FOR "HMA AND/OR PCC SURFACE REMOVAL, BUTT JOINT".
- \* SEE TYPICAL SECTIONS FOR MILLING THICKNESS.
- \*\*\* 20'-0" (6.1 m) PER 1 (25) RESURFACING (NOTE "A")  
 10'-0" (3.0 m) PER 1 (25) RESURFACING (NOTE "B")

**BASIS OF PAYMENT:**

THE BUTT JOINT WILL BE PAID FOR AT THE CONTRACT UNIT PRICE PER SQUARE YARD (SQUARE METER) FOR "HOT-MIX ASPHALT SURFACE REMOVAL - BUTT JOINT" OR FOR "PORTLAND CEMENT CONCRETE SURFACE REMOVAL - BUTT JOINT".

ALL DIMENSIONS ARE IN INCHES (MILLIMETERS) UNLESS OTHERWISE SHOWN.



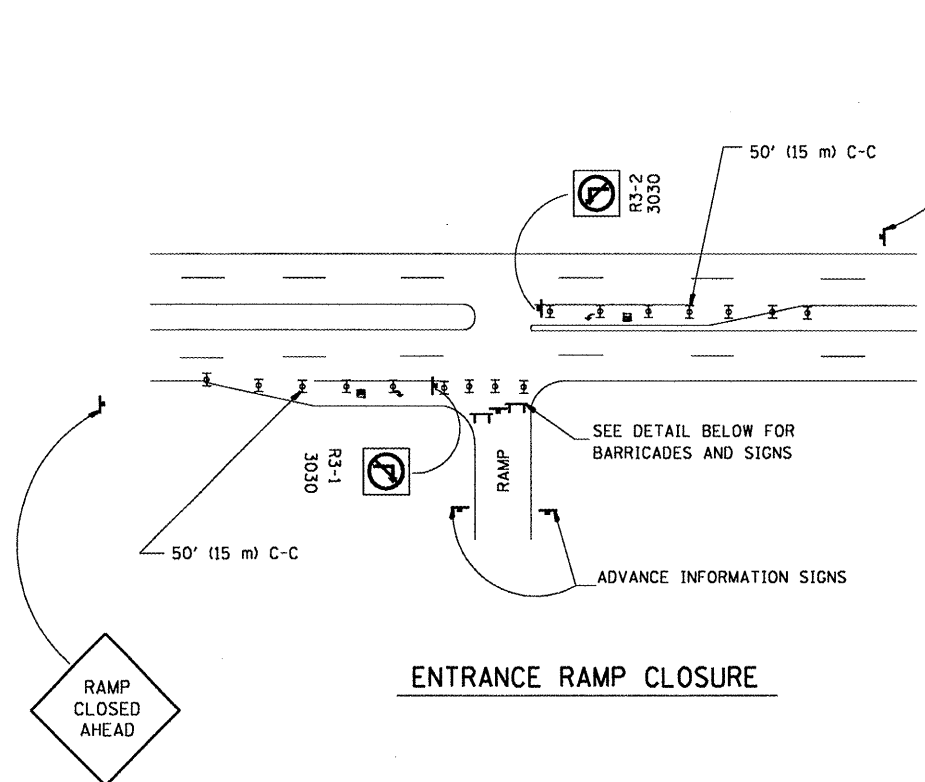
**TYPICAL BUTT JOINT AND HMA TAPER FOR MILLING AND RESURFACING**

FILE NAME =	USER NAME = wilgreendp	DESIGNED - M. DE YONG	REVISED - R. SHAH 10-25-94
c:\pwork\pwork\wilgreendp\d0125109\145Std.dgn		DRAWN -	REVISED - A. ABBAS 03-21-97
PLOT SCALE = 100.0000 "/td> <td>CHECKED -</td> <td>REVISED - M. GOMEZ 04-06-01</td> <td></td>	CHECKED -	REVISED - M. GOMEZ 04-06-01	
PLOT DATE = 3/14/2009	DATE - 06-13-90	REVISED - R. BORO 01-01-07	

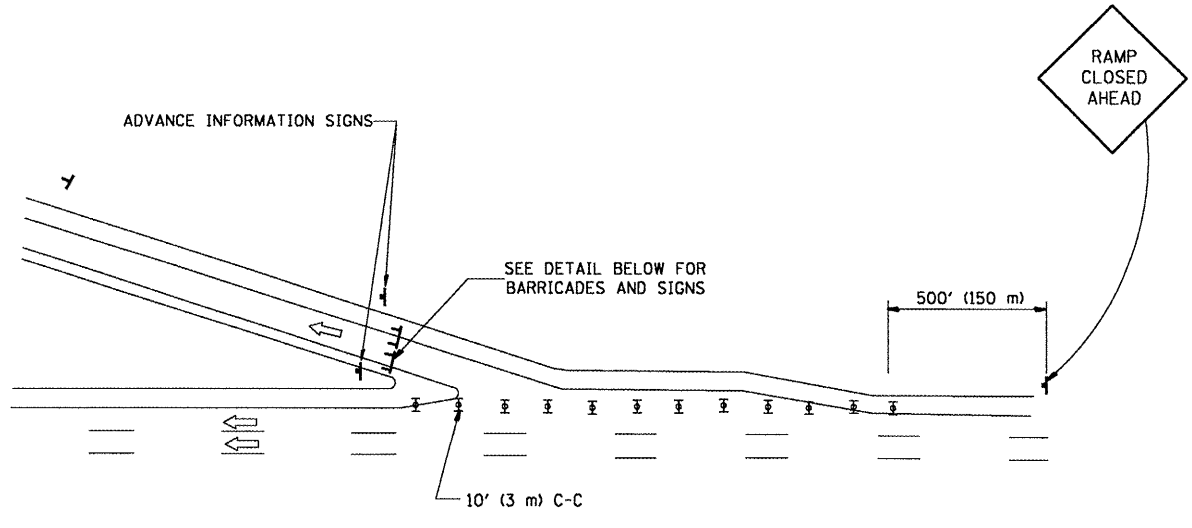
**STATE OF ILLINOIS  
DEPARTMENT OF TRANSPORTATION**

<b>BUTT JOINT AND HMA TAPER DETAILS</b>			
SCALE: NONE	SHEET NO. 1 OF 1 SHEETS	STA.	TO STA.

F.A. RTE. 290	SECTION 2009-030 PP	COUNTY Cook + Dup	TOTAL SHEETS 15	SHEET NO. 10
BD400-05 BD32		CONTRACT NO. 60629		
FED. ROAD DIST. NO. 1 ILLINOIS FED. AID PROJECT				

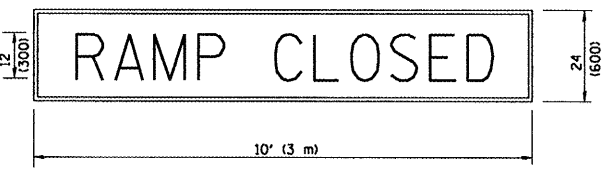


**ENTRANCE RAMP CLOSURE**



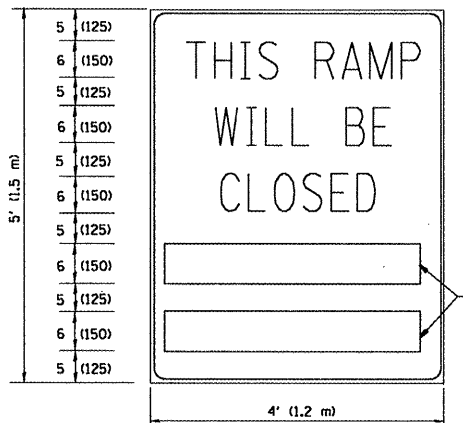
**EXIT RAMP CLOSURE**

**RAMP CLOSURE ADVANCE WARNING SIGN**



BLACK LEGEND ON ORANGE REFLECTORIZED BACKGROUND  
1 (25) BORDER  
THESE SIGNS ARE REQUIRED ON ALL THE EXIT GUIDE SIGNS FOR THE CLOSED EXIT RAMP.

**RAMP CLOSURE ADVANCE INFORMATION SIGN**



BLACK LEGEND ON WHITE REFLECTORIZED BACKGROUND  
1/2 (12) BORDER

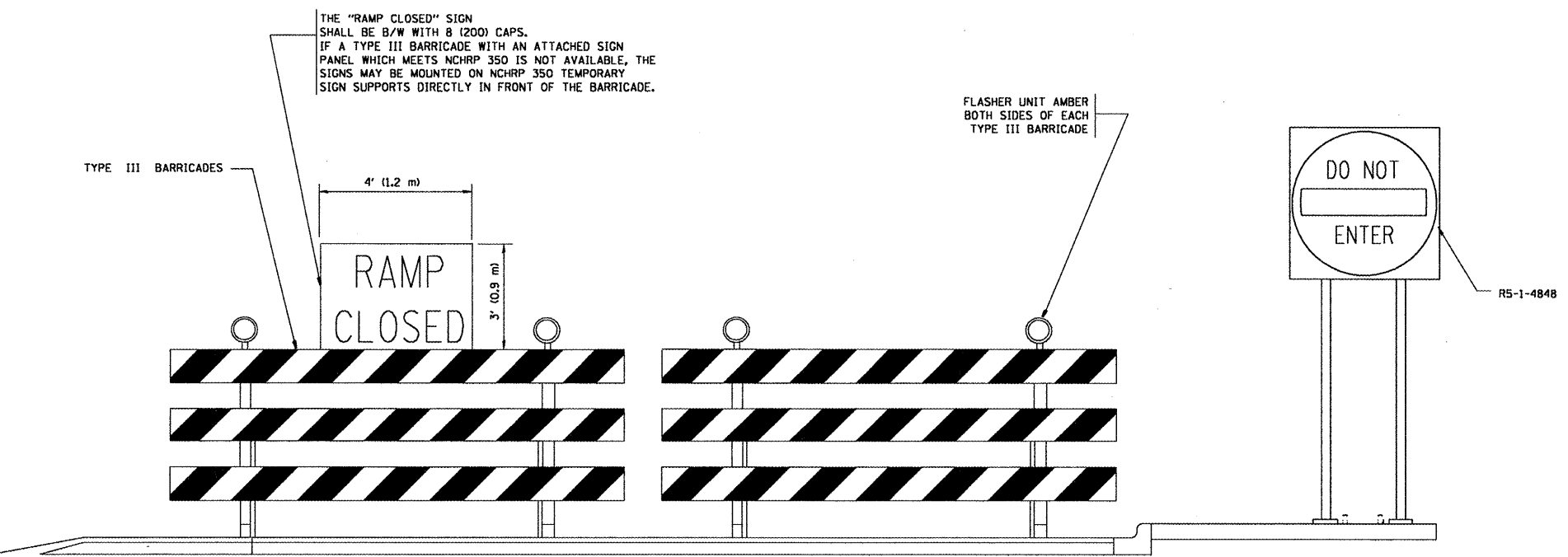
THESE BLANK AREAS SHALL BE FILLED WITH THE DATES AND THE TIME THAT THE RAMP WILL BE CLOSED.

THESE SIGNS ARE REQUIRED ON BOTH SIDES OF THE RAMP, MINIMUM OF 1 WEEK IN ADVANCE OF THE CLOSURE.

**GENERAL NOTES:**

1. CONES MAY BE SUBSTITUTED FOR DRUMS OR TYPE II BARRICADES DURING DAY OPERATIONS. CONES SHALL BE A MINIMUM OF 28 (700) HIGH.
2. STEADY BURN LIGHTS WILL NOT BE REQUIRED FOR DAY OPERATIONS.
3. A FLAGGER SHALL BE POSITIONED AT EACH CLOSED RAMP THAT IS OPEN TO CONSTRUCTION VEHICLES.
4. ALL ROUTE MARKERS AND TRAILBLAZER ASSEMBLIES WHICH DIRECT MOTORISTS TO A CLOSED ENTRANCE RAMP SHALL BE COVERED.
5. THE SIGNING AND BARRICADING WHICH IS REQUIRED BY THIS DETAIL SHALL BE INCLUDED IN THE COST OF TRAFFIC CONTROL AND PROTECTION (EXPRESSWAYS).
6. AUTHORIZATION FROM THE DISTRICT'S BUREAU OF TRAFFIC IS REQUIRED FOR ALL RAMP CLOSURES.
7. THE RAMP CLOSURE ADVANCE INFORMATION SIGNS SHALL BE ERECTED IF THE CLOSURE TIME EXCEEDS TWENTY-FOUR (24) HOURS. ADDITIONAL ADVANCE WARNING SIGNS ON EXIT GUIDE SIGNING WILL BE REQUIRED FOR EXIT RAMP CLOSURES THAT EXCEED TWENTY-FOUR (24) HOURS IN LENGTH.

ALL DIMENSIONS ARE IN INCHES (MILLIMETERS) UNLESS OTHERWISE SHOWN.



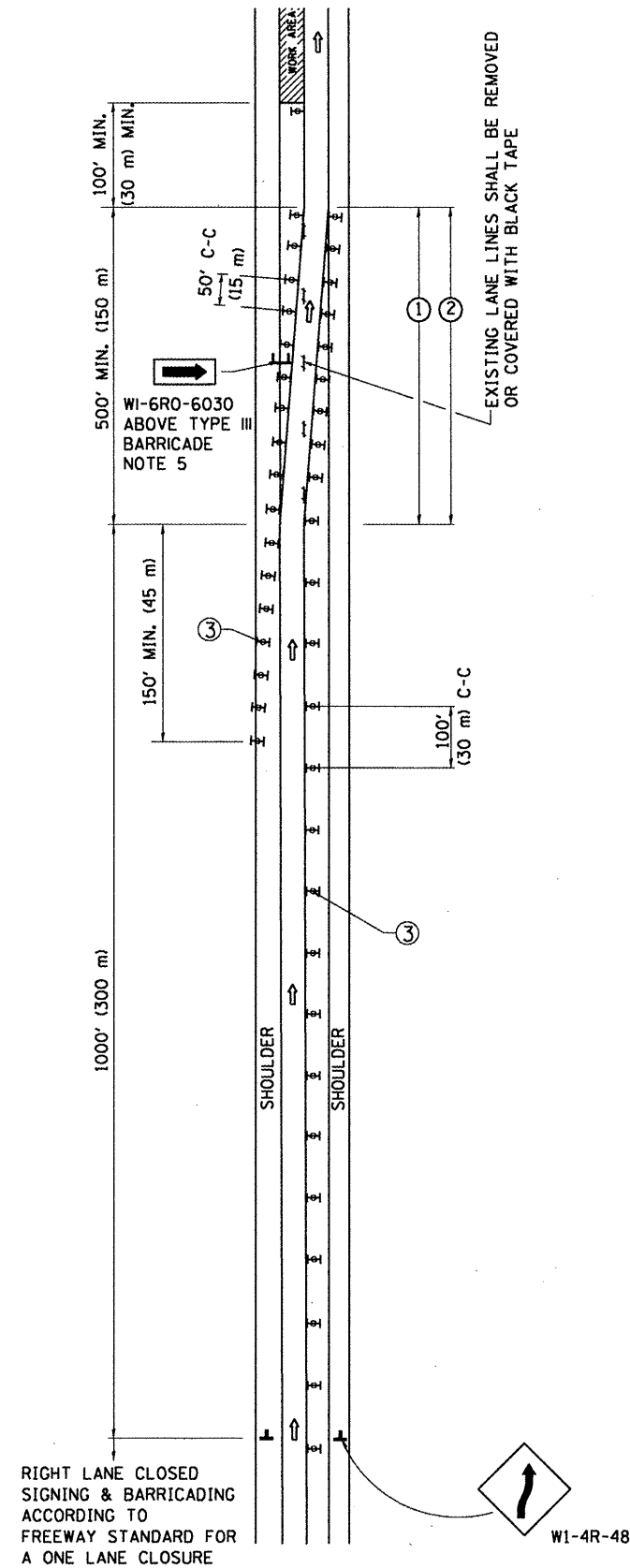
**DETAIL FOR REQUIRED BARRICADES & SIGNS**

**SYMBOLS**

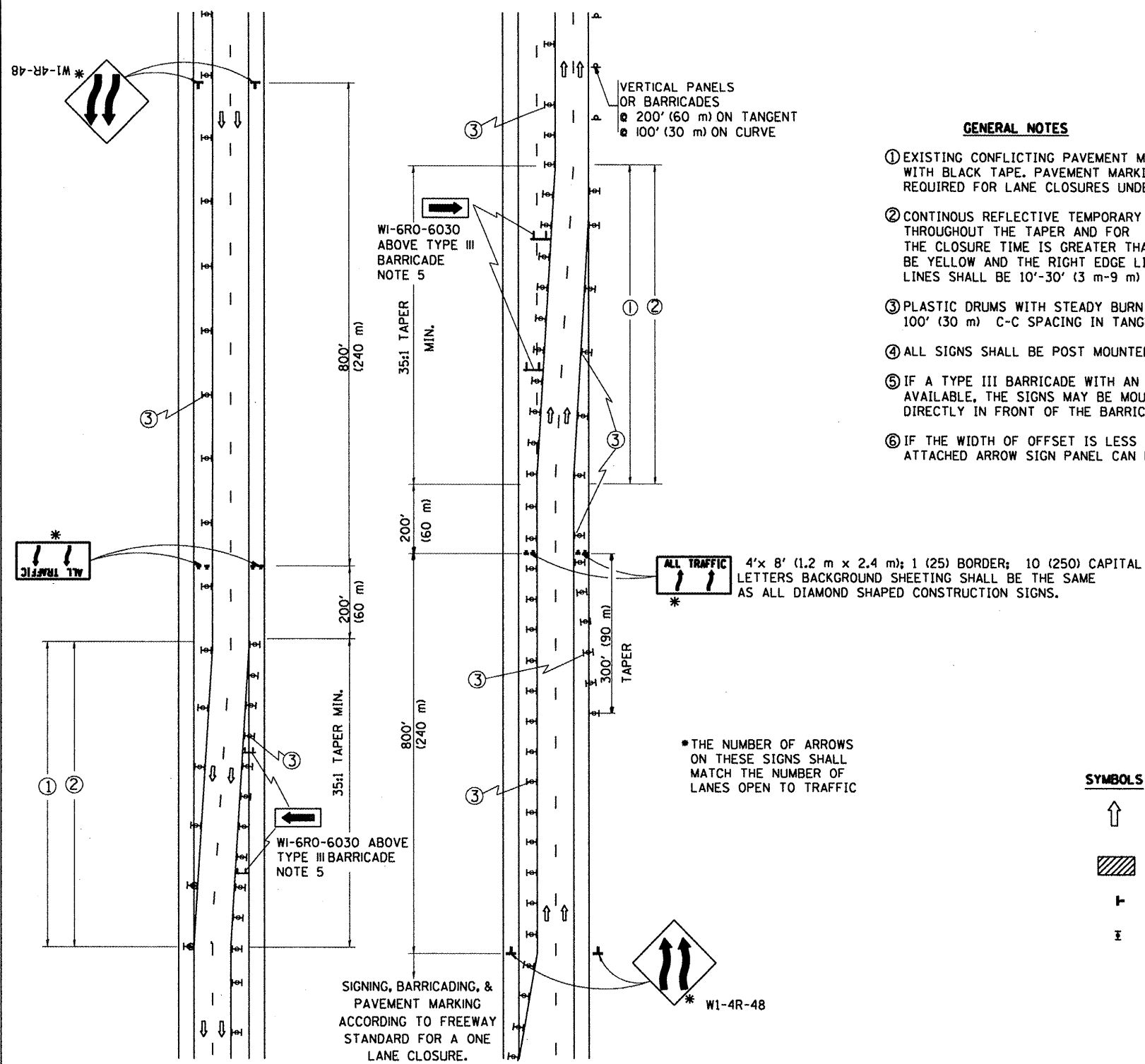
- ⊞ TYPE II BARRICADE, DRUM OR VERTICAL BARRICADE WITH STEADY BURN MONO-DIRECTIONAL LIGHT
- ⊞ TYPE III BARRICADE WITH FLASHING LIGHT

FILE NAME =	USER NAME = wilgreendp	DESIGNED - DWS	REVISED - DWS 12-94	<b>STATE OF ILLINOIS DEPARTMENT OF TRANSPORTATION</b>	<b>FREWAY ENTRANCE AND EXIST RAMP CLOSURE DETAILS</b>		F.A. RTE.	SECTION	COUNTY	TOTAL SHEETS	SHEET NO.		
c:\pwwork\pwwork\wilgreendp\d0125189\ds	tsstd.dgn	DRAWN -	REVISED - DWS/JAF 12-02		SCALE: NONE	SHEET NO. 1 OF 1 SHEETS	STA.	TO STA.	290	2009-030 PP	Cook + Dup	15	11
	PLOT SCALE = 100.00000 ' / IN.	CHECKED -	REVISED - JAF 02-06						TC-08				
	PLOT DATE = 3/14/2009	DATE - 02-83	REVISED - SPB 01-07						FED. ROAD DIST. NO. 1 [ILLINOIS] FED. AID PROJECT				CONTRACT NO. 60629

# SINGLE LANE WEAVE



# MULTI-LANE WEAVE



### GENERAL NOTES

- EXISTING CONFLICTING PAVEMENT MARKING LINES SHALL BE REMOVED OR COVERED WITH BLACK TAPE. PAVEMENT MARKING REMOVAL OR BLACK TAPE SHALL NOT BE REQUIRED FOR LANE CLOSURES UNDER 24 HOURS IN DURATION.
- CONTINUOUS REFLECTIVE TEMPORARY PAVEMENT MARKING TAPE SHALL BE PLACED THROUGHOUT THE TAPER AND FOR 300' (90 m) ALONG SIDE THE WORK AREA WHERE THE CLOSURE TIME IS GREATER THAN FOURTEEN DAYS. THE LEFT EDGE LINE SHALL BE YELLOW AND THE RIGHT EDGE LINE SHALL BE WHITE. FOR MULTI-LANE WEAVE LANE LINES SHALL BE 10'-30' (3 m-9 m) SKIP DASH, WHITE.
- PLASTIC DRUMS WITH STEADY BURN LIGHTS AT 50' (15 m) C-C SPACING IN TAPERS AND 100' (30 m) C-C SPACING IN TANGENTS.
- ALL SIGNS SHALL BE POST MOUNTED IF THE CLOSURE TIME EXCEEDS FOUR DAYS.
- IF A TYPE III BARRICADE WITH AN ATTACHED SIGN PANEL WHICH MEETS NCHRP 350 IS NOT AVAILABLE, THE SIGNS MAY BE MOUNTED ON NCHRP 350 TEMPORARY SIGN SUPPORTS DIRECTLY IN FRONT OF THE BARRICADE.
- IF THE WIDTH OF OFFSET IS LESS THAN 6' THEN THE TYPE III BARRICADE WITH ATTACHED ARROW SIGN PANEL CAN BE ELIMINATED IN THE TAPER AREAS.

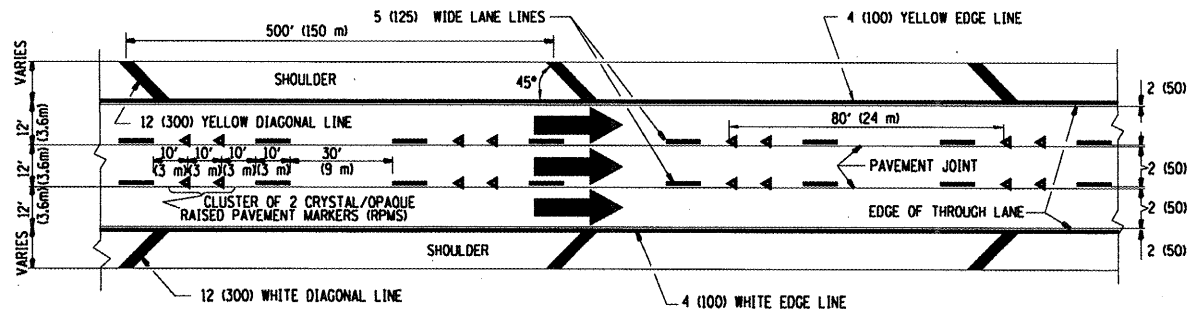
### SYMBOLS

- DIRECTION OF TRAFFIC
- WORK AREA
- SIGN ON PORTABLE OR PERMANENT SUPPORT
- TYPE II BARRICADE, DRUM OR VERTICAL BARRICADE WITH MONO-DIRECTIONAL STEADY BURNING LIGHT

ALL DIMENSIONS ARE IN INCHES (MILLIMETERS) UNLESS OTHERWISE SHOWN

FILE NAME =	USER NAME = smthkl	DESIGNED - DWS	REVISED - DWS 11-96	<b>STATE OF ILLINOIS DEPARTMENT OF TRANSPORTATION</b>	<b>TRAFFIC CONTROL DETAILS FOR FREEWAY SINGLE &amp; MULTI-LANE WEAVE</b>		F.A. RTE. =	SECTION	COUNTY	TOTAL SHEETS	SHEET NO.	
c:\pwwork\pwwork\1001\SMITHKL\0127557\Dist\td.dgn		DRAWN -	REVISED - JAF 01-03		SCALE: NONE	SHEET NO. 1 OF 1 SHEETS	STA.	290	2009-030 PP	Cook + AR	15	12
		CHECKED -	REVISED - JAF 02-06					TC-09		CONTRACT NO. 60629		
		DATE - 02-87	REVISED - SPB 01-07					FED. ROAD DIST. NO. 1 ILLINOIS FED. AID PROJECT				

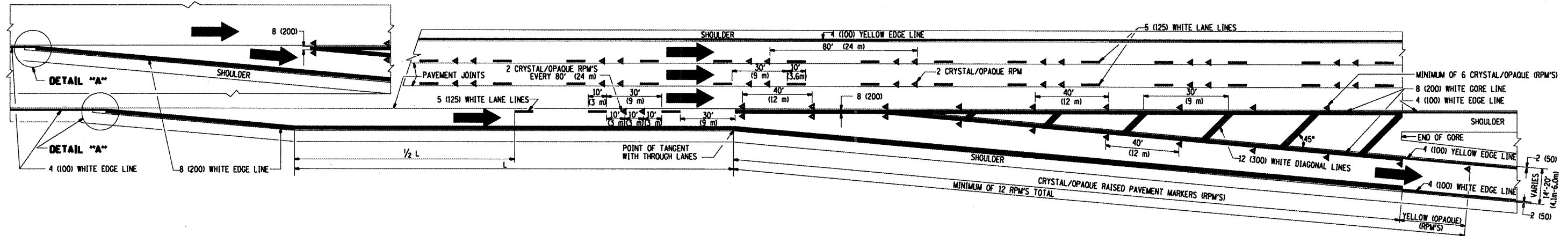
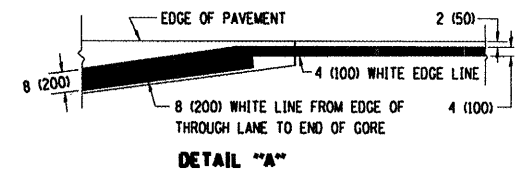
THE DIAGONAL LINES SHALL BE SPACED AT 40' (12 m) C-C ACROSS ALL STRUCTURES WHICH ARE 500' (150 m) OR LESS IN LENGTH  
THE DIAGONAL LINES ARE NOT REQUIRED ON SHOULDERS WHICH ARE 6' (1.8 m) OR LESS IN WIDTH



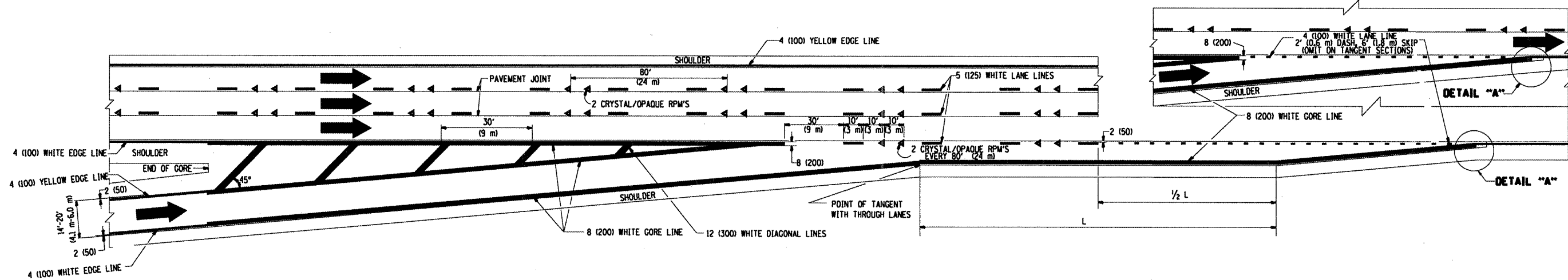
TYPICAL EDGE LINES & LANE LINES

NOTES:

1. THERMO PLASTIC PAVEMENT MARKING LINE SHALL BE USED FOR THE EDGE LINES, GORE LINES, AND DIAGONAL LINES ON BITUMINOUS PAVEMENT ONLY.
2. PREFORMED PLASTIC TYPE B PAVEMENT MARKING LINE SHALL BE USED FOR ALL LANE LINES ON BITUMINOUS PAVEMENT
3. POLYUREA PAVEMENT MARKING SHALL BE USED FOR ALL MARKINGS ON PCC

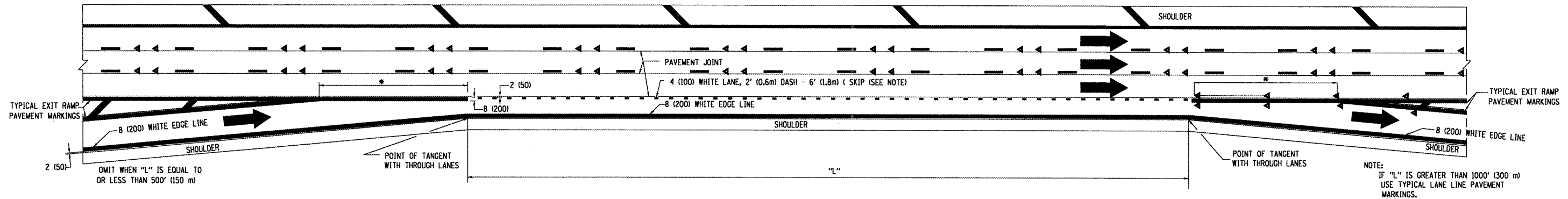


TYPICAL EXIT RAMP PAVEMENT MARKINGS

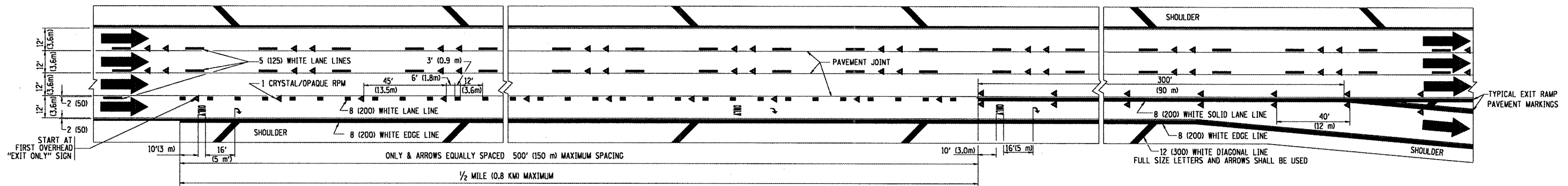


TYPICAL ENTRANCE RAMP PAVEMENT MARKINGS

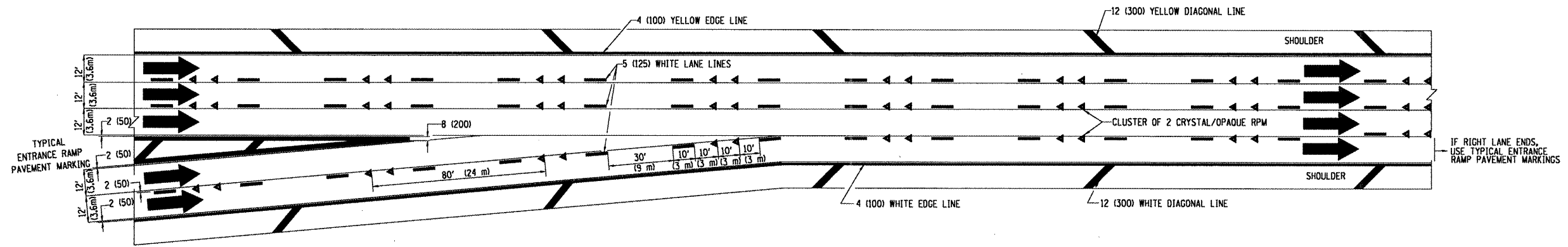
FILE NAME =	USER NAME = smthkl	DESIGNED - D.W.S.	REVISED - A.H. 03-96	<b>STATE OF ILLINOIS DEPARTMENT OF TRANSPORTATION</b>	<b>MULTI-LANE FREEWAY PAVEMENT MARKING DETAILS</b>		F.A. RTE. 290	SECTION 2009-030 PP	COUNTY COOK	TOTAL SHEETS 15	SHEET NO. 13	
CONTRACT NO. 60629	DATE 01-90	CHECKED -	REVISED - J.A.F. 02-06		SCALE: NONE	SHEET NO. 1 OF 2 SHEETS	STA. TO STA.	FED. ROAD DIST. NO. 1 ILLINOIS FED. AID PROJECT				
PLOT SCALE = 1/8" = 1' / IN.	DATE 01-90	REVISOR - S.P.B. 01-07	REVISOR -									
PLOT DATE = 3/27/2009												



**TYPICAL ENTRANCE/EXIT RAMP COMBINATION PAVEMENT MARKINGS**



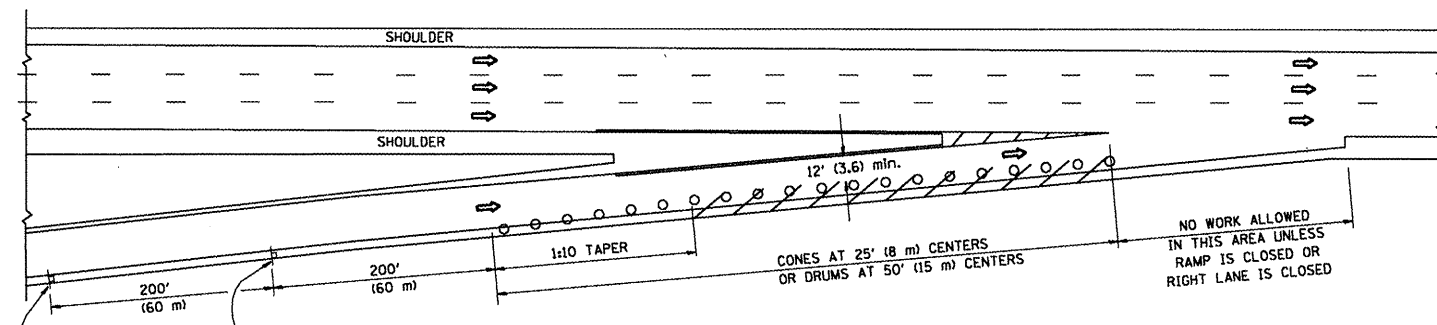
**TYPICAL EXIT ONLY LANE PAVEMENT MARKINGS**



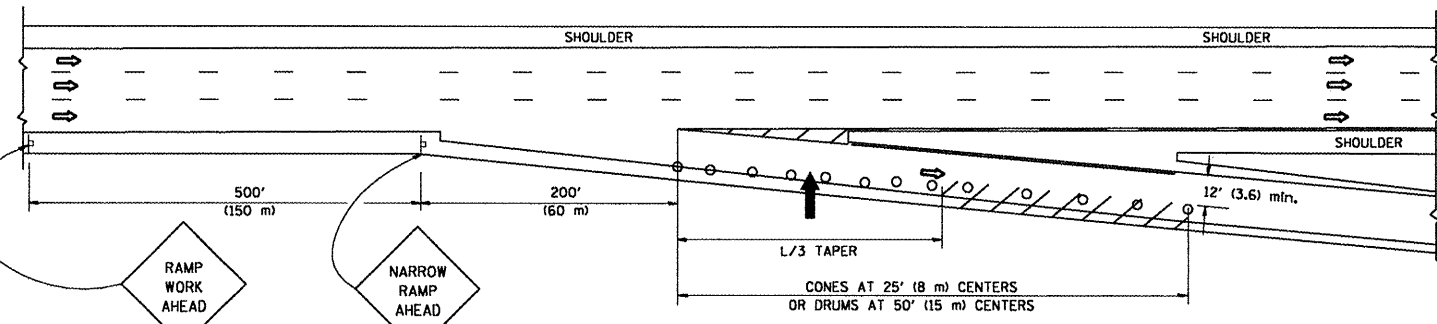
**TYPICAL TWO LANE ENTRANCE RAMP PAVEMENT MARKINGS**

FILE NAME =	USER NAME = wilgreenp	DESIGNED - D.W.S.	REVISED - A.H. 03-96	<b>STATE OF ILLINOIS DEPARTMENT OF TRANSPORTATION</b>	<b>MULTI-LANE FREEWAY PAVEMENT MARKING DETAILS</b>			F.A. RTE. 290	SECTION 2009-030 PP	COUNTY Cook + Dup.	TOTAL SHEETS 15	SHEET NO. 14
α\pwork\pwork\wilgreenp\d0125109\Std.dgn		DRAWN -	REVISED - D.W.S. 07-96		SCALE: NONE	SHEET NO. 2 OF 2 SHEETS	STA. TO STA.	FED. ROAD DIST. NO. 1 ILLINOIS FED. AID PROJECT				
PLOT SCALE = 1/8" = 1' / IN.		CHECKED -	REVISED - J.A.F. 02-06									
PLOT DATE = 3/14/2009		DATE - 01-90	REVISED - S.P.B. 01-07		CONTRACT NO. 60629							

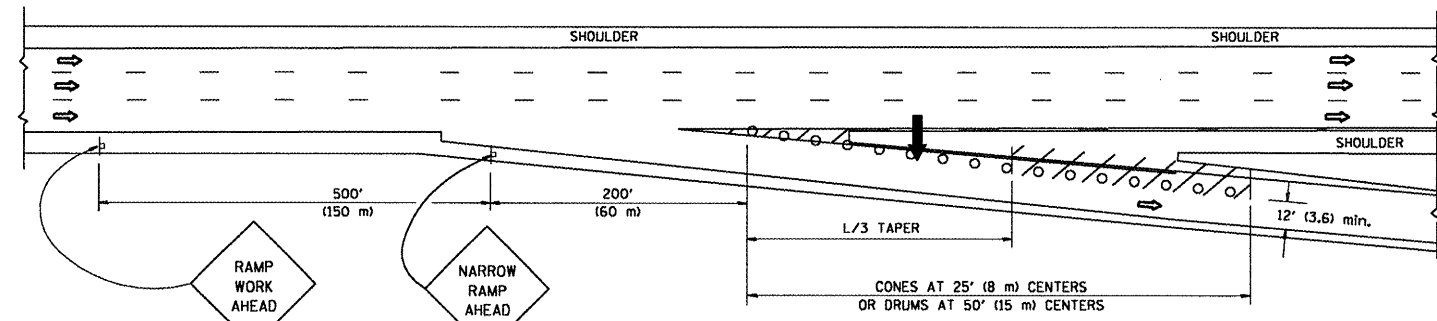
**PARTIAL RAMP CLOSURE DETAILS**



**TYPICAL ENTRANCE RAMP**



**TYPICAL EXIT RAMP**



**TYPICAL EXIT RAMP**

**SYMBOLS**

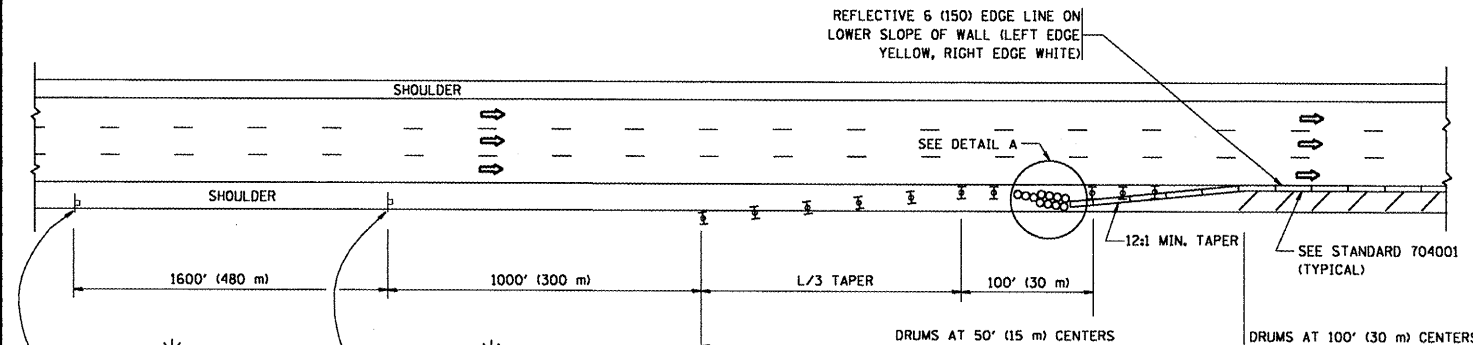
- ➔ ARROWBOARD
- ▨ WORK AREA
- ┌ SIGN ON PORTABLE OR PERMANENT SUPPORT
- FLAGGER WITH CONTROL SIGN
- ⊕ TYPE II BARRICADE, DRUM OR VERTICAL BARRICADE WITH STEADY BURN MONO-DIRECTIONAL LIGHT
- CONE, DRUM OR BARRICADE

**GENERAL NOTES**

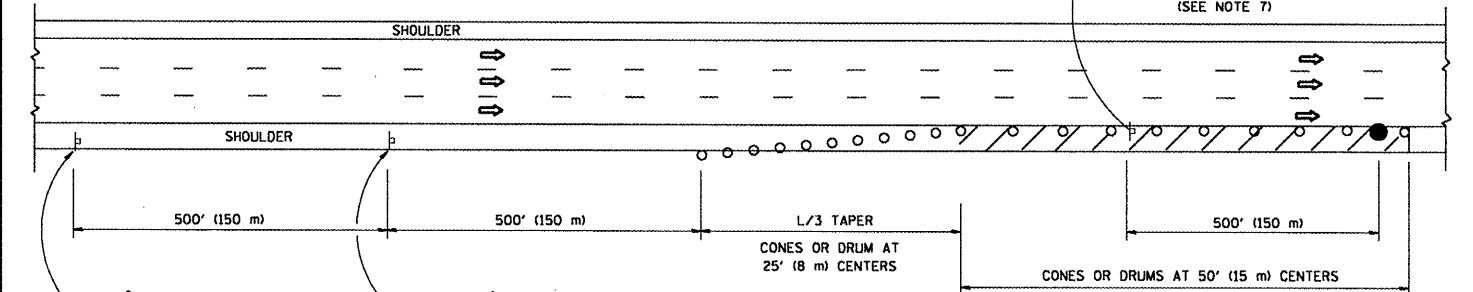
1. THE "L" DISTANCE EQUALS:
 

SPEED LIMIT	FORMULAS
45 mph (80 km/h) OR GREATER:	METRIC: $L=0.65(W)(S)$ ENGLISH: $L=(W)(S)$
	W = WIDTH OF OFFSET IN FEET (METERS)
	S = NORMAL POSTED SPEED MPH (KM/H)
2. PLASTIC DRUMS WITH HIGH PERFORMANCE REFLECTIVE SHEETING AND STEADY BURNING LIGHTS ARE REQUIRED FOR ALL NIGHTTIME CLOSURES.
3. ALL SIGNS SHALL BE POST MOUNTED IF THE CLOSURE TIME EXCEEDS FOUR DAYS.
4. FLASHING LIGHTS SHALL BE USED DURING THE HOURS OF DARKNESS AND SHALL BE INSTALLED ABOVE THE FIRST TWO SETS OF SIGNS.

**SHOULDER CLOSURE DETAILS**



**PERMANENT SHOULDER CLOSURE**



**DAYTIME SHOULDER CLOSURE**

THIS DETAIL IS USED WHERE:  
 1. VEHICLES, EQUIPMENT, WORKERS OR THEIR ACTIVITIES ENCR OACH IN AN AREA CLOSER THAN 15' (4.5 m) TO THE EDGE OF PAVEMENT FOR A PERIOD IN EXCESS OF 15 MINUTES.

ARRAY DESIGN PER MANUFACTURER TO BE NCHRP 350 COMPLIANT FOR POSTED SPEED.

**DETAIL "A"**  
 IMPACT ATTENUATOR, TEMPORARY  
 (SEE NOTE 5)

ALL DIMENSIONS ARE IN INCHES (MILLIMETERS) UNLESS OTHERWISE SHOWN.

FILE NAME =	USER NAME = wlgreendp	DESIGNED -	REVISED - J.A.F. 12-02
c:\pwwork\pwwork\wlgreendp\d0125109\Std.dgn		DRAWN - D.W.S.	REVISED - 04-03
		CHECKED -	REVISED - J.A.F. 12-06
		DATE - 11-96	REVISED - S.P.B. 01-07

**STATE OF ILLINOIS**  
**DEPARTMENT OF TRANSPORTATION**

<b>TRAFFIC CONTROL DETAILS FOR FREEWAY</b>			
<b>SHOULDER CLOSURES AND PARTIAL RAMP CLOSURES</b>			
SCALE: NONE	SHEET NO. 1 OF 1 SHEETS	STA.	TO STA.

F.A. RTE.	SECTION	COUNTY	TOTAL SHEETS	SHEET NO.
290	2009-030 PP	COOK + DVA	15	15
TC-17			CONTRACT NO. 60629	
FED. ROAD DIST. NO. 1   ILLINOIS   FED. AID PROJECT				