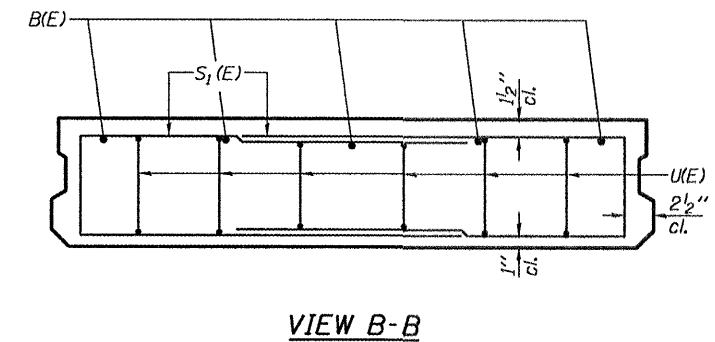
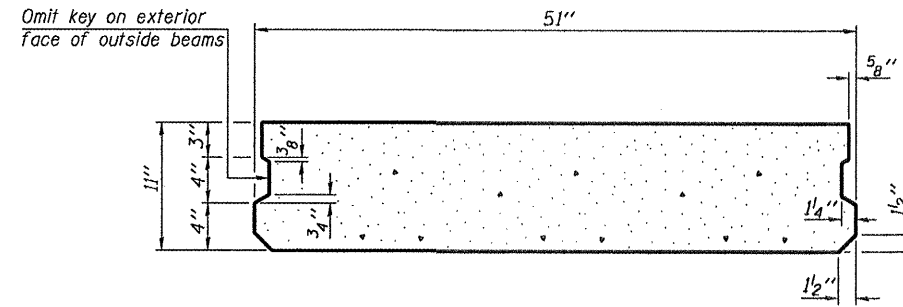
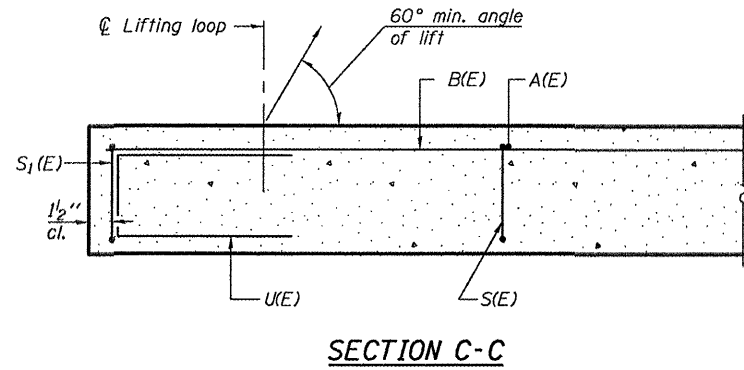
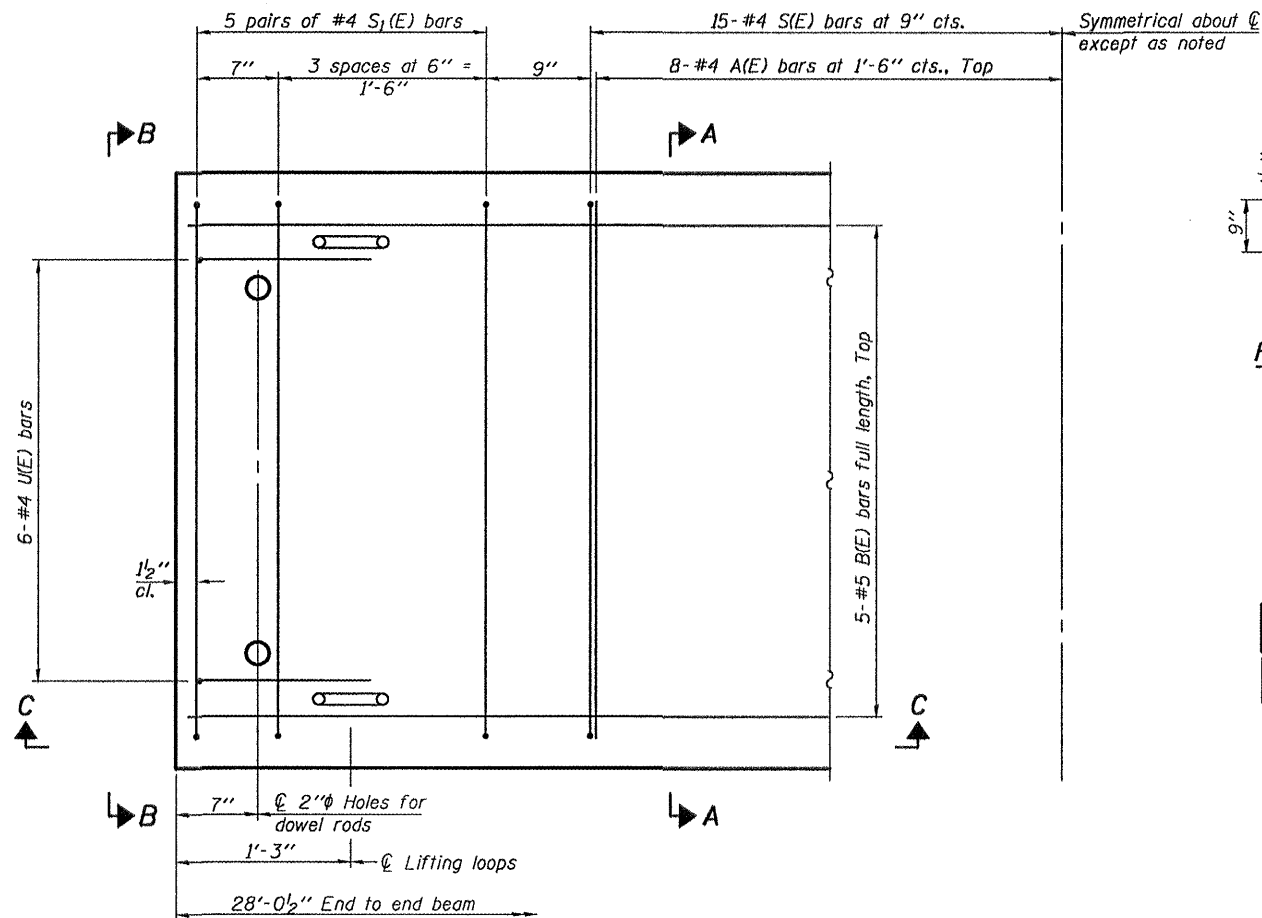


STATE OF ILLINOIS  
DEPARTMENT OF TRANSPORTATION



SECTION A-A  
(Showing dimensions)

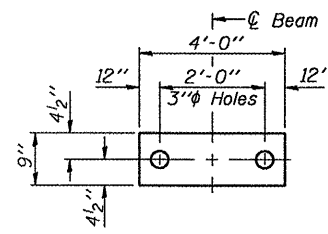
VIEW B-B



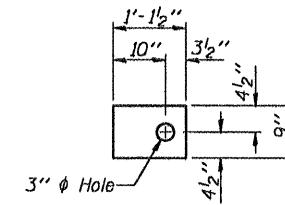
PLAN VIEW

See sheet 3 of 3 for details and dimensions not shown.

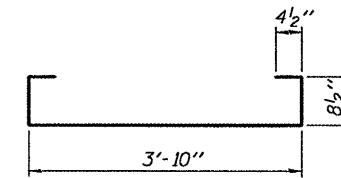
Symmetrical about  $\bar{C}$  except as noted



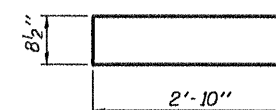
FABRIC BEARING PAD



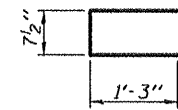
FABRIC ADJUSTING SHIM



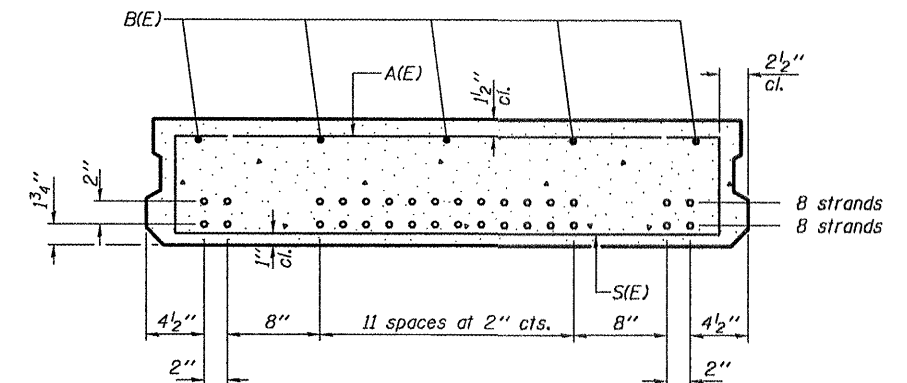
BAR S(E)



BAR S1(E)



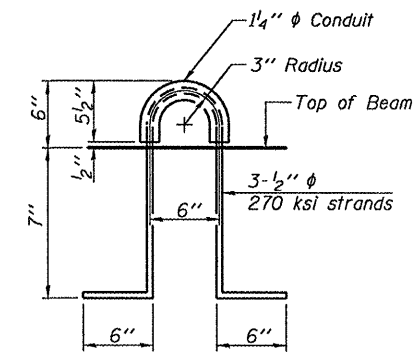
BAR U(E)



SECTION A-A

(Showing reinforcement and permissible strand locations)

Note: Place the number of strands specified in each row symmetrically about the centerline of beam in the permissible strand locations shown.



LIFTING LOOP DETAIL

BAR LIST  
ONE BEAM ONLY  
(For information only)

Bar	No.	Size	Length	Shape
A(E)	16	#4	3'-10"	—
B(E)	5	#5	27'-9"	—
S(E)	30	#4	6'-0"	⌊
S1(E)	20	#4	6'-5"	⌊
U(E)	12	#4	3'-2"	⌊

BILL OF MATERIAL

Precast Prestressed Conc. Deck Bms. (11" depth)	Sq. Ft.	119.2
---	---------	-------

BEAM DETAILS  
IL ROUTE 171 OVER  
LONG RUN CREEK  
SN 099-0080

NOTES

Prestressing steel shall be uncoated high strength, low relaxation 7-wire strand, Grade 270. The nominal diameter shall be 1/2" and the nominal cross-sectional area shall be 0.153 sq. in. Reinforcement bars shall conform to ASTM A 706, Grade 60. (See Special Provisions). Two 1/2" fabric adjusting shims of the dimensions shown shall be provided for each bearing pad location. A minimum 2 1/2" lifting pin shall be used to engage the lifting loops during handling. Corrosion Inhibitor, per Article 1020.05(b)(12) and 1021.06 of the Standard Specifications, shall be used in the concrete for precast prestressed concrete deck beams. Compressive strength of prestressed concrete, f'c, shall be 6000 psi. Compressive strength of prestressed concrete at release, f'ci, shall be 5000 psi.

DESIGNED	AJB
CHECKED	VHV
DRAWN	Kyle M. Steffen
CHECKED	AJB VHV

MAY 1, 2009  
EXAMINED *Carl Kroyer*  
ENGINEER OF STRUCTURAL SERVICES  
PASSED *Ralph E. Anderson*  
ENGINEER OF BRIDGES AND STRUCTURES

SHEET NO. 2 3 SHEETS	F.A.P. RTE. 577	SECTION -	COUNTY WILL	TOTAL SHEETS 13	SHEET NO. 6
	CONTRACT NO. 60G38				
FED. ROAD DIST. NO. ILLINOIS FED. AID PROJECT					