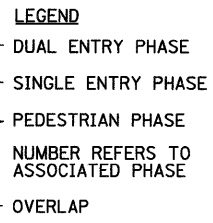
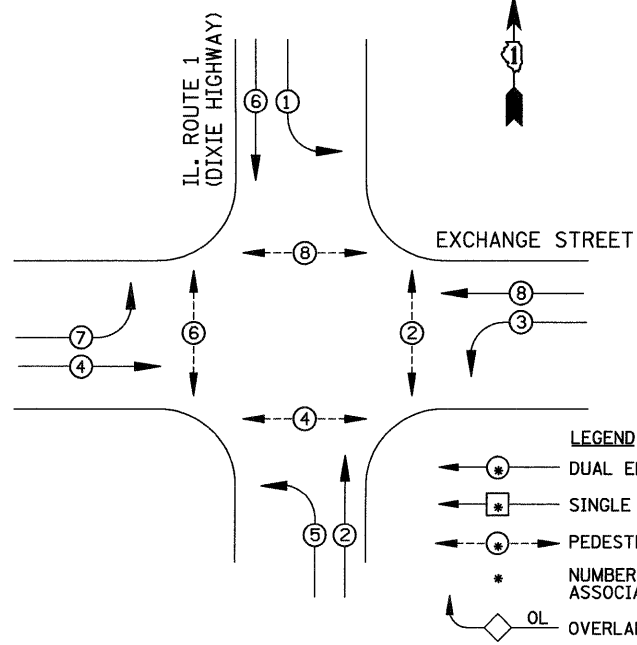
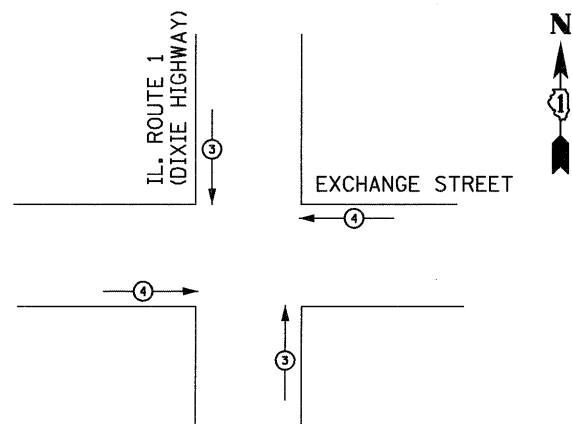


**CONTROLLER SEQUENCE**



**PHASE DESIGNATION DIAGRAM**

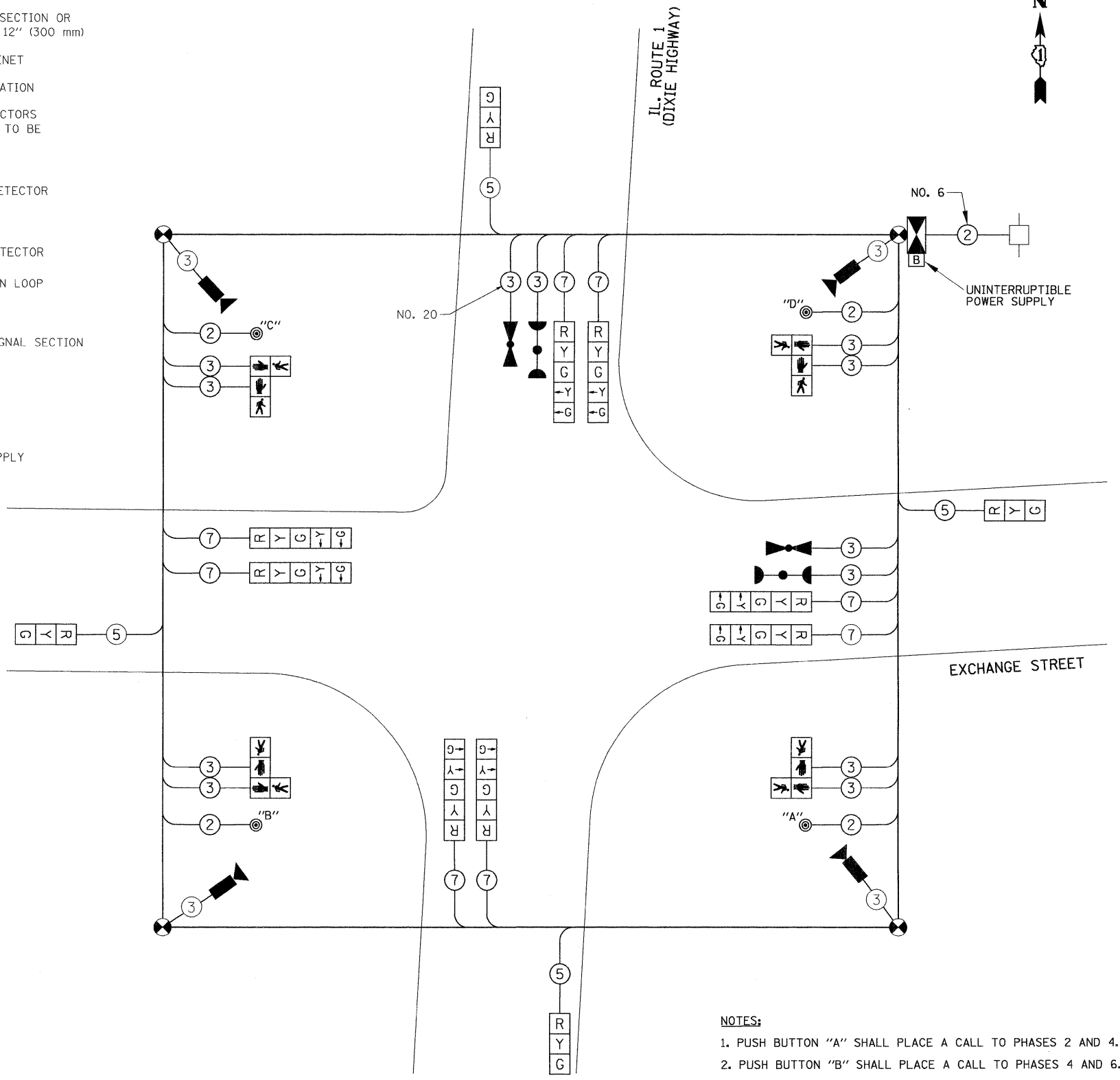
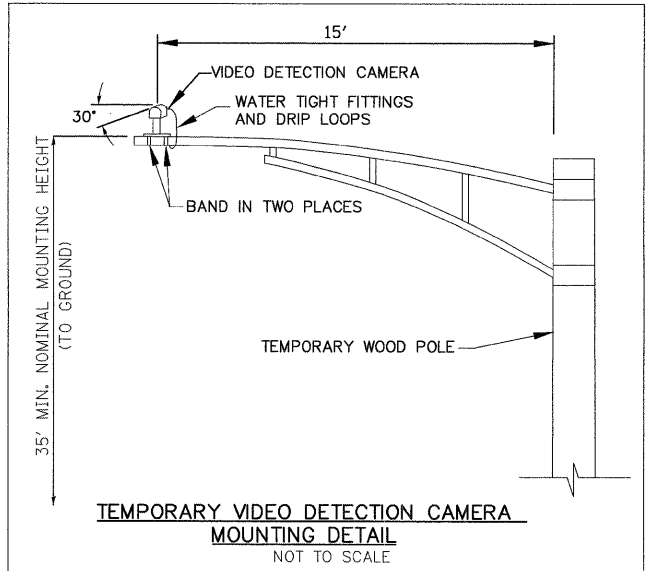
**EMERGENCY VEHICLE PREEMPTION SEQUENCE**



EMERGENCY VEHICLE PREEMPTOR	3	4
MOVEMENT	↑ ↓	← →

**TEMPORARY CABLE DIAGRAM LEGEND**

- [R] TEMPORARY TRAFFIC SIGNAL SECTION OR PEDESTRIAN SIGNAL SECTION 12" (300 mm)
- [X] TEMPORARY CONTROLLER CABINET
- [ ] TEMPORARY SERVICE INSTALLATION
- (5) INDICATES NUMBER OF CONDUCTORS IN CABLE. ALL CONDUCTORS TO BE NUMBER 14 AWG WIRE UNLESS OTHERWISE NOTED.
- ▶ EMERGENCY VEHICLE LIGHT DETECTOR
- CONFIRMATION BEACON
- ⊙ PEDESTRIAN PUSH-BUTTON DETECTOR
- [ ] VEHICLE DETECTOR, INDUCTION LOOP
- [ ] 12" (300mm) PEDESTRIAN SIGNAL SECTION
- ▶ VIDEO VEHICLE SENSOR
- ⊙ TEMPORARY WOOD POLE
- [B] UNINTERRUPTIBLE POWER SUPPLY



**TEMPORARY CABLE PLAN**

- NOTES:**
1. PUSH BUTTON "A" SHALL PLACE A CALL TO PHASES 2 AND 4.
  2. PUSH BUTTON "B" SHALL PLACE A CALL TO PHASES 4 AND 6.
  3. PUSH BUTTON "C" SHALL PLACE A CALL TO PHASES 6 AND 8.
  4. PUSH BUTTON "D" SHALL PLACE A CALL TO PHASES 2 AND 8.

TYPE	NO. LAMPS	WATTAGE INCAND.	WATTAGE LED	%OPERATION	TOTAL WATTAGE
SIGNAL (RED)	12	135	17	0.50	102
(YELLOW)	12	135	25	0.25	75
(GREEN)	12	135	15	0.25	45
ARROW	12	135	12	0.10	14.4
PED. SIGNAL	8	90	25	1.00	200
CONTROLLER	1	100	100	1.00	100
ILLUM. SIGN		84		0.05	
FLASHER				0.50	
TOTAL =					536.4

FOUNDATION (DEPTH)	FT. (m)	CABLE SLACK	FT. (m)	VERTICAL	FT. (m)
TYPE A - POST	4 (1.2)	HANDHOLE	6.5 (2.0)	ALL FOUNDATIONS	3.0 (1.0)
D - CONTROLLER	4 (1.2)	DOUBLE HANDHOLE	13 (4.0)	MAST ARM (L) POLE	20.0 (6.0)
E - M. ARM POLE		SIGNAL POST	0 (0.0)	BRACKET MOUNTED	13 (4.0)
24" (600mm)	10 (3.0)	CONTROLLER CAB.	0 (0.0)	PEDESTRIAN PUSH-BUTTON	6 (2.0)
30" (750mm)	15 (4.6)	FIBER OPTIC	13 (4.0)	ELECTRIC SERVICE	13.5 (4.1)
		ELECTRIC SERVICE	1 (0.5)	SERVICE TO GROUND	13.5 (4.1)
		GROUND CABLE	1 (0.5)	POST MOUNTED	13 (4.0)

ENERGY COSTS TO:  
 VILLAGE OF CRETE  
 524 W. EXCHANGE STREET  
 CRETE, IL 60417

ENERGY SUPPLY CONTACT:  
 PHONE: \_\_\_\_\_  
 COMPANY: COMED

FILE NAME = \MICROST\352072\ IL1 @ EXG TEMP CAB.DGN  
 USER NAME = RDS  
 PLOT SCALE = 1"=20'  
 PLOT DATE = 03-18-09

DESIGNED - KK  
 DRAWN - RDS  
 CHECKED - BPT  
 DATE - 03-18-09

REVISED -  
 REVISED -  
 REVISED -  
 REVISED -

**STATE OF ILLINOIS  
 DEPARTMENT OF TRANSPORTATION**

**TEMPORARY CABLE PLAN  
 AND PHASE DESIGNATION DIAGRAM  
 IL ROUTE 1 (DIXIE HIGHWAY) AT EXCHANGE STREET**

SCALE: N.T.S. SHEET NO. OF SHEETS STA. TO STA.

PREPARED BY:  
**CEMCON, Ltd.**  
 Consulting Engineers, Land Surveyors & Planners  
 2280 White Oak Circle, Suite 100  
 Aurora, Illinois 60504-9675  
 Ph: 630.862.2100 Fax: 630.862.2199  
 E-Mail: cadd@cemcon.com Website: www.cemcon.com

F.A.P. RTE.	SECTION	COUNTY	TOTAL SHEETS	SHEET NO.
	2009-037 TS	WILL	21	18
CONTRACT NO. 60G42				
FED. ROAD DIST. NO. [ILLINOIS] FED. AID PROJECT				