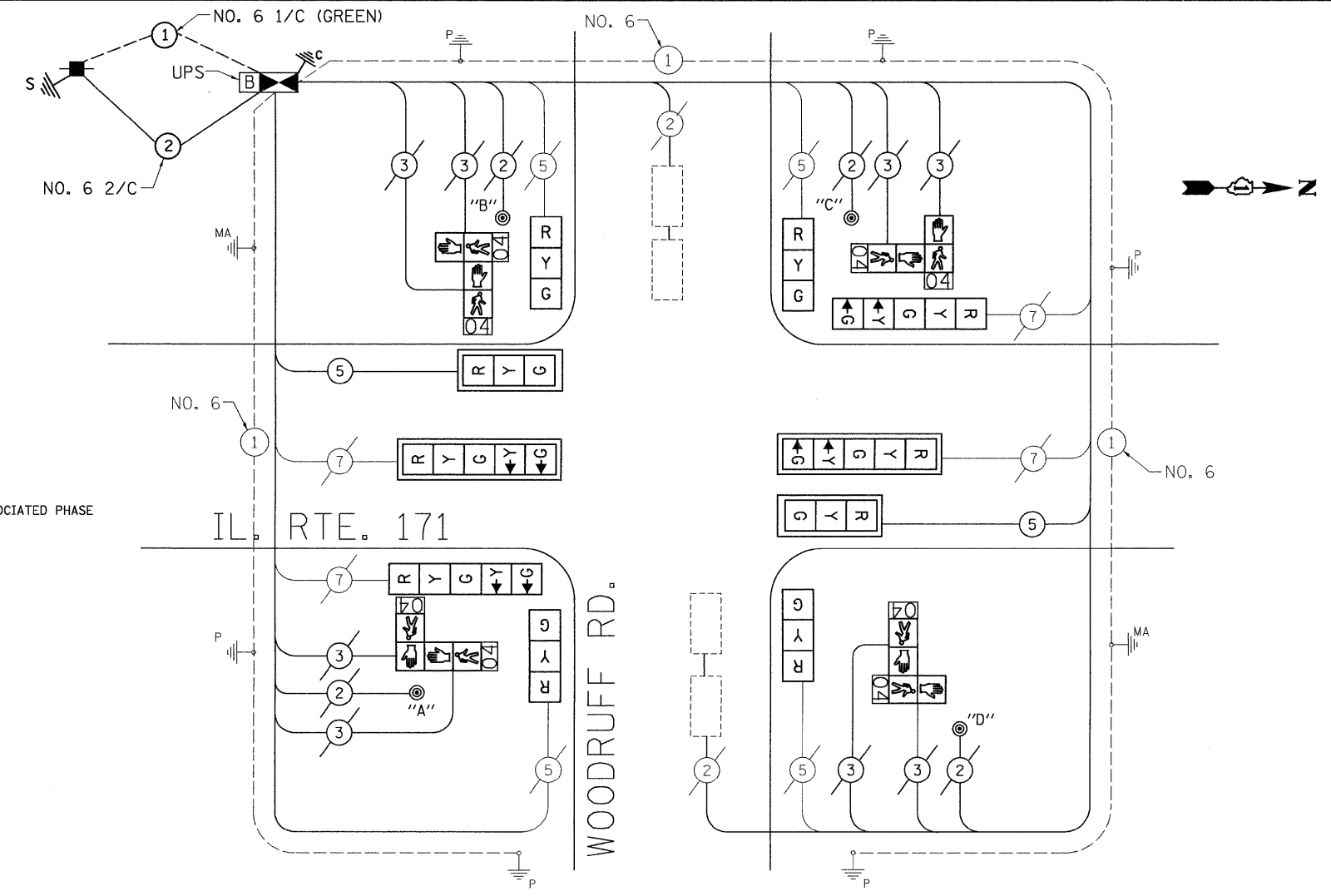


PHASE DESIGNATION DIAGRAM



CABLE PLAN LEGEND

	PROPOSED	EXISTING
CONTROLLER CABINET		
RAILROAD CONTROL CABINET		
SERVICE INSTALLATION, (P) POLE OR (G) GROUND MOUNT		
TELEPHONE CONNECTION		
GROUND ROD AT (C) CONTROLLER, (H) HANDHOLE, (P) POST, (M) MAST ARM, OR (S) SERVICE		
FIBER OPTIC CABLE IN CONDUIT, NUMBER OF FIBERS AS NOTED		
ELECTRIC CABLE IN CONDUIT, NO. 14, UNLESS OTHERWISE NOTED. NUMBER OF CONDUCTORS AS NOTED		
GROUND CABLE IN CONDUIT NO. 6 COPPER (GREEN)		
SIGNAL FACE WITH BACKPLATE. "P" INDICATES PROGRAMMED HEAD		
12" (300mm) RED WITH 8" (200mm) YELLOW AND GREEN TRAFFIC SIGNAL FACE		
12" (300mm) TRAFFIC SIGNAL SECTION		
12" (300mm) PEDESTRIAN SIGNAL SECTION WITH COUNTDOWN TIMER		
ILLUMINATED SIGN "NO LEFT TURN"		
ILLUMINATED SIGN "NO RIGHT TURN"		
PUSHBUTTON DETECTOR		
DETECTOR LOOP		
PREFORMED DETECTOR LOOP		
MICROWAVE VEHICLE SENSOR		
VIDEO DETECTOR		
CLOSED CIRCUIT TV		
EMERGENCY VEHICLE SYSTEM DETECTOR		
CONFIRMATION BEACON		
UNINTERRUPTABLE POWER SUPPLY		

SCHEDULE OF QUANTITIES

ITEM	UNIT	QUANTITY
THERMOPLASTIC PAVEMENT MARKING LINE 6"	FOOT	310
THERMOPLASTIC PAVEMENT MARKING LINE 24"	FOOT	80
MAINTENANCE OF EXISTING TRAFFIC SIGNAL INSTALLATION	EACH	1
FULL-ACTUATED CONTROLLER AND TYPE IV CABINET	EACH	1
ELECTRIC CABLE IN CONDUIT, SIGNAL NO. 14 5C	FOOT	279
ELECTRIC CABLE IN CONDUIT, GROUNDING, NO. 6 1C	FOOT	510
ELECTRIC CABLE IN CONDUIT, SERVICE, NO. 6 2C	FOOT	126
SIGNAL HEAD, L.E.D. 1-FACE, 3 SECTION, MAST ARM MNTD.	EACH	2
SIGNAL HEAD, L.E.D. 1-FACE, 3 SECTION, BRACKET MNTD.	EACH	4
SIGNAL HEAD, L.E.D. 1-FACE, 5 SECTION, MAST ARM. MNTD.	EACH	2
SIGNAL HEAD, L.E.D. 1-FACE, 5 SECTION, BRKT. MNTD.	EACH	2
TRAFFIC SIGNAL POST, GALVANIZED STEEL 14FT.	EACH	4
TRAFFIC SIGNAL POST, GALVANIZED STEEL 16FT.	EACH	2
TRAFFIC SIGNAL BACKPLATE, LOUVERED, ALUMINUM	EACH	4
REMOVE EXISTING TRAFFIC SIGNAL EQUIPMENT	EACH	1
UNINTERRUPTIBLE POWER SUPPLY	EACH	1
SERVICE INSTALLATION, POLE MOUNTED	EACH	1
PEDESTRIAN PUSH-BUTTON	EACH	4
PEDESTRIAN SIGNAL HEAD, L.E.D., 2-FACE, BRKT. MNTD. WITH COUNTDOWN TIMER	EACH	4
THERMOPLASTIC PAVEMENT MARKING REMOVAL	FOOT	90
REMOVE AND REINSTALL ELECTRIC CABLE FROM CONDUIT	FOOT	140

PUSH BUTTON NOTES:
 PUSH BUTTON "A" SHALL PLACE A CALL IN PHASES 2 AND 4
 PUSH BUTTON "B" SHALL PLACE A CALL IN PHASES 4 AND 6
 PUSH BUTTON "C" SHALL PLACE A CALL IN PHASES 6 AND 8
 PUSH BUTTON "D" SHALL PLACE A CALL IN PHASES 2 AND 8

I.D.O.T TRAFFIC SIGNAL INSTALLATION ELECTRICAL SERVICE REQUIREMENTS					TOTAL WATTAGE
TYPE	NO. LAMPS	WATTAGE (INCAND.)	LED	%OPERATION	
SIGNAL (RED)	10	135	17	0.50	85.00
(YELLOW)	10	135	25	0.25	62.50
(GREEN)	10	135	15	0.25	37.50
ARROW	8	135	12	0.10	9.60
PED. SIGNAL	8	90	25	1.00	200.00
CONTROLLER	1	100	100	1.00	100.00
ILLUM. SIGN		84		0.05	
FLASHER				0.50	
ENERGY COSTS TO:					TOTAL = 364.60
ENERGY SUPPLY CONTACT:					
PHONE: 708-410-5069					
COMPANY: COM. EDISON					

FOUNDATION (DEPTH)	FT. (m)	CABLE SLACK	FT. (m)	VERTICAL	FT. (m)
TYPE A - POST	4 (1.2)	HANDHOLE	6.5 (2.0)	ALL FOUNDATIONS	3.5 (1.0)
D - CONTROLLER	4 (1.2)	DOUBLE HANDHOLE	13 (4.0)	MAST ARM (L) POLE	20'-H-2' = (6m+L-0.6m) =
E - M. ARM POLE		SIGNAL POST	2 (1.0)	BRACKET MOUNTED	13 (4.0)
		CONTROLLER CAB.	1 (0.5)	PED. PUSHBUTTON	4 (1.2)
		24" (600mm)	10 (3.0)	ELECTRIC SERVICE	13.5 (4.1)
		30" (750mm)	15 (4.6)	GROUND CABLE	13.5 (4.1)
		36" (900mm)	15 (4.6)	POST MOUNTED	6 (1.8)

FILE NAME =	USER NAME =	DESIGNED -	REVISED -
\\MICROST\352072\1L171@WOODRUFF CAB.DGN		DRAWN -	REVISED -
		CHECKED -	REVISED -
		DATE -	REVISED -

PLOT SCALE = 1"=20'	
PLOT DATE = 03-18-09	

STATE OF ILLINOIS DEPARTMENT OF TRANSPORTATION

CABLE PLAN, SCHEDULE OF QUANTITIES AND PHASE DESIGNATION DIAGRAM
 IL. RTE. 171 AT WOODRUFF RD.
 SCALE: NO SCALE SHEET NO. OF SHEETS STA. TO STA.

F.A. RTE.	SECTION	COUNTY	TOTAL SHEETS	SHEET NO.
	2009-039 TS	WILL	20	10
CONTRACT NO. 60G44				
FED. ROAD DIST. NO. ILLINOIS FED. AID PROJECT				