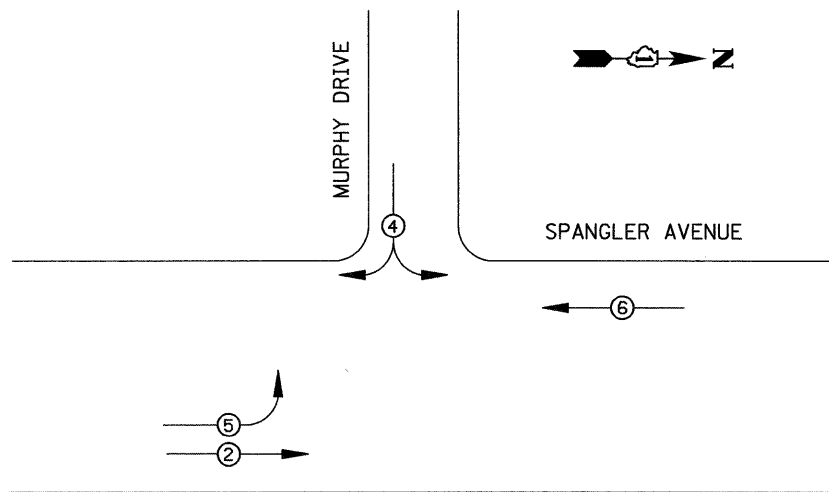
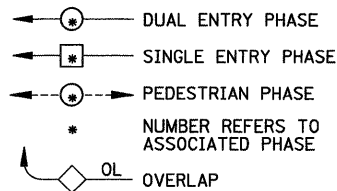


CONTROLLER SEQUENCE



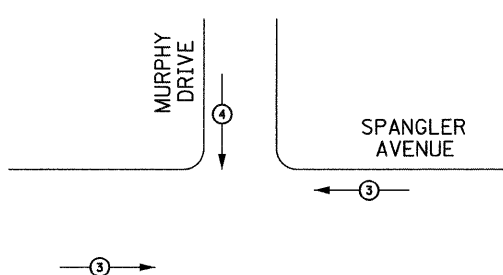
IL. ROUTE 53
(INDEPENDENCE BLVD.)

LEGEND



PHASE DESIGNATION DIAGRAM

EMERGENCY VEHICLE PREEMPTION SEQUENCE



IL. ROUTE 53
(INDEPENDENCE BLVD.)

PROPOSED EMERGENCY VEHICLE PREEMPTOR

EMERGENCY VEHICLE PREEMPTOR	3	4
MOVEMENT	← →	↓

CABLE PLAN LEGEND

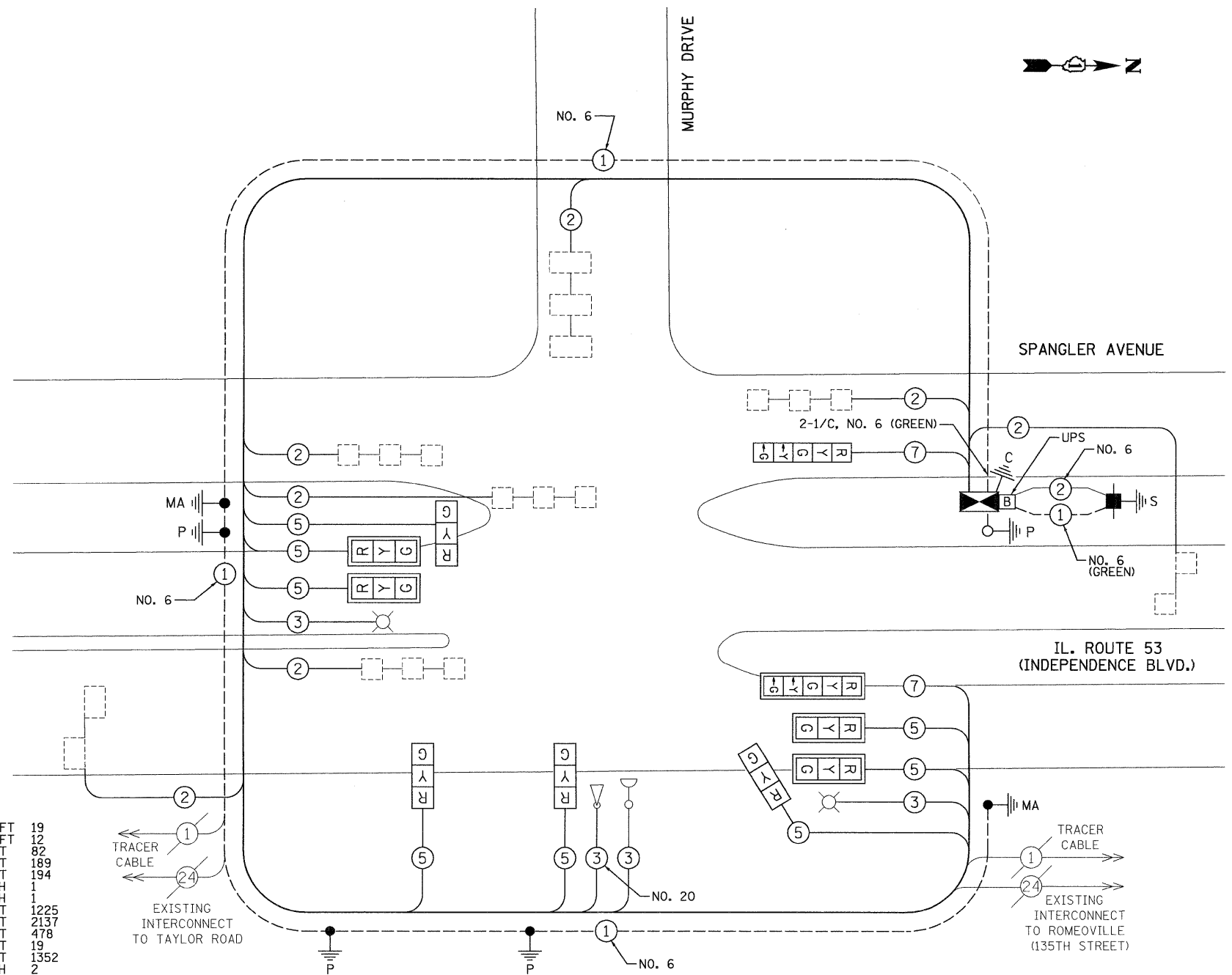
- EXISTING: [Symbol] 8" (200mm) TRAFFIC SIGNAL SECTION
- PROPOSED: [Symbol] 12" (300mm) TRAFFIC SIGNAL SECTION
- [Symbol] 12" (300mm) PEDESTRIAN SIGNAL SECTION
- [Symbol] 12" (300mm) PEDESTRIAN SIGNAL SECTION
- [Symbol] CONTROLLER CABINET
- [Symbol] SERVICE INSTALLATION
- [Symbol] TELEPHONE CONNECTION
- [Symbol] MAGNETIC DETECTOR
- [Symbol] EMERGENCY VEHICLE LIGHT DETECTOR
- [Symbol] CONFIRMATION BEACON
- [Symbol] PUSH-BUTTON DETECTOR
- [Symbol] VEHICLE DETECTOR, INDUCTION LOOP
- [Symbol] DENOTES NUMBER OF CONDUCTORS, ALL CABLE NO. 14 EXCEPT AS INDICATED. ALL LOOP DETECTOR CABLE TO BE SHIELDED.
- [Symbol] GROUND CABLE IN CONDUIT NO. 6 SOLID COPPER (GREEN)
- [Symbol] FIBER OPTIC CABLE IN CONDUIT NO. 62.5/125 2-MM12F SMI2F
- [Symbol] SIGNAL FACE WITH BACKPLATE, "P" INDICATES PROGRAMMED HEAD
- [Symbol] RAILROAD CONTROL CABINET
- [Symbol] ILLUMINATED SIGN "NO LEFT TURN"
- [Symbol] ILLUMINATED SIGN "NO RIGHT TURN"
- [Symbol] GROUND ROD AT HANDHOLE (H), DOUBLE HANDHOLE (HH), OR CONTROLLER (C)
- [Symbol] GROUND ROD AT POST (P), OR MAST ARM POLE (MA)
- [Symbol] GROUND ROD AT ELECTRIC SERVICE INSTALLATION
- [Symbol] UNINTERRUPTIBLE POWER SUPPLY

SCHEDULE OF QUANTITIES

SIGN PANEL, TYPE 1	SQ FT	19
RELOCATE SIGN PANEL, TYPE 1	SQ FT	12
THERMOPLASTIC PAVEMENT MARKING, LINE-12"	FOOT	82
CONDUIT IN TRENCH, 2 1/2" DIA., GALVANIZED STEEL	FOOT	189
TRENCH AND BACKFILL FOR ELECTRICAL WORK	FOOT	194
MAINTENANCE OF EXISTING TRAFFIC SIGNAL INSTALLATION	EACH	1
FULL-ACTUATED CONTROLLER IN EXISTING CABINET, SPECIAL	EACH	1
ELECTRIC CABLE IN CONDUIT, SIGNAL NO. 14 3C	FOOT	1225
ELECTRIC CABLE IN CONDUIT, SIGNAL NO. 14 5C	FOOT	2137
ELECTRIC CABLE IN CONDUIT, SIGNAL NO. 14 7C	FOOT	478
ELECTRIC CABLE IN CONDUIT, SERVICE, NO. 6 2C	FOOT	19
ELECTRIC CABLE IN CONDUIT, LEAD-IN, NO. 14 1 PAIR	FOOT	1352
TRAFFIC SIGNAL POST, GALVANIZED STEEL 14 FT.	EACH	2
TRAFFIC SIGNAL POST, GALVANIZED STEEL 18 FT.	EACH	1
STEEL COMBINATION MAST ARM ASSEMBLY AND POLE 22 FT.	EACH	1
STEEL COMBINATION MAST ARM ASSEMBLY AND POLE 36 FT.	EACH	1
CONCRETE FOUNDATION, TYPE A 30-INCH DIAMETER	FOOT	12
CONCRETE FOUNDATION, TYPE A 36-INCH DIAMETER	FOOT	15
SIGNAL HEAD, LED, 1-FACE, 3-SECTION, MAST-ARM MOUNTED	EACH	4
SIGNAL HEAD, LED, 1-FACE, 3-SECTION, BRACKET MOUNTED	EACH	4
SIGNAL HEAD, LED, 1-FACE, 5-SECTION, BRACKET MOUNTED	EACH	1
SIGNAL HEAD, LED, 1-FACE, 5-SECTION, MAST-ARM MOUNTED	EACH	1
TRAFFIC SIGNAL BACKPLATE, LOUVERED, ALUMINUM	EACH	5
REMOVE ELECTRIC CABLE FROM CONDUIT	FOOT	5189
REMOVE EXISTING TRAFFIC SIGNAL EQUIPMENT	EACH	1
REMOVE EXISTING CONCRETE FOUNDATION	EACH	4
CLEAN EXISTING ELECTRICAL MANHOLE OR HANDHOLE	EACH	4
SERVICE INSTALLATION, POLE MOUNT	EACH	1
RELOCATE EXISTING LUMINAIRE	EACH	2
ELECTRIC CABLE IN CONDUIT, GROUNDING, NO. 6 1C	FOOT	431
ELECTRIC CABLE IN CONDUIT, NO. 20 3/C, TWISTED & SHIELDED	FOOT	650
UNINTERRUPTIBLE POWER SUPPLY	EACH	1
REBUILD EXISTING HANDHOLE	EACH	2

FOUNDATION (DEPTH)	FT. (m)	CABLE SLACK	FT. (m)	VERTICAL	FT. (m)
TYPE A - POST	4 (1.2)	HANDHOLE	6.5 (2.0)	ALL FOUNDATIONS	3.0 (1.0)
D - CONTROLLER	4 (1.2)	DOUBLE HANDHOLE	13 (4.0)	MAST ARM (L) POLE	20.0 (6.0)
E - M. ARM POLE		SIGNAL POST	0 (0.0)	BRACKET MOUNTED	13 (4.0)
		24" (600mm)	10 (3.0)	PED. PUSH-BUTTON	6 (2.0)
		30" (750mm)	15 (4.6)	ELECTRIC SERVICE	13.5 (4.1)
				SERVICE TO GROUND	13.5 (4.1)
				POST MOUNTED	13 (4.0)

NOTE:
THE TRAFFIC SIGNAL CONTROL EQUIPMENT FOR THIS PROJECT SHALL BE "ECONOLITE" TO MATCH THE EXISTING ADJACENT SYSTEM.



CABLE PLAN

I.D.O.T TRAFFIC SIGNAL INSTALLATION ELECTRICAL SERVICE REQUIREMENTS

TYPE	NO. LAMPS	WATTAGE INCAND.	LED	%OPERATION	TOTAL WATTAGE
SIGNAL (RED)	10	135	17	0.50	85
(YELLOW)	10	135	25	0.25	62.5
(GREEN)	10	135	15	0.25	37.5
ARROW	4	135	12	0.10	4.8
PED. SIGNAL		90	25	1.00	
CONTROLLER	1	100	100	1.00	100
ILLUM. SIGN		84		0.05	
FLASHER				0.50	

ENERGY COSTS TO:
VILLAGE OF ROMEOVILLE
13 MONTROSE DRIVE
ROMEOVILLE, IL 60446

ENERGY SUPPLY CONTACT:
PHONE:
COMPANY:

FILE NAME =	USER NAME = RDS	DESIGNED - KK	REVISED -
MICROST\352072\ RT53 @MURPHY CAB.DGN		DRAWN - RDS	REVISED -
	PLOT SCALE = 1"=20'	CHECKED - BPT	REVISED -
	PLOT DATE = 03-18-09	DATE - 03-18-09	REVISED -

**STATE OF ILLINOIS
DEPARTMENT OF TRANSPORTATION**

**SCHEDULE OF QUANTITIES, CABLE PLAN AND PHASE DESIGNATION DIAGRAM
IL. ROUTE 53 (INDEPENDENCE BLVD.) AT MURPHY DRIVE**

SCALE: N.T.S.	SHEET NO. OF SHEETS	STA. TO STA.
---------------	---------------------	--------------

PREPARED BY:
CEMCON, Ltd.
Consulting Engineers, Land Surveyors & Planners
2280 White Oak Circle, Suite 100
Aurora, Illinois 60504-9675
Ph: 630.862.2100 Fax: 630.862.2199
E-Mail: cadd@cemcon.com Website: www.cemcon.com

F.A.P. RTE.	SECTION	COUNTY	TOTAL SHEETS	SHEET NO.
	2009-039 TS	WILL	20	14
CONTRACT NO. 60G44				
FED. ROAD DIST. NO. ILLINOIS FED. AID PROJECT				