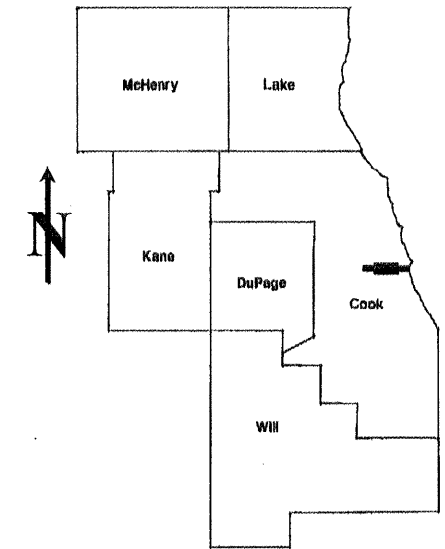


ROUTE	SECTION	COUNTY	TOTAL SHEETS	SHEET NUMBER
FAP 389	2009-043 PP	COOK	10	1

STATE OF ILLINOIS
DEPARTMENT OF TRANSPORTATION
DIVISION OF HIGHWAYS
DISTRICT ONE
PROPOSED HIGHWAY PLANS

CONTRACT NO. 60G55

D-91-501-09



LOCATION OF IMPROVEMENT INDICATED THUS:

FOR INDEX OF SHEETS SEE SHEET 2

PROJECT LOCATED IN THE CITY OF CHICAGO

FAP 389: CONGRESS PARKWAY
 AT SOUTH BRANCH CHICAGO RIVER
 ALTERNATE ROUTES
 SECTION: 2009-043 PP
 PCC PAVEMENT PATCHING

COOK COUNTY
 C-91-501-09

DISTRICT ONE - DESIGN - PLAN PREPARATION ENGINEER:
 KEN ENG / (847) 705-4247

CONTRACT NO. 60G55

STATE OF ILLINOIS
DEPARTMENT OF TRANSPORTATION
DIVISION OF HIGHWAYS
 SUBMITTED: MARCH 31, 2009
Diane M. O'Keefe
 DEPUTY DIRECTOR OF HIGHWAYS, REGION ENGINEER
May 8, 2009
Charles J. Ingersoll
 ENGINEER OF DESIGN AND ENVIRONMENT
May 8, 2009
Christine M. Reed
 DIRECTOR, DIVISION OF HIGHWAYS

PRINTED BY THE AUTHORITY
OF THE STATE OF ILLINOIS

J.U.L.I.E.: JOINT UTILITY LOCATION
INFORMATION FOR EXCAVATION
(312) 744-7000

INDEX OF SHEETS

<u>SHEET NO.</u>	<u>DESCRIPTION</u>
1	TITLE SHEET
2	INDEX OF SHEETS, STATE STANDARDS AND GENERAL NOTES
3	SUMMARY OF QUANTITIES
4	GENERAL LOCATION MAP
5	PATCHING SCHEDULE
6	FREEWAY ENTRANCE AND EXIT RAMP CLOSURE DETAILS
7	FREEWAY SINGLE & MULTI-LANE WEAVE
8-9	MULTI-LANE FREEWAY PAVEMENT MARKING DETAILS
10	FREEWAY SHOULDER CLOSURES AND PARTIAL RAMP CLOSURES

STATE STANDARDS

<u>STANDARD NO.</u>	<u>DESCRIPTION</u>
000001-05	TYPICAL SYMBOLS, ABBREVIATIONS AND PATTERNS
420001-07	PAVEMENT JOINTS
421001-02	BAR REINFORCEMENT FOR CRC PAVEMENT
442001-04	CLASS A PATCHES
701400-03	APPROACH TO LANE CLOSURE, FREEWAY/EXPRESSWAY
701401-05	LANE CLOSURE, FREEWAY/EXPRESSWAY
701446-01	TWO LANE CLOSURE, FREEWAY/EXPRESSWAY
701901-01	TRAFFIC CONTROL DEVICES

GENERAL NOTES

BEFORE STARTING ANY EXCAVATION, THE CONTRACTOR SHALL CALL "C.U.A.N." (CHICAGO UTILITY ALERT NETWORK) AT (312) 744-7000 FOR FIELD LOCATIONS OF BURIED ELECTRIC, TELEPHONE AND GAS UTILITIES (48 HOUR NOTIFICATION IS REQUIRED).

THE CONTRACTOR SHALL COORDINATE CONSTRUCTION ACTIVITIES WITH UTILITY COMPANIES AND THE CITY OF CHICAGO.

THE CONTRACTOR WILL NOT BE ALLOWED TO SET UP A YARD OR FIELD OFFICE ON STATE (OR TOLLWAY) PROPERTY WITHOUT WRITTEN PERMISSION FROM THE DEPARTMENT.

WHEN ARTIFICIAL LIGHTING IS UTILIZED IN NIGHT OPERATIONS, THE CONTRACTOR SHALL EXERCISE THE UTMOST PRECAUTIONS IN PREVENTING ADVERSE VISIBILITY TO THE MOTORING PUBLIC AND ADJOINING RESIDENTIAL AREAS.

ANY PAVEMENT MARKINGS AND RAISED REFLECTIVE PAVEMENT MARKERS OBLITERATED BY MILLING AND RESURFACING OPERATIONS ON SIDE STREETS AND ENTRANCES SHALL BE REPLACED AND PAID FOR IN KIND.

BEFORE BEGINNING ANY WORK, THE CONTRACTOR SHALL RETAIN AND RECORD FOR FUTURE REFERENCE, ALL EXISTING PAVEMENT MARKING LINES (AND RAISED REFLECTIVE PAVEMENT MARKERS) IN ORDER THAT THESE LOCATIONS CAN BE RE-ESTABLISHED FOR STRIPING. EXACT LOCATIONS OF ALL PAVEMENT MARKINGS SHALL BE AS DIRECTED BY THE ENGINEER.

ALL PAVEMENT PATCHING LOCATIONS WILL BE DETERMINED IN THE FIELD BY THE ENGINEER.

THE CONTRACTOR SHALL CONTACT THE DISTRICT ONE TRAFFIC CONTROL SUPERVISOR AT (847) 705-4155 A MINIMUM OF 72 HOURS IN ADVANCE OF BEGINNING WORK.

THE EXISTING ROADWAY TYPICAL SECTION IS ASSUMED TO BE 10 INCH CONTINUOUSLY REINFORCED CONCRETE PAVEMENT.

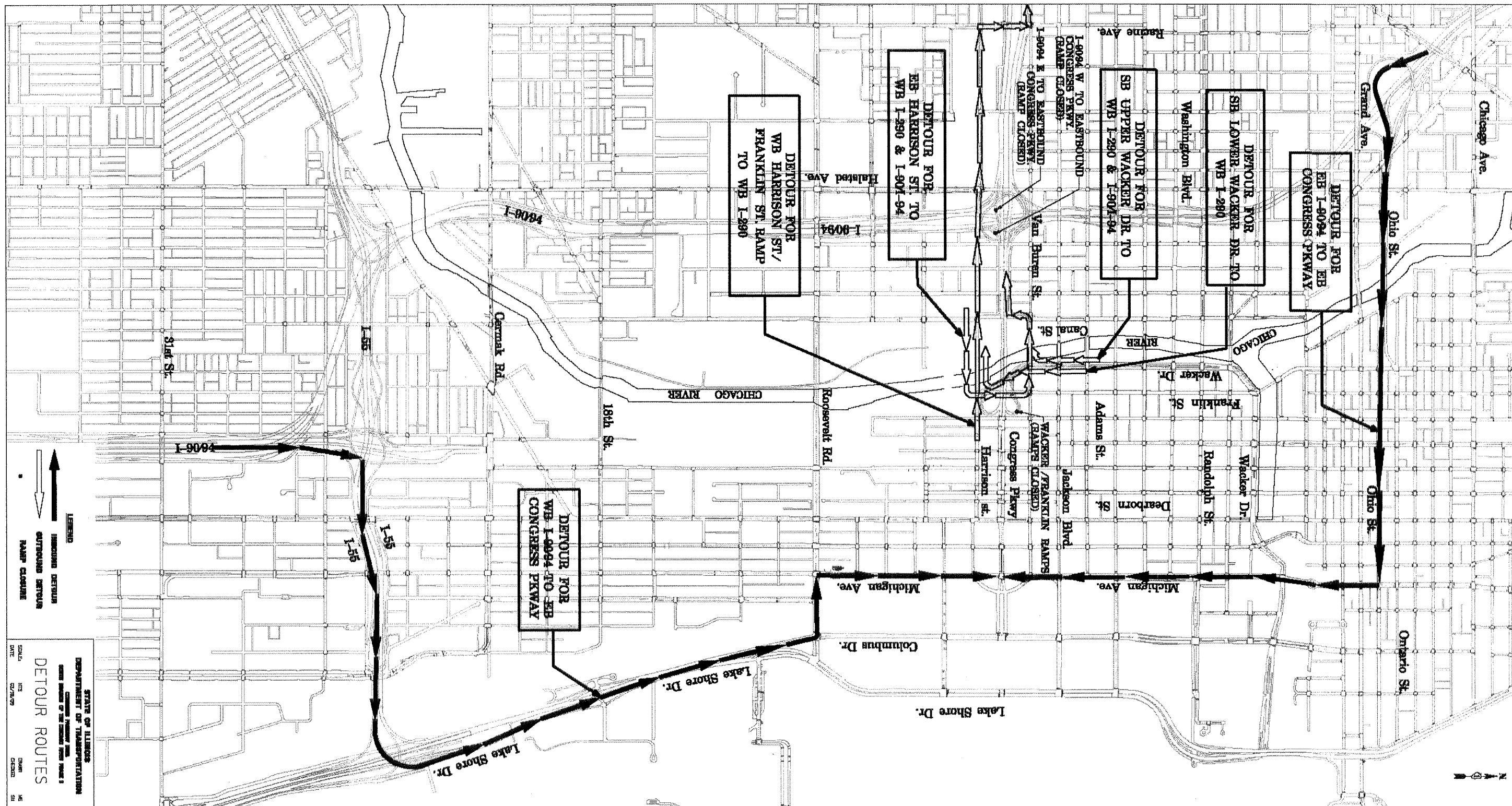
THE CONTRACTOR IS REQUIRED TO GET THE PROPER PERMITS FROM THE CITY OF CHICAGO PRIOR TO THE START OF ANY WORK.

CLASS PP-3 PORTLAND CEMENT CONCRETE IS TO BE USED FOR ALL CLASS A PATCHES.

FILE NAME =	USER NAME = wilgreendp	DESIGNED -	REVISED - 5/1/09 - DW	STATE OF ILLINOIS DEPARTMENT OF TRANSPORTATION	INDEX OF SHEETS, STATE STANDARDS AND GENERAL NOTES CONGRESS PARKWAY DETOUR & ALTERNATE ROUTES	F.A. RTE.	SECTION	COUNTY	TOTAL SHEETS	SHEET NO.
0:\pwork\PWIDT\WILGREENDP\08125109\Design.dgn	DRAWN -	REVISED -	VAR.			2009-043 PP	COOK	10	2	
PLOT SCALE = 100.0000 ' / IN.	CHECKED -	REVISED -	CONTRACT NO. 60G55							
PLOT DATE = 5/1/2009	DATE -	REVISED -	FED. ROAD DIST. NO. 1 ILLINOIS FED. AID PROJECT							
SCALE:		SHEET NO. OF SHEETS		STA. TO STA.						

SUMMARY OF QUANTITIES				CONSTRUCTION TYPE CODE					SUMMARY OF QUANTITIES				CONSTRUCTION TYPE CODE				
CODE NO	ITEM	UNIT	URBAN 100% STATE TOTAL QUANTITIES	1000-					CODE NO	ITEM	UNIT	TOTAL QUANTITIES					
42101300	PROTECTIVE COAT	SO YD	164	164													
44200553	CLASS A PATCHES, TYPE II, 10 INCH	SO YD	84	84													
44200557	CLASS A PATCHES, TYPE III, 10 INCH	SO YD	48	48													
44200559	CLASS A PATCHES, TYPE IV, 10 INCH	SO YD	32	32													
44213000	PATCHING REINFORCEMENT	SO YD	164	164													
44213200	SAW CUTS	FOOT	587	587													
67100100	MOBILIZATION	L SUM	1	1													
70103816	TRAFFIC CONTROL SURVEILLANCE	CAL DA	5	5													
*78008210	POLYUREA PAVEMENT MARKING TYPE I - LINE 4"	FOOT	100	100													
*78008220	POLYUREA PAVEMENT MARKING TYPE I - LINE 5"	FOOT	50	50													
X7011015	TRAFFIC CONTROL AND PROTECTION (EXPRESSWAYS)	L SUM	1	1													
X7013820	TRAFFIC CONTROL SURVEILLANCE, EXPRESSWAYS	CAL DA	5	5													
X0325702	NIGHTTIME WORK ZONE LIGHTING	L SUM	1	1													
* SPECIALTY ITEM																	

Rev.



LEGEND
 ↑ IMPROVED DETOUR
 ↓ OUTROUS DETOUR
 • RAMP CLOSURE

STATE OF ILLINOIS
 DEPARTMENT OF TRANSPORTATION
 CONGRESS PARKWAY DETOUR ROUTES
 SCALE: 1/2" = 100'-0" (VERTICAL)
 DATE: 4/1/2009

FILE NAME =	USER NAME = wilgreendp
ex:\ppl\work\PWIDOT\WILGREENDP\012518\Design.dgn	
PLOT SCALE = 100.0000' / 1" IN.	
PLOT DATE = 4/1/2009	

DESIGNED -	REVISD -
DRAWN -	REVISD -
CHECKED -	REVISD -
DATE -	REVISD -

STATE OF ILLINOIS
DEPARTMENT OF TRANSPORTATION

GENERAL LOCATION MAP			
CONGRESS PARKWAY DETOUR ROUTES			
SCALE:	SHEET NO. OF SHEETS	STA.	TO STA.

F.A. RTE.	SECTION	COUNTY	TOTAL SHEETS	SHEET NO.
VAR.	2009-043 PP	COOK	10	4
CONTRACT NO. 60655			ILLINOIS FED. AID PROJECT	

CONGRESS PARKWAY DETOUR ROUTE

ROUTE: LAKE SHORE DR. (I-55 TO ROOSEVELT RD.)

CROSS STREETS		DIRECTION (EB/WB) (NB/SB)	LANE NO. (1, 2, 3)	PAVEMENT PATCH WIDTH	PAVEMENT PATCH LENGTH	REPAIR AREA (SQ FT)	REPAIR AREA (SQ YD)
FROM	TO						
I-55	ROOSEVELT RD.	NB	4	12	4.5	54.0	6.0
I-55	ROOSEVELT RD.	NB	4	12	6	72.0	8.0
I-55	ROOSEVELT RD.	NB	5	12	12	144.0	16.0
I-55	ROOSEVELT RD.	NB	4	12	12	144.0	16.0
I-55	ROOSEVELT RD.	NB	3	12	4.5	54.0	6.0
I-55	ROOSEVELT RD.	NB	3 & 4	24	5	120.0	13.3
I-55	ROOSEVELT RD.	NB	4	12	4.5	54.0	6.0
I-55	ROOSEVELT RD.	NB	3	12	5	60.0	6.7
I-55	ROOSEVELT RD.	NB	1	12	4.5	54.0	6.0
I-55	ROOSEVELT RD.	NB	1	12	6	72.0	8.0
I-55	ROOSEVELT RD.	NB	2	12	4.5	54.0	6.0
I-55	ROOSEVELT RD.	NB	2 & 3	24	4.5	108.0	12.0
I-55	ROOSEVELT RD.	NB	3	12	4.5	54.0	6.0
I-55	ROOSEVELT RD.	NB	3 & 4	24	12	288.0	32.0

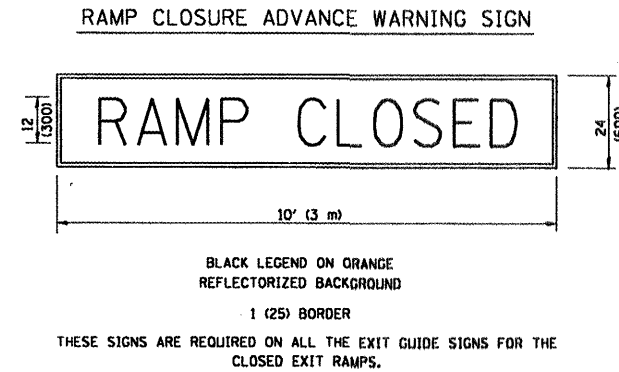
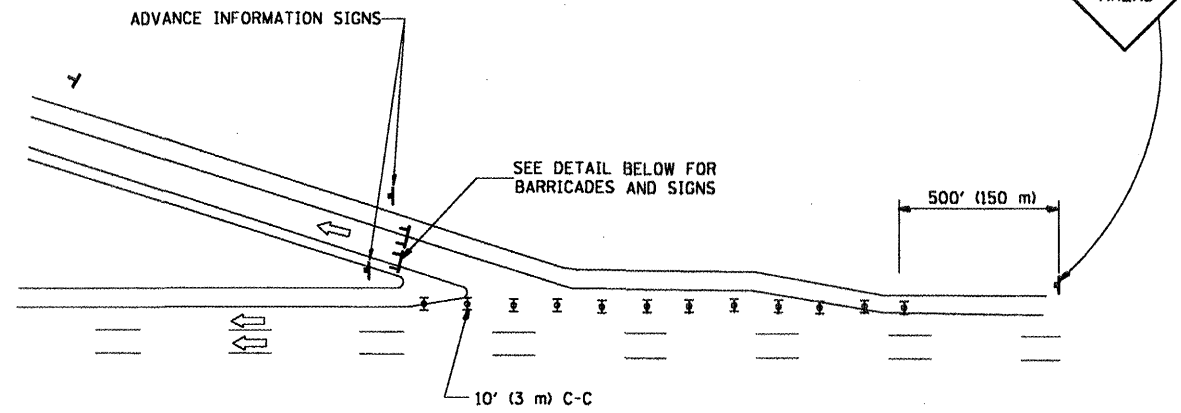
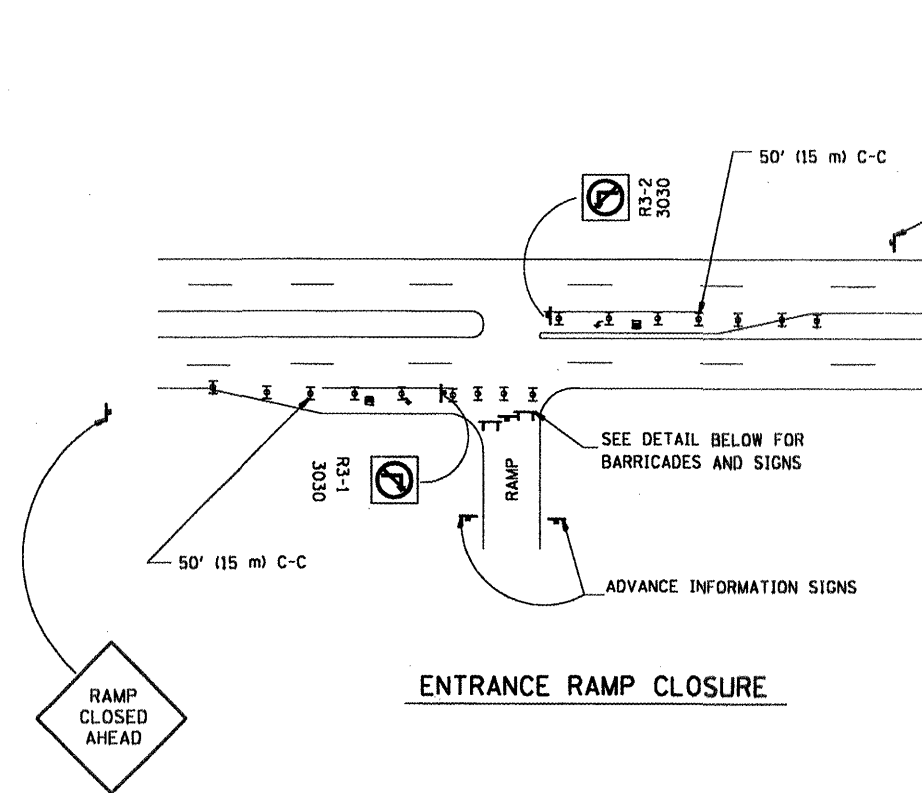
148.0
SY

OTHER LOCATION (NON-DETOUR)

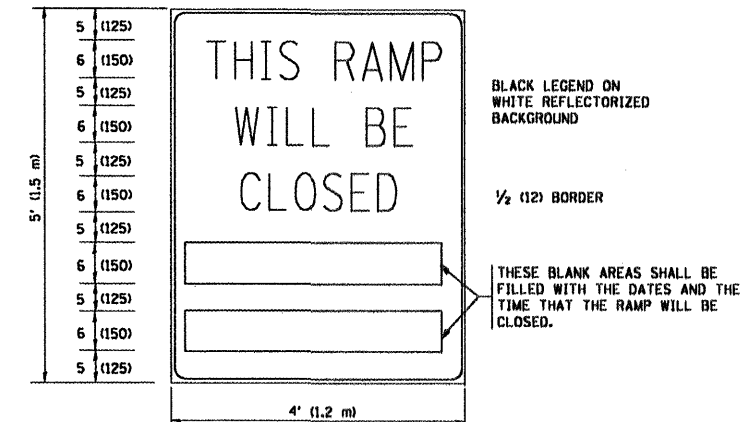
ROUTE: I-90/94 (DAN RYAN EXPY.) SB EXPRESS LANES AT W. 29TH ST.

CROSS STREETS		DIRECTION (EB/WB) (NB/SB)	LANE NO. (1, 2, 3)	PAVEMENT PATCH WIDTH	PAVEMENT PATCH LENGTH	REPAIR AREA (SQ FT)	REPAIR AREA (SQ YD)
FROM	TO						
I-90/94 SB EXPRESS LANES FROM HIGH BRIDGE		SB	1	12	6	72.0	8.0
APPROX. 200' SOUTH OF W. 29TH ST.		SB	2	12	6	72.0	8.0

16.0
SY



RAMP CLOSURE ADVANCE INFORMATION SIGN



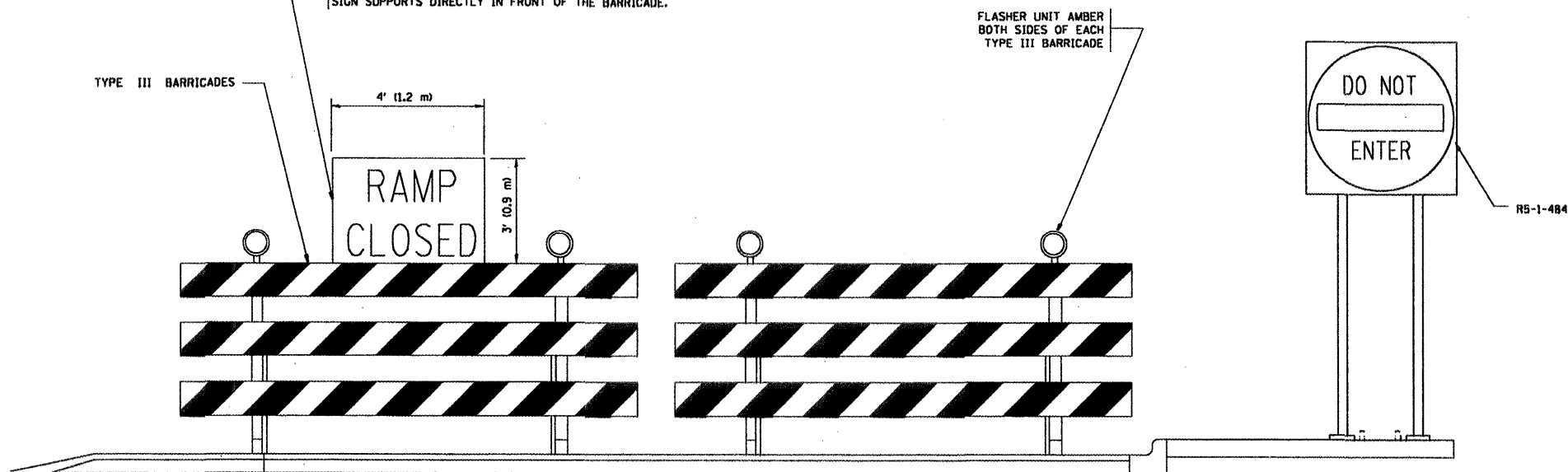
THESE SIGNS ARE REQUIRED ON BOTH SIDES OF THE RAMP, MINIMUM OF 1 WEEK IN ADVANCE OF THE CLOSURE.

GENERAL NOTES:

1. CONES MAY BE SUBSTITUTED FOR DRUMS OR TYPE II BARRICADES DURING DAY OPERATIONS. CONES SHALL BE A MINIMUM OF 28 (700) HIGH.
2. STEADY BURN LIGHTS WILL NOT BE REQUIRED FOR DAY OPERATIONS.
3. A FLAGGER SHALL BE POSITIONED AT EACH CLOSED RAMP THAT IS OPEN TO CONSTRUCTION VEHICLES.
4. ALL ROUTE MARKERS AND TRAILBLAZER ASSEMBLIES WHICH DIRECT MOTORISTS TO A CLOSED ENTRANCE RAMP SHALL BE COVERED.
5. THE SIGNING AND BARRICADING WHICH IS REQUIRED BY THIS DETAIL SHALL BE INCLUDED IN THE COST OF TRAFFIC CONTROL AND PROTECTION (EXPRESSWAYS).
6. AUTHORIZATION FROM THE DISTRICT'S BUREAU OF TRAFFIC IS REQUIRED FOR ALL RAMP CLOSURES.
7. THE RAMP CLOSURE ADVANCE INFORMATION SIGNS SHALL BE ERECTED IF THE CLOSURE TIME EXCEEDS TWENTY-FOUR (24) HOURS. ADDITIONAL ADVANCE WARNING SIGNS ON EXIT GUIDE SIGNING WILL BE REQUIRED FOR EXIT RAMP CLOSURES THAT EXCEED TWENTY FOUR (24) HOURS IN LENGTH.

ALL DIMENSIONS ARE IN INCHES (MILLIMETERS) UNLESS OTHERWISE SHOWN.

THE "RAMP CLOSED" SIGN SHALL BE B/W WITH 8 (200) CAPS. IF A TYPE III BARRICADE WITH AN ATTACHED SIGN PANEL WHICH MEETS NCHRP 350 IS NOT AVAILABLE, THE SIGNS MAY BE MOUNTED ON NCHRP 350 TEMPORARY SIGN SUPPORTS DIRECTLY IN FRONT OF THE BARRICADE.



SYMBOLS

- ☐ TYPE II BARRICADE, DRUM OR VERTICAL BARRICADE WITH STEADY BURN MONO-DIRECTIONAL LIGHT
- ☐ TYPE III BARRICADE WITH FLASHING LIGHT

**STATE OF ILLINOIS
DEPARTMENT OF TRANSPORTATION**

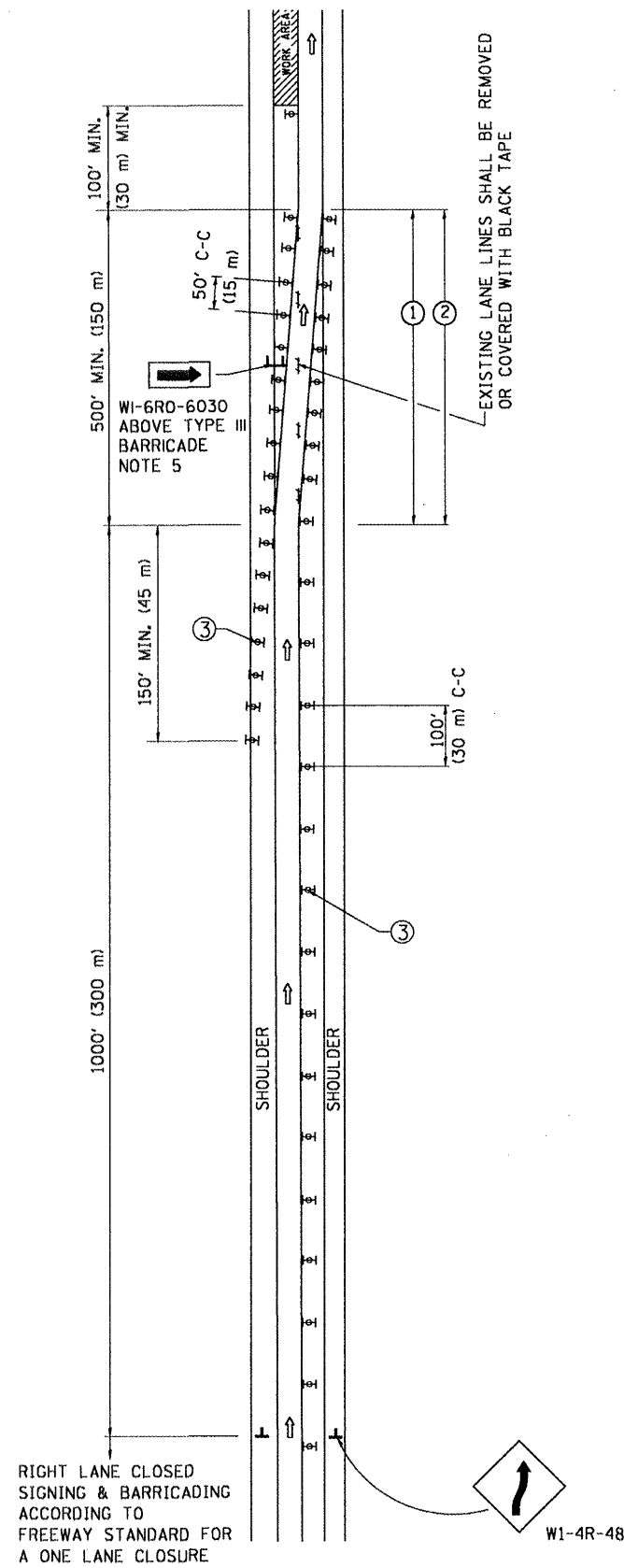
**FREEWAY ENTRANCE AND EXIST RAMP
CLOSURE DETAILS**

SCALE: NONE SHEET NO. 1 OF 1 SHEETS STA. TO STA.

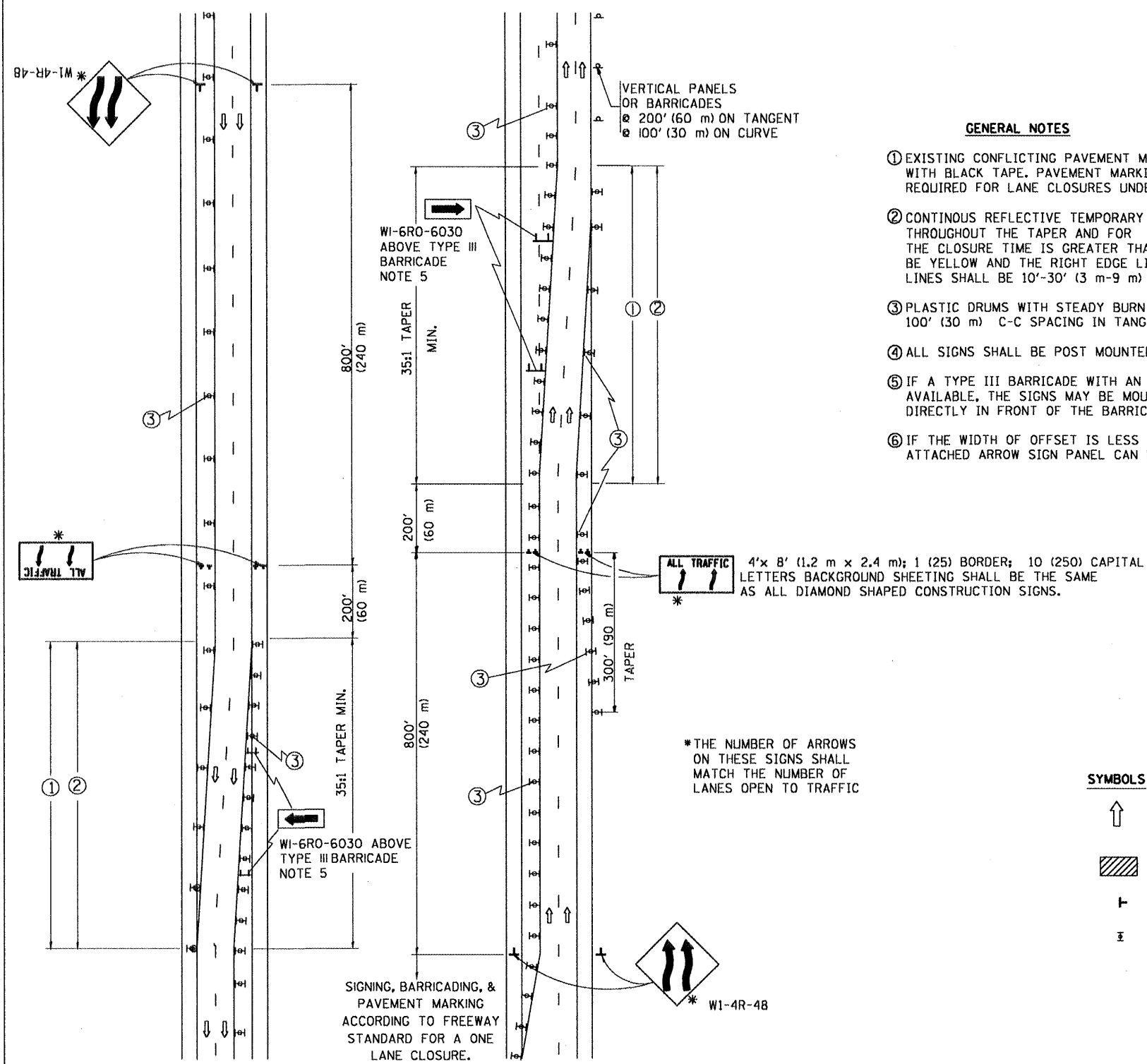
F.A. RTE.	SECTION	COUNTY	TOTAL SHEETS	SHEET NO.
VAR.	2009-043 PP	COOK	10	6
TC-08		CONTRACT NO. 60658		
FED. ROAD DIST. NO. 1 ILLINOIS FED. AID PROJECT				

FILE NAME =	USER NAME = wilgreendp	DESIGNED - DWS	REVISED - DWS 12-94
ct:\pwork\puidot\wilgreendp\d0125109\01	e5td.dgn	DRAWN -	REVISED - DWS/JAF 12-02
PLOT SCALE = 100.0000' / IN.	CHECKED -	DATE - 02-83	REVISED - JAF 02-06
PLOT DATE = 3/31/2009	DATE -		REVISED - SPB 01-07

SINGLE LANE WEAVE



MULTI-LANE WEAVE



GENERAL NOTES

- ① EXISTING CONFLICTING PAVEMENT MARKING LINES SHALL BE REMOVED OR COVERED WITH BLACK TAPE. PAVEMENT MARKING REMOVAL OR BLACK TAPE SHALL NOT BE REQUIRED FOR LANE CLOSURES UNDER 24 HOURS IN DURATION.
- ② CONTINUOUS REFLECTIVE TEMPORARY PAVEMENT MARKING TAPE SHALL BE PLACED THROUGHOUT THE TAPER AND FOR 300' (90 m) ALONG SIDE THE WORK AREA WHERE THE CLOSURE TIME IS GREATER THAN FOURTEEN DAYS. THE LEFT EDGE LINE SHALL BE YELLOW AND THE RIGHT EDGE LINE SHALL BE WHITE. FOR MULTI-LANE WEAVE LANE LINES SHALL BE 10'-30' (3 m-9 m) SKIP DASH, WHITE.
- ③ PLASTIC DRUMS WITH STEADY BURN LIGHTS AT 50' (15 m) C-C SPACING IN TAPERS AND 100' (30 m) C-C SPACING IN TANGENTS.
- ④ ALL SIGNS SHALL BE POST MOUNTED IF THE CLOSURE TIME EXCEEDS FOUR DAYS.
- ⑤ IF A TYPE III BARRICADE WITH AN ATTACHED SIGN PANEL WHICH MEETS NCHRP 350 IS NOT AVAILABLE, THE SIGNS MAY BE MOUNTED ON NCHRP 350 TEMPORARY SIGN SUPPORTS DIRECTLY IN FRONT OF THE BARRICADE.
- ⑥ IF THE WIDTH OF OFFSET IS LESS THAN 6' THEN THE TYPE III BARRICADE WITH ATTACHED ARROW SIGN PANEL CAN BE ELIMINATED IN THE TAPER AREAS.

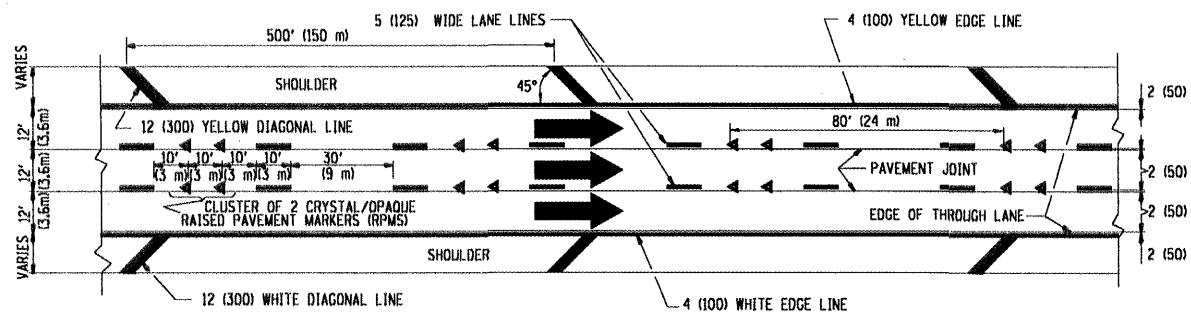
SYMBOLS

- ↑ DIRECTION OF TRAFFIC
- ▨ WORK AREA
- ┆ SIGN ON PORTABLE OR PERMANENT SUPPORT
- ⊞ TYPE II BARRICADE, DRUM OR VERTICAL BARRICADE WITH MONO-DIRECTIONAL STEADY BURNING LIGHT

ALL DIMENSIONS ARE IN INCHES (MILLIMETERS) UNLESS OTHERWISE SHOWN

FILE NAME =	USER NAME = wlgreendp	DESIGNED - DWS	REVISED - DWS 11-96	STATE OF ILLINOIS DEPARTMENT OF TRANSPORTATION	TRAFFIC CONTROL DETAILS FOR FREEWAY SINGLE & MULTI-LANE WEAVE	F.A. RTE.	SECTION	COUNTY	TOTAL SHEETS	SHEET NO.
o:\pwork\pwork\wlgreendp\1025109\std.dgn	DRAWN -	REVISED - JAF 01-03	VAR 2009-043 PP			COOK	10	7		
PLOT SCALE = 100.0000' / IN.	CHECKED -	REVISED - JAF 02-06	TC-09			CONTRACT NO. 60655				
PLOT DATE = 3/31/2009	DATE - 02-07	REVISED - SPB 01-07	FED. ROAD DIST. NO. 1			ILLINOIS	FED. AID PROJECT			
				SCALE: NONE	SHEET NO. 1 OF 1 SHEETS	STA.	TO STA.			

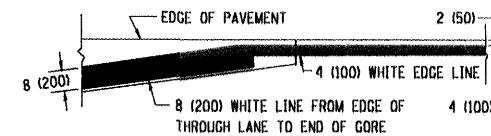
THE DIAGONAL LINES SHALL BE SPACED AT 40' (12 m) C-C ACROSS ALL STRUCTURES WHICH ARE 500' (150 m) OR LESS IN LENGTH
 THE DIAGONAL LINES ARE NOT REQUIRED ON SHOULDERS WHICH ARE 6' (1.8 m) OR LESS IN WIDTH



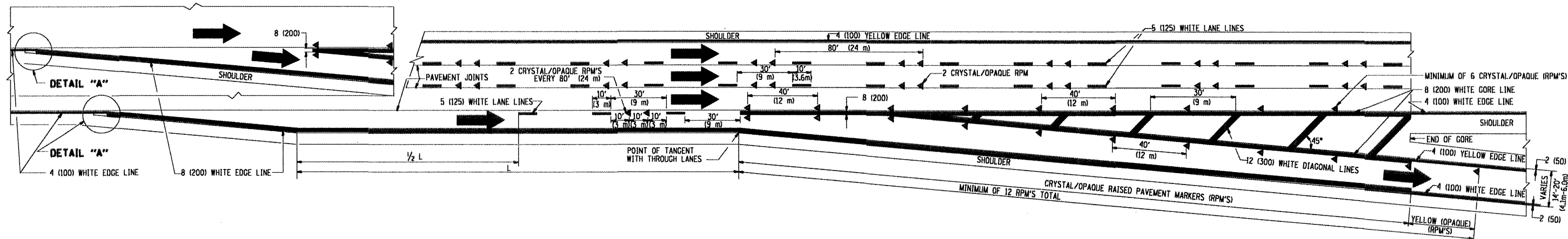
TYPICAL EDGE LINES & LANE LINES

NOTES:

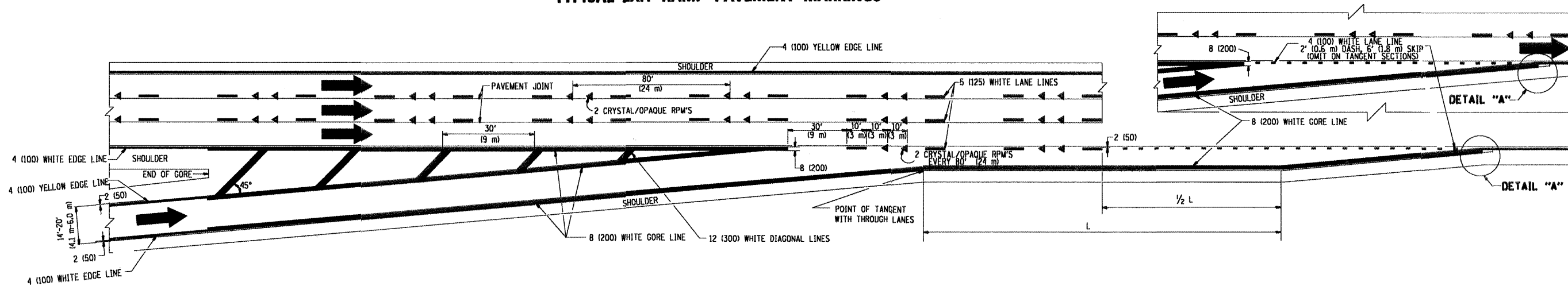
1. THERMO PLASTIC PAVEMENT MARKING LINE SHALL BE USED FOR THE EDGE LINES, GORE LINES, AND DIAGONAL LINES ON BITUMINOUS PAVEMENT ONLY.
2. PREFORMED PLASTIC TYPE B PAVEMENT MARKING LINE SHALL BE USED FOR ALL LANE LINES ON BITUMINOUS PAVEMENT
3. POLYUREA PAVEMENT MARKING SHALL BE USED FOR ALL MARKINGS ON PCC



DETAIL "A"

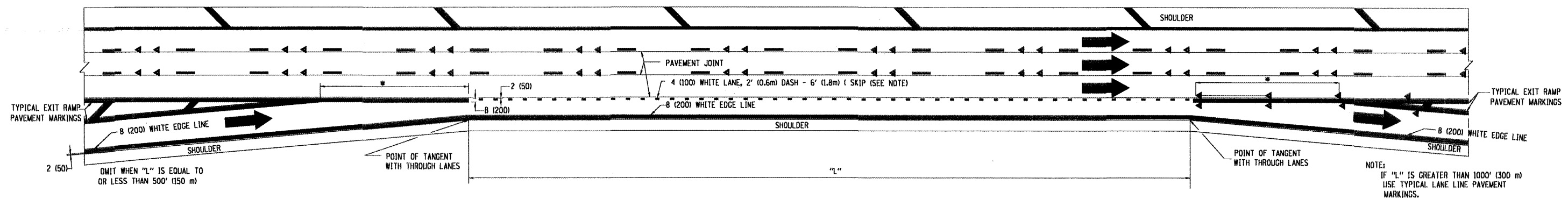


TYPICAL EXIT RAMP PAVEMENT MARKINGS

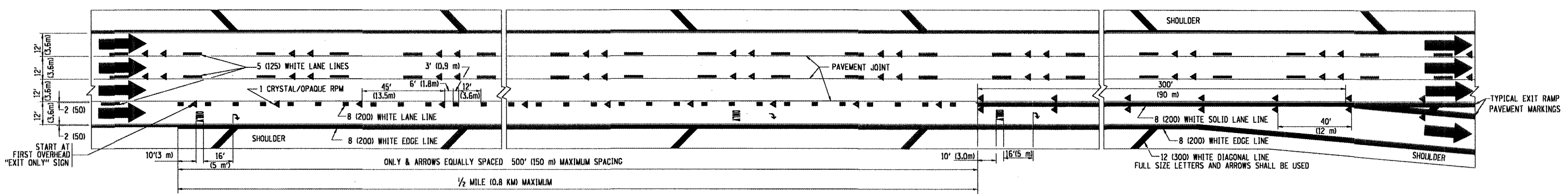


TYPICAL ENTRANCE RAMP PAVEMENT MARKINGS

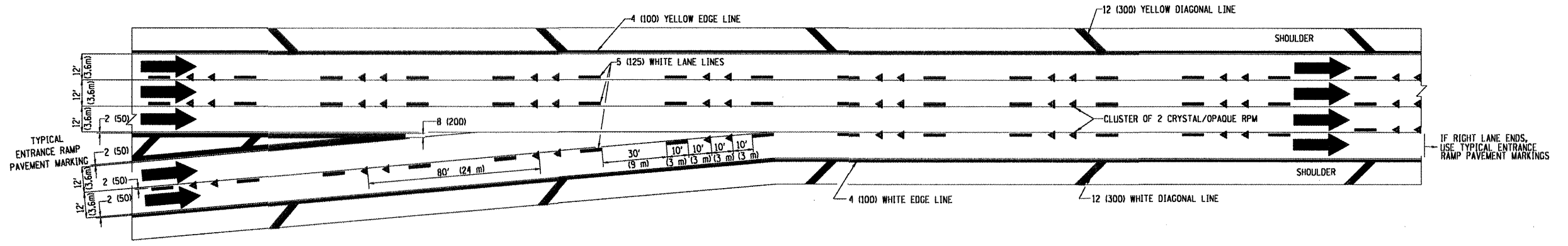
FILE NAME =	USER NAME = wilgreendp	DESIGNED - D.W.S.	REVISED - A.H. 03-96	STATE OF ILLINOIS DEPARTMENT OF TRANSPORTATION	MULTI-LANE FREEWAY PAVEMENT MARKING DETAILS		F.A. RTE. =	SECTION	COUNTY	TOTAL SHEETS	SHEET NO.
ca:\pav\work\pav\wilgreendp\01251099.D	151.dgn	DRAWN -	REVISED - D.W.S. 07-96		SCALE: NONE	SHEET NO. 1 OF 2 SHEETS	STA.	VAR. 2009-043 PP	COOK	10	8
		CHECKED -	REVISED - J.A.F. 02-06					TC-12			
		DATE - 01-90	REVISED - S.P.B. 01-07					CONTRACT NO. 6065'S			
							FED. ROAD DIST. NO. 1 ILLINOIS FED. AID PROJECT				



TYPICAL ENTRANCE/EXIT RAMP COMBINATION PAVEMENT MARKINGS



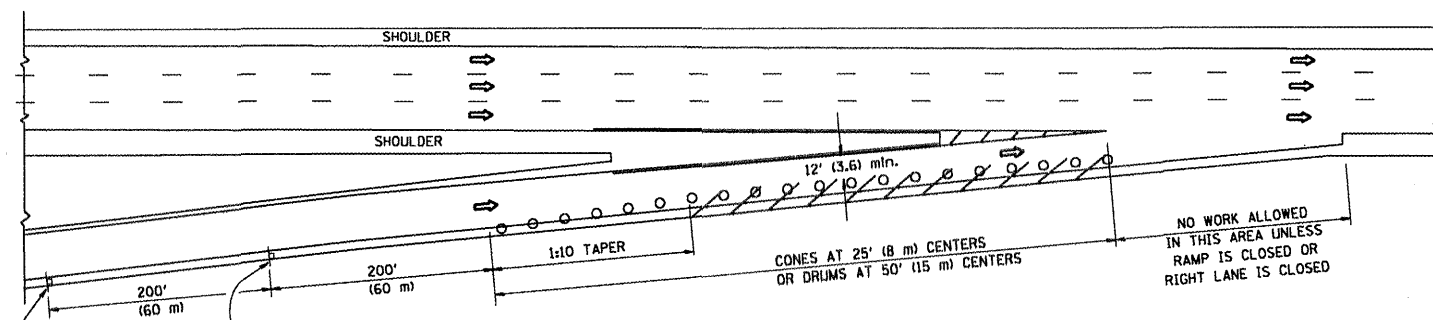
TYPICAL EXIT ONLY LANE PAVEMENT MARKINGS



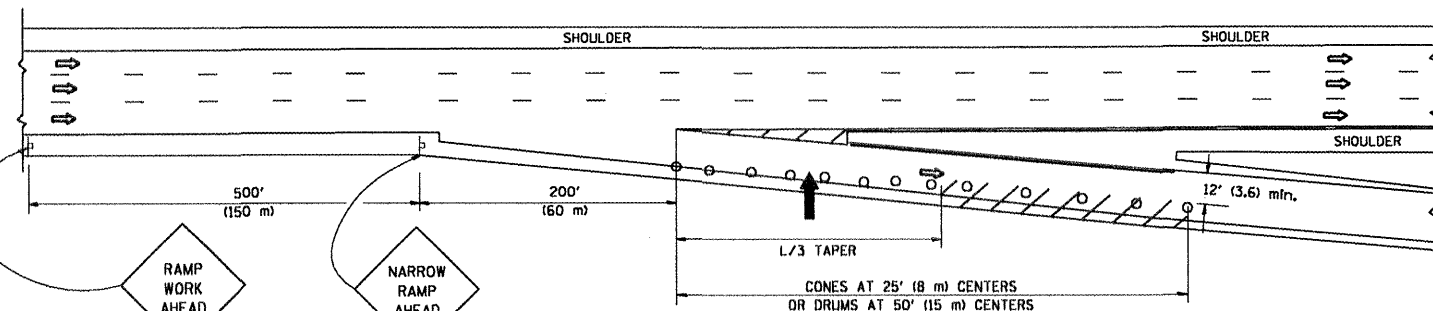
TYPICAL TWO LANE ENTRANCE RAMP PAVEMENT MARKINGS

FILE NAME =	USER NAME = wjgreendp	DESIGNED - D.W.S.	REVISED - A.H. 03-96	STATE OF ILLINOIS DEPARTMENT OF TRANSPORTATION	MULTI-LANE FREEWAY PAVEMENT MARKING DETAILS			F.A. RTE.	SECTION	COUNTY	TOTAL SHEETS	SHEET NO.	
PLT SCALE = 1/8" = 1'-0"	PLT DATE = 3/31/2009	DRAWN -	REVISED - D.W.S. 07-96		SCALE: NONE	SHEET NO. 2 OF 2 SHEETS	STA.	TO STA.	VAR 2009-043PP	COOK	10	9	
		CHECKED -	REVISED - J.A.F. 02-06						TC-12				
		DATE - 01-90	REVISED - S.P.B. 01-07						FED. ROAD DIST. NO. 1	ILLINOIS	FED. AID PROJECT		CONTRACT NO. 60055

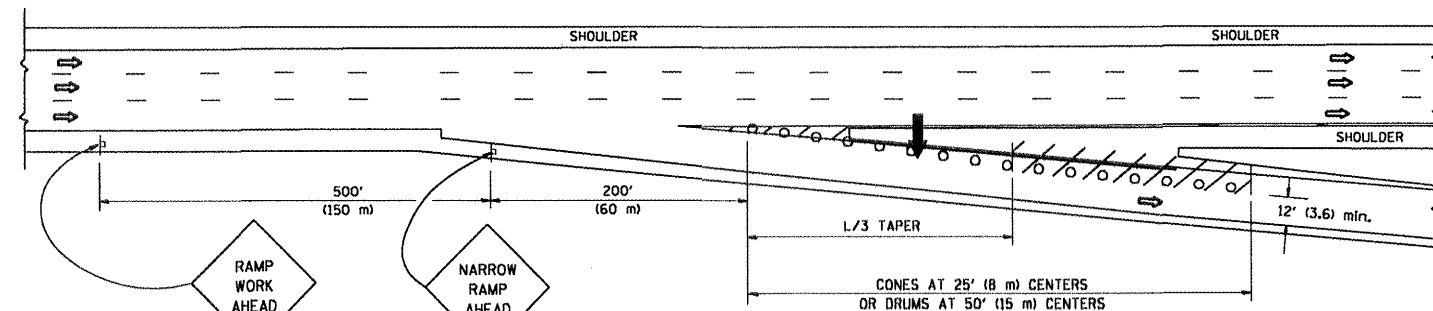
PARTIAL RAMP CLOSURE DETAILS



TYPICAL ENTRANCE RAMP



TYPICAL EXIT RAMP



TYPICAL EXIT RAMP

SYMBOLS

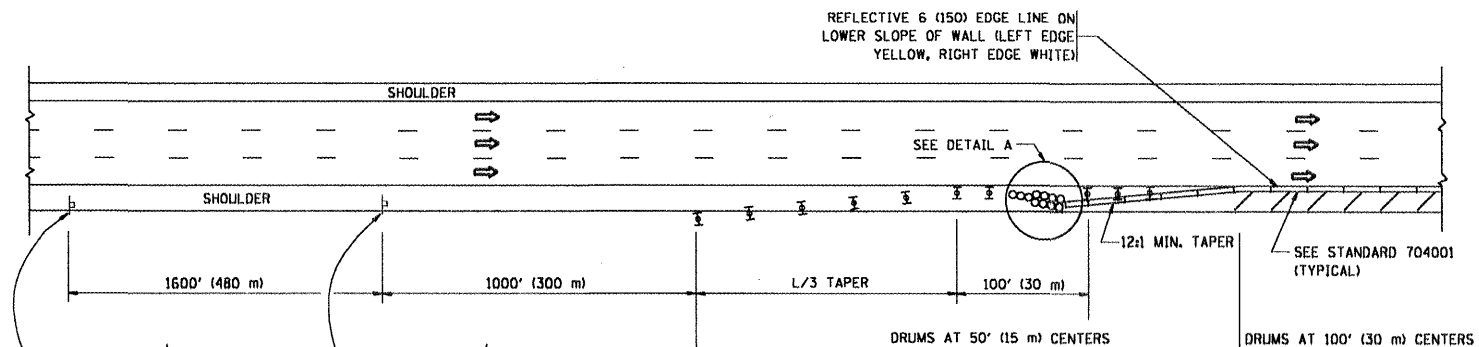
- ➔ ARROWBOARD
- ▨ WORK AREA
- ⊥ SIGN ON PORTABLE OR PERMANENT SUPPORT
- FLAGGER WITH CONTROL SIGN
- ⊓ TYPE II BARRICADE, DRUM OR VERTICAL BARRICADE WITH STEADY BURN MONO-DIRECTIONAL LIGHT
- CONE, DRUM OR BARRICADE

GENERAL NOTES

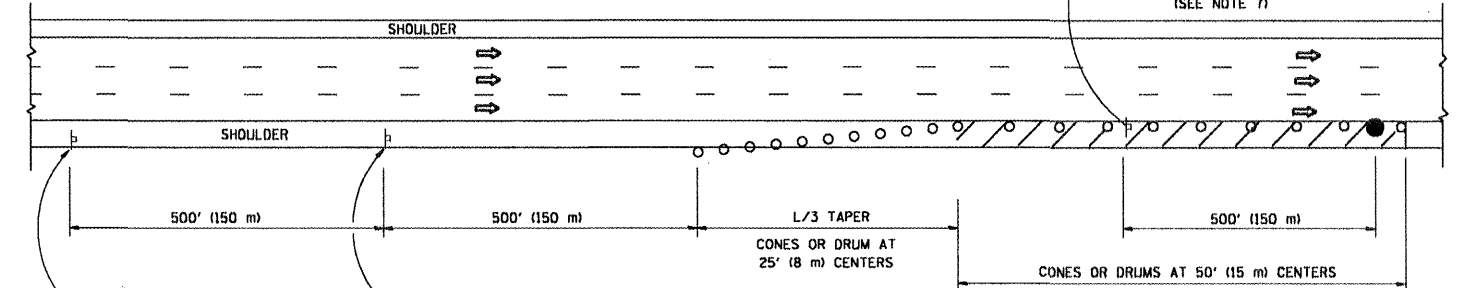
1. THE "L" DISTANCE EQUALS:

SPEED LIMIT	FORMULAS
45 mph (80 km/h) OR GREATER:	METRIC: $L=0.65(WXS)$
	ENGLISH: $L=(WXS)$
	W = WIDTH OF OFFSET IN FEET (METERS)
	S = NORMAL POSTED SPEED MPH (KM/H)
2. PLASTIC DRUMS WITH HIGH PERFORMANCE REFLECTIVE SHEETING AND STEADY BURNING LIGHTS ARE REQUIRED FOR ALL NIGHTTIME CLOSURES.
3. ALL SIGNS SHALL BE POST MOUNTED IF THE CLOSURE TIME EXCEEDS FOUR DAYS.
4. FLASHING LIGHTS SHALL BE USED DURING THE HOURS OF DARKNESS AND SHALL BE INSTALLED ABOVE THE FIRST TWO SETS OF SIGNS.
5. THE IMPACT ATTENUATOR, TEMPORARY IS NOT REQUIRED WHEN THE TEMPORARY CONCRETE BARRIER WALL IS PROTECTED BY OR IS TIED INTO THE EXISTING GUARDRAIL. IF OFFSET IS LESS THAN 5 FEET USE "TRAFFIC BARRIER TERMINAL, TYPE III, TEMPORARY" DEVICE TO MEET NCHRP350 FOR POSTED SPEED.
6. AUTHORIZATION FROM THE DISTRICT'S BUREAU OF TRAFFIC IS REQUIRED FOR ALL FREEWAY CLOSURES.
7. THE FLAGGER AND FLAGGER SIGN ARE REQUIRED AT THE ABOVE WORK SITES WHEN:
 - a. FOUR OR MORE WORK VEHICLES ENTER THE TRAFFIC LANES IN A ONE HOUR PERIOD.
 - b. THE WORK AVTIVITY REQUIRES FREQUENT ENCROACHMENT INTO THE LANE OPEN TO TRAFFIC.
 THE FLAGGER SHALL BE STATIONED APPROXIMATELY 100' (30 m) TO 200' (60 m) IN ADVANCE OF THE WORKERS.

SHOULDER CLOSURE DETAILS

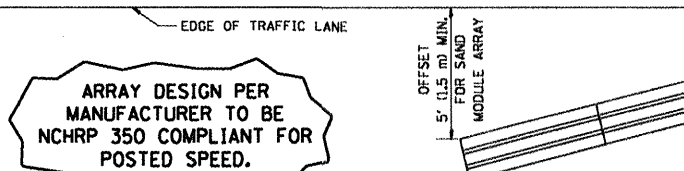


PERMANENT SHOULDER CLOSURE



DAYTIME SHOULDER CLOSURE

THIS DETAIL IS USED WHERE:
 1. VEHICLES, EQUIPMENT, WORKERS OR THEIR ACTIVITIES ENCROACH IN AN AREA CLOSER THAN 15' (4.5 m) TO THE EDGE OF PAVEMENT FOR A PERIOD IN EXCESS OF 15 MINUTES.



**DETAIL "A"
 IMPACT ATTENUATOR, TEMPORARY
 (SEE NOTE 5)**

ALL DIMENSIONS ARE IN INCHES (MILLIMETERS) UNLESS OTHERWISE SHOWN.

FILE NAME =	USER NAME = wjgreendp	DESIGNED -	REVISED - J.A.F. 12-02	STATE OF ILLINOIS DEPARTMENT OF TRANSPORTATION	TRAFFIC CONTROL DETAILS FOR FREEWAY SHOULDER CLOSURES AND PARTIAL RAMP CLOSURES			F.A. RTE.	SECTION	COUNTY	TOTAL SHEETS	SHEET NO.	
al\pwwork\pwwork\wjlgreendp\al125109\125109.dgn		DRAWN - D.W.S.	REVISED - 04-03		SCALE: NONE	SHEET NO. 1 OF 1 SHEETS	STA.	TO STA.	VAR. 2009-043 PP	COOK	10	10	
	PLOT SCALE = 1/8" = 1' IN.	CHECKED -	REVISED - J.A.F. 12-06						TC-17				
	PLOT DATE = 3/31/2009	DATE - 11-96	REVISED - S.P.B. 01-07										CONTRACT NO. 60655