

F.A.U. RTE.	SECTION	COUNTY	TOTAL SHEETS	SHEET NO.
297	1-G-RS-1	WILL	18	1
FED. ROAD DIST. NO.	ILLINOIS	CONTRACT NO. 60G94		

D-91-550-09

STATE OF ILLINOIS  
DEPARTMENT OF TRANSPORTATION  
DIVISION OF HIGHWAYS

**PROPOSED  
HIGHWAY PLANS**

OTHER ROUTE 297 (HOFF ROAD)  
IL ROUTE 53 TO OLD CHICAGO ROAD

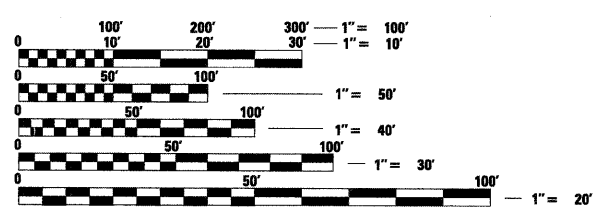
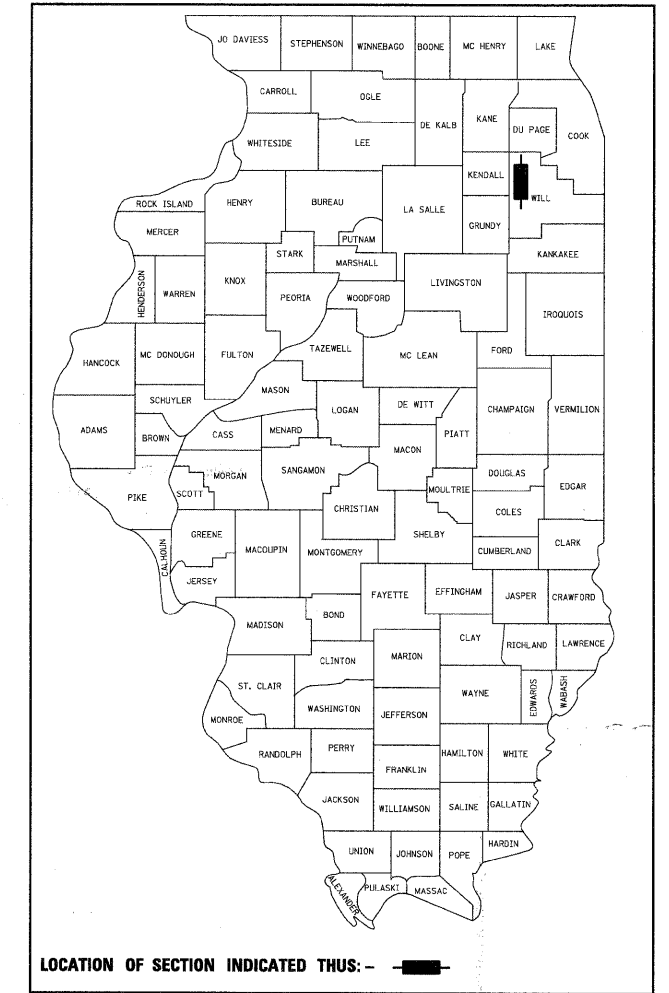
SECTION: 1-G-RS-1  
RESURFACING (3P)

WILL COUNTY  
C-91-550-09

IMPROVEMENT IS LOCATED  
IN THE VILLAGE OF ELMWOOD

FOR INDEX OF SHEETS, SEE SHEET NO. 2

ADT 5000 (2009)  
SPEED LIMIT 50 MPH

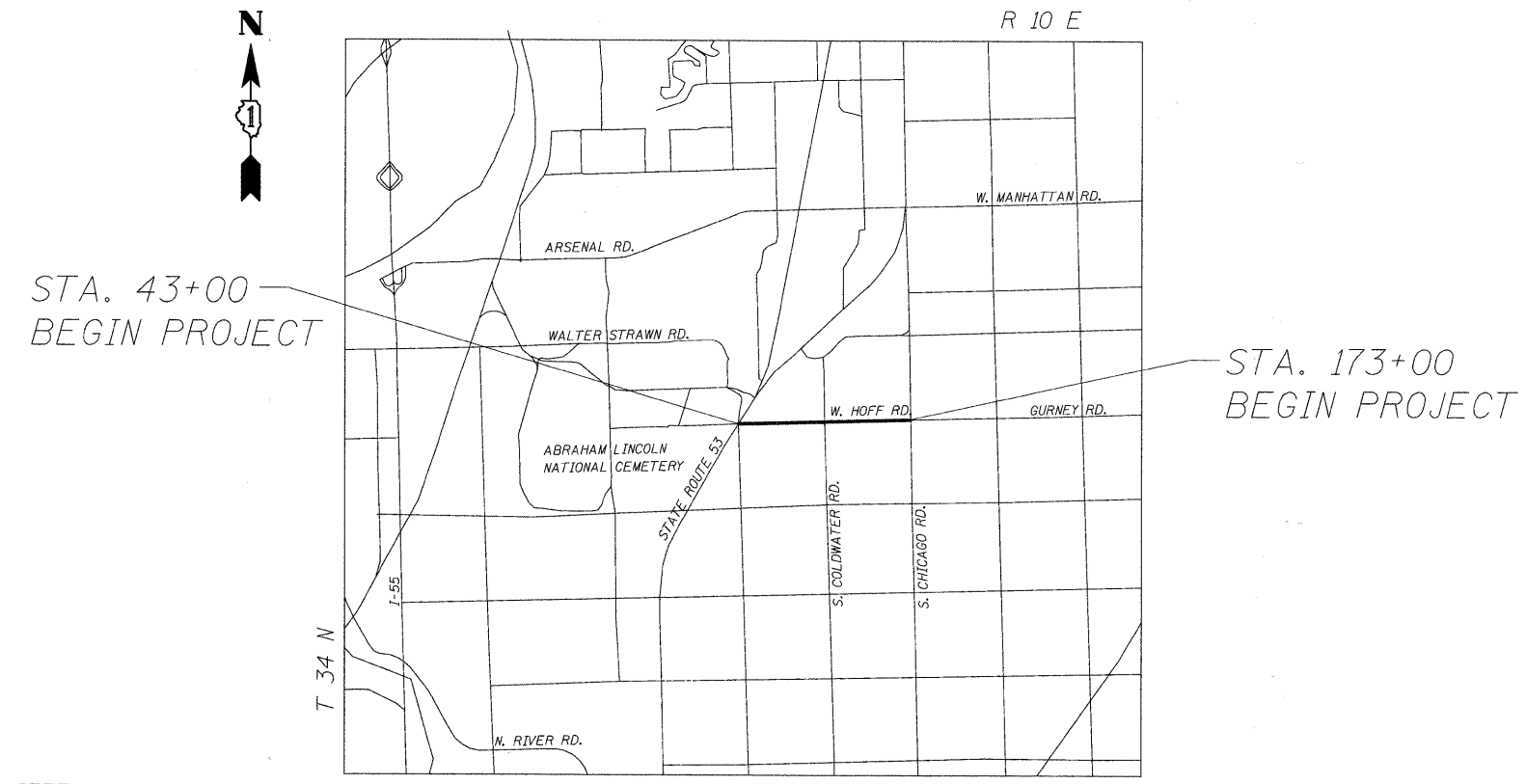


FULL SIZE PLANS HAVE BEEN PREPARED USING STANDARD ENGINEERING SCALES. REDUCED SIZED PLANS WILL NOT CONFORM TO STANDARD SCALES. IN MAKING MEASUREMENTS ON REDUCED PLANS, THE ABOVE SCALES MAY BE USED.

J.U.L.I.E.  
JOINT UTILITY LOCATION INFORMATION FOR EXCAVATION  
1-800-892-0123  
OR 811

PROJECT ENGINEER: REJENDRA C. SHAH (847) 705-4555  
PROJECT MANAGER: CATHERINE KIBBLE (847) 705-4269

CONTRACT NO. 60G94



LOCATION SKETCH

NET AND GROSS LENGTH OF PROJECT = 9,000' = 1.705 MI

STATE OF ILLINOIS  
DEPARTMENT OF TRANSPORTATION  
DIVISION OF HIGHWAYS

SUBMITTED APRIL 15, 2009

*Diana M. O'Keefe*  
DEPUTY DIRECTOR OF HIGHWAYS, REGION ENGINEER

May 1, 2009  
*Charles J. Ingersoll*  
ENGINEER OF DESIGN AND ENVIRONMENT

May 1, 2009  
*Christine M. Reed*  
DIRECTOR OF HIGHWAYS, CHIEF ENGINEER

PRINTED BY THE AUTHORITY  
OF THE STATE OF ILLINOIS

CONCO, INC.  
CONSULTING ENGINEERS  
1560 WALL ST, SUITE 222  
NAPERVILLE, ILLINOIS 60563 PH: (630) 577-9100

WILLIAM H. PETERSON  
062-047827  
REGISTERED  
PROFESSIONAL  
ENGINEER

*William H. Peterson*  
Expires 11-30-09