

F.A.U. RTE.	SECTION	COUNTY	TOTAL SHEETS	SHEET NO.
297	1-G-RS-1	WILL	18	1
FED. ROAD DIST. NO.	ILLINOIS	CONTRACT NO. 60G94		

D-91-550-09

STATE OF ILLINOIS  
DEPARTMENT OF TRANSPORTATION  
DIVISION OF HIGHWAYS

**PROPOSED  
HIGHWAY PLANS**

OTHER ROUTE 297 (HOFF ROAD)  
IL ROUTE 53 TO OLD CHICAGO ROAD

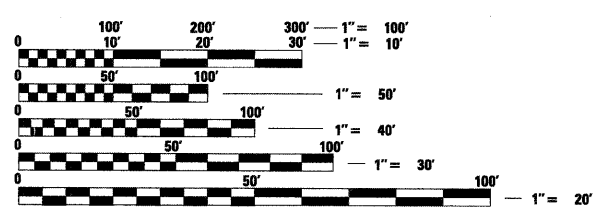
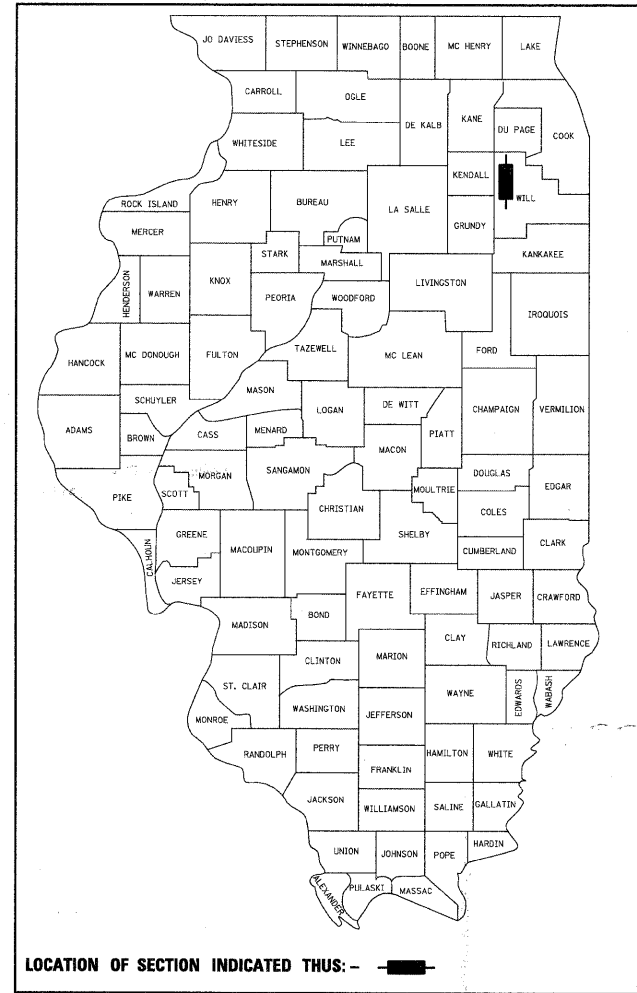
SECTION: 1-G-RS-1  
RESURFACING (3P)

WILL COUNTY  
C-91-550-09

IMPROVEMENT IS LOCATED  
IN THE VILLAGE OF ELMWOOD

FOR INDEX OF SHEETS, SEE SHEET NO. 2

ADT 5000 (2009)  
SPEED LIMIT 50 MPH

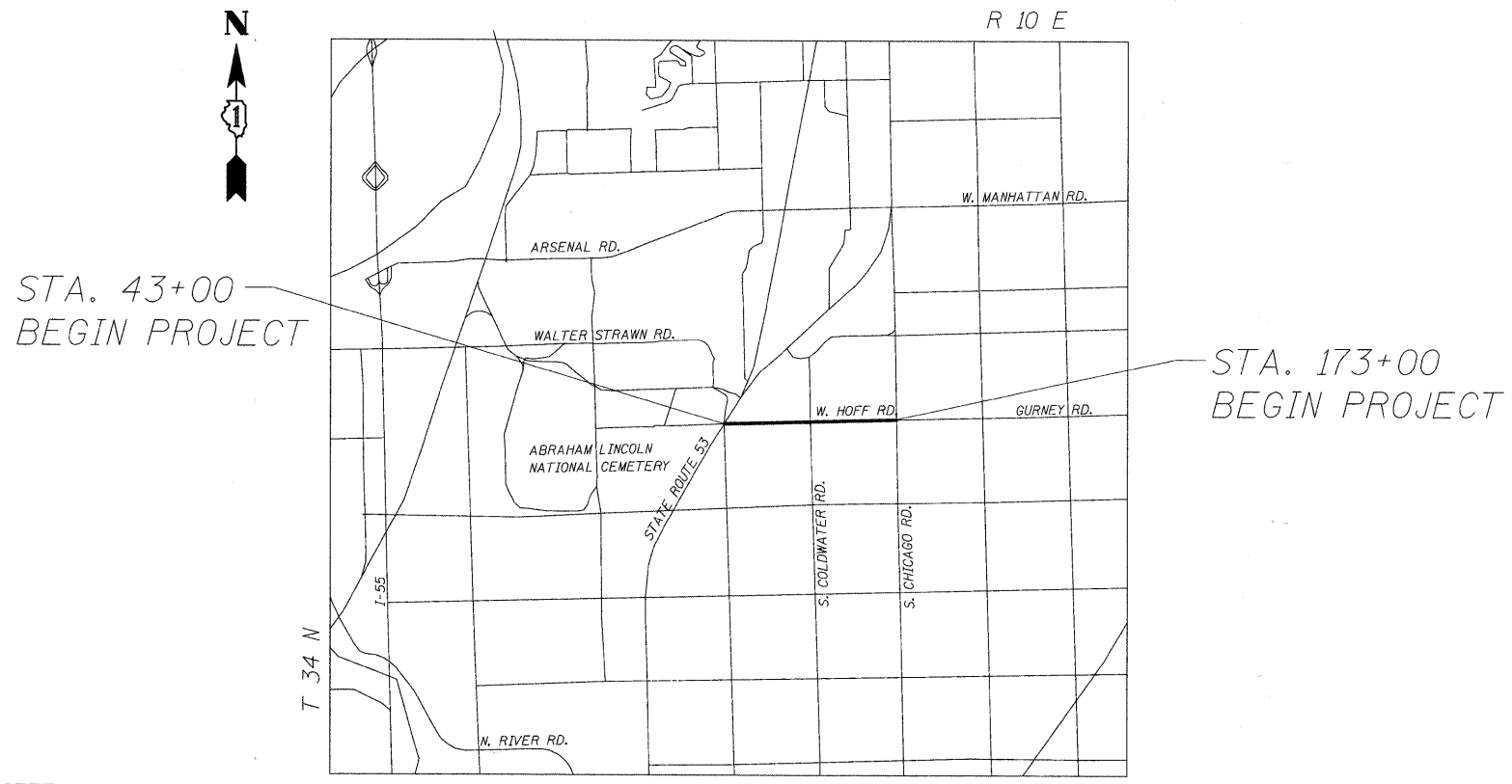


FULL SIZE PLANS HAVE BEEN PREPARED USING STANDARD ENGINEERING SCALES. REDUCED SIZED PLANS WILL NOT CONFORM TO STANDARD SCALES. IN MAKING MEASUREMENTS ON REDUCED PLANS, THE ABOVE SCALES MAY BE USED.

J.U.L.I.E.  
JOINT UTILITY LOCATION INFORMATION FOR EXCAVATION  
1-800-892-0123  
OR 811

PROJECT ENGINEER: REJENDRA C. SHAH (847) 705-4555  
PROJECT MANAGER: CATHERINE KIBBLE (847) 705-4269

CONTRACT NO. 60G94



LOCATION SKETCH

NET AND GROSS LENGTH OF PROJECT = 9,000' = 1.705 MI

STATE OF ILLINOIS  
DEPARTMENT OF TRANSPORTATION  
DIVISION OF HIGHWAYS

SUBMITTED APRIL 15, 2009

*Diana M. O'Keefe*  
DEPUTY DIRECTOR OF HIGHWAYS, REGION ENGINEER

May 1, 2009  
*Charles J. Ingersoll*  
ENGINEER OF DESIGN AND ENVIRONMENT

May 1, 2009  
*Christine M. Reed*  
DIRECTOR OF HIGHWAYS, CHIEF ENGINEER

PRINTED BY THE AUTHORITY  
OF THE STATE OF ILLINOIS

LONGO, INC.  
CONSULTING ENGINEERS  
1560 WALL ST, SUITE 222  
NAPERVILLE, ILLINOIS 60563 PH: (630) 577-9100

WILLIAM H. PETERSON  
062-047827  
REGISTERED  
PROFESSIONAL  
ENGINEER  
*WHP*  
Expires 11-30-09

INDEX OF SHEETS

STATE STANDARDS

PLAN NOTES

<u>SHEET NO.</u>	<u>DESCRIPTION</u>
1	TITLE SHEET
2	INDEX OF SHEETS, STATE STANDARDS, AND GENERAL NOTES
3	SUMMARY OF QUANTITIES
4	EXISTING AND PROPOSED TYPICAL SECTIONS
5-9	ROADWAY AND PAVEMENT MARKING PLANS
10	DETAILS FOR FRAMES AND LIDS ADJUSTMENT WITH MILLING
11	PAVEMENT PATCHING FOR HMA SURFACED PAVEMENT
12	BUTT JOINT AND HMA TAPER DETAILS
13	TRAFFIC CONTROL AND PROTECTION FOR SIDE ROADS, INTERSECTIONS, AND DRIVEWAYS
14	TYPICAL APPLICATIONS RAISED REFLECTIVE PAVEMENT MARKERS (SNOW-PLOW RESISTANT)
15	DISTRICT ONE TYPICAL PAVEMENT MARKINGS
16	TRAFFIC CONTROL AND PROTECTION AT TURN BAYS (TO REMAIN OPEN TO TRAFFIC)
17	PAVEMENT MARKING LETTERS AND SYMBOLS FOR TRAFFIC STAGING
18	ARTERIAL ROAD INFORMATION SIGN (TC-22)

<u>STANDARD NO.</u>	<u>DESCRIPTION</u>
000001-05	STANDARD SYMBOLS, ABBREVIATIONS AND PATTERNS
442201-03	CLASS C AND D PATCHES
701101-02	OFF-RD OPERATION, MULTILANE, 15' (4.5M) TO 24" (600 MM) FROM PAVEMENT EDGE
701201-03	LANE CLOSURE, 2L, 2W, DAY ONLY, FOR SPEEDS > 45 MPH
701306-02	LANE CLOSURE, 2L, 2W, SLOW MOVING OPERATIONS DAY ONLY FOR SPEEDS > 45 MPH.
701336-05	LANE CLOSURE, 2L, 2W, WORK AREAS IN SERIES FOR SPEEDS > 45 MPH.
701901-01	TRAFFIC CONTROL DEVICES

BEFORE STARTING ANY EXCAVATION, THE CONTRACTOR SHALL CALL "JULIE" AT 800-892-0123 FOR FIELD LOCATIONS OF BURIED ELECTRIC, TELEPHONE AND GAS FACILITIES. (48 HOUR NOTIFICATION IS REQUIRED)

THE CONTRACTOR SHALL COORDINATE CONSTRUCTION ACTIVITIES WITH UTILITY COMPANIES WITHIN THE VILLAGE OF ELWOOD.

THE CONTRACTOR WILL NOT BE ALLOWED TO SET UP A YARD OF FIELD OFFICE ON STATE PROPERTY WITHOUT WRITTEN PERMISSION FROM THE DEPARTMENT.

BUTT JOINTS WILL BE INSTALLED AT THE ENDS OF ALL RESURFACING (WHERE RESURFACING MEETS EXISTING PAVEMENT). IN ACCORDANCE WITH THE "BUTT JOINT AND HOT-MIX ASPHALT TAPER DETAILS" SHEETS INCLUDED ON THE PLANS. UNLESS OTHERWISE SPECIFIED.

THE RESIDENT ENGINEER SHALL CONTACT MS. PATRICE HARRIS AREA TRAFFIC FIELD ENGINEER AT (708) 597-9800 A MINIMUM OF 2 WEEKS PRIOR TO PLACEMENT OF PERMANENT PAVEMENT MARKING.

THE RESIDENT ENGINEER SHALL CONTACT THE DISTRICT ONE ARTERIAL TRAFFIC CONTROL SUPERVISOR AT (847) 705-4470 A MINIMUM OF 72 HOURS PRIOR TO START WORK.

10 FEET (3 METERS) TRANSITION SHALL BE USED TO MATCH PROPOSED CURB AND GUTTER TO EXISTING CURB AND GUTTERS IN THE FIELD. UNLESS OTHERWISE SHOWN, THE TRANSITION SHALL BE PAID FOR AT THE CONTRACT UNIT PRICE FOR THE PROPOSED ITEMS OR WORK SPECIFIED.

WHEN MILLED PAVEMENT IS OPEN TO TRAFFIC THE MAXIMUM GRADE DIFFERENTIAL BETWEEN PASSES OF THE MILLING MACHINE SHALL NOT EXCEED 1/2 INCHES (40MM) WHERE THE SPEED LIMIT IS 45 MPH (80 KM/H) OR LESS AND 1 INCH (25MM) WHERE THE SPEED LIMIT IS GREATER THAN 45 MPH (80 KM/H). WITH WRITTEN APPROVAL FROM THE ENGINEER, A MAXIMUM GRADE DIFFERENTIAL OF 3 INCHES (75MM) MAY BE ALLOWED IF THE EDGE OF THE MILLING IS SLOPED A MINIMUM 1:3 (V:H).

SUMMARY OF QUANTITIES				CONSTRUCTION TYPE CODE			SUMMARY OF QUANTITIES				CONSTRUCTION TYPE CODE		
CODE NO.	ITEM	UNIT	URBAN TOTAL QUANTITIES	1000 100% STATE		CODE NO.	ITEM	UNIT	URBAN TOTAL QUANTITIES	1000 100% STATE			
40600200	BITUMINOUS MATERIALS (PRIME COAT)	TON	15	15		70300280	TEMPORARY PAVEMENT MARKING - LINE 24"	FOOT	56	56			
40600300	AGGREGATE (PRIME COAT)	TON	72	72		70301000	WORK ZONE PAVEMENT MARKING REMOVAL	SQ FT	9766	9766			
40600400	MIXTURE FOR CRACKS, JOINTS, AND FLANGEWAYS	TON	11	11		* 78000200	THERMOPLASTIC PAVEMENT MARKING - LINE 4"	FOOT	28960	28960			
<del>40600635</del>	<del>LEVELING BINDER (MACHINE METHOD), N70</del>	<del>TON</del>	<del>1214</del>	<del>1214</del>		* 78000650	THERMOPLASTIC PAVEMENT MARKING - LINE 24"	FOOT	56	56			
40600895	CONSTRUCTING TEST STRIP	EACH	1	1		* 78100100	RAISED REFLECTIVE PAVEMENT MARKER	EACH	131	131			
40600982	HOT-MIX ASPHALT SURFACE REMOVAL - BUTT JOINT	SQ YD	1270	1270		78300200	RAISED REFLECTIVE PAVEMENT MARKER REMOVAL	EACH	131	131			
40601005	HOT-MIX ASPHALT REPLACEMENT OVER PATCHES	TON	77	77		X0322256	TEMPORARY INFORMATIONAL SIGNING	SQ FT	155	155			
40603340	HOT-MIX ASPHALT SURFACE COURSE, MIX "D", N70	TON	2912	2912		X0656100	DRIVEWAY PAVEMENT REMOVAL AND REPLACEMENT	SQ YD	25	25			
44000155	HOT-MIX ASPHALT SURFACE REMOVAL, 1 1/2"	SQ YD	2889	2889		<del>20018500</del>	<del>DRAINAGE STRUCTURES TO BE CLEANED</del>	<del>EACH</del>	<del>35</del>	<del>35</del>			
44000158	HOT-MIX ASPHALT SURFACE REMOVAL, 2 1/4"	SQ YD	31778	31778		X4067107	POLYMERIZED LEVELING BINDER (MACHINE METHOD) IL-4.75, N50	TON	1303	1303			
44002216	HOT-MIX ASPHALT REMOVAL OVER PATCHES, 4"	SQ YD	347	347		20201006	GRADING AND SHAPING SHOULDERS	UNIT	130	130			
44201761	CLASS D PATCHES, TYPE I, 10 INCH	SQ YD	4	4									
44201765	CLASS D PATCHES, TYPE II, 10 INCH	SQ YD	230	230									
44201769	CLASS D PATCHES, TYPE III, 10 INCH	SQ YD	17	17									
44201771	CLASS D PATCHES, TYPE IV, 10 INCH	SQ YD	100	100									
<del>55039700</del>	<del>STORM SEWERS TO BE CLEANED</del>	<del>FOOT</del>	<del>1300</del>	<del>1300</del>									
<del>60250200</del>	<del>CATCH BASINS TO BE ADJUSTED</del>	<del>EACH</del>	<del>25</del>	<del>25</del>									
<del>60255500</del>	<del>MANHOLES TO BE ADJUSTED</del>	<del>EACH</del>	<del>25</del>	<del>25</del>									
<del>60260100</del>	<del>INLETS TO BE ADJUSTED</del>	<del>EACH</del>	<del>25</del>	<del>25</del>									
<del>60300310</del>	<del>FRAMES AND LIDS TO BE ADJUSTED (SPECIAL)</del>	<del>EACH</del>	<del>65</del>	<del>65</del>									
67000400	ENGINEER'S FIELD OFFICE, TYPE A	CAL MO	5	5									
67100100	MOBILIZATION	L SUM	1	1									
70102620	TRAFFIC CONTROL AND PROTECTION, STANDARD 701501	L SUM	1	1									
70102635	TRAFFIC CONTROL AND PROTECTION, STANDARD 701701	L SUM	1	1									
70300100	SHORT - TERM PAVEMENT MARKING	FOOT	8705	8705									
70300220	TEMPORARY PAVEMENT MARKING - LINE 4"	FOOT	28960	28960									

\*Specialty Items

**LONGO, INC.**  
CONSULTING ENGINEERS  
1560 WALL ST, SUITE 222  
NAPERVILLE, ILLINOIS 60563 PH: (630) 577-9100

USER NAME - #USER*	DESIGNED - MJY	REVISED -
PLOT SCALE = #SCALE*	DRAWN - RJG & ST	REVISED -
PLOT DATE = #DATE*	CHECKED - MJY	REVISED -
	DATE - 04/15/2009	REVISED -

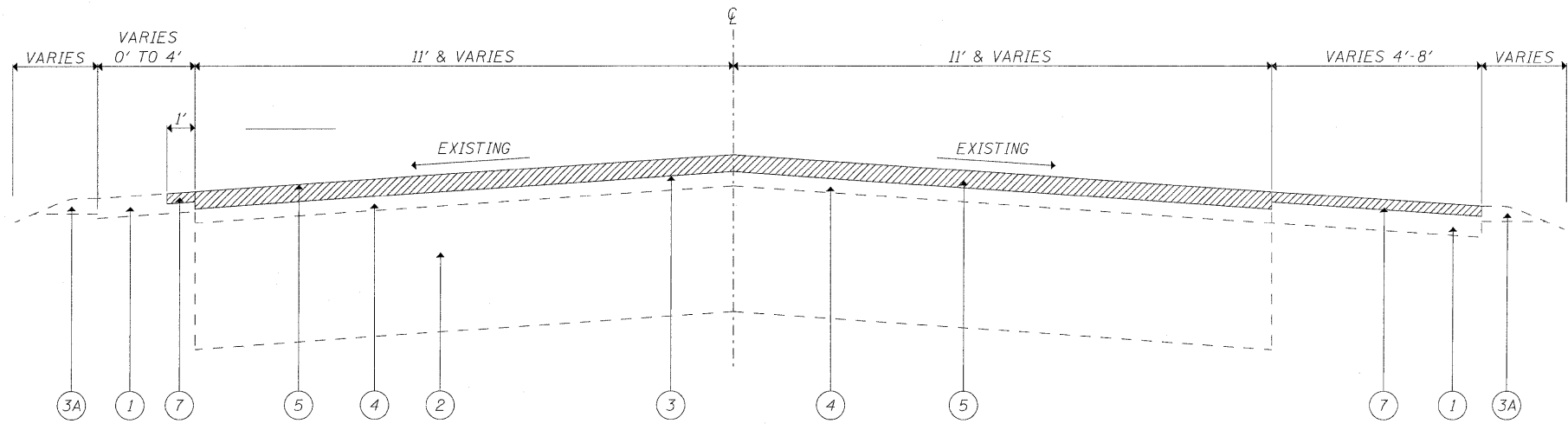
STATE OF ILLINOIS  
DEPARTMENT OF TRANSPORTATION

SUMMARY OF QUANTITIES  
W HOFF ROAD

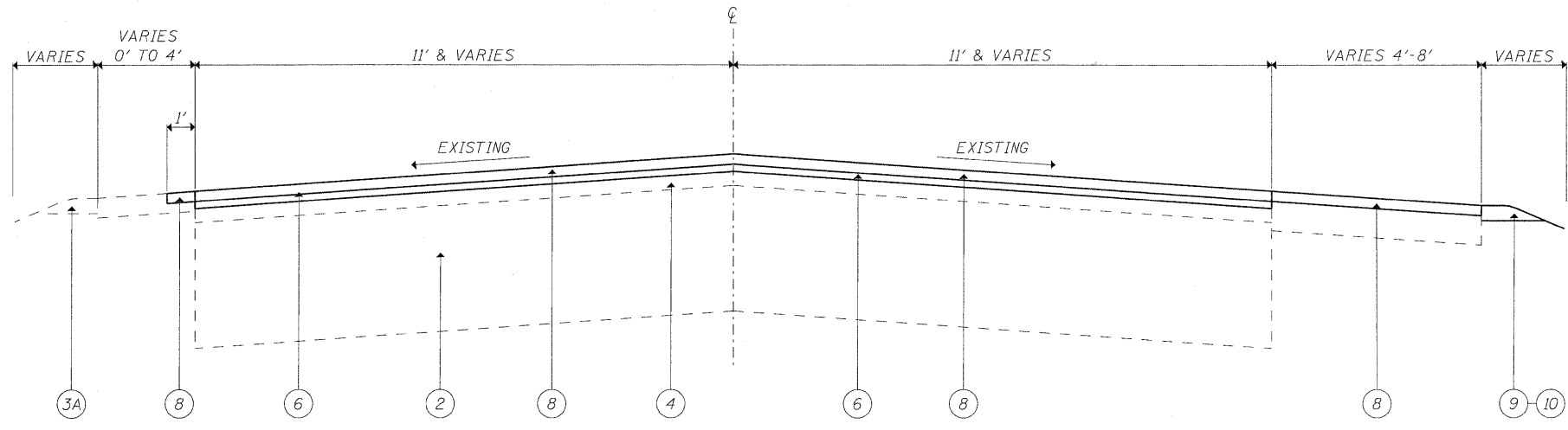
SCALE: NONE SHEET NO. 3 OF 18 SHEETS STA. 43+00 TO STA. 173+00

F.A.U. RTE.	SECTION	COUNTY	TOTAL SHEETS	SHEET NO.
297	1-G-RS-1	WILL	18	3
D-91-550-09			CONTRACT NO. 60694	
FED. ROAD DIST. NO.		ILLINOIS FED. AID PROJECT		

Rev.



EXISTING TYPICAL SECTION  
STA. 43+00 TO STA. 173+00



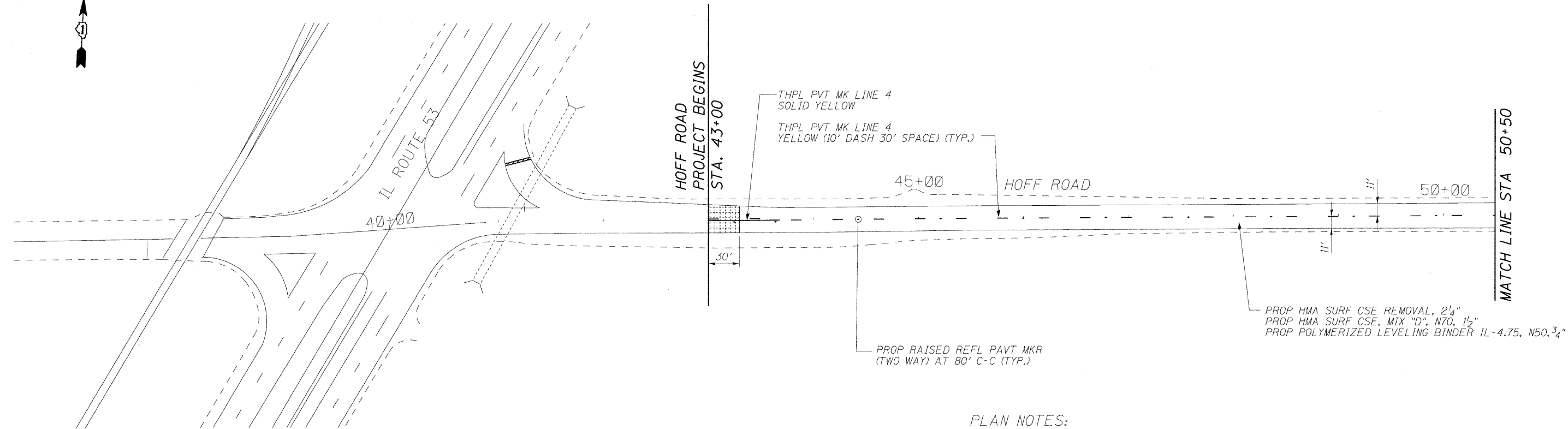
PROPOSED TYPICAL SECTION  
STA. 43+00 TO STA. 173+00

**LEGEND**

- ① EXISTING BITUMINOUS SHOULDER
- ② EXISTING P.C. CONCRETE PAVEMENT +/- 9"
- ③ EXISTING HMA SURFACE COURSE +/- 4"
- ③A EXISTING AGGREGATE SHOULDER
- ④ HMA MATERIAL AFTER MILLING, +/- 2"
- ⑤ PROPOSED HMA SURFACE REMOVAL (2 1/4")
- ⑥ PROPOSED POLYMERIZED LEVELING BINDER (MACHINE METHOD) IL-4.75, N50 (3/4")
- ⑦ PROPOSED HMA SURFACE REMOVAL (1 1/2")
- ⑧ PROPOSED HMA SURFACE COURSE, MIX "D", N70 (1 1/2")
- ⑨ PROPOSED AGGREGATE WEDGE SHOULDER
- ⑩ PROPOSED GRADING AND SHAPING SHOULDERS

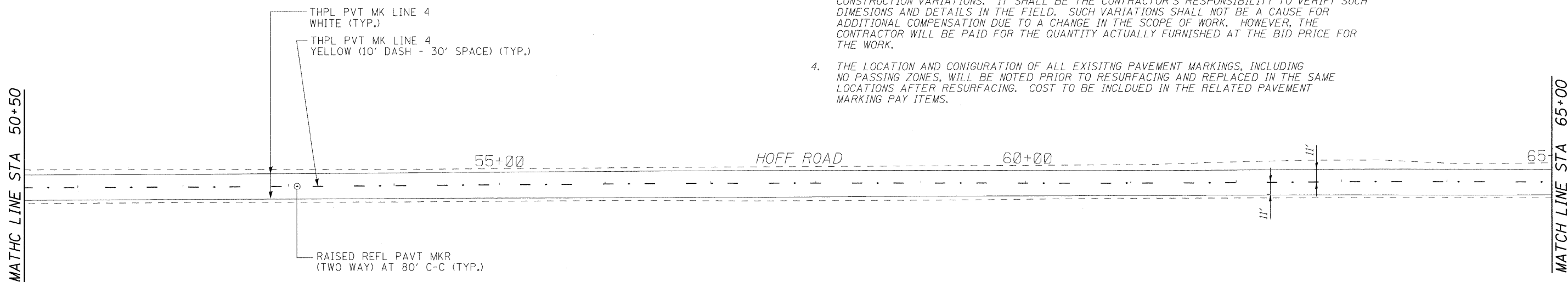
HOT-MIX ASPHALT MIXTURE REQUIREMENTS		
MIXTURE TYPE	AC/PG	DESIGN AIR VOIDS
HMA SURFACE COURSE, MIX D, N70. (IL -9.5 mm)	PG 64-22	4% @ 70 GYR
POLYMERIZED LEVELING BINDER (MACHINE METHOD). IL-4.75, N50	SBS-SBR PG 76-28/22	4% @ 50 GYR
CLASS D PATCHES (HMA BINDER IL 19 mm)	PG 64-22*	4% @ 70 GYR
HMA REPLACEMENT OVER PATCHES (HMA BINDER IL 19 mm)	PG 64-22*	4% @ 70 GYR
DRIVEWAY PAVEMENT REMOVAL AND REPLACEMENT	PG 64-22	4% @ 50 GYR

**NOTES:**  
 THE UNIT WEIGHT USED TO CALCULATE ALL HMA SURFACE COURSE MIXTURES IS 112 LSB/SQYD/IN.  
 \*WHEN RAP EXCEEDS 20%, THE NEW ASPHALT BINDER IN THE MIX SHALL BE PG 58-22  
 THE CONTRACTOR SHALL PATCH FIRST BEFORE MILLING  
 SHOULDER WIDENING GREATER THAN 4' AT VARIOUS LOCATIONS WITHIN THE LIMITS OF IMPROVEMENT

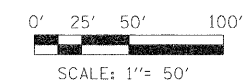


PLAN NOTES:

1. ALL PAVEMENT PATCHING AND DRIVEWAY REPLACEMENT LOCATIONS SHALL BE DETERMINED BY THE ENGINEER IN THE FIELD.
2. LOCATIONS FOR DRAINAGE STRUCTURE TO BE CLEANED AND APPURTENANCES TO BE ADJUSTED SHALL BE DETERMINED BY THE ENGINEER IN THE FIELD.
3. IN ADDITION TO FIELD REVIEW AND AERIAL DATA, PLAN DIMENSIONS AND DETAILS RELATIVE TO THE EXISTING FACILITIES HAVE BEEN TAKEN FROM EXISTING PLANS AND ARE SUBJECT TO CONSTRUCTION VARIATIONS. IT SHALL BE THE CONTRACTOR'S RESPONSIBILITY TO VERIFY SUCH DIMENSIONS AND DETAILS IN THE FIELD. SUCH VARIATIONS SHALL NOT BE A CAUSE FOR ADDITIONAL COMPENSATION DUE TO A CHANGE IN THE SCOPE OF WORK. HOWEVER, THE CONTRACTOR WILL BE PAID FOR THE QUANTITY ACTUALLY FURNISHED AT THE BID PRICE FOR THE WORK.
4. THE LOCATION AND CONFIGURATION OF ALL EXISTING PAVEMENT MARKINGS, INCLUDING NO PASSING ZONES, WILL BE NOTED PRIOR TO RESURFACING AND REPLACED IN THE SAME LOCATIONS AFTER RESURFACING. COST TO BE INCLUDED IN THE RELATED PAVEMENT MARKING PAY ITEMS.



LEGEND



**LONGO INC.**  
CONSULTING ENGINEERS  
1560 WALL STREET  
NAPERVILLE, ILLINOIS 60563 PH: (630) 577-9100

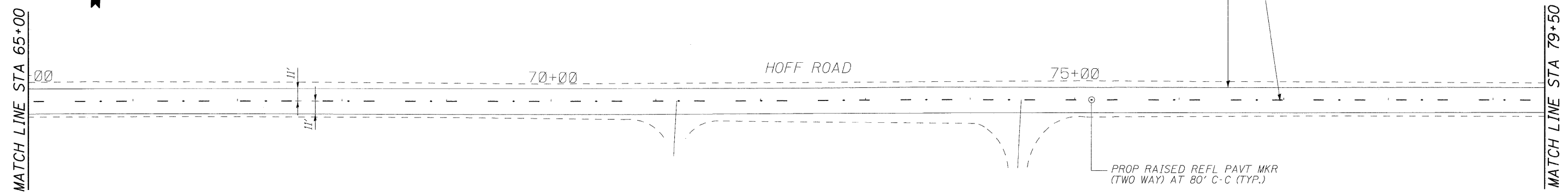
USER NAME = #USER#	DESIGNED - MJY	REVISED -
	DRAWN - ZDA & ST	REVISED -
PLOT SCALE = #SCALE#	CHECKED - MJY	REVISED -
PLOT DATE = #DATE#	DATE - 04/15/2009	REVISED -

**STATE OF ILLINOIS  
DEPARTMENT OF TRANSPORTATION**

**PAVING & PAVEMENT MARKING PLAN  
W HOFF ROAD**

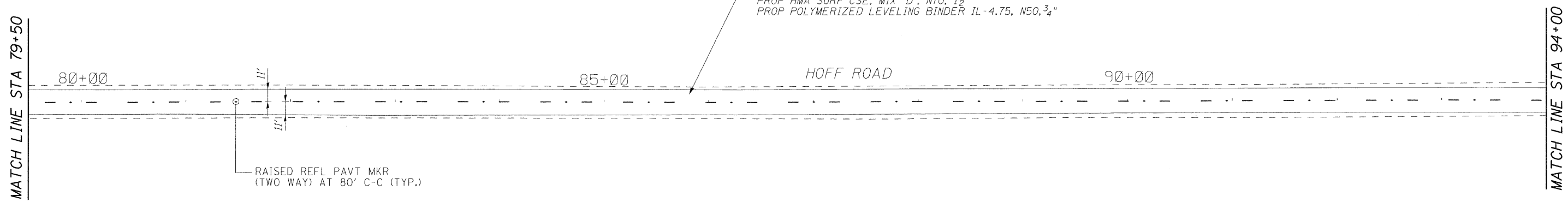
SCALE: 1" = 50' SHEET NO. 5 OF 18 SHEETS STA. 43+00 TO STA. 65+00

OR RTE.	SECTION	COUNTY	TOTAL SHEETS	SHEET NO.
297	1-G-RS-1	WILL	18	5
D-91-550-09		CONTRACT NO. 60G94		
FED. ROAD DIST. NO.		ILLINOIS FED. AID PROJECT		

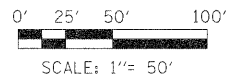


PLAN NOTES:

1. ALL PAVEMENT PATCHING AND DRIVEWAY REPLACEMENT LOCATIONS SHALL BE DETERMINED BY THE ENGINEER IN THE FIELD.
2. LOCATIONS FOR DRAINAGE STRUCTURE TO BE CLEANED AND APPURTENANCES TO BE ADJUSTED SHALL BE DETERMINED BY THE ENGINEER IN THE FIELD.
3. IN ADDITION TO FIELD REVIEW AND AERIAL DATA, PLAN DIMENSIONS AND DETAILS RELATIVE TO THE EXISTING FACILITIES HAVE BEEN TAKEN FROM EXISTING PLANS AND ARE SUBJECT TO CONSTRUCTION VARIATIONS. IT SHALL BE THE CONTRACTOR'S RESPONSIBILITY TO VERIFY SUCH DIMENSIONS AND DETAILS IN THE FIELD. SUCH VARIATIONS SHALL NOT BE A CAUSE FOR ADDITIONAL COMPENSATION DUE TO A CHANGE IN THE SCOPE OF WORK. HOWEVER, THE CONTRACTOR WILL BE PAID FOR THE QUANTITY ACTUALLY FURNISHED AT THE BID PRICE FOR THE WORK.
4. THE LOCATION AND CONFIGURATION OF ALL EXISTING PAVEMENT MARKINGS, INCLUDING NO PASSING ZONES, WILL BE NOTED PRIOR TO RESURFACING AND REPLACED IN THE SAME LOCATIONS AFTER RESURFACING. COST TO BE INCLUDED IN THE RELATED PAVEMENT MARKING PAY ITEMS.



LEGEND



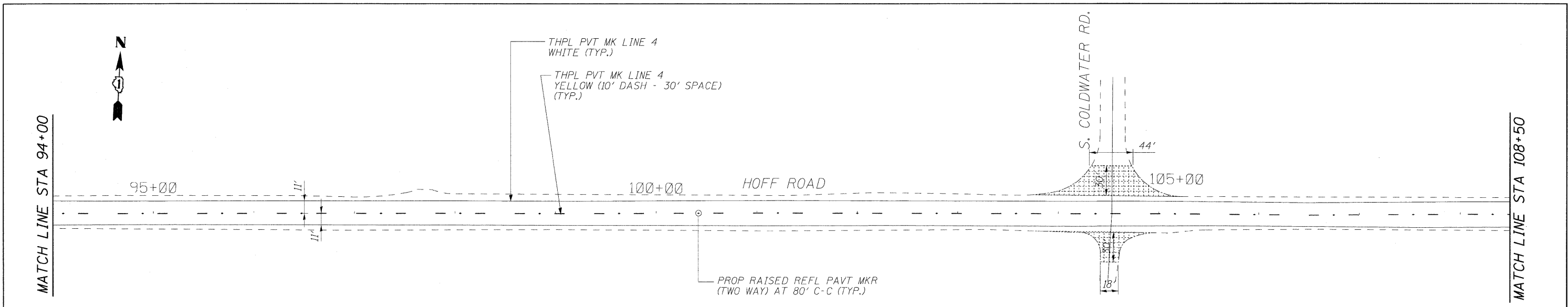
**LONCO, INC.**  
CONSULTING ENGINEERS  
1560 WALL STREET  
NAPERVILLE, ILLINOIS 60563 PH: 630/577-9100

USER NAME = #USER#	DESIGNED - MJY	REVISED -
	DRAWN - ZDA & ST	REVISED -
PLOT SCALE = #SCALE#	CHECKED - MJY	REVISED -
PLOT DATE = #DATE#	DATE - 04/15/2009	REVISED -

**STATE OF ILLINOIS  
DEPARTMENT OF TRANSPORTATION**

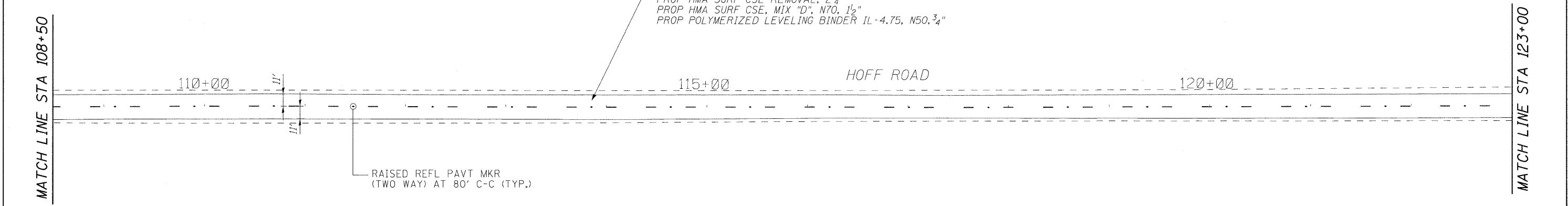
<b>PAVING &amp; PAVEMENT MARKING PLAN W HOFF ROAD</b>		
SCALE: 1" = 50'	SHEET NO. 6 OF 18 SHEETS	STA. 65+00 TO STA. 94+00

OR RTE. 297	SECTION 1-G-RS-1	COUNTY WILL	TOTAL SHEETS 18	SHEET NO. 6
D-91-550-09			CONTRACT NO. 60G94	
FED. ROAD DIST. NO. [ILLINOIS] FED. AID PROJECT				

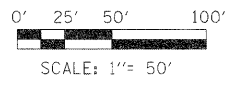


PLAN NOTES:

1. ALL PAVEMENT PATCHING AND DRIVEWAY REPLACEMENT LOCATIONS SHALL BE DETERMINED BY THE ENGINEER IN THE FIELD.
2. LOCATIONS FOR DRAINAGE STRUCTURE TO BE CLEANED AND APPURTENANCES TO BE ADJUSTED SHALL BE DETERMINED BY THE ENGINEER IN THE FIELD.
3. IN ADDITION TO FIELD REVIEW AND AERIAL DATA, PLAN DIMENSIONS AND DETAILS RELATIVE TO THE EXISTING FACILITIES HAVE BEEN TAKEN FROM EXISTING PLANS AND ARE SUBJECT TO CONSTRUCTION VARIATIONS. IT SHALL BE THE CONTRACTOR'S RESPONSIBILITY TO VERIFY SUCH DIMENSIONS AND DETAILS IN THE FIELD. SUCH VARIATIONS SHALL NOT BE A CAUSE FOR ADDITIONAL COMPENSATION DUE TO A CHANGE IN THE SCOPE OF WORK. HOWEVER, THE CONTRACTOR WILL BE PAID FOR THE QUANTITY ACTUALLY FURNISHED AT THE BID PRICE FOR THE WORK.
4. THE LOCATION AND CONFIGURATION OF ALL EXISTING PAVEMENT MARKINGS, INCLUDING NO PASSING ZONES, WILL BE NOTED PRIOR TO RESURFACING AND REPLACED IN THE SAME LOCATIONS AFTER RESURFACING. COST TO BE INCLUDED IN THE RELATED PAVEMENT MARKING PAY ITEMS.



LEGEND



**LONCO, INC.**  
CONSULTING ENGINEERS  
1560 WALL STREET  
NAPERVILLE, ILLINOIS 60563 PH: 630/577-9100

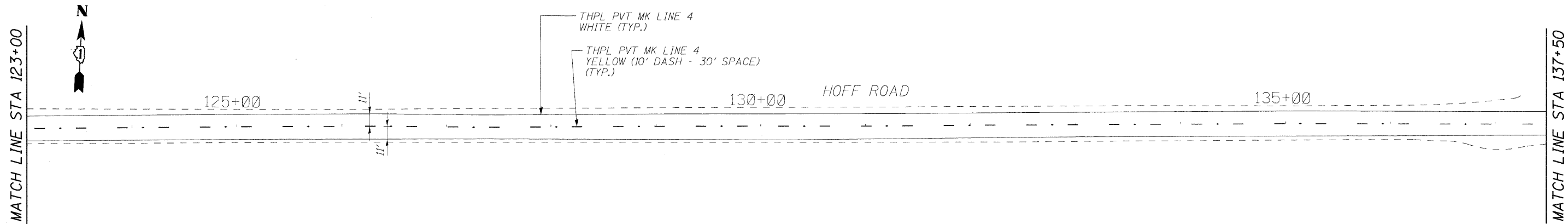
USER NAME = #USER#	DESIGNED - MJY	REVISED -
	DRAWN - ZDA & ST	REVISED -
PLOT SCALE = #SCALE#	CHECKED - MJY	REVISED -
PLOT DATE = #DATE#	DATE - 04/15/2009	REVISED -

**STATE OF ILLINOIS  
DEPARTMENT OF TRANSPORTATION**

**PAVING & PAVEMENT MARKING PLAN  
W HOFF ROAD**

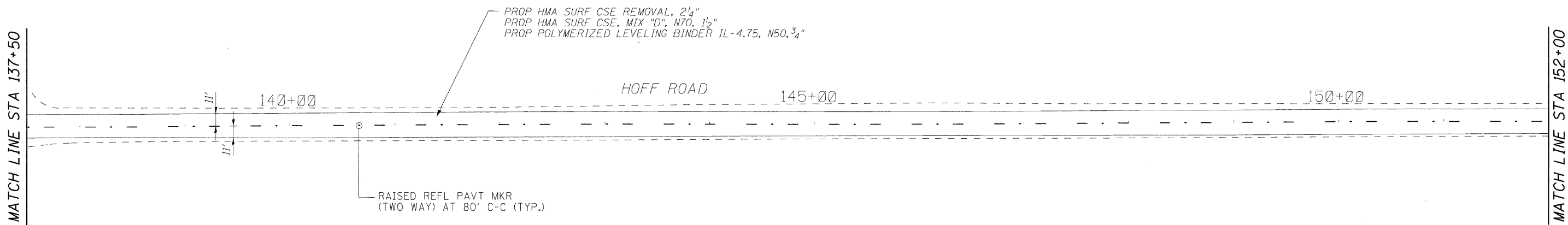
SCALE: 1" = 50' SHEET NO. 7 OF 18 SHEETS STA. 94+00 TO STA. 123+00

OR RTE.	SECTION	COUNTY	TOTAL SHEETS	SHEET NO.
297	1-G-RS-1	WILL	18	7
D-91-550-09		CONTRACT NO. 60G94		
FED. ROAD DIST. NO.		ILLINOIS FED. AID PROJECT		

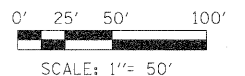


PLAN NOTES:

1. ALL PAVEMENT PATCHING AND DRIVEWAY REPLACEMENT LOCATIONS SHALL BE DETERMINED BY THE ENGINEER IN THE FIELD.
2. LOCATIONS FOR DRAINAGE STRUCTURE TO BE CLEANED AND APPURTENANCES TO BE ADJUSTED SHALL BE DETERMINED BY THE ENGINEER IN THE FIELD.
3. IN ADDITION TO FIELD REVIEW AND AERIAL DATA, PLAN DIMENSIONS AND DETAILS RELATIVE TO THE EXISTING FACILITIES HAVE BEEN TAKEN FROM EXISTING PLANS AND ARE SUBJECT TO CONSTRUCTION VARIATIONS. IT SHALL BE THE CONTRACTOR'S RESPONSIBILITY TO VERIFY SUCH DIMENSIONS AND DETAILS IN THE FIELD. SUCH VARIATIONS SHALL NOT BE A CAUSE FOR ADDITIONAL COMPENSATION DUE TO A CHANGE IN THE SCOPE OF WORK. HOWEVER, THE CONTRACTOR WILL BE PAID FOR THE QUANTITY ACTUALLY FURNISHED AT THE BID PRICE FOR THE WORK.
4. THE LOCATION AND CONFIGURATION OF ALL EXISTING PAVEMENT MARKINGS, INCLUDING NO PASSING ZONES, WILL BE NOTED PRIOR TO RESURFACING AND REPLACED IN THE SAME LOCATIONS AFTER RESURFACING. COST TO BE INCLUDED IN THE RELATED PAVEMENT MARKING PAY ITEMS.



LEGEND



**LONCO, INC.**  
CONSULTING ENGINEERS  
1560 WALL STREET  
NAPERVILLE, ILLINOIS 60563 PH 630/577-9100

USER NAME = \$USER*	DESIGNED - MJY	REVISED -
	DRAWN - ZDA & ST	REVISED -
PLOT SCALE = \$SCALE*	CHECKED - MJY	REVISED -
PLOT DATE = \$DATE*	DATE - 04/15/2009	REVISED -

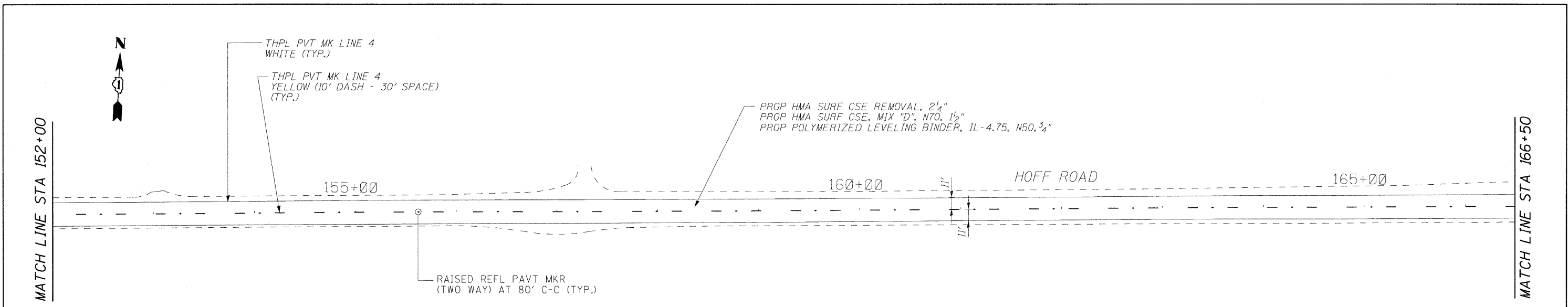
**STATE OF ILLINOIS  
DEPARTMENT OF TRANSPORTATION**

**PAVING & PAVEMENT MARKING PLAN  
W HOFF ROAD**

SCALE: 1" = 50' SHEET NO. 8 OF 18 SHEETS STA. 123+00 TO STA. 152+00

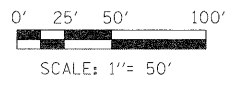
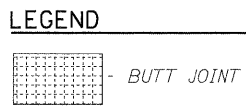
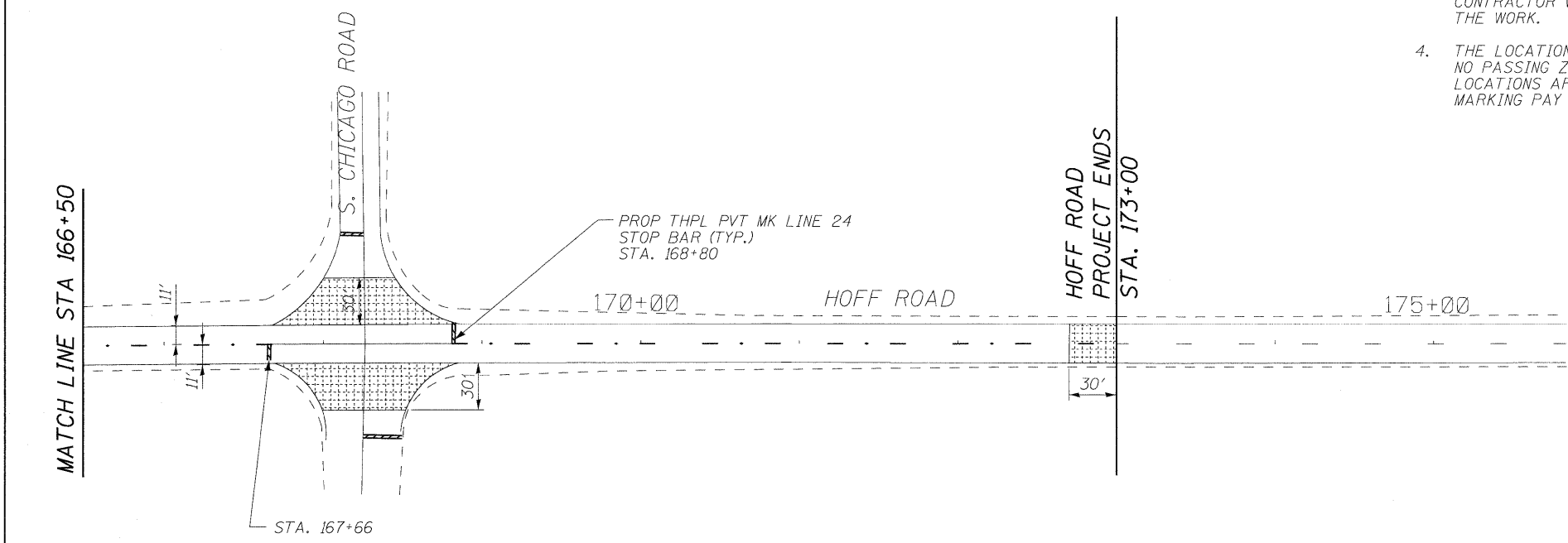
OR RTE.	SECTION	COUNTY	TOTAL SHEETS	SHEET NO.
297	1-G-RS-1	WILL	18	8
D-91-550-09		CONTRACT NO. 60G94		
FED. ROAD DIST. NO.		ILLINOIS FED. AID PROJECT		





PLAN NOTES:

1. ALL PAVEMENT PATCHING AND DRIVEWAY REPLACEMENT LOCATIONS SHALL BE DETERMINED BY THE ENGINEER IN THE FIELD.
2. LOCATIONS FOR DRAINAGE STRUCTURE TO BE CLEANED AND APPURTENANCES TO BE ADJUSTED SHALL BE DETERMINED BY THE ENGINEER IN THE FIELD.
3. IN ADDITION TO FIELD REVIEW AND AERIAL DATA, PLAN DIMENSIONS AND DETAILS RELATIVE TO THE EXISTING FACILITIES HAVE BEEN TAKEN FROM EXISTING PLANS AND ARE SUBJECT TO CONSTRUCTION VARIATIONS. IT SHALL BE THE CONTRACTOR'S RESPONSIBILITY TO VERIFY SUCH DIMENSIONS AND DETAILS IN THE FIELD. SUCH VARIATIONS SHALL NOT BE A CAUSE FOR ADDITIONAL COMPENSATION DUE TO A CHANGE IN THE SCOPE OF WORK. HOWEVER, THE CONTRACTOR WILL BE PAID FOR THE QUANTITY ACTUALLY FURNISHED AT THE BID PRICE FOR THE WORK.
4. THE LOCATION AND CONFIGURATION OF ALL EXISTING PAVEMENT MARKINGS, INCLUDING NO PASSING ZONES, WILL BE NOTED PRIOR TO RESURFACING AND REPLACED IN THE SAME LOCATIONS AFTER RESURFACING. COST TO BE INCLUDED IN THE RELATED PAVEMENT MARKING PAY ITEMS.



**LONCO, INC.**  
 CONSULTING ENGINEERS  
 1560 WALL STREET  
 NAPERVILLE, ILLINOIS 60563 Ph: (630) 577-9100

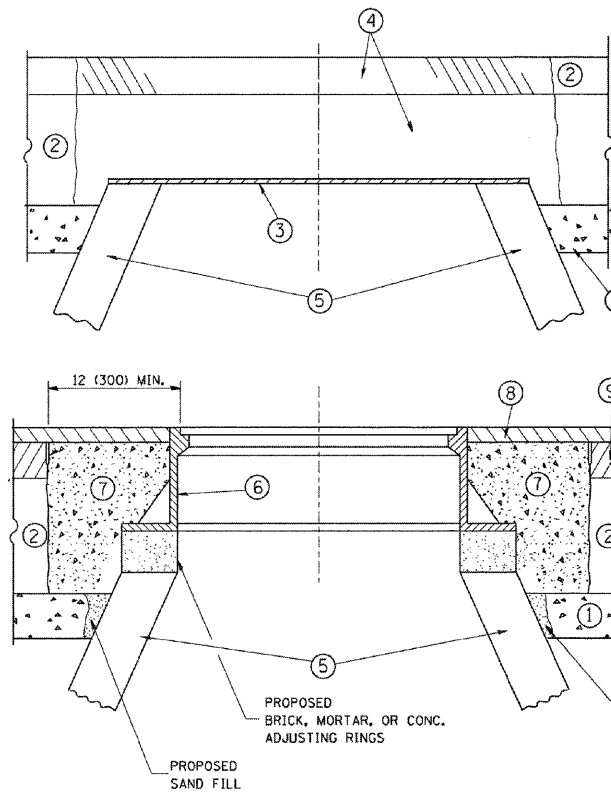
USER NAME = #USER#	DESIGNED - MJY	REVISED -
	DRAWN - ZDA & ST	REVISED -
PLOT SCALE = #SCALE#	CHECKED - MJY	REVISED -
PLOT DATE = #DATE#	DATE - 04/15/2009	REVISED -

**STATE OF ILLINOIS  
 DEPARTMENT OF TRANSPORTATION**

**PAVING & PAVEMENT MARKING PLAN  
 W HOFF ROAD**

SCALE: 1" = 50'    SHEET NO. 9 OF 18 SHEETS    STA. 152+00 TO STA. 173+00

OR RTE.	SECTION	COUNTY	TOTAL SHEETS	SHEET NO.
297	1-G-RS-1	WILL	18	9
D-91-550-09		CONTRACT NO. 60G94		
FED. ROAD DIST. NO.		ILLINOIS FED. AID PROJECT		



**CONSTRUCTION PROCEDURES**

**STAGE 1 (BEFORE PAVEMENT MILLING)**

- A) REMOVE A MINIMUM OF 12 (300) OF THE PAVEMENT FROM AROUND THE STRUCTURE.
- B) REMOVE THE EXISTING FRAME AND LID FROM THE STRUCTURE.
- C) COVER THE STRUCTURE OPENING WITH A 36 (900) DIAMETER METAL PLATE.
- D) BACKFILL WITH CRUSHED STONE AND A MINIMUM 1 1/2 (40) THICK HMA SURFACE MIX APPROVED BY THE ENGINEER.

**STAGE 2 (AFTER PAVEMENT MILLING)**

- A) REMOVE THE HMA SURFACE MIX AND CRUSHED STONE.
- B) INSTALL THE FRAME AND LID; ADJUST THE FRAME TO ITS FINAL SURFACE ELEVATION.
- C) THE SURROUNDING SPACE SHALL BE FILLED WITH CLASS SI CONCRETE, OR HMA SURFACE COURSE OR HMA BINDER COURSE TO THE ELEVATION OF THE SURFACE OF THE EXISTING BASE COURSE OR THE BINDER COURSE.

THE PROCEDURE EXPLAINED ABOVE SHALL CONFORM TO THE APPLICABLE PORTIONS OF SECTIONS 353, 406, 602, AND 603 OF THE STANDARD SPECIFICATIONS.

**LEGEND**

- ① SUB-BASE GRANULAR MATERIAL
- ② EXISTING PAVEMENT
- ③ 36 (900) DIAMETER METAL PLATE
- ④ PROPOSED CRUSHED STONE AND HMA SURFACE MIX
- ⑤ EXISTING STRUCTURE
- ⑥ FRAME AND LID (SEE NOTES)
- ⑦ CLASS SI CONCRETE, HMA SURFACE COURSE OR HMA BINDER COURSE
- ⑧ PROPOSED HMA SURFACE COURSE
- ⑨ PROPOSED HMA BINDER COURSE

**NOTES:**

EXISTING BROKEN FRAMES AND LIDS SHALL BE REMOVED AND DISPOSED OF BY THE CONTRACTOR AND SHALL BE REPLACED AS DIRECTED BY THE ENGINEER. REPLACEMENT FRAMES AND LIDS WILL BE PAID FOR IN ACCORDANCE WITH ARTICLE 109.04 OF THE STANDARD SPECIFICATIONS UNLESS A SEPARATE PAY ITEM HAS BEEN PROVIDED.

IF THE EXISTING LIDS ARE OPEN, THE FRAME WILL BE ADJUSTED TO THE ELEVATION OF THE MILLED PAVEMENT SURFACE PRIOR TO THE MILLING OPERATION. THE FRAME WILL NOT BE REMOVED AND COVERED BY THE METAL PLATE.

CITY OF CHICAGO CASTINGS ARE THE PROPERTY OF THE CITY AND THE CONTRACTOR SHALL NOTIFY THE CITY FOR REMOVAL AND DISPOSITION OF THE CASTINGS.

THE METAL PLATE USED TO COVER THE STRUCTURE SHALL REMAIN THE PROPERTY OF THE CONTRACTOR.

WHEN STRUCTURES ARE TO BE ADJUSTED OR RECONSTRUCTED, THE LOWERING AND RAISING OF THE FRAMES AND LIDS WILL NOT BE PAID FOR SEPARATELY BUT WILL BE INCLUDED IN THE COST OF THE CORRESPONDING PAY ITEM.

**LOCATION OF STRUCTURES:**

THE CONTRACTOR WILL BE REQUIRED TO KEEP A RECORD OF THE LOCATIONS OF THE BURIED STRUCTURES ACCORDING TO THE STATION AND DISTANCE LEFT OR RIGHT OF THE CENTERLINE OF PAVEMENT. UPON COMPLETION OF THE WORK, THE CONTRACTOR WILL DELIVER THE RECORD TO THE ENGINEER.

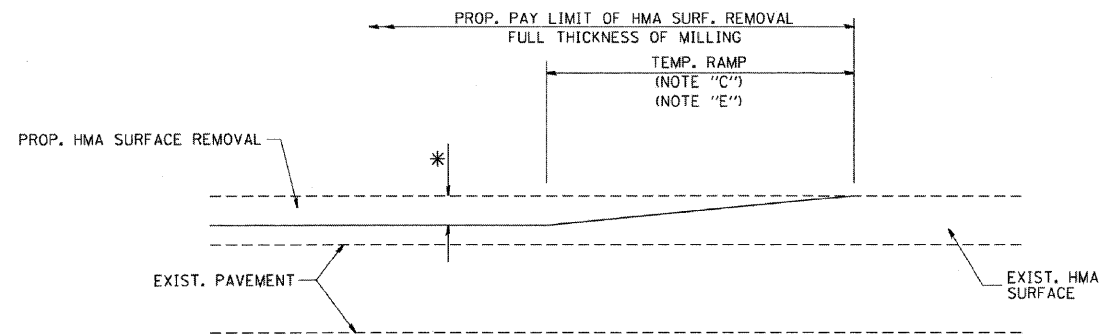
**BASIS OF PAYMENT:** THIS WORK WILL BE PAID FOR AT THE CONTRACT UNIT PRICE PER EACH FOR "FRAMES AND LIDS TO BE ADJUSTED, SPECIAL"  
NEW FRAMES AND LIDS, WHEN SPECIFIED, WILL BE PAID FOR SEPARATELY.

ALL DIMENSIONS ARE IN INCHES (MILLIMETERS) UNLESS OTHERWISE SHOWN

**DETAILS FOR FRAMES AND LIDS ADJUSTMENT WITH MILLING**

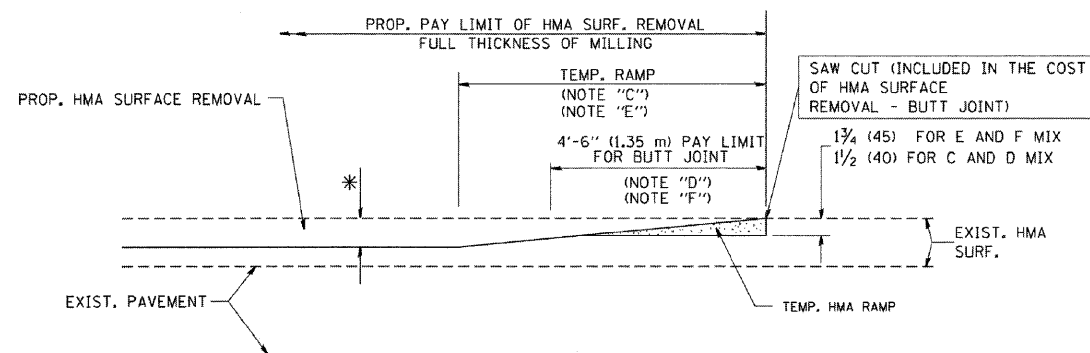
	USER NAME = #USER#	DESIGNED - MJY		<b>STATE OF ILLINOIS DEPARTMENT OF TRANSPORTATION</b>	<b>DISTRICT ONE DETAIL SHEETS W HOFF ROAD</b>			OR RTE.	SECTION	COUNTY	TOTAL SHEETS	SHEET NO.
		DRAWN - ST	REVISED -		297	1-G-RS-1	WILL	18	10			
	PLOT SCALE = #SCALE#	CHECKED - MJY	REVISED -		D-91-550-09			CONTRACT NO. 60G94				
	PLOT DATE = #DATE#	DATE - 04/15/2009	REVISED -		SCALE: NONE	SHEET NO. 10 OF 18 SHEETS	STA. 43+00 TO STA. 173+00	FED. ROAD DIST. NO. [ILLINOIS] FED. AID PROJECT				





MILLED TEMPORARY RAMP  
(FOR BUTT JOINT AND HMA TAPER SEE DETAIL BELOW)

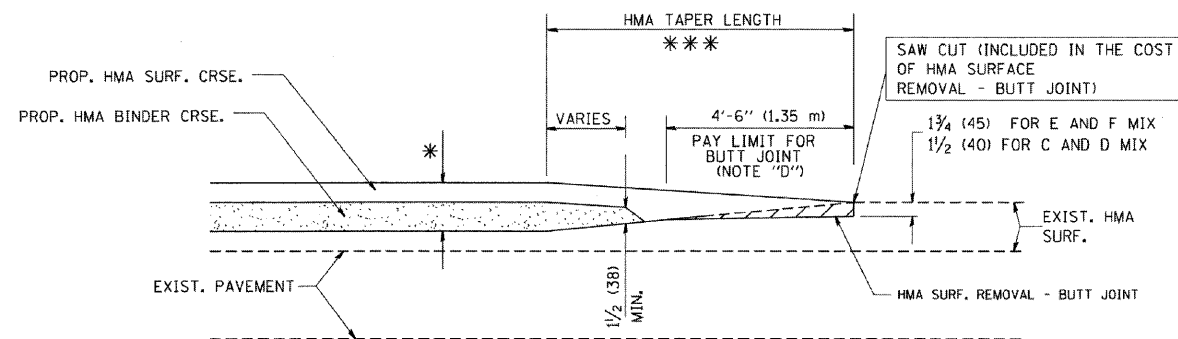
**OPTION 1**



HMA CONSTRUCTED TEMPORARY RAMP  
(FOR BUTT JOINT AND HMA TAPER SEE DETAIL BELOW)

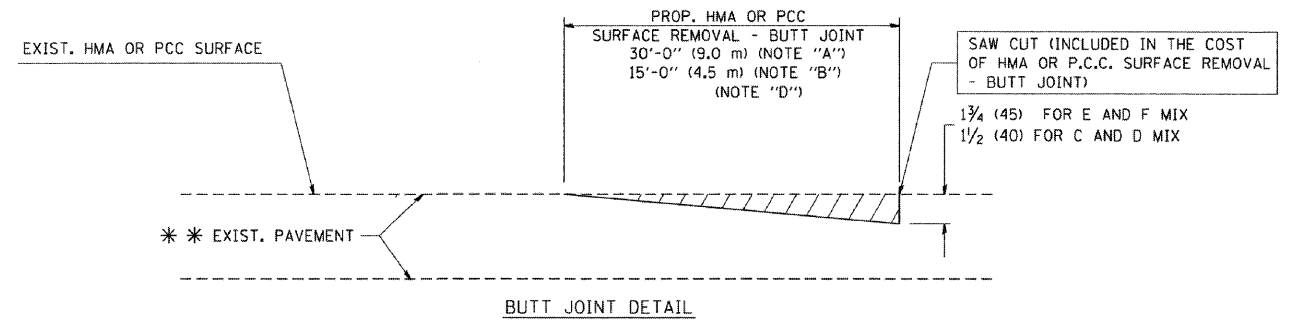
**OPTION 2**

**TYPICAL TEMPORARY RAMP**

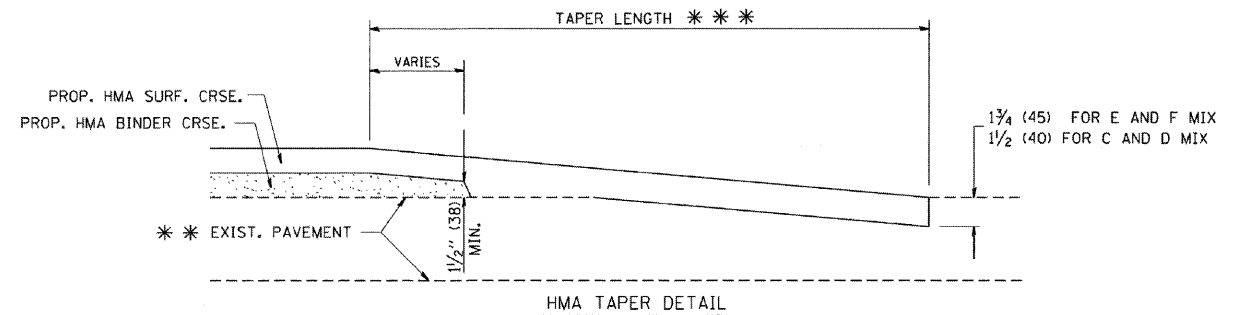


BUTT JOINT AND  
HMA TAPER

**TYPICAL BUTT JOINT AND HMA TAPER  
FOR MILLING AND RESURFACING**



BUTT JOINT DETAIL



HMA TAPER DETAIL

**TYPICAL BUTT JOINT AND HMA TAPER  
FOR RESURFACING ONLY**

\*\*\* PC CONCRETE, HMA OR HMA RESURFACED PAVEMENT.

**NOTES**

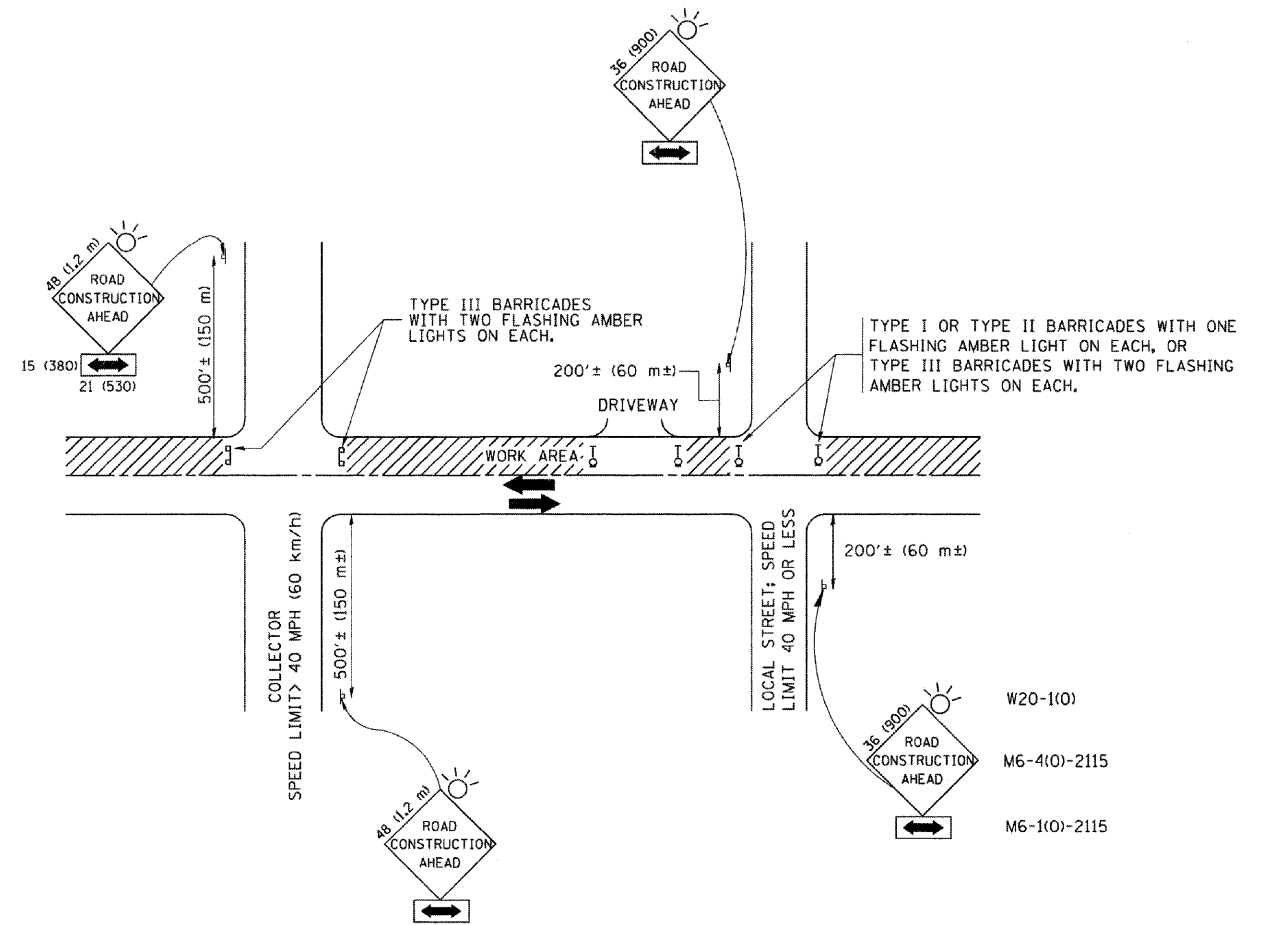
- A: MAINLINE ROADWAYS AND MAJOR SIDE ROADS.
- B: MINOR SIDE ROADS.
- C: THE TEMP. RAMP SHALL BE CONSTRUCTED IMMEDIATELY UPON REMOVAL OF THE EXISTING HMA SURFACE.
- D: THE BUTT JOINT SHALL BE CONSTRUCTED IMMEDIATELY PRIOR TO PLACING THE PROPOSED HMA COURSES.
- E: TAPER THE TEMP. RAMP AT A RATE OF 3'-0" (900 mm) PER 1 INCH (25 mm) OF MILLING THICKNESS.
- F: INSTALLATION AND REMOVAL OF THE 4'-6" (1.35 m) TEMP. RAMP IS INCLUDED IN COST OF HMA SURFACE REMOVAL - BUTT JOINT
- G: SEE ARTICLE 406.08 AND 406.14 OF THE STANDARD SPECIFICATIONS FOR "HMA AND/OR PCC SURFACE REMOVAL, BUTT JOINT".
- \* SEE TYPICAL SECTIONS FOR MILLING THICKNESS.
- \*\*\* 20'-0" (6.1 m) PER 1 (25) RESURFACING (NOTE "A")  
10'-0" (3.0 m) PER 1 (25) RESURFACING (NOTE "B")

ALL DIMENSIONS ARE IN INCHES (MILLIMETERS) UNLESS OTHERWISE SHOWN.

**BASIS OF PAYMENT:**

THE BUTT JOINT WILL BE PAID FOR AT THE CONTRACT UNIT PRICE PER SQUARE YARD (SQUARE METER) FOR "HOT-MIX ASPHALT SURFACE REMOVAL - BUTT JOINT" OR FOR "PORTLAND CEMENT CONCRETE SURFACE REMOVAL - BUTT JOINT".

**BUTT JOINT AND HMA TAPER DETAILS**



**NOTES:**

**A. FOR NO LANE RESTRICTION ON THE SIDE ROAD OR DRIVEWAYS**

1. SIDE ROAD WITH A SPEED LIMIT OF 40 MPH (60 km/h) OR LESS AS SHOWN ON THE DRAWING AND AS DIRECTED BY THE ENGINEER:
  - a) ONE ROAD CONSTRUCTION AHEAD SIGN 36 x 36 (900x900) WITH A FLASHER AND FLAG MOUNTED ON IT APPROXIMATELY 200' (60 m) IN ADVANCE OF THE MAIN ROUTE.
  - b) THE CLOSED PORTION OF THE MAIN ROUTE SHALL BE PROTECTED BY BLOCKING WITH TYPE I, TYPE II OR TYPE III BARRICADES, 1/3 OF THE CROSS SECTION OF THE CLOSED PORTION.
2. SIDE ROAD WITH A SPEED LIMIT GREATER THAN 40 MPH (60 km/h) AS SHOWN ON THE DRAWING AND AS DIRECTED BY THE ENGINEER:
  - a) ONE ROAD CONSTRUCTION AHEAD SIGN 48 x 48 (1.2 m x 1.2 m) WITH A FLASHER MOUNTED ON IT APPROXIMATELY 500' (150 m) IN ADVANCE OF THE MAIN ROUTE.
  - b) THE CLOSED PORTION OF THE MAIN ROUTE SHALL BE PROTECTED BY BLOCKING WITH TYPE III BARRICADES, 1/2 OF THE CROSS SECTION OF THE CLOSED PORTION.
3. WHEN THE SIDE ROAD LIES BETWEEN THE BEGINNING OF THE MAINLINE SIGNING AND THE WORK ZONE, A SINGLE HEADED ARROW (M6-1) SHALL BE USED IN LIEU OF THE DOUBLE HEADED ARROW (M6-4).

**B. FOR A LANE CLOSURE ON A SIDE ROAD OR DRIVEWAY:**

- USE APPLICABLE PORTIONS OF THE TYPICAL APPLICATION OF TRAFFIC CONTROL DEVICES (STD. 701501, STD. 701606 OR THE APPROPRIATE STANDARD). THE SPACING OF SIGNS AND BARRICADES SHALL BE ADJUSTED FOR FIELD CONDITIONS AS DIRECTED BY THE ENGINEER. THE DIRECTIONAL ARROW SHALL BE COVERED OR REMOVED WHEN NO LONGER CONSISTENT WITH THE SIDE ROAD LANE CLOSURE.
- C. ADVANCE WARNING SIGNS ARE TO BE OMITTED ON DRIVEWAY UNLESS OTHERWISE NOTED.
  - D. THE TRAFFIC CONTROL AND PROTECTION FOR SIDE ROADS, INTERSECTIONS, AND DRIVEWAYS SHALL BE INCIDENTAL TO THE COST OF SPECIFIED TRAFFIC CONTROL STANDARDS OR ITEMS.

All dimensions are in millimeters (inches) unless otherwise shown.

**TRAFFIC CONTROL AND PROTECTION FOR SIDE ROADS, INTERSECTIONS, AND DRIVEWAYS**

**LONCO, INC.**  
CONSULTING ENGINEERS  
1560 WALL ST., SUITE 222  
NAPERVILLE, ILLINOIS 60563 PH: (630) 577-9100

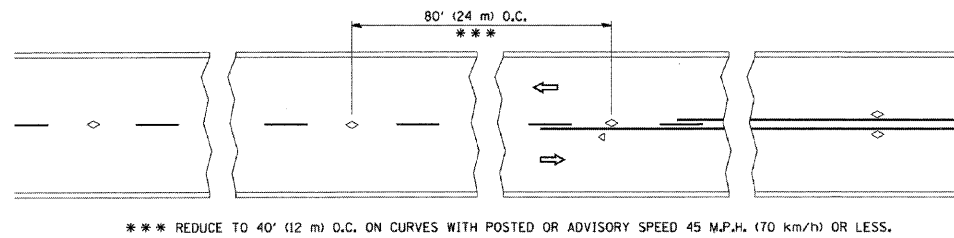
USER NAME = #USER#	DESIGNED - MJY	
	DRAWN - ST	REVISED -
PLOT SCALE = #SCALE#	CHECKED - MJY	REVISED -
PLOT DATE = #DATE#	DATE - 04/15/2009	REVISED -

**STATE OF ILLINOIS  
DEPARTMENT OF TRANSPORTATION**

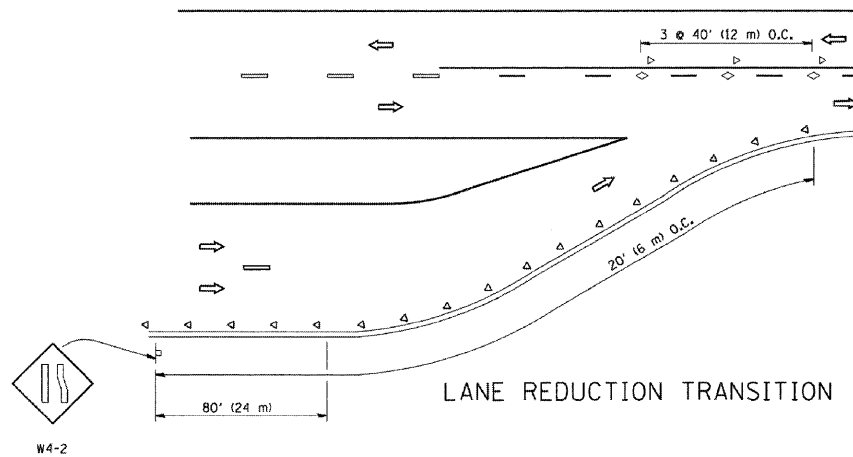
**DISTRICT ONE DETAIL SHEETS  
W HOFF ROAD**

SCALE: NONE SHEET NO. 13 OF 18 SHEETS STA. 43+00 TO STA. 173+00

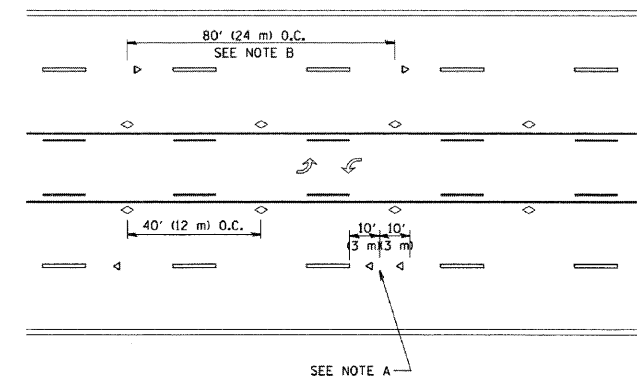
OR RTE.	SECTION	COUNTY	TOTAL SHEETS	SHEET NO.
297	1-G-RS-1	WILL	18	13
D-91-550-09		CONTRACT NO. 60G94		
FED. ROAD DIST. NO. ILLINOIS FED. AID PROJECT				



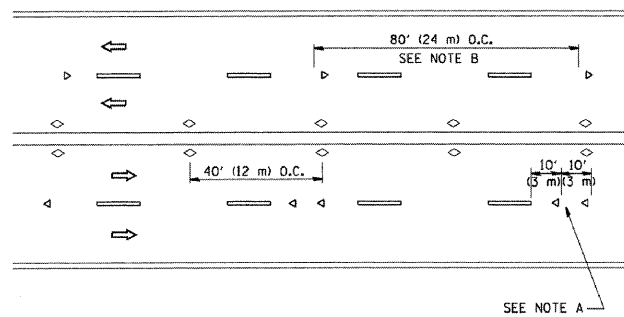
TWO-LANE/TWO-WAY



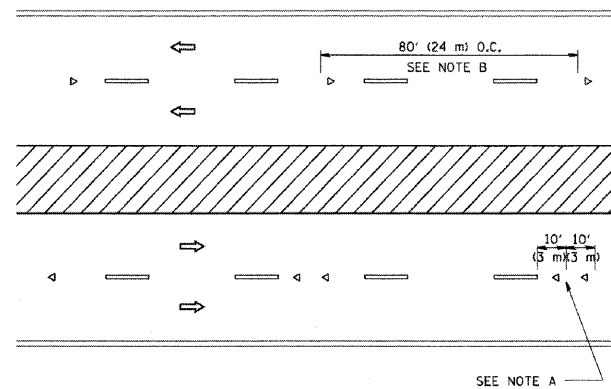
LANE REDUCTION TRANSITION



TWO-WAY LEFT TURN



MULTI-LANE/UNDIVIDED



MULTI-LANE/DIVIDED

GENERAL NOTES

1. MARKERS USED WITH DASHED LINES SHALL BE CENTERED IN THE GAP BETWEEN SEGMENTS.
2. MARKERS USED ADJACENT TO SOLID LINES SHALL BE OFFSET 2 TO 3 (50 TO 75) TOWARD TRAFFIC AS SHOWN.
3. MARKERS THROUGH TANGENTS LESS THAN 500' (150 m) IN LENGTH BETWEEN CURVES SHALL BE INSTALLED AT THE LESSER OF THE TWO CURVE SPACINGS.

SYMBOLS

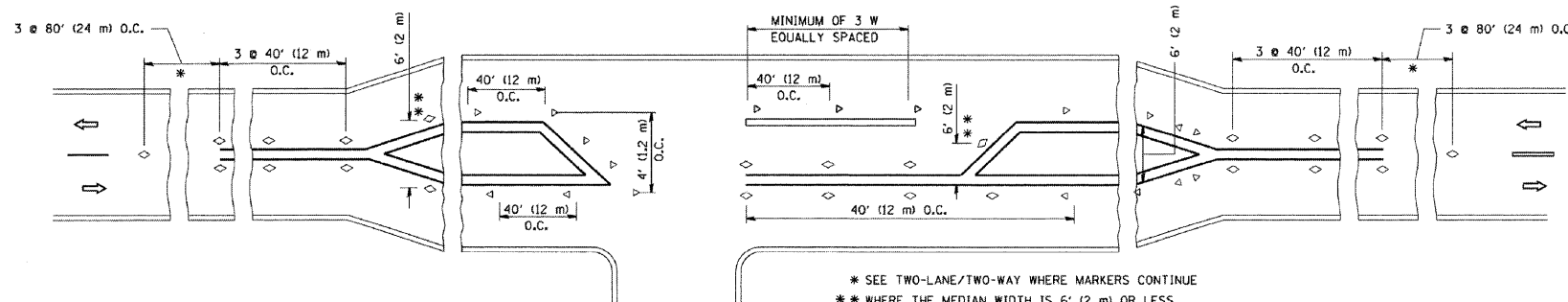
- YELLOW STRIPE
- WHITE STRIPE
- ◁ ONE-WAY AMBER MARKER
- ◁ ONE-WAY CRYSTAL MARKER (W/D)
- ◊ TWO-WAY AMBER MARKER

LANE MARKER NOTES

- A. USE DOUBLE LANE LINE MARKERS SPACED AS SHOWN.
- B. REDUCE TO 40' (12 m) O.C. ON CURVES WHERE ADVISORY SPEEDS ARE 10 M.P.H (20 km/h) LOWER THAN POSTED SPEEDS.

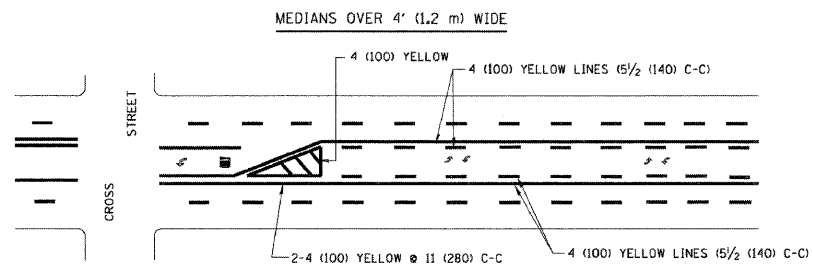
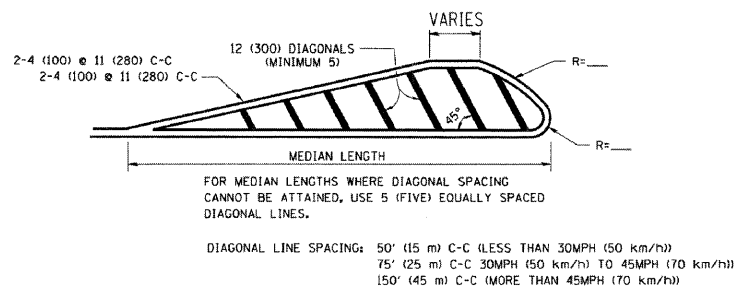
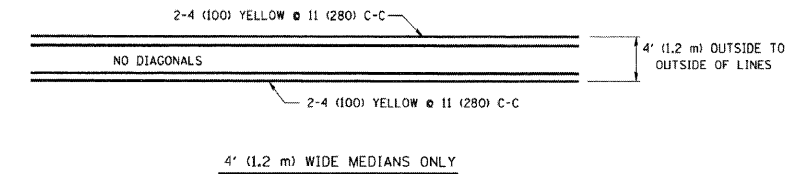
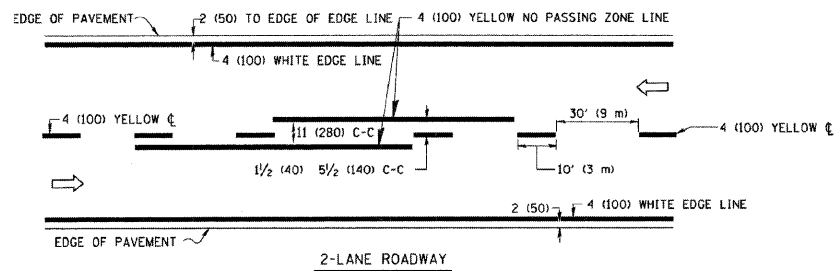
DESIGN NOTES

1. DOUBLE LANE LINE MARKERS SHALL BE USED UNLESS SPECIFIED OTHERWISE.
2. EXCEPT AS SHOWN ON THE LANE REDUCTION TRANSITION AND FREEWAY EXIT RAMP DETAIL, MARKERS ARE NOT TO BE SPECIFIED ON RIGHT EDGE LINES.
3. THE EXACT MARKER LIMITS, SPACING, AND COLOR SHOULD BE INCLUDED IN THE PLANS.
4. MARKERS SHOULD NOT BE USED ALONGSIDE CURBS EXCEPT FOR EXTREMELY SHORT SECTIONS OF CURBS WHERE NOT MORE THAN TWO MARKERS WOULD BE INVOLVED.

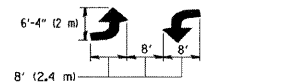


LEFT TURN

TYPICAL APPLICATIONS RAISED REFLECTIVE PAVEMENT MARKERS (SNOW-PLOW RESISTANT)

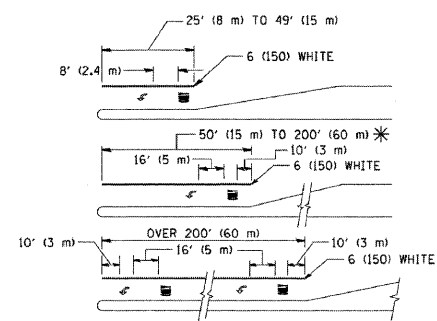


A MINIMUM OF TWO PAIRS OF TURN ARROWS SHALL BE USED, WHITE IN COLOR, ADDITIONAL PAIRS SHALL BE PLACED AT 200' (60 m) TO 300' (90 m) INTERVALS.



MEDIAN WITH TWO-WAY LEFT TURN LANE

TYPICAL PAINTED MEDIAN MARKING

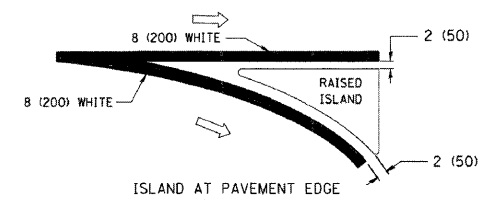
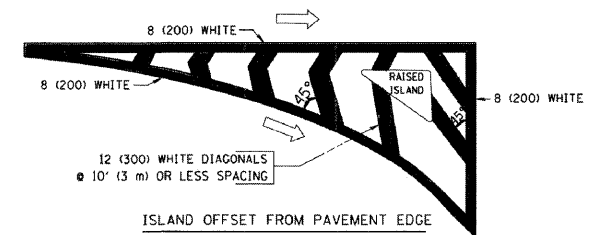


FULL SIZE LETTERS 8' (2.4 m) AND ARROWS SHALL BE USED.  
AREA = 15.6 SQ. FT. (1.5 m<sup>2</sup>) ONLY AREA = 20.8 SQ. FT. (1.9 m<sup>2</sup>)

\* TURN LANES IN EXCESS OF 400' (120 m) IN LENGTH MAY HAVE AN ADDITIONAL SET OF ARROW - "ONLY" INSTALLED MIDWAY BETWEEN THE OTHER TWO SETS OF ARROW - "ONLY".

TYPICAL LEFT (OR RIGHT) TURN LANE

TYPICAL TURN LANE MARKING

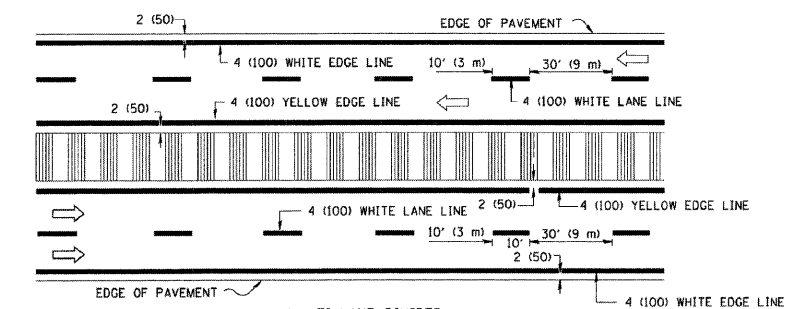
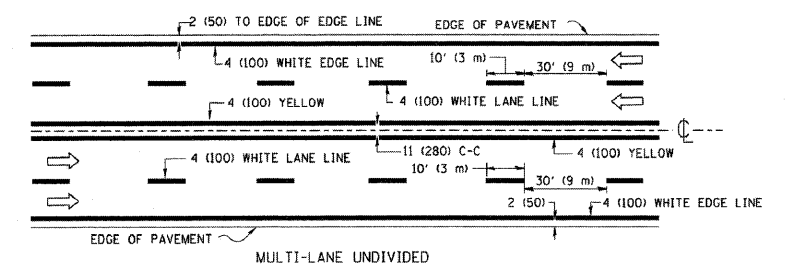


TYPICAL ISLAND MARKING

TYPE OF MARKING	WIDTH OF LINE	PATTERN	COLOR	SPACING / REMARKS
CENTERLINE ON 2 LANE PAVEMENT	4 (100)	SKIP-DASH	YELLOW	10' (3 m) LINE WITH 30' (9 m) SPACE
CENTERLINE ON MULTI-LANE UNDIVIDED PAVEMENT	2 @ 4 (100)	SOLID	YELLOW	11 (280) C-C
NO PASSING ZONE LINES FOR ONE DIRECTION FOR BOTH DIRECTIONS	4 (100) 2 @ 4 (100)	SOLID SOLID	YELLOW YELLOW	5/2 (140) C-C FROM SKIP-DASH CENTERLINE 11 (280) C-C OMIT SKIP-DASH CENTERLINE BETWEEN
LANE LINES	4 (100) 5 (125) ON FREEWAYS	SKIP-DASH SKIP-DASH	WHITE WHITE	10' (3 m) LINE WITH 30' (9 m) SPACE
DOTTED LINES (EXTENSIONS OF CENTER, LANE OR TURN LANE MARKINGS)	SAME AS LINE BEING EXTENDED	SKIP-DASH	SAME AS LINE BEING EXTENDED	2' (600) LINE WITH 6' (1.8 m) SPACE
EDGE LINES	4 (100)	SOLID	YELLOW-LEFT WHITE-RIGHT	OUTLINE MOUNTABLE MEDIANS IN YELLOW; EDGE LINES ARE NOT USED NEXT TO BARRIER CURB
TURN LANE MARKINGS	6 (150) LINE; FULL SIZE LETTERS & SYMBOLS (8' (2.4m))	SOLID	WHITE	SEE TYPICAL TURN LANE MARKING DETAIL
TWO WAY LEFT TURN MARKING	2 @ 4 (100) EACH DIRECTION 8' (2.4m) LEFT ARROW	SKIP-DASH AND SOLID IN PAIRS	YELLOW WHITE	10' (3 m) LINE WITH 30' (9 m) SPACE FOR SKIP-DASH; 5/2 (140) C-C BETWEEN SOLID LINE AND SKIP-DASH LINE SEE TYPICAL TWO-WAY LEFT TURN MARKING DETAIL
CROSSWALK LINES (PEDESTRIAN) A. DIAGONALS (BIKE & EQUESTRIAN) B. LONGITUDINAL BARS (SCHOOL)	2 @ 6 (150) 12 (300) @ 45° 12 (300) @ 90°	SOLID SOLID SOLID	WHITE WHITE WHITE	NOT LESS THAN 6' (1.8 m) APART 2' (600) APART 2' (600) APART SEE TYPICAL CROSSWALK MARKING DETAILS.
STOP LINES	24 (600)	SOLID	WHITE	PLACE 4' (1.2 m) IN ADVANCE OF AND PARALLEL TO CROSSWALK, IF PRESENT. OTHERWISE, PLACE AT DESIRED STOPPING POINT, PARALLEL TO CROSSROAD CENTERLINE, WHERE POSSIBLE
PAINTED MEDIANS	2 @ 4 (100) WITH 12 (300) DIAGONALS @ 45° NO DIAGONALS USED FOR 4' (1.2 m) WIDE MEDIANS	SOLID	YELLOW; TWO WAY TRAFFIC WHITE; ONE WAY TRAFFIC	11 (280) C-C FOR THE DOUBLE LINE SEE TYPICAL PAINTED MEDIAN MARKING.
GORE MARKING AND CHANNELIZING LINES	8 (200) WITH 12 (300) DIAGONALS @ 45°	SOLID	WHITE	DIAGONALS: 15' (4.5 m) C-C (LESS THAN 30MPH (50 km/h)) 20' (6 m) C-C 30MPH (50 km/h) TO 45MPH (70 km/h) 30' (9 m) C-C (OVER 45MPH (70 km/h))
RAILROAD CROSSING	24 (600) TRANSVERSE LINES; "RR" IS 6' (1.8 m) LETTERS; 16 (400) LINE FOR "X"	SOLID	WHITE	SEE STATE STANDARD 780001 AREA OF: "R"=3.6 SQ. FT. (0.33 m <sup>2</sup> ) EACH "X"=54.0 SQ. FT. (5.0 m <sup>2</sup> )
SHOULDER DIAGONALS	12 (300) @ 45°	SOLID	WHITE - RIGHT YELLOW - LEFT	50' (15 m) C-C (LESS THAN 30MPH (50 km/h)) 75' (25 m) C-C (30 MPH (50 km/h) TO 45MPH (70 km/h)) 150' (45 m) C-C (OVER 45MPH (70 km/h))

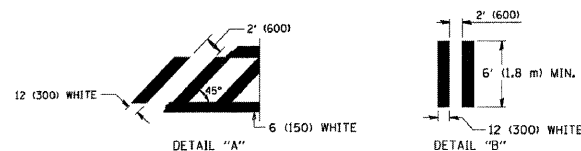
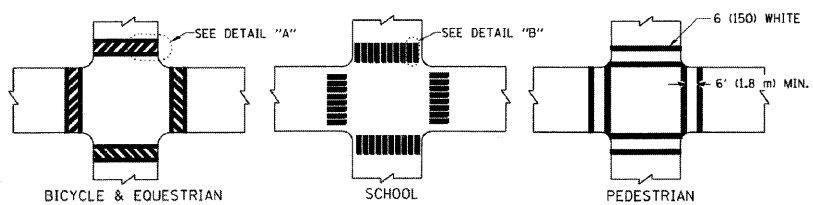
FOR FURTHER DETAILS ON PAVEMENT MARKING REFER TO STANDARD SPECIFICATIONS FOR ROAD AND BRIDGE CONSTRUCTION AND STATE STANDARD 780001.

All dimensions are in inches (millimeters) unless otherwise shown.



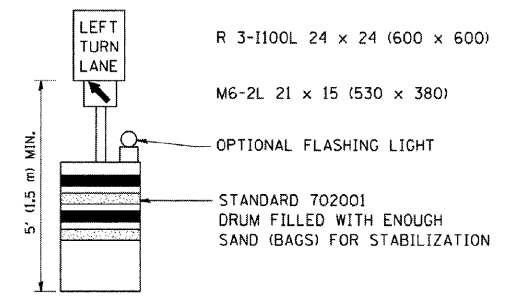
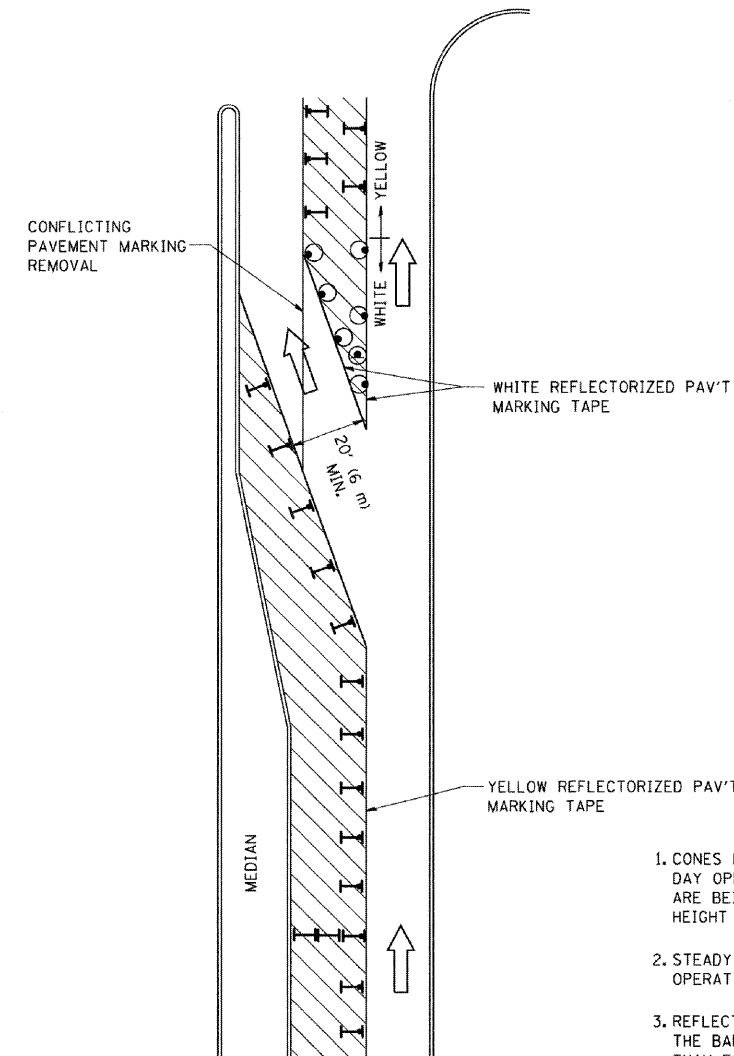
NOTE: MEDIANS WITH BARRIER CURB DO NOT REQUIRE AN EDGE LINE

TYPICAL LANE AND EDGE LINE MARKING



TYPICAL CROSSWALK MARKING

## DISTRICT ONE TYPICAL PAVEMENT MARKINGS

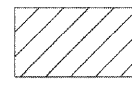
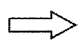



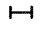


**GENERAL NOTES**

1. CONES MAY BE SUBSTITUTED FOR BARRICADES OR DRUMS AT HALF THE SPACING DURING DAY OPERATIONS. CONES SHALL BE A MINIMUM OF 28 (710) IN HEIGHT. WHEN CONES ARE BEING USED, THE "LEFT TURN LANE" SIGN MAY BE SKID MOUNTED AT A MINIMUM HEIGHT OF 5' (1.5 m).
2. STEADY BURNING LIGHTS WILL NOT BE REQUIRED ON BARRICADES OR DRUMS FOR DAY OPERATIONS. ALL LIGHTS SHALL BE MONODIRECTIONAL.
3. REFLECTORIZED TEMPORARY PAVEMENT MARKING TAPE SHALL BE PLACED THROUGHOUT THE BARRICADED AREA OF EACH TURN BAY WHERE THE CLOSURE TIME IS GREATER THAN FOURTEEN DAYS.
4. THIS APPLICATION ALSO APPLIES WHEN WORK IS BEING PERFORMED IN THE RIGHT LANE(S) AND THE RIGHT TURN BAY IS TO REMAIN OPEN. UNDER THIS CONDITION, "RIGHT TURN LANE" R3-100 24 x 24 (600 x 600) AND M6-2R 21 x 15 (530 x 380) SHALL BE USED.
5. THESE CONTROLS SHALL SUPPLEMENT MAINLINE TRAFFIC CONTROL FOR LANE CLOSURES.
6. LONGITUDINAL DIMENSIONS MAY BE ADJUSTED TO FIT FIELD CONDITIONS.
7. FORM BT 725 IS REQUIRED.
8. TRAFFIC CONTROL AND PROTECTION AT TURN BAYS (TO REMAIN OPEN TO TRAFFIC) SHALL BE INCLUDED IN THE COST SPECIFIED TRAFFIC CONTROL STANDARDS OR ITEMS.

All dimensions are in inches (millimeters) unless otherwise shown.

**LEGEND**

-  WORK AREA
-  LANE OPEN TO TRAFFIC
-  TYPE I OR II BARRICADE WITH STEADY BURN LIGHT
-  DRUM WITH STEADY BURN LIGHT
-  DRUM WITH SIGN (WITH OPTIONAL FLASHING LIGHT) SEE DETAIL
-  TYPE I OR II CHECK BARRICADE WITH FLASHING LIGHT

**TRAFFIC CONTROL AND PROTECTION AT TURN BAYS (TO REMAIN OPEN TO TRAFFIC)**

**LOCO, INC.**  
CONSULTING ENGINEERS  
1560 WALL ST, SUITE 222  
NAPERVILLE, ILLINOIS 60563 PH 630/577-9100

USER NAME = #USER#	DESIGNED - MJY		
	DRAWN - ST	REVISED -	
PLOT SCALE = #SCALE#	CHECKED - MJY	REVISED -	
PLOT DATE = #DATE#	DATE - 04/15/2009	REVISED -	

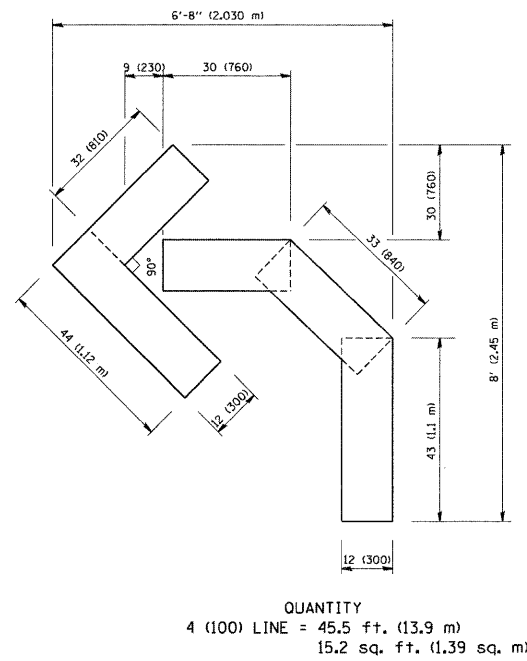
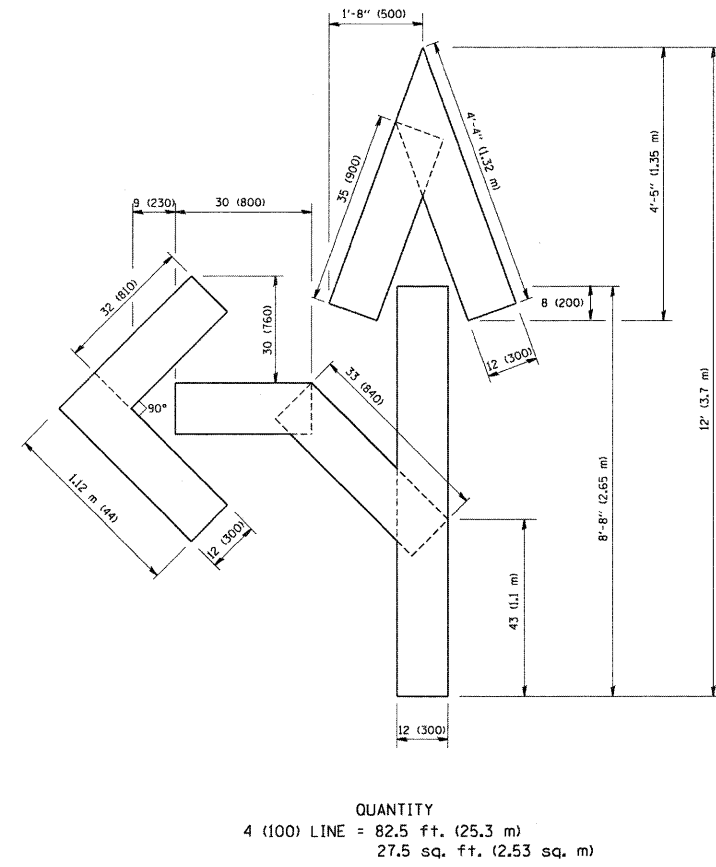
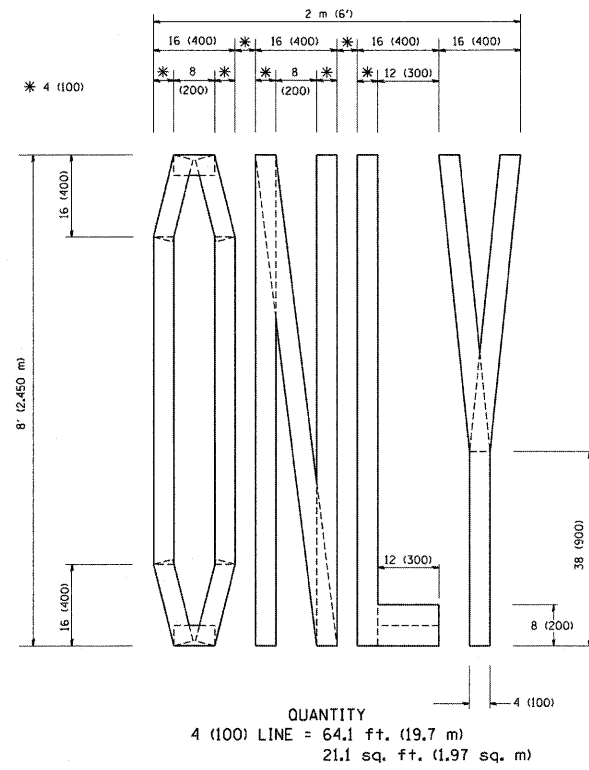
**STATE OF ILLINOIS  
DEPARTMENT OF TRANSPORTATION**

**DISTRICT ONE DETAIL SHEETS  
W HOFF ROAD**

SCALE: NONE SHEET NO. 16 OF 18 SHEETS STA. 43+00 TO STA. 173+00

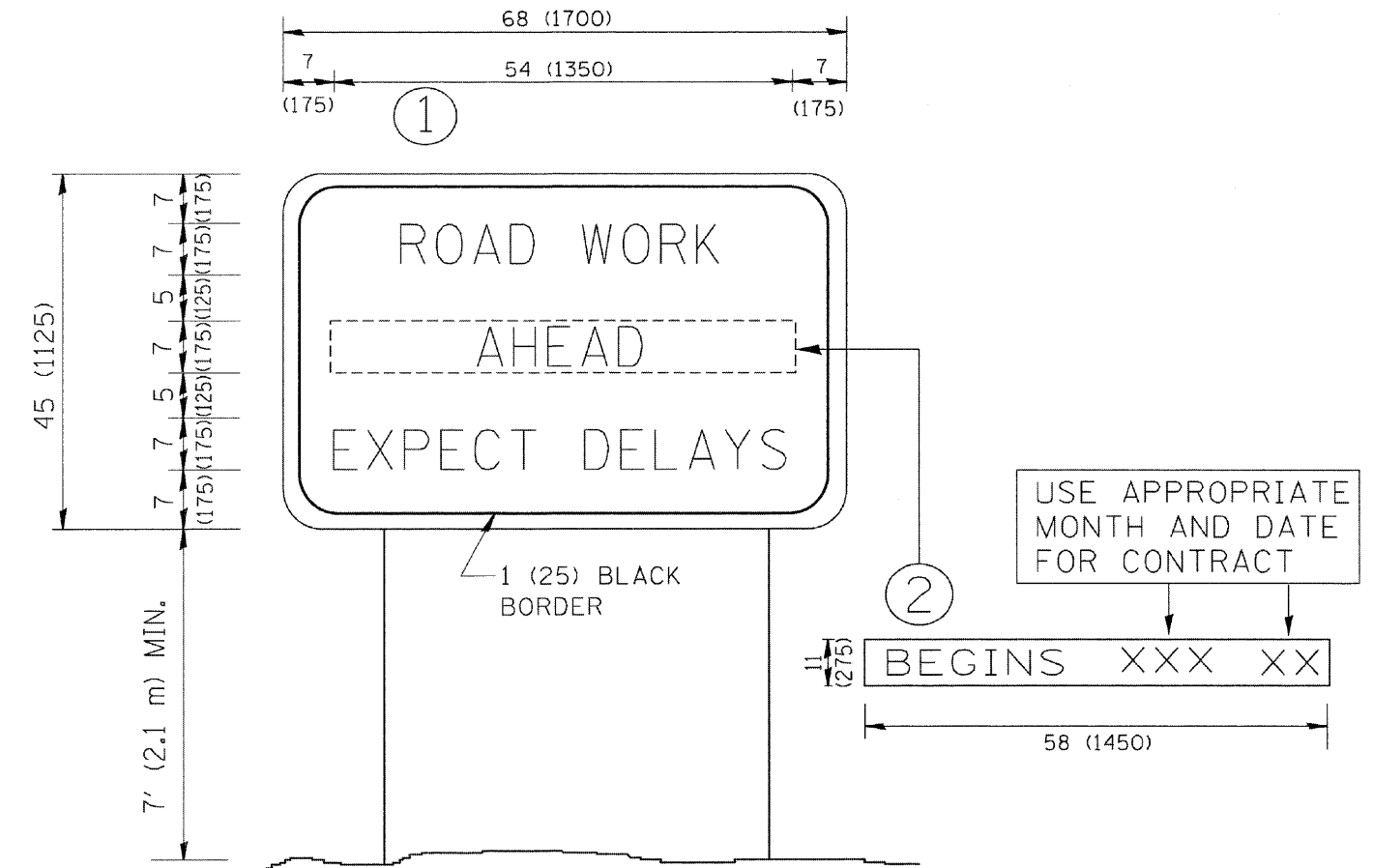
OR RTE.	SECTION	COUNTY	TOTAL SHEETS	SHEET NO.
297	1-G-RS-1	WILL	18	16
D-91-550-09			CONTRACT NO. 60G94	
FED. ROAD DIST. NO.		ILLINOIS FED. AID PROJECT		





All dimensions are in inches (millimeters) unless otherwise shown.

## PAVEMENT MARKING LETTERS AND SYMBOLS FOR TRAFFIC STAGING



**NOTES:**

1. USE BLACK LETTERING ON ORANGE BACKGROUND.
2. ERECT SIGNS IN ADVANCE OF THE LOCATION FOR THE "ROAD CONSTRUCTION AHEAD" SIGN AT LOCATIONS AS DIRECTED BY THE ENGINEER.
3. ERECT SIGN ① WITH INSTALLED PANEL ② ONE WEEK PRIOR TO THE START OF CONSTRUCTION.
4. REMOVE PANEL ② SOON AFTER THE START OF CONSTRUCTION.
5. SEE SPECIAL PROVISION FOR "TEMPORARY INFORMATION SIGNING" FOR ADDITIONAL INFORMATION.
6. ONE SIGN ASSEMBLY EQUALS 25.70 SQ. FT. (2.3 SQ. M.)
7. SHALL BE PAID FOR AS TEMPORARY INFORMATION SIGNING.

ALL DIMENSIONS ARE IN INCHES (MILLIMETERS) UNLESS OTHERWISE SHOWN.

**ARTERIAL ROAD INFORMATION SIGN**

<b>LOCO, INC.</b> CONSULTING ENGINEERS 1560 WALL ST, SUITE 222 NAPERVILLE, ILLINOIS 60563 PH 630/577-9100	USER NAME = #USERS	DESIGNED - MJY		<b>STATE OF ILLINOIS          DEPARTMENT OF TRANSPORTATION</b>	<b>DISTRICT ONE DETAIL SHEETS          W HOFF ROAD</b>			OR RTE.	SECTION	COUNTY	TOTAL SHEETS	SHEET NO.
	PLOT SCALE = #SCALE#	DRAWN - ST	REVISED -		297	1-G-RS-1	WILL	18	18			
PLOT DATE = #DATES	CHECKED - MJY	REVISED -	SCALE: NONE    SHEET NO. 18 OF 18 SHEETS    STA. 43+00 TO STA. 173+00			<b>D-91-550-09</b>		<b>CONTRACT NO. 60G94</b>				
	DATE - 04/15/2009	REVISED -	FED. ROAD DIST. NO.    ILLINOIS FED. AID PROJECT									