

F.A. RTE.	SECTION	COUNTY	TOTAL SHEETS	SHEET NO.
345	9 RS-7	KANE	25A	1
FED. ROAD DIST. NO.	ILLINOIS	CONTRACT NO. 60H26		

* 25+1=26

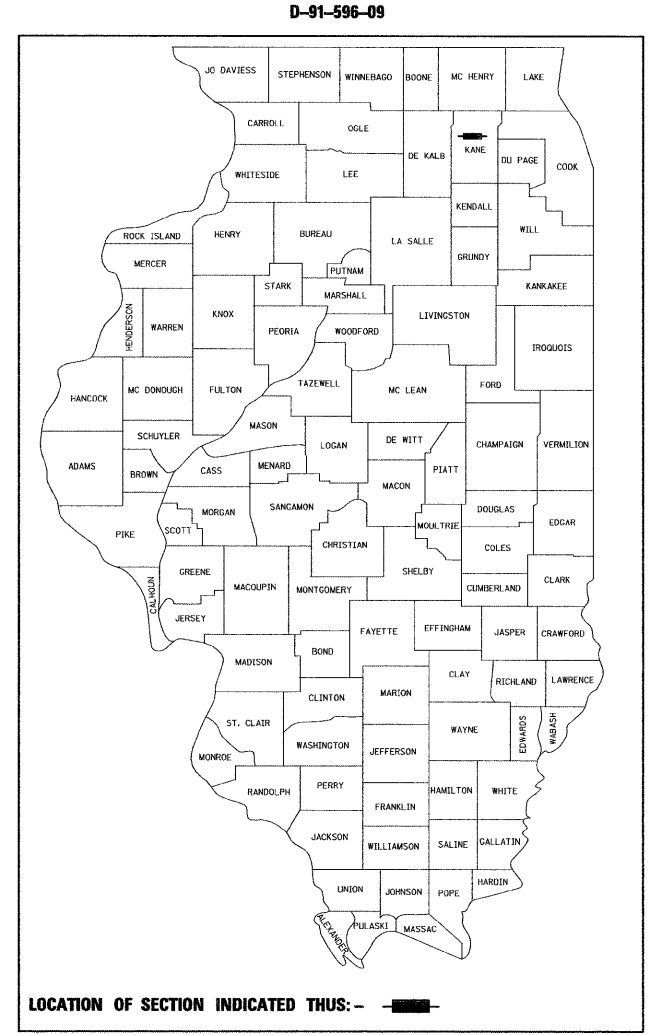
STATE OF ILLINOIS
DEPARTMENT OF TRANSPORTATION
DIVISION OF HIGHWAYS

**PROPOSED
HIGHWAY PLANS**

FAP 345 / US 20 (LAKE ST)
ILL 47 TO W OF PLANK RD.
SECTION: 9 RS-7
RESURFACING IMPROVEMENT
KANE COUNTY
C-91-596-09

FOR INDEX OF SHEETS, SEE SHEET NO. 2

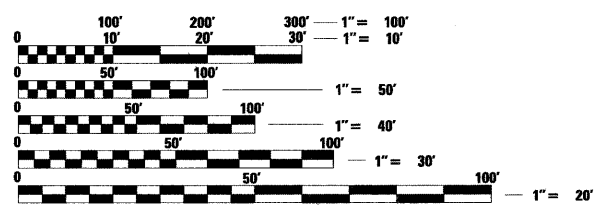
THE IMPROVEMENT IS LOCATED
IN THE TOWNSHIPS OF RUTLAND
AND PLATO AND THE VILLAGE OF
PINGREE GROVE



LOCATION OF SECTION INDICATED THUS: —



TRAFFIC DATA:
2006 ADT = 10100
POSTED SPEED LIMIT = 55 MPH
40 MPH (PINGREE GROVE)

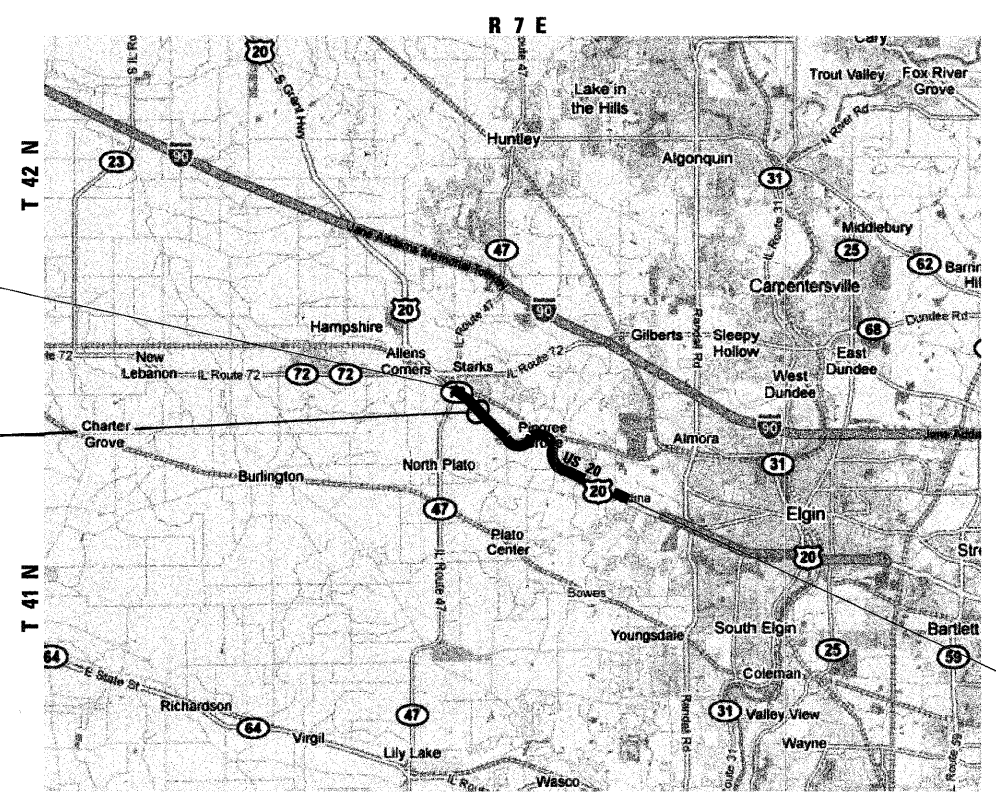


FULL SIZE PLANS HAVE BEEN PREPARED USING STANDARD
ENGINEERING SCALES. REDUCED SIZED PLANS WILL NOT
CONFORM TO STANDARD SCALES. IN MAKING MEASUREMENTS
ON REDUCED PLANS, THE ABOVE SCALES MAY BE USED.

J.U.L.I.E.
JOINT UTILITY LOCATION INFORMATION FOR EXCAVATION
1-800-892-0123
OR 811

PROJECT BEGINS
STA. 40 + 30

OMMISIONS
STA. 64 + 68 TO 77 + 70



RUTLAND AND PLATO TOWNSHIPS

PROJECT ENDS
STA. 314 + 00

JOSEPH P. NEAL
ALFRED BENESCH & CO.



EXPIRATION DATE 11-30-09
DATE 4-21-09

STATE OF ILLINOIS
DEPARTMENT OF TRANSPORTATION
DIVISION OF HIGHWAYS

SUBMITTED APRIL 21 20 09

Diana M. O'Keefe DEPUTY DIRECTOR OF HIGHWAYS, REGION ENGINEER
May 1, 20 09

Charles G. Ingersoll ENGINEER OF DESIGN AND ENVIRONMENT
May 1, 20 09

Christine M. Reed DIRECTOR OF HIGHWAYS, CHIEF ENGINEER

PRINTED BY THE AUTHORITY
OF THE STATE OF ILLINOIS

CONSULTANT PROJECT ENGINEER: ISSAM RAYAN (847) 705-4556

benesch
alfred benesch & company
Engineers • Surveyors • Planners
205 North Michigan Avenue, Suite 2400
Chicago, Illinois 60601
312-565-0450

CONTRACT NO. 60H26

GROSS LENGTH OF IMPROVEMENT = 27,370 LINEAL FEET = 5.18 MILES
NET LENGTH OF IMPROVEMENT = 26,068 LINEAL FEET = 4.94 MILES