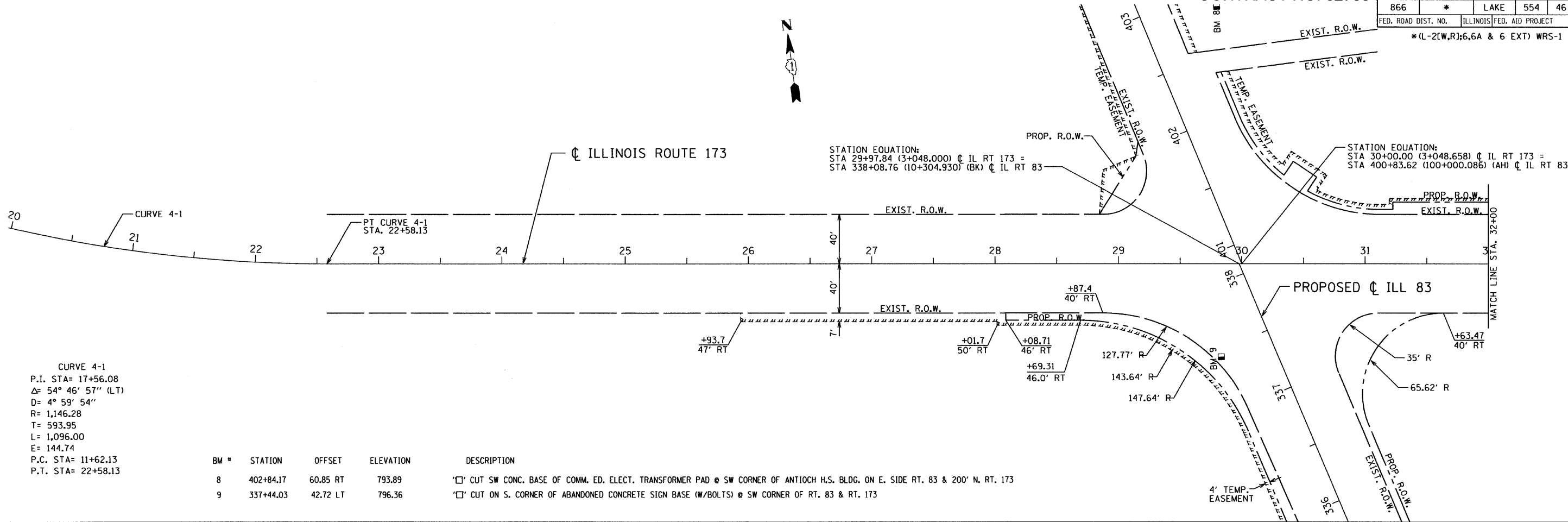
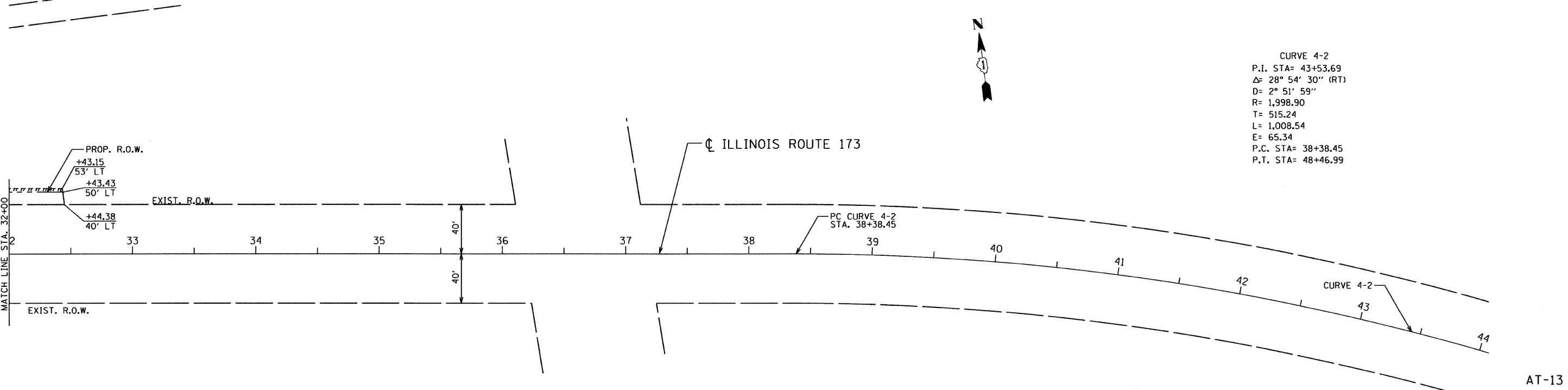


F.A. ROUTE NO.	SECTION	COUNTY	TOTAL SHEETS	SHEET NO.
866	*	LAKE	554	46
FED. ROAD DIST. NO.	ILLINOIS FED. AID PROJECT		* (L-2(W,R); 6, 6A & 6 EXT) WRS-1	




CURVE 4-1
 P.I. STA= 17+56.08
 $\Delta = 54^\circ 46' 57''$ (LT)
 $D = 4^\circ 59' 54''$
 $R = 1,146.28$
 $T = 593.95$
 $L = 1,096.00$
 $E = 144.74$
 P.C. STA= 11+62.13
 P.T. STA= 22+58.13

BM #	STATION	OFFSET	ELEVATION	DESCRIPTION
8	402+84.17	60.85 RT	793.89	'C' CUT SW CONC. BASE OF COMM. ED. ELECT. TRANSFORMER PAD @ SW CORNER OF ANTIOCH H.S. BLDG. ON E. SIDE RT. 83 & 200' N. RT. 173
9	337+44.03	42.72 LT	796.36	'C' CUT ON S. CORNER OF ABANDONED CONCRETE SIGN BASE (W/BOLTS) @ SW CORNER OF RT. 83 & RT. 173



CURVE 4-2
 P.I. STA= 43+53.69
 $\Delta = 28^\circ 54' 30''$ (RT)
 $D = 2^\circ 51' 59''$
 $R = 1,998.90$
 $T = 515.24$
 $L = 1,008.54$
 $E = 65.34$
 P.C. STA= 38+38.45
 P.T. STA= 48+46.99

AT-13

REVISIONS		ILLINOIS DEPARTMENT OF TRANSPORTATION ILLINOIS ROUTE 83 FROM THE WISCONSIN STATE LINE TO NORTH OF PETITE LAKE ROAD ALIGNMENT & TIE PLAN ILLINOIS ROUTE 173
NAME	DATE	
		DATE: 1/30/09 DRAWN BY: BR CHECKED BY: MW  GRAEF, ANHALT, SCHLOEMER & ASSOCIATES, INC. CHICAGO, ILLINOIS