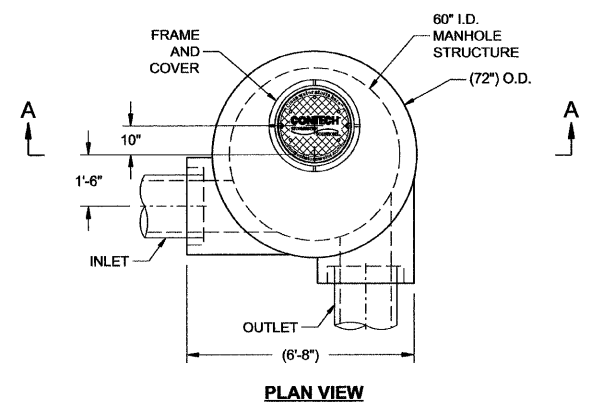
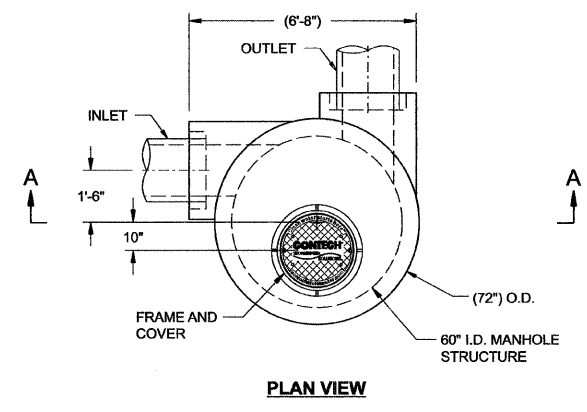


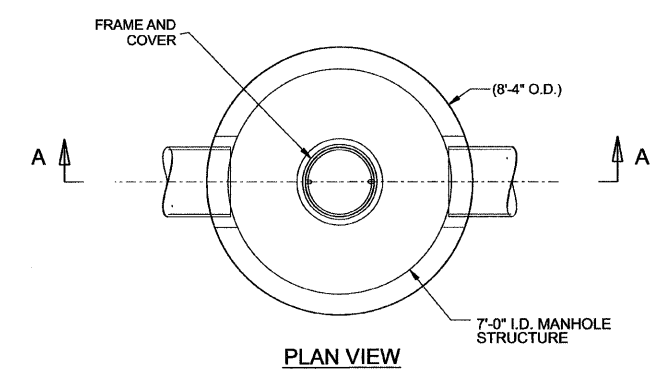
F.A. ROUTE NO.	SECTION	COUNTY	TOTAL SHEETS	SHEET NO.
866	*	LAKE	554	319A
FED. ROAD DIST. NO.		ILLINOIS	FED. AID PROJECT	
*(L-2[W,R];6,6A & 6 EXT) WRS-1				



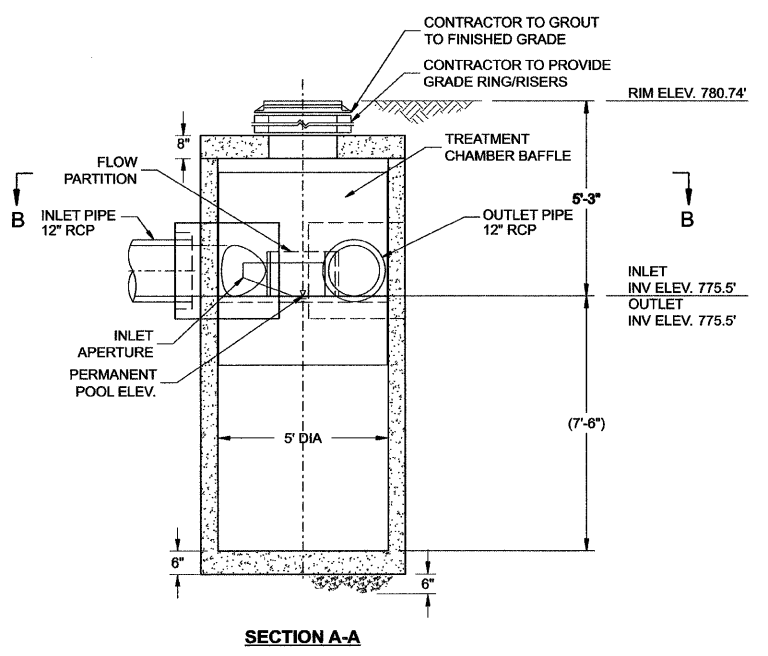
PLAN VIEW



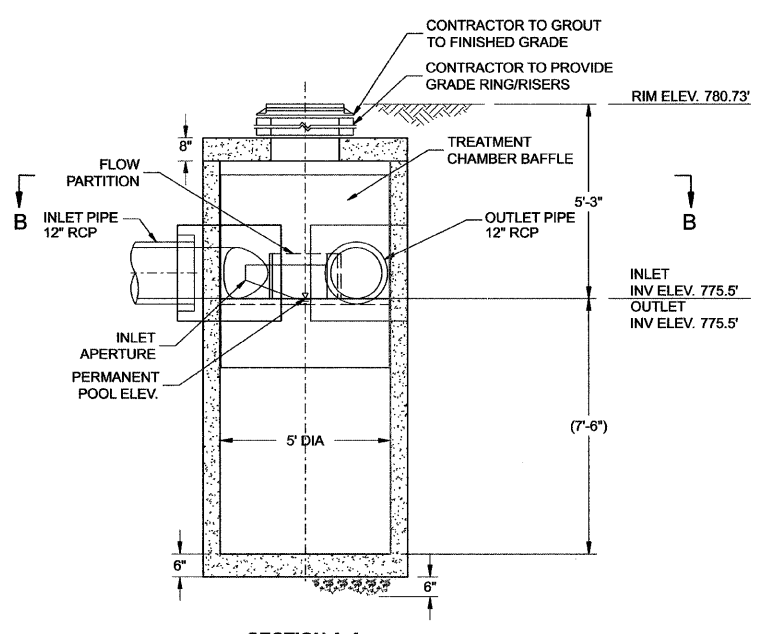
PLAN VIEW



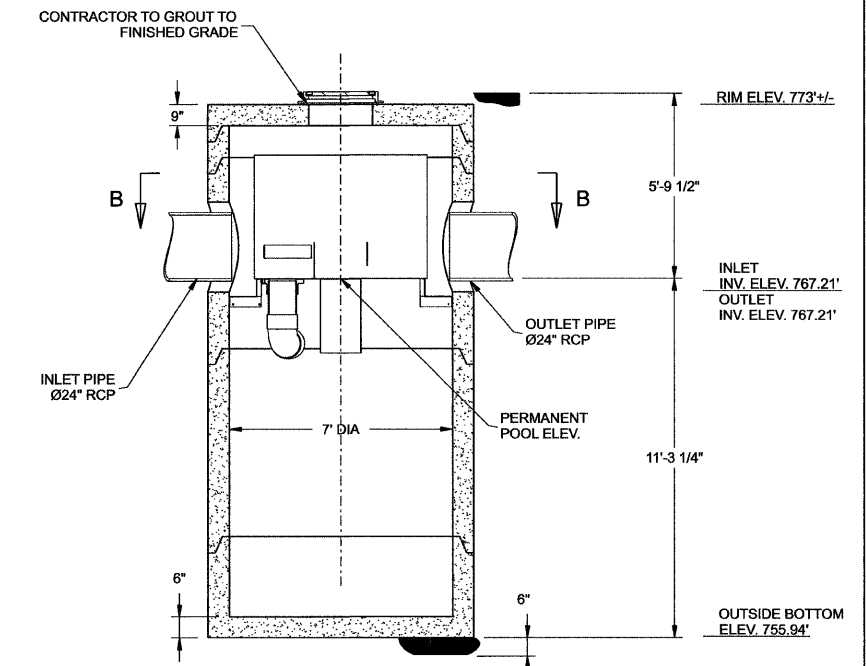
PLAN VIEW



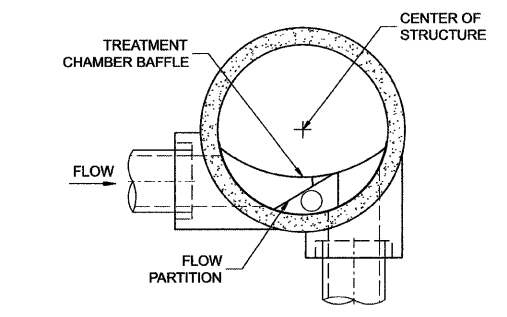
SECTION A-A



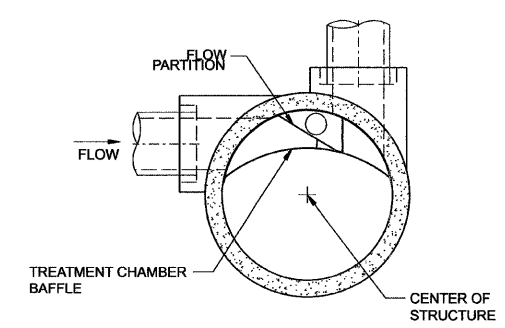
SECTION A-A



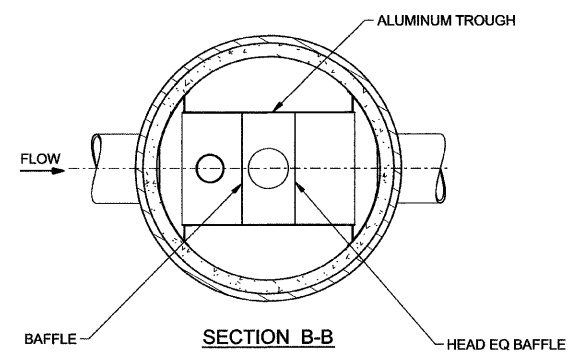
SECTION A-A



SECTION B-B



SECTION B-B



SECTION B-B

**STORMWATER TREATMENT UNIT VS50**  
STRUCTURE NO. 253

STRUCTURE TO BE VORTSENTRY MODEL VS50 BY CONTECH STORMWATER SOLUTIONS, OR APPROVED EQUAL

WATER QUALITY FLOW RATE: 1.1 CFS  
MINIMUM SEDIMENT STORAGE: 2.2 CU. YD.  
REMOVAL EFFICIENCY: 80% OF TSS (110 MICRON AVG PARTICLE SIZE)

REFER TO THE SPECIAL PROVISIONS FOR ADDITIONAL PERFORMANCE REQUIREMENTS

**STORMWATER TREATMENT UNIT VS50**  
STRUCTURE NO. 258

STRUCTURE TO BE VORTSENTRY MODEL VS50 BY CONTECH STORMWATER SOLUTIONS, OR APPROVED EQUAL

WATER QUALITY FLOW RATE: 1.1 CFS  
MINIMUM SEDIMENT STORAGE: 2.2 CU. YD.  
REMOVAL EFFICIENCY: 80% OF TSS (110 MICRON AVG PARTICLE SIZE)

REFER TO THE SPECIAL PROVISIONS FOR ADDITIONAL PERFORMANCE REQUIREMENTS

**STORMWATER TREATMENT UNIT VS50**  
STRUCTURE NO. 253

STRUCTURE TO BE VORTSENTRY HS MODEL VS50 BY CONTECH STORMWATER SOLUTIONS, OR APPROVED EQUAL

WATER QUALITY FLOW RATE: 5.6 CFS  
MINIMUM SEDIMENT STORAGE: 2.8 CU. YD.  
REMOVAL EFFICIENCY: 80% OF TSS (240 MICRON AVG PARTICLE SIZE)

REFER TO THE SPECIAL PROVISIONS FOR ADDITIONAL PERFORMANCE REQUIREMENTS

**MATERIALS LIST - PROVIDED BY CONTECH OR APPROVED MANUFACTURER**

COUNT	DESCRIPTION	INSTALLED BY
1	INTERNAL ALUM. COMPONENTS	SUPPLIER
1	SEALANT FOR JOINTS	CONTRACTOR
1	Ø24" x 4" FRAME AND COVER	CONTRACTOR

**SUPPLIER GENERAL NOTES**

- CONTECH OR OTHER APPROVED SUPPLIER TO PROVIDE ALL MATERIALS UNLESS NOTED OTHERWISE.
- DIMENSIONS MARKED WITH ( ) ARE REFERENCE DIMENSIONS. ACTUAL DIMENSIONS MAY VARY.
- CONTRACTOR TO PROVIDE FABRICATION DRAWINGS WITH DETAILED STRUCTURE DIMENSIONS AND WEIGHT.
- STORMWATER TREATMENT UNITS SHALL BE IN ACCORDANCE WITH ALL DESIGN DATA AND INFORMATION CONTAINED IN THIS DRAWING.
- STRUCTURE AND CASTINGS SHALL MEET AASHTO H20 LOAD RATING.

**SUPPLIER INSTALLATION NOTES**

- ANY SUB-BASE, BACKFILL DEPTH, AND/OR ANTI-FLOTATION PROVISIONS ARE SITE SPECIFIC DESIGN CONSIDERATIONS AND SHALL BE SPECIFIED BY THE ENGINEER OF RECORD.
- CONTRACTOR TO PROVIDE EQUIPMENT WITH SUFFICIENT LIFTING AND REACH CAPACITY TO LIFT AND SET THE STORMWATER TREATMENT UNIT STRUCTURES (LIFTING CLUTCHES PROVIDED).
- CONTRACTOR TO INSTALL JOINT SEALANT BETWEEN ALL STRUCTURE SECTIONS AND ASSEMBLE STRUCTURE.
- CONTRACTOR TO PROVIDE, INSTALL, AND GROUT PIPES. MATCH PIPE INVERTS WITH ELEVATIONS SHOWN.

**STRUCTURE WEIGHT**

APPROXIMATE HEAVIEST PICK = 13,000 LBS (VS50 UNITS)  
15,000 LBS (VSHS84 UNIT)

REVISIONS		ILLINOIS DEPARTMENT OF TRANSPORTATION FROM THE WISCONSIN STATE LINE TO NORTH OF PETITE LAKE ROAD <b>STORM WATER TREATMENT UNIT DETAILS</b> DATE: 1/30/09 DRAWN BY: TMM CHECKED BY: RJS
NAME	DATE	
		GRAEF, ANHALT, SCHLOEMER & ASSOCIATES, INC. CHICAGO, ILLINOIS

G:\2000\4024\N.ms\p\cns\st\Detail\STU.dgn 4/29/2009 9:04:22 AM