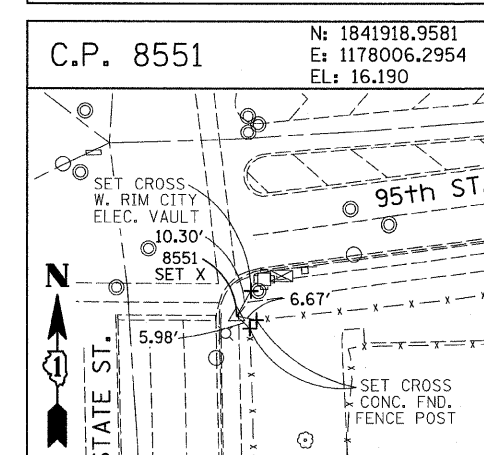
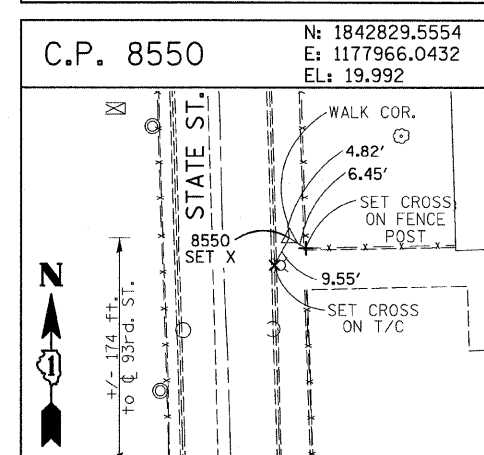
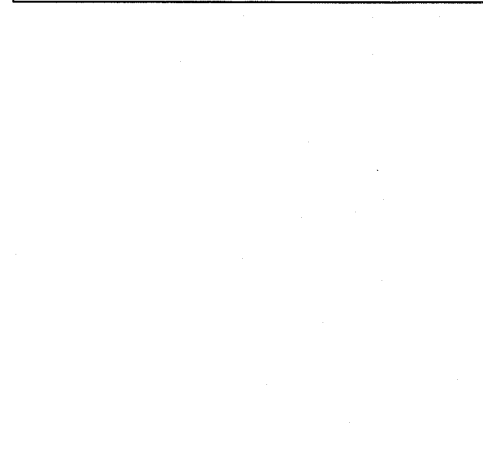
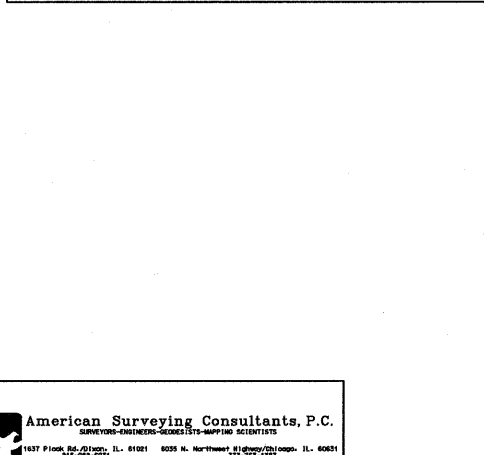
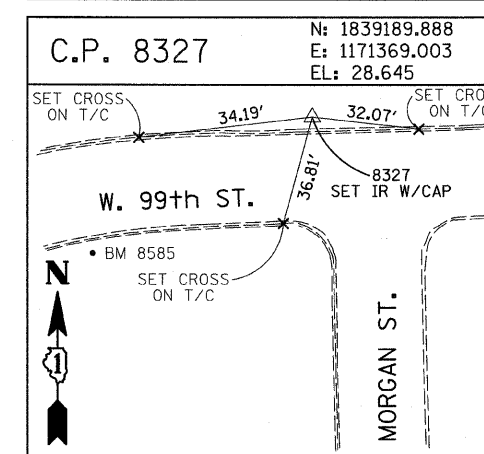
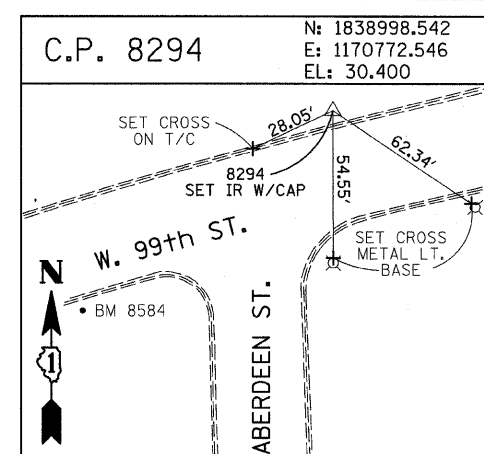
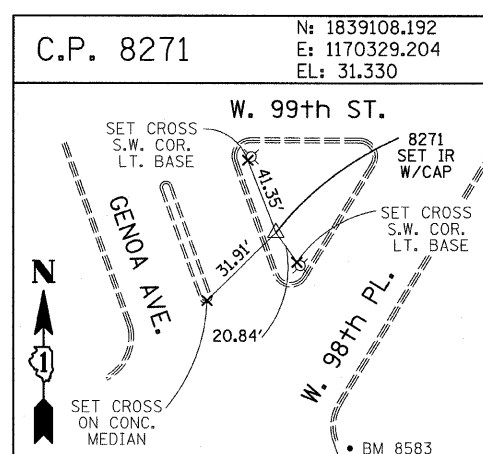
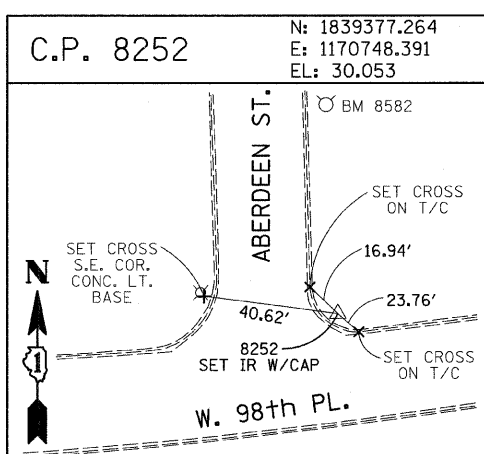
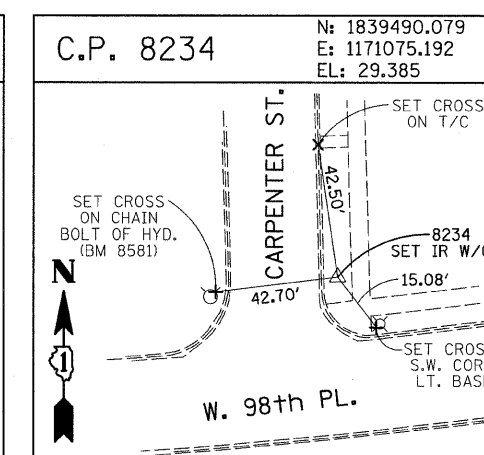
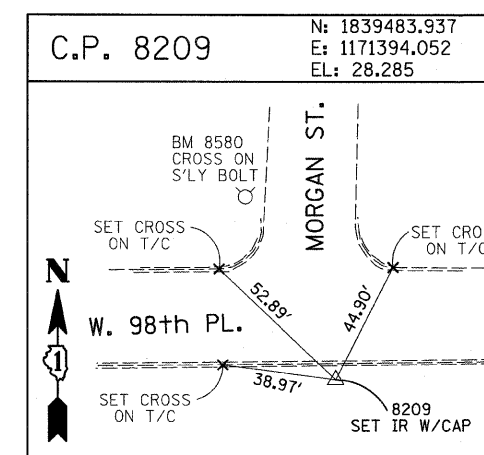
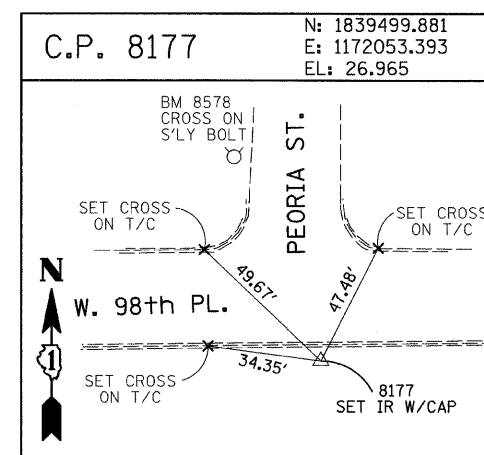
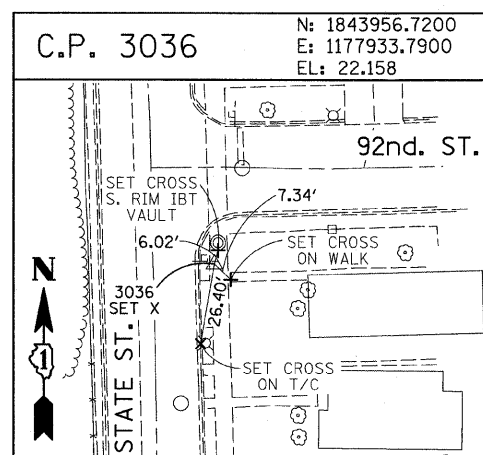
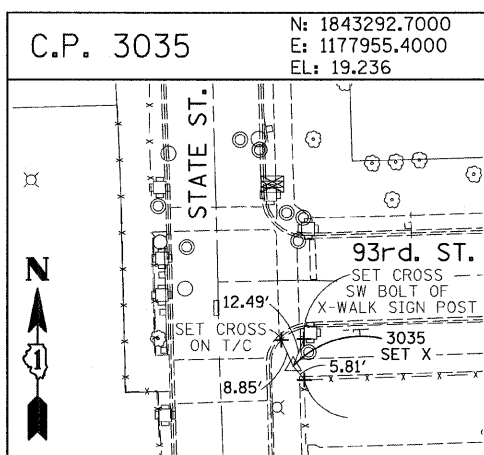
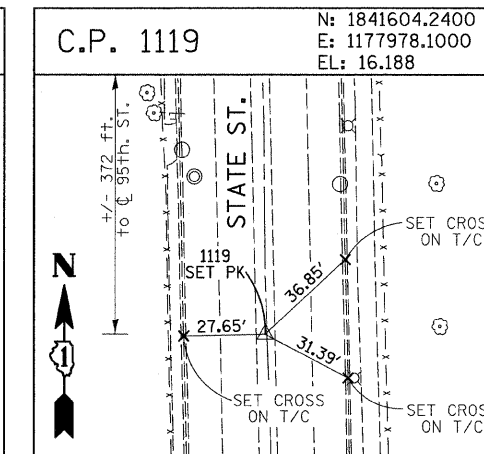
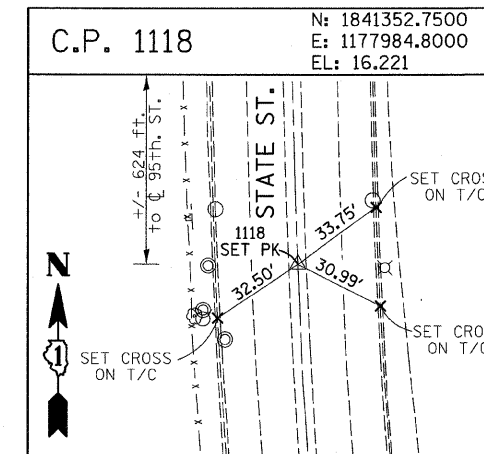
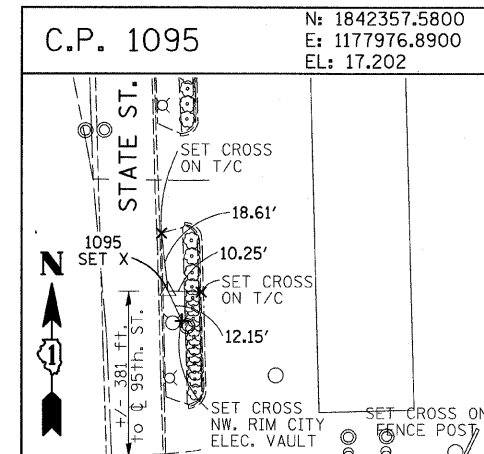
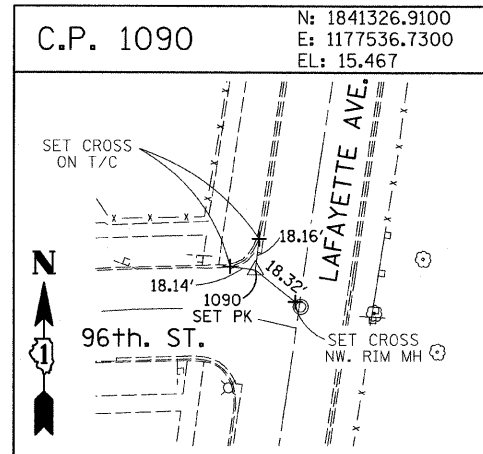
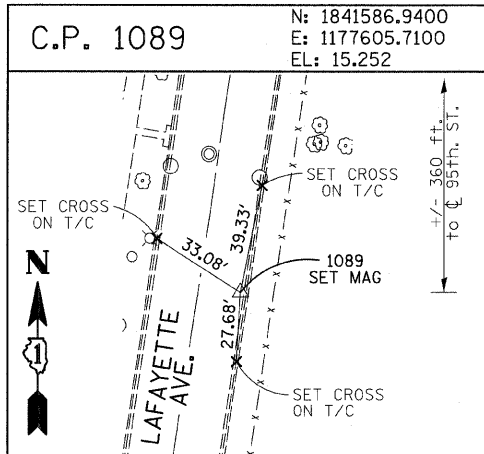


F.A.I. RTE.	SECTION	COUNTY	TOTAL SHEETS	SHEET NO.
94	(1516.1&1717) I-8	COOK	40	15
STA. 2248+65.17		TO STA. 2258+61.09		
FED. ROAD DIST. NO. ILLINOIS FED. AID PROJECT				

62972



American Surveying Consultants, P.C.
1187 Plank Road, Naperville, IL 60563
630-335-1111

REVISIONS	
NAME	DATE

ILLINOIS DEPARTMENT OF TRANSPORTATION
F.A.I. 94 (DAN RYAN EXPRESSWAY)
SURVEY TIES FOR CONTROL POINTS
SHEET 6 OF 7
SCALE: 1"=30'
DATE: OCTOBER 17, 2008
DRAWN BY: GSP
CHECKED BY: MMW

10/17/2008 10:45:04 AM P:\0237\3\road\c256\c256sh03.dwg