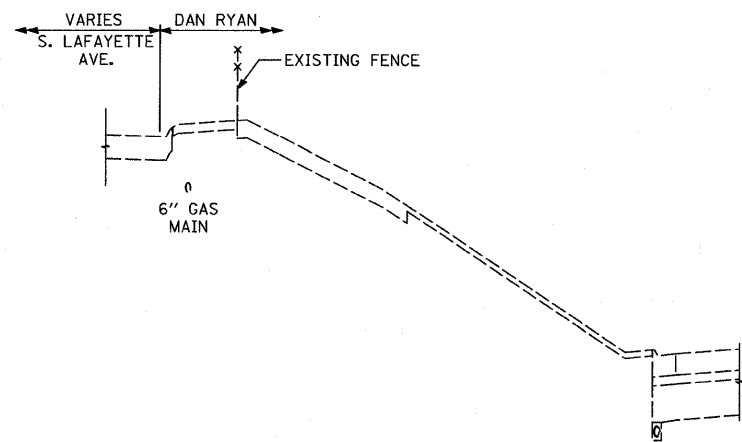
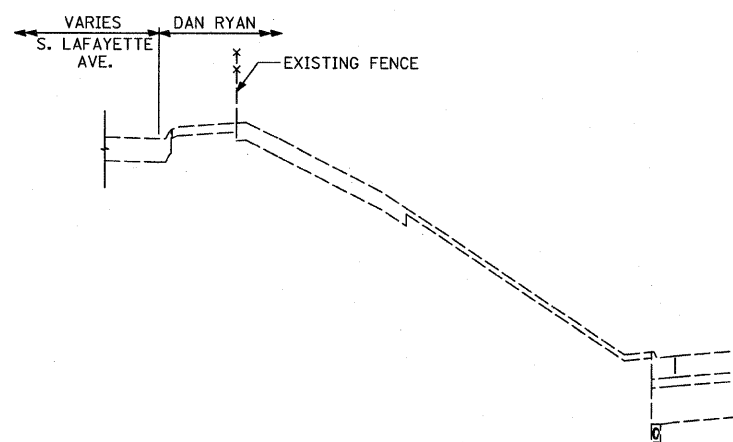


F.A.I. RTE.	SECTION	COUNTY	TOTAL SHEETS	SHEET NO.
94	1717 I-7	COOK	47	4
STA. 1259+91.12 TO STA. 1270+24.39				
FED. ROAD DIST. NO.		ILLINOIS	FED. AID PROJECT	

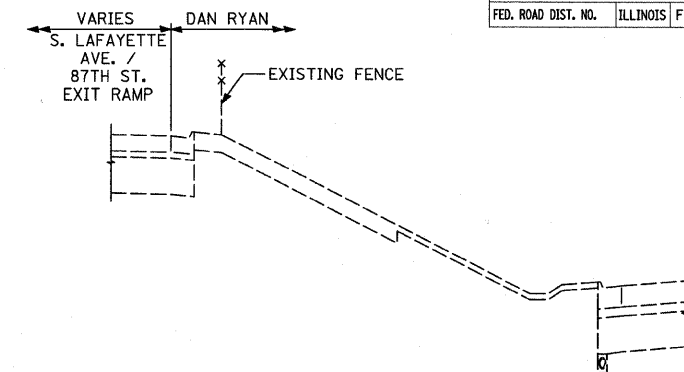
62979



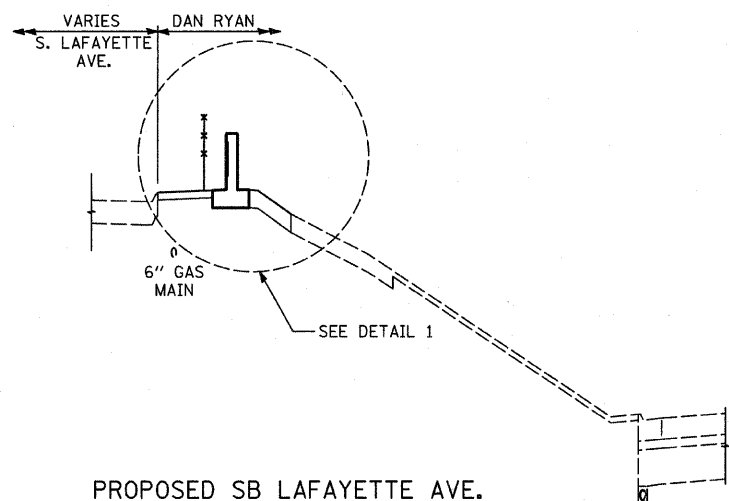
EXISTING SB LAFAYETTE AVE.



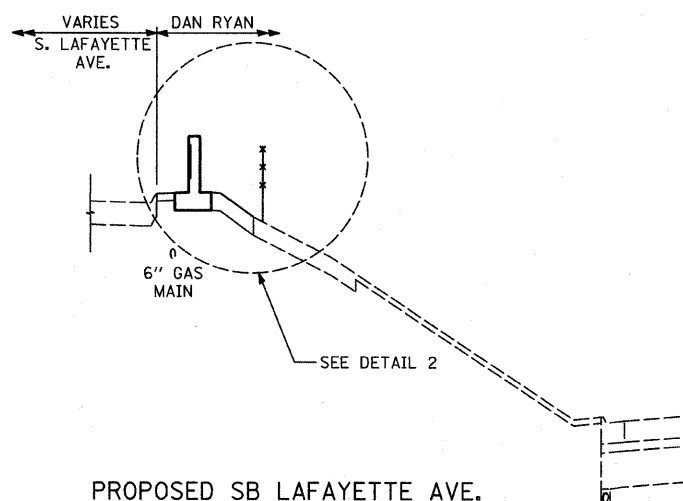
EXISTING SB LAFAYETTE AVE.



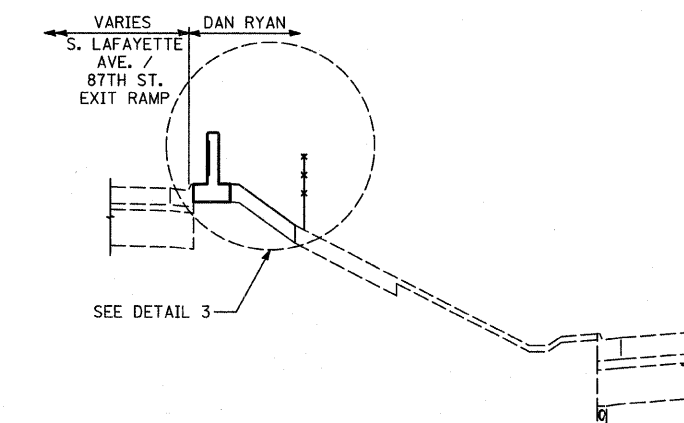
EXISTING 87TH ST. EXIT RAMP



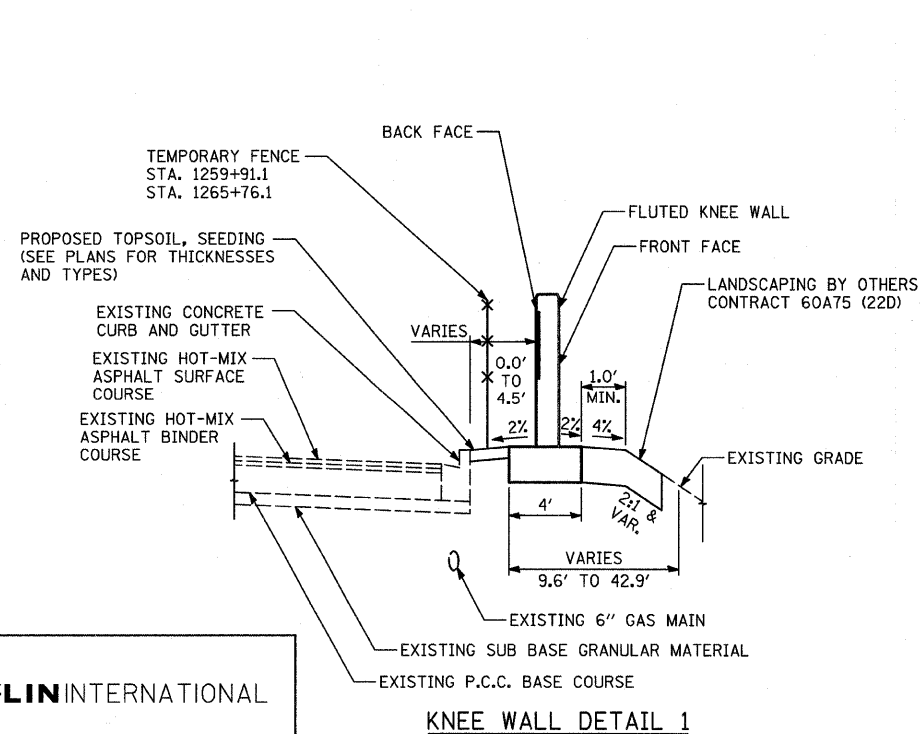
PROPOSED SB LAFAYETTE AVE.
STA. 1259+91.1 TO STA. 1265+76.1
STA. 1265+99.4 TO STA. 1266+73.4



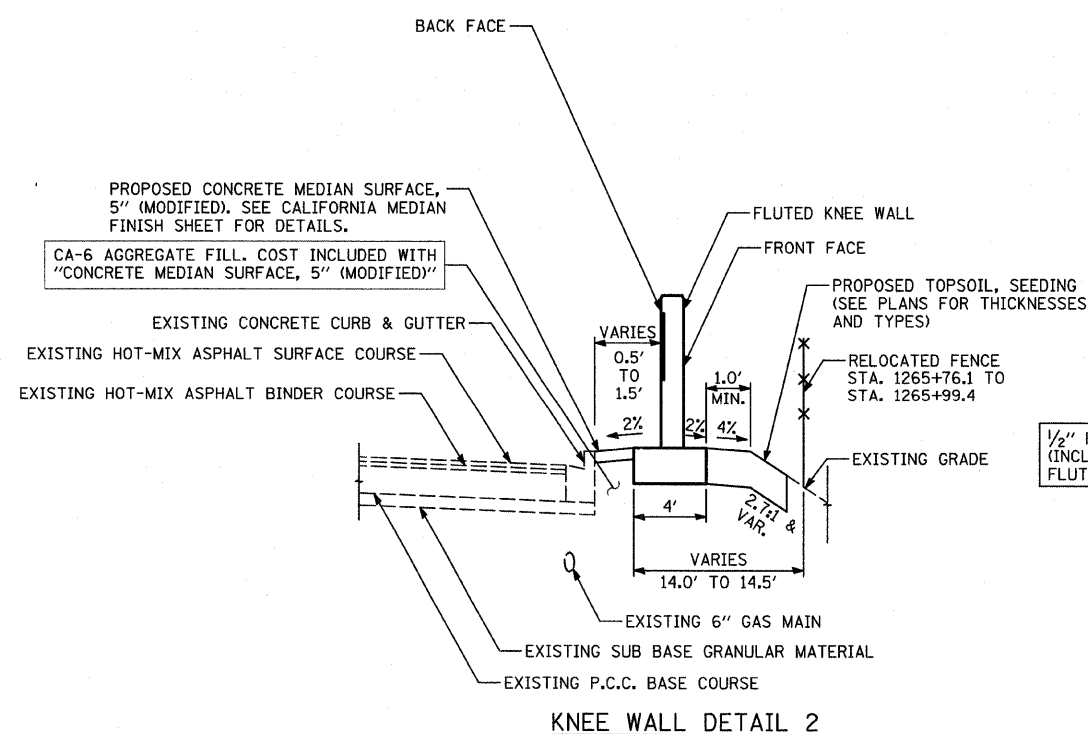
PROPOSED SB LAFAYETTE AVE.
STA. 1265+84.7 TO STA. 1265+99.4



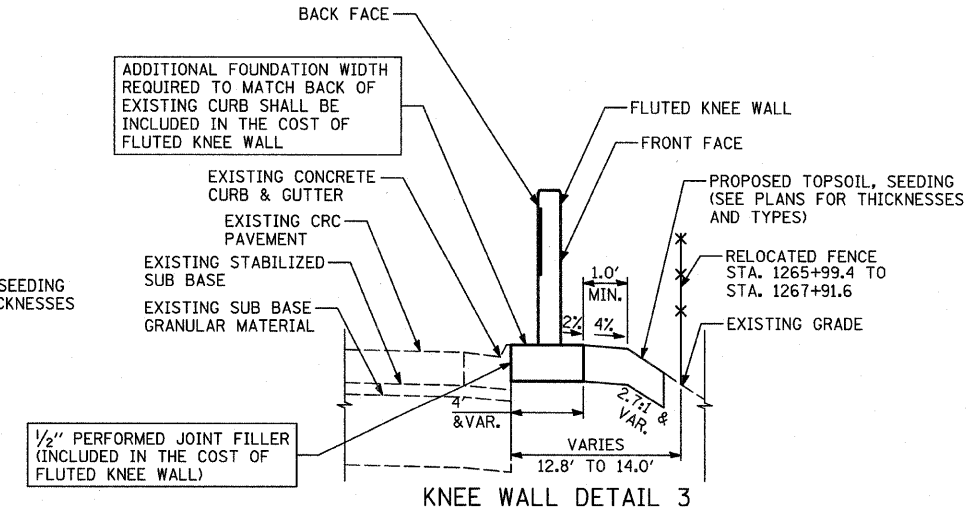
PROPOSED 87TH ST. EXIT RAMP
STA. 1266+73.4 TO STA. 1267+91.6



KNEE WALL DETAIL 1



KNEE WALL DETAIL 2



KNEE WALL DETAIL 3

REVISIONS	
NAME	DATE

ILLINOIS DEPARTMENT OF TRANSPORTATION
F.A.I. 94 (DAN RYAN EXPRESSWAY)
EXISTING AND PROPOSED TYPICAL SECTIONS
SB LAFAYETTE AVE
1 OF 2

SCALE: NONE
DATE: OCTOBER 17, 2008
DRAWN BY: JDF
CHECKED BY: JPM