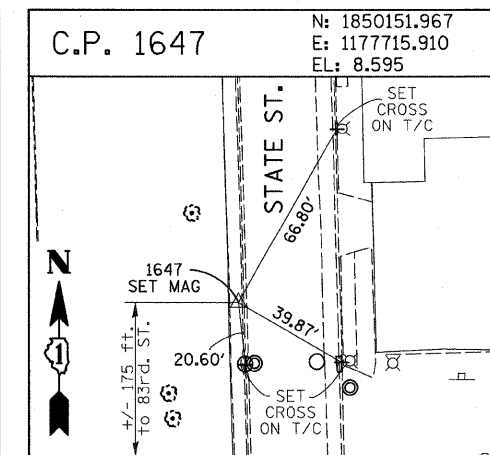
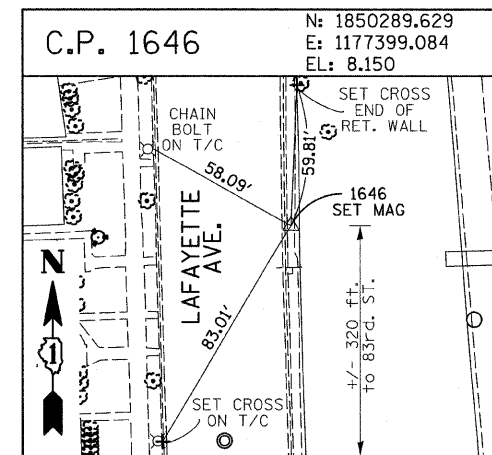
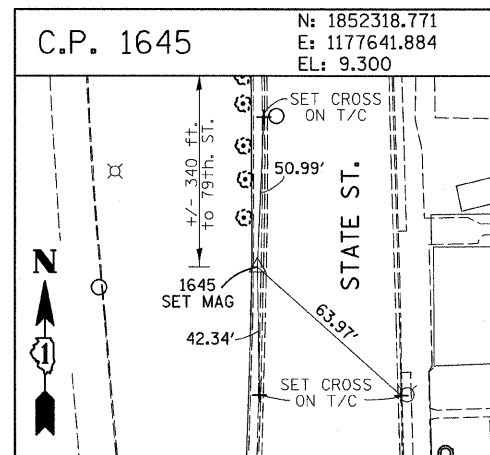
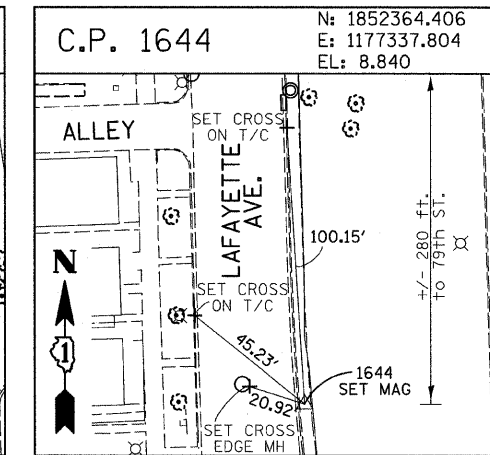
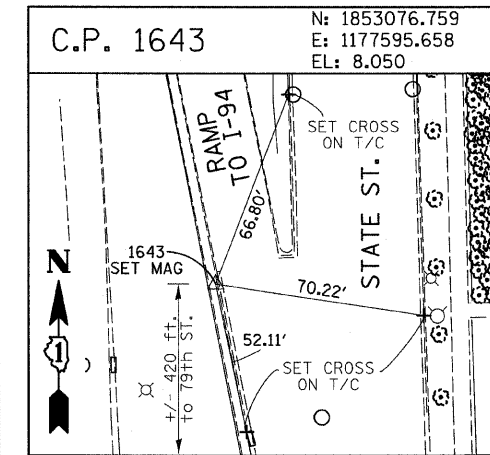
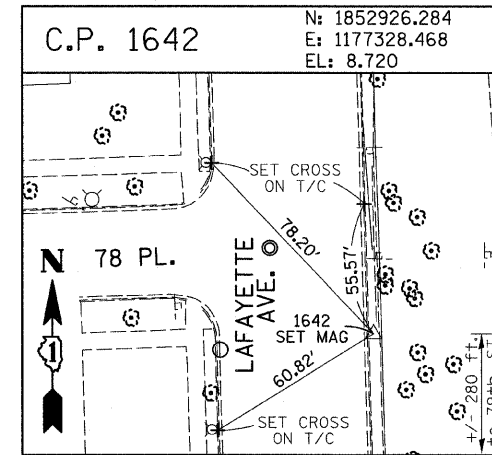
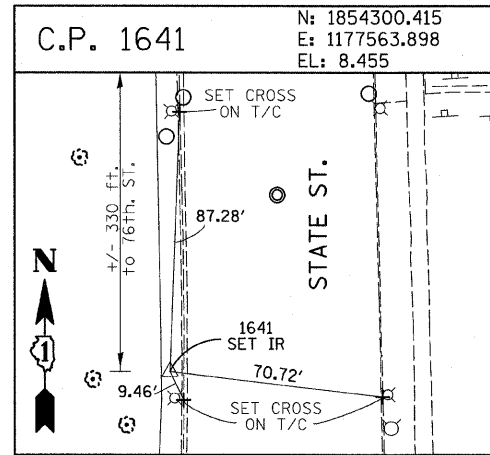
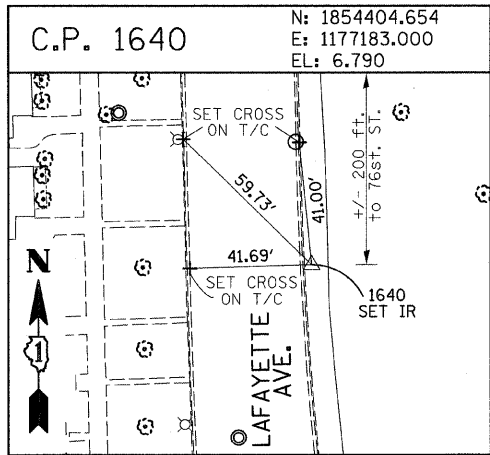
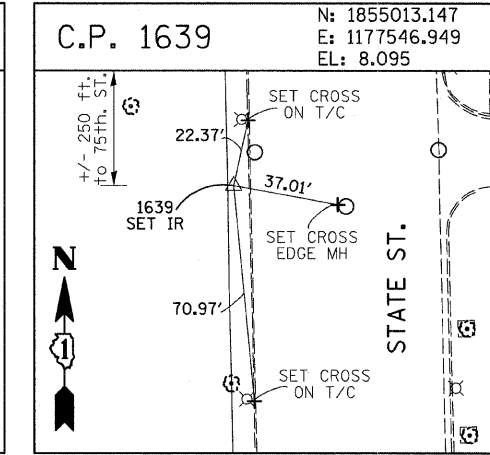
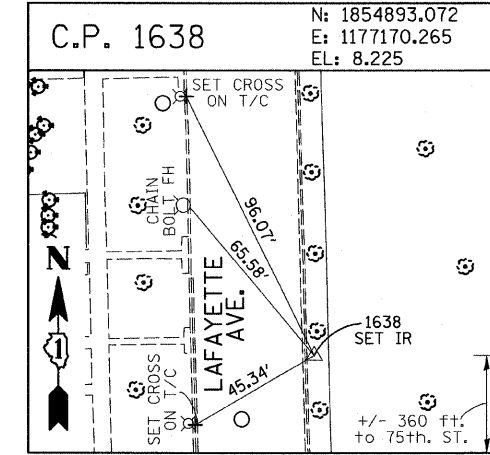
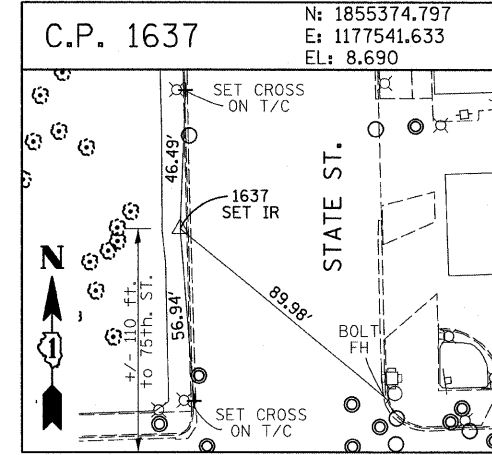
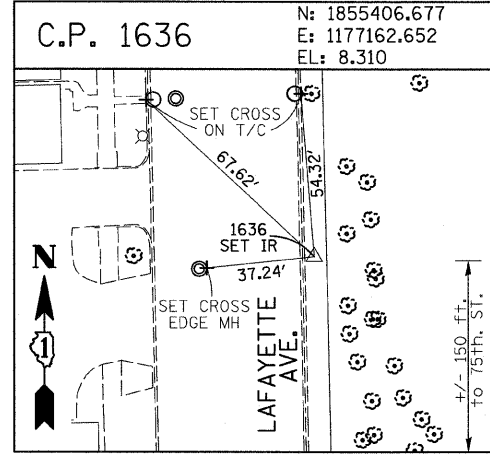
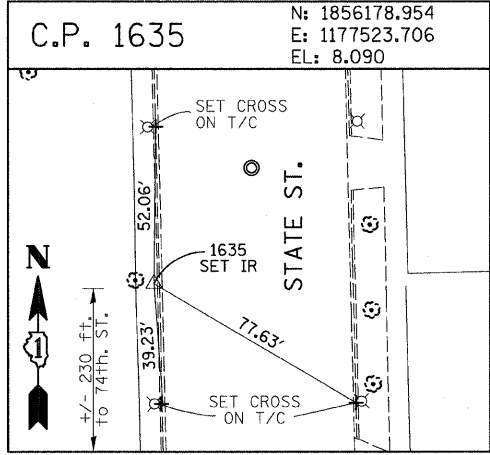
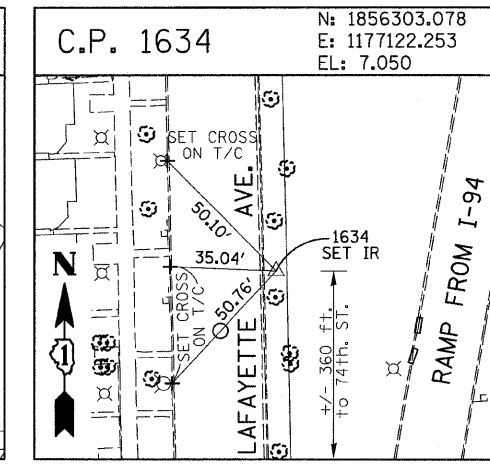
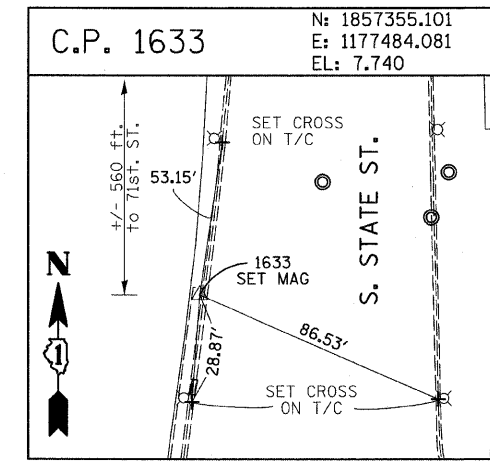
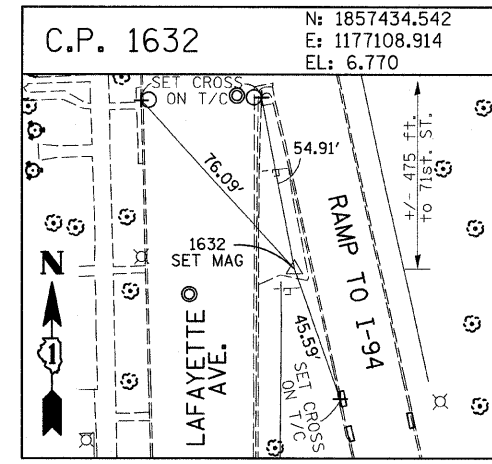
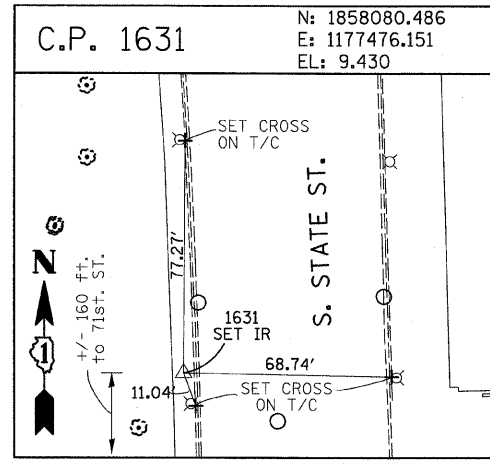
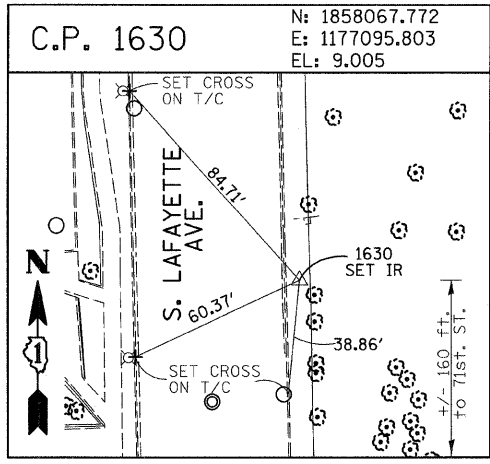


F.A.I. RTE.	SECTION	COUNTY	TOTAL SHEETS	SHEET NO.
94	1717 I-7	COOK	47	12
STA. 1259+91.12		TO STA. 1270+24.39		
FED. ROAD DIST. NO.		ILLINOIS FED. AID PROJECT		
62979				



American Surveying Consultants, P.C.
 1837 Plank St., Suite 200, Chicago, IL 60612
 312-281-2222

REVISIONS	
NAME	DATE

ILLINOIS DEPARTMENT OF TRANSPORTATION
 F.A.I. 94 (DAN RYAN EXPRESSWAY)
 SURVEY TIES FOR CONTROL POINTS
 SHEET 3 OF 7

SCALE: 1"=30'
 DATE: OCTOBER 17, 2008

DRAWN BY: GSP
 CHECKED BY: MMW

10/16/2008 4:06:23 PM P:\02373\road\62979\1265812\3b.dgn