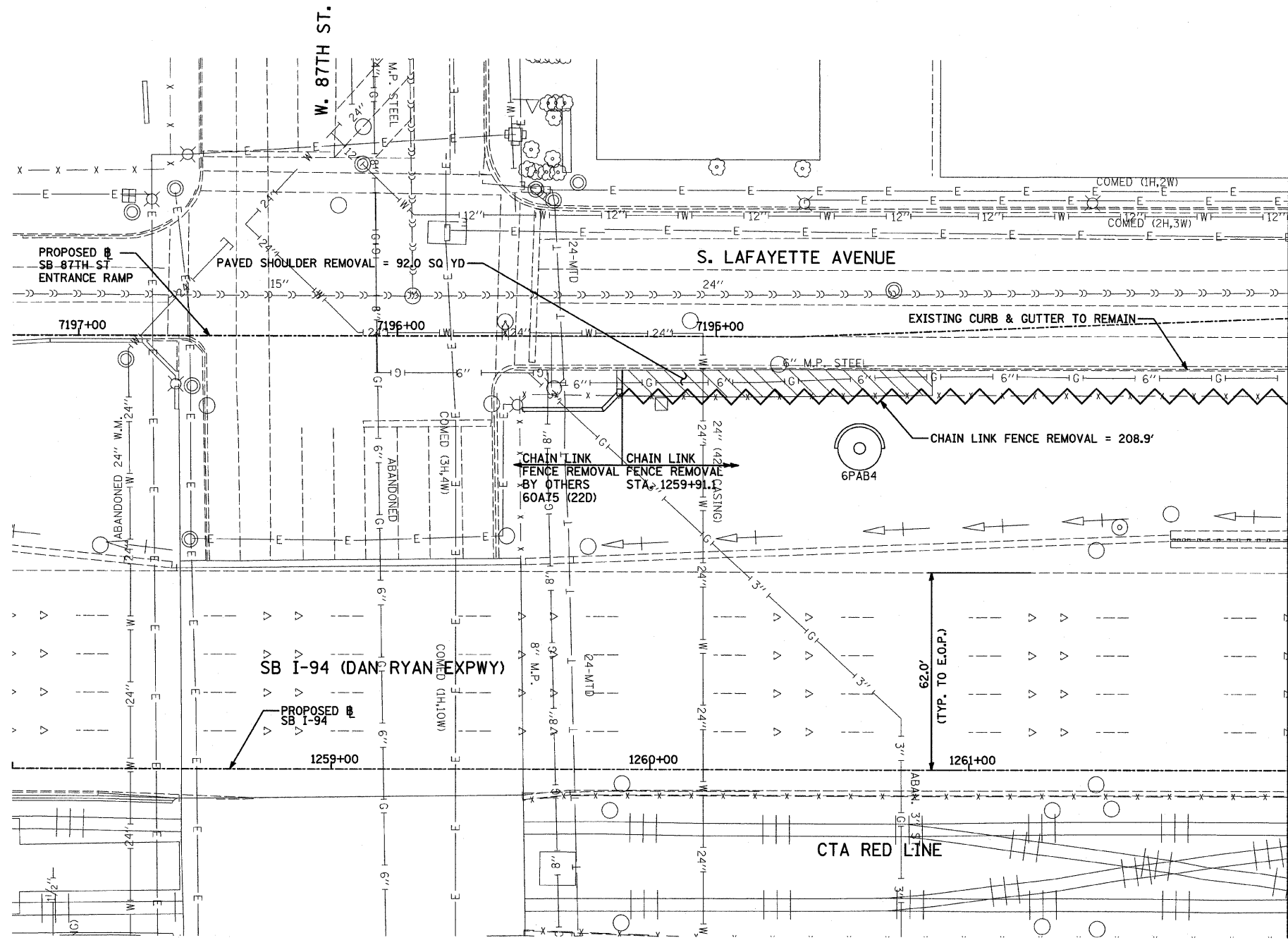
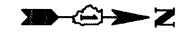
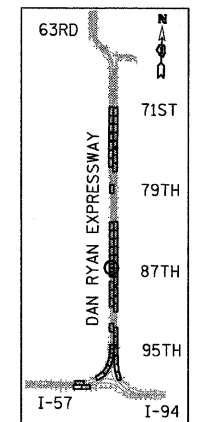


| | | | | |
|---------------------|----------|--------------------|--------------|-----------|
| F.A.I. RTE. | SECTION | COUNTY | TOTAL SHEETS | SHEET NO. |
| 94 | 1717 I-7 | COOK | 47 | 17 |
| STA. 1259+91.12 | | TO STA. 1270+24.39 | | |
| FED. ROAD DIST. NO. | ILLINOIS | FED. AID PROJECT | | |

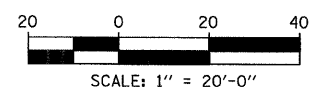
62979



MATCHLINE STA. 1262+00.00



LOCATION MAP



- LEGEND:**
- PAVED SHOULDER REMOVAL
 - COMB CONC CURB & GUTTER REMOVAL
 - CHAIN LINK FENCE REMOVAL
 - CONCRETE BARRIER/GUARDRAIL REMOVAL
 - TREE REMOVAL (UNITS) (NO UNIT SHOWN = <6)

NOTE:
SIGNS SHALL BE RELOCATED AT A MINIMUM OF 3 FEET FROM THE FRONT FACE OF THE PROPOSED KNEE WALL. EXACT PLACEMENT SHALL BE DETERMINED BY THE ENGINEER. PAID FOR AS "RELOCATE EXISTING SIGN PANEL, SPECIAL".

TYLIN INTERNATIONAL

| REVISIONS | |
|-----------|------|
| NAME | DATE |
| | |
| | |
| | |
| | |
| | |
| | |
| | |
| | |
| | |

ILLINOIS DEPARTMENT OF TRANSPORTATION
F.A.I. 94 (DAN RYAN EXPRESSWAY)
REMOVAL PLAN
SB I-94 (DAN RYAN EXPRESSWAY)
STA. 1258+00.00 TO STA. 1262+00.00

SCALE: 1"=20'
 DATE: OCTOBER 17, 2008

DRAWN BY: JDF
 CHECKED BY: JPM

D:\02373\road\266\p66s10_3.dwg 4/16/2008 4:05:33 PM