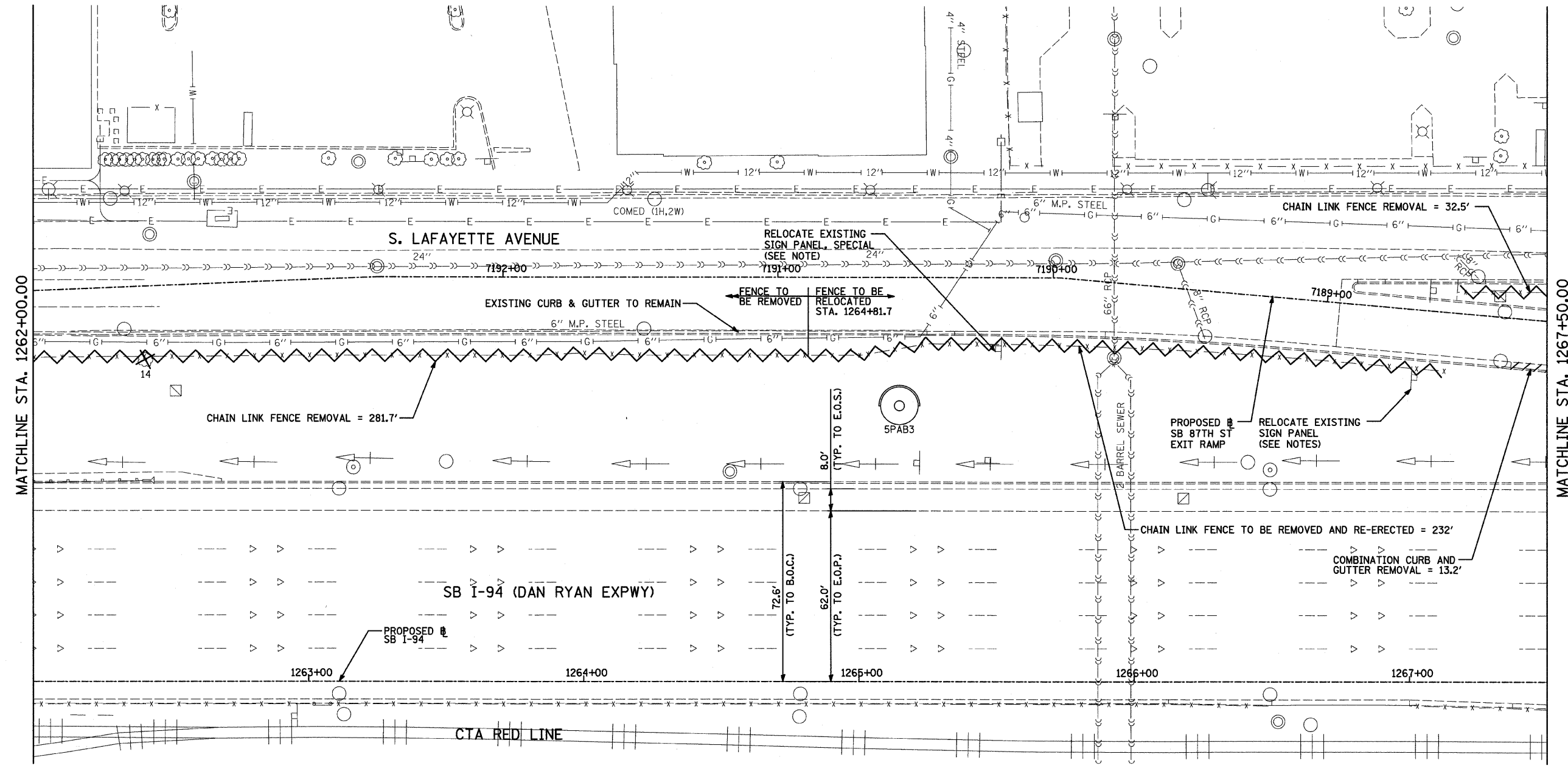
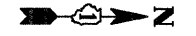


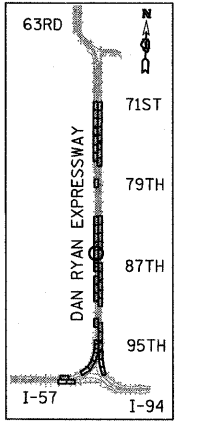
F.A.I. RTE.	SECTION	COUNTY	TOTAL SHEETS	SHEET NO.
94	1717 I-7	COOK	47	19
STA. 1259+91.12		TO STA. 1270+24.39		
FED. ROAD DIST. NO.	ILLINOIS	FED. AID PROJECT		

62979

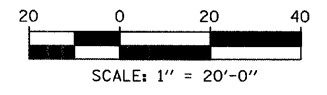


MATCHLINE STA. 1267+50.00

MATCHLINE STA. 1262+00.00



LOCATION MAP



- LEGEND:**
- PAVED SHOULDER REMOVAL
  - COMB CONC CURB & GUTTER REMOVAL
  - CHAIN LINK FENCE REMOVAL
  - CONCRETE BARRIER/GUARDRAIL REMOVAL
  - TREE REMOVAL (UNITS) (NO UNIT SHOWN = <6)

**NOTE:**  
 SIGNS SHALL BE RELOCATED AT A MINIMUM OF 3 FEET FROM THE FRONT FACE OF THE PROPOSED KNEE WALL. EXACT PLACEMENT SHALL BE DETERMINED BY THE ENGINEER. PAID FOR AS "RELOCATE EXISTING SIGN PANEL, SPECIAL".

REVISIONS	
NAME	DATE

ILLINOIS DEPARTMENT OF TRANSPORTATION  
 F.A.I. 94 (DAN RYAN EXPRESSWAY)  
 REMOVAL PLAN  
 SB I-94 (DAN RYAN EXPRESSWAY)  
 STA. 1262+00.00 TO STA. 1267+50.00

SCALE: 1"=20'  
 DATE: OCTOBER 17, 2008

DRAWN BY: JDF  
 CHECKED BY: JPM

**TYLIN** INTERNATIONAL

10/16/2008 4:06:40 PM