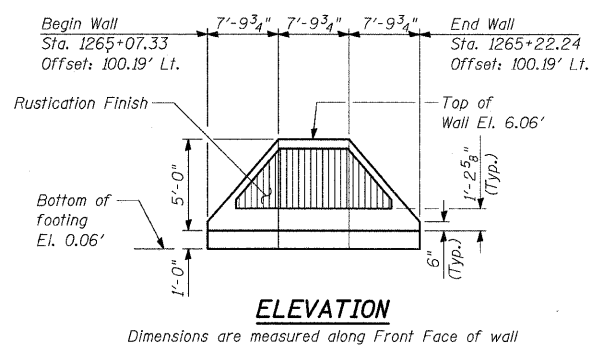


F.A.I. RTE.	SECTION	COUNTY	TOTAL SHEETS	SHEET NO.
94	1717 I-7	COOK	47	23
STA. 1259+91.12		TO STA. 1270+24.39		
FED. ROAD DIST. NO.		ILLINOIS	FED. AID PROJECT	

62979

GENERAL NOTES:

1. Reinforcement bars shall conform to the requirements of AASHTO M31 or M322 Grade 60.
2. Plan dimensions and details relative to existing structure have been taken from existing plans and are subject to nominal construction variations. It shall be the Contractor's responsibility to verify such dimensions and details in the field and make necessary approved adjustments prior to construction or ordering of materials. Such variations shall not be cause for additional compensation for a change in the scope of the work. However, the Contractor will be paid for the quantity actually furnished at the unit price bid for the work.
3. All exposed concrete edges shall be chamfered 3/4" except as noted.
4. Protective Coat shall be applied according to Section 503.19 of the Standard Specifications to all concrete surfaces not in contact with soil for the typical section of the retaining wall.
5. The exposed top of the footing shall be broom finished.
6. All construction joints shall be bonded.
7. All elevations shown are based on the Chicago City Datum of 0.00, which is 579.19 feet above mean tide New York. (NAVD 88)
8. The Contractor is responsible to coordinate all electrical crossings with this Contract and with Contract 62583.



DESIGN SPECIFICATION

AASHTO 2002 Standard Specifications for Highway Bridges

DESIGN STRESSES

FIELD UNITS

$f'_c = 3,500$ psi
 $f_y = 60,000$ psi (Reinforcement)

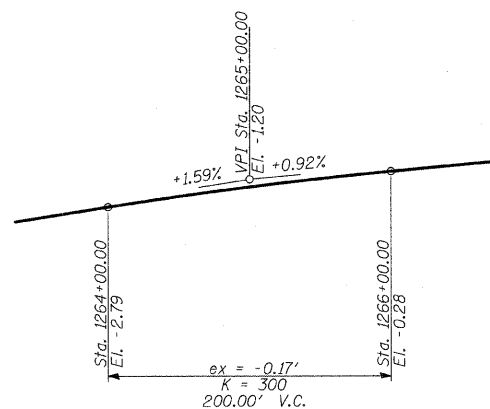
LOADING

Maximum soil pressure under knee wall is 1,550 psf.

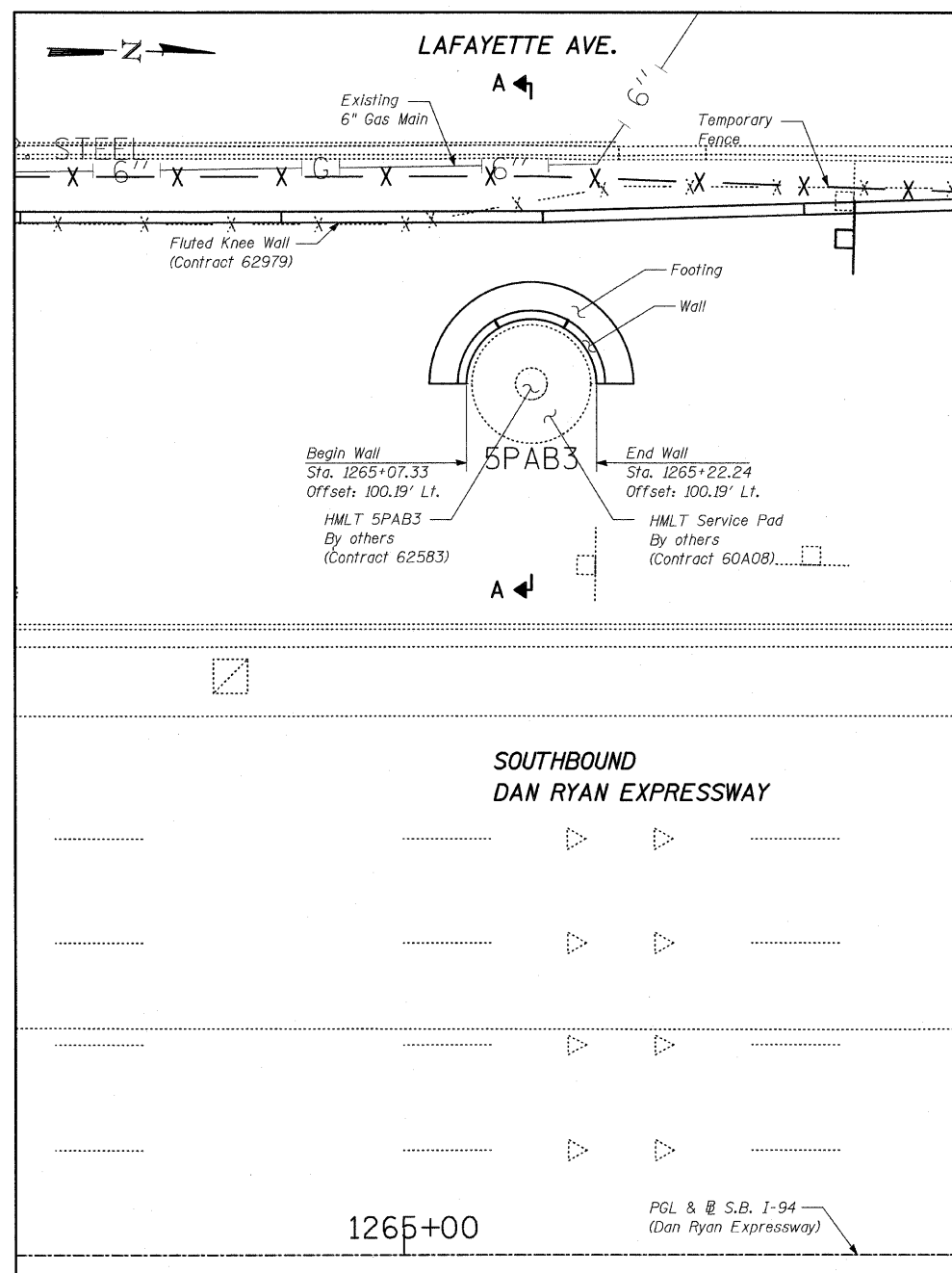
BILL OF MATERIAL

ITEM	UNIT	TOTAL
Porous Granular Embankment	CU YD	41
Structure Excavation	CU YD	12
Concrete Structures	CU YD	9
Protective Coat	SQ YD	11
Rustication Finish	SQ FT	43
Reinforcement Bars, Epoxy Coated	POUND	1,030

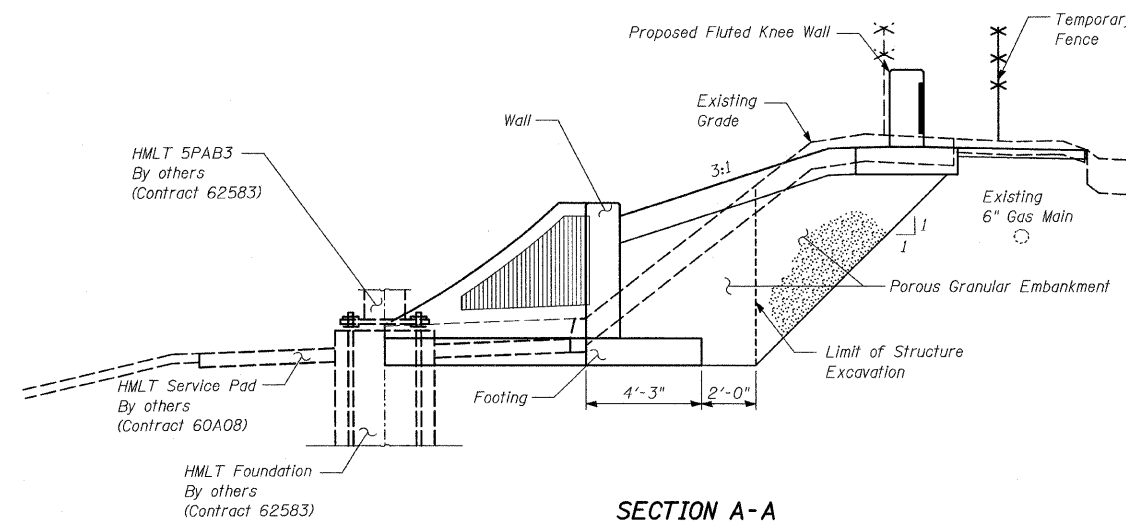
* See Sheet 2 of 2 for Bar Diagram



PROFILE GRADE
(Southbound I-94)



PLAN



SECTION A-A

Dimensions are measured along Front Face of wall at H.M.L.T. 5PAB3

SHEET 1 OF 2

REVISIONS	
NAME	DATE

ILLINOIS DEPARTMENT OF TRANSPORTATION
 F.A.I. 94 (DAN RYAN EXPRESSWAY)
 HIGH MAST LIGHT TOWER RETAINING WALL,
 SPECIAL DETAILS (1 OF 2)

S.N. DESIGNED BY: MAF
 SCALE: DRAWN BY: MAF
 DATE: OCTOBER 17, 2008 CHECKED BY: PF

P: 02/27/08; Structure: 62979; 446:51/PM 10/16/2008