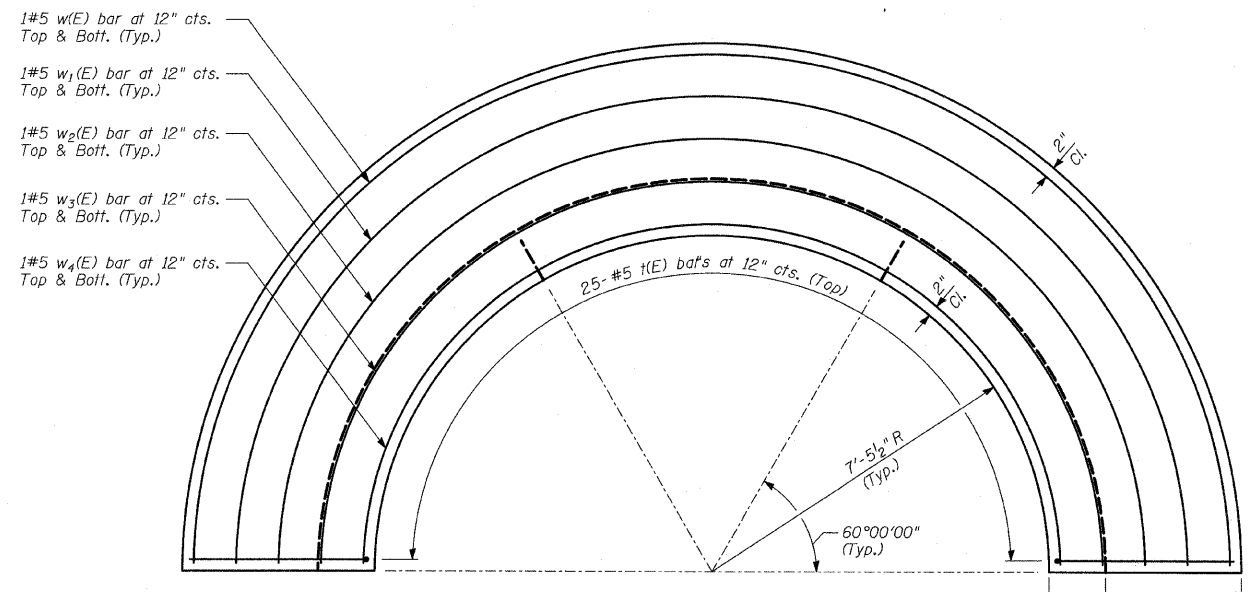


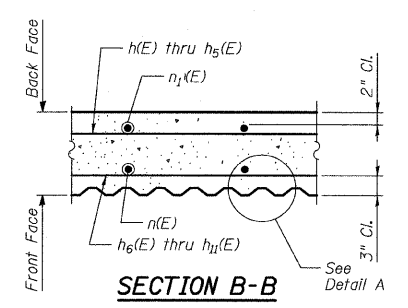
**ELEVATION**  
(Dimensions are measured along the Front Face of wall)



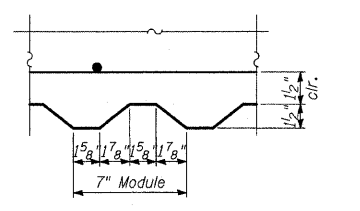
**PLAN**  
(At Footing Level)

**LEGEND**

- \* Cut bars to fit in field.
- F.F. - Denotes Front Face.
- B.F. - Denotes Back Face.



**SECTION B-B**

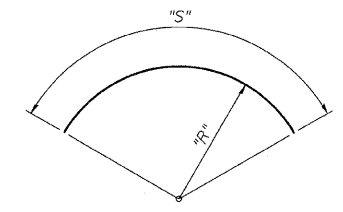


**DETAIL A**

**MARK TABLE**

Bar	A	B
n(E)	4'-6"	3'-9"
n1(E)	4'-6"	11"
h(E)	3'-11"	7"

**BARS n(E), n1(E) & h(E)**



Bar	"R"	"S"
h(E)	7'-8 1/2"	23'-11"
h1(E)	7'-8 1/2"	21'-10"
h2(E)	7'-8 1/2"	18'-7"
h3(E)	7'-8 1/2"	15'-4"
h4(E)	7'-8 1/2"	12'-1"
h5(E)	7'-8 1/2"	8'-10"
h6(E)	8'-5 3/4"	26'-4"
h7(E)	8'-5 3/4"	24'-0"
h8(E)	8'-5 3/4"	20'-5"
h9(E)	8'-5 3/4"	16'-10"
h10(E)	8'-5 3/4"	13'-3"
h11(E)	8'-5 3/4"	9'-9"
w(E)	11'-6 1/2"	35'-11"
w1(E)	10'-7 1/8"	32'-11"
w2(E)	9'-7 1/2"	29'-11"
w3(E)	8'-7 1/8"	26'-10"
w4(E)	7'-8 1/4"	23'-10"

Note: "R" and "S" measured along bar @  
**BARS h(E) thru h11(E) & w(E) thru w4(E)**

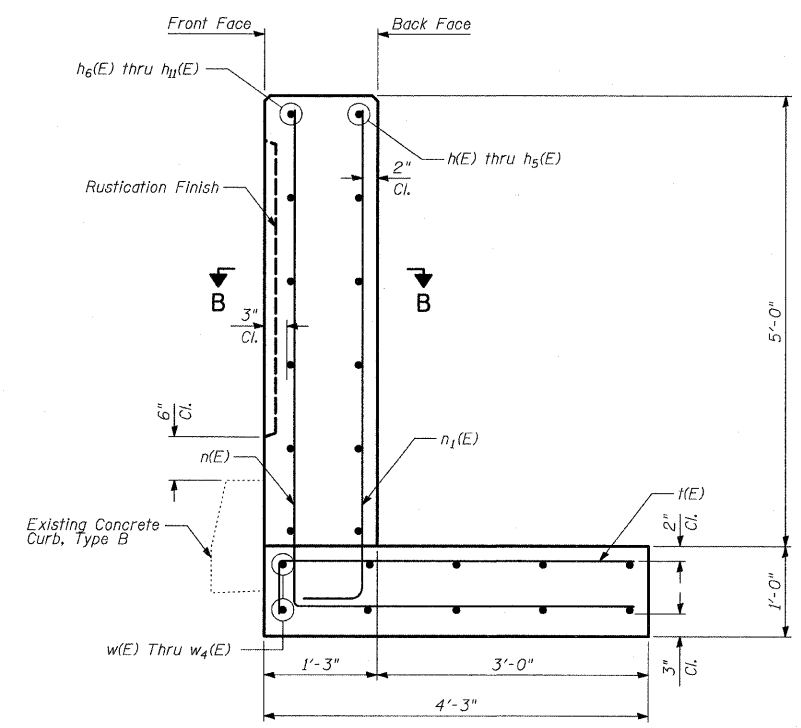
**BILL OF MATERIAL**

Bar	No.	Size	Length	Shape
h(E)	1	#5	23'-11"	( )
h1(E)	1	#5	21'-10"	( )
h2(E)	1	#5	18'-7"	( )
h3(E)	1	#5	15'-4"	( )
h4(E)	1	#5	12'-1"	( )
h5(E)	1	#5	8'-10"	( )
h6(E)	1	#4	26'-4"	( )
h7(E)	1	#4	24'-0"	( )
h8(E)	1	#4	20'-5"	( )
h9(E)	1	#4	16'-10"	( )
h10(E)	1	#4	13'-3"	( )
h11(E)	1	#4	9'-9"	( )
n(E)	25	#5	8'-3"	( )
n1(E)	25	#6	5'-5"	( )
h(E)	25	#5	4'-6"	( )
w(E)	2	#5	35'-11"	( )
w1(E)	2	#5	32'-11"	( )
w2(E)	2	#5	29'-11"	( )
w3(E)	2	#5	26'-10"	( )
w4(E)	2	#5	23'-10"	( )

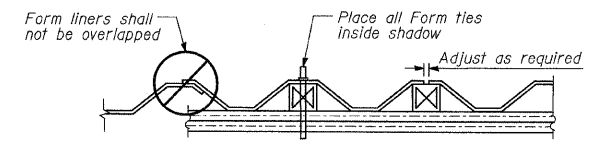
Reinforcement bars designated (E) shall be epoxy coated.

**NOTES:**

1. T/Wall slope is constant along the arc of any given radius.
2. Place horizontal tails of n(E) & n1(E) bars radially.



**TYPICAL SECTION**



**SUGGESTED FORMWORK DETAIL**

**TYLIN INTERNATIONAL**

**REVISIONS**

NAME	DATE

SHEET 2 OF 2

ILLINOIS DEPARTMENT OF TRANSPORTATION  
F.A.I. 94 (DAN RYAN EXPRESSWAY)  
HIGH MAST LIGHT TOWER RETAINING WALL,  
SPECIAL DETAILS (2 OF 2)

S.N. DESIGNED BY: MAF  
SCALE: DRAWN BY: MAF  
DATE: OCTOBER 17, 2008 CHECKED BY: PF