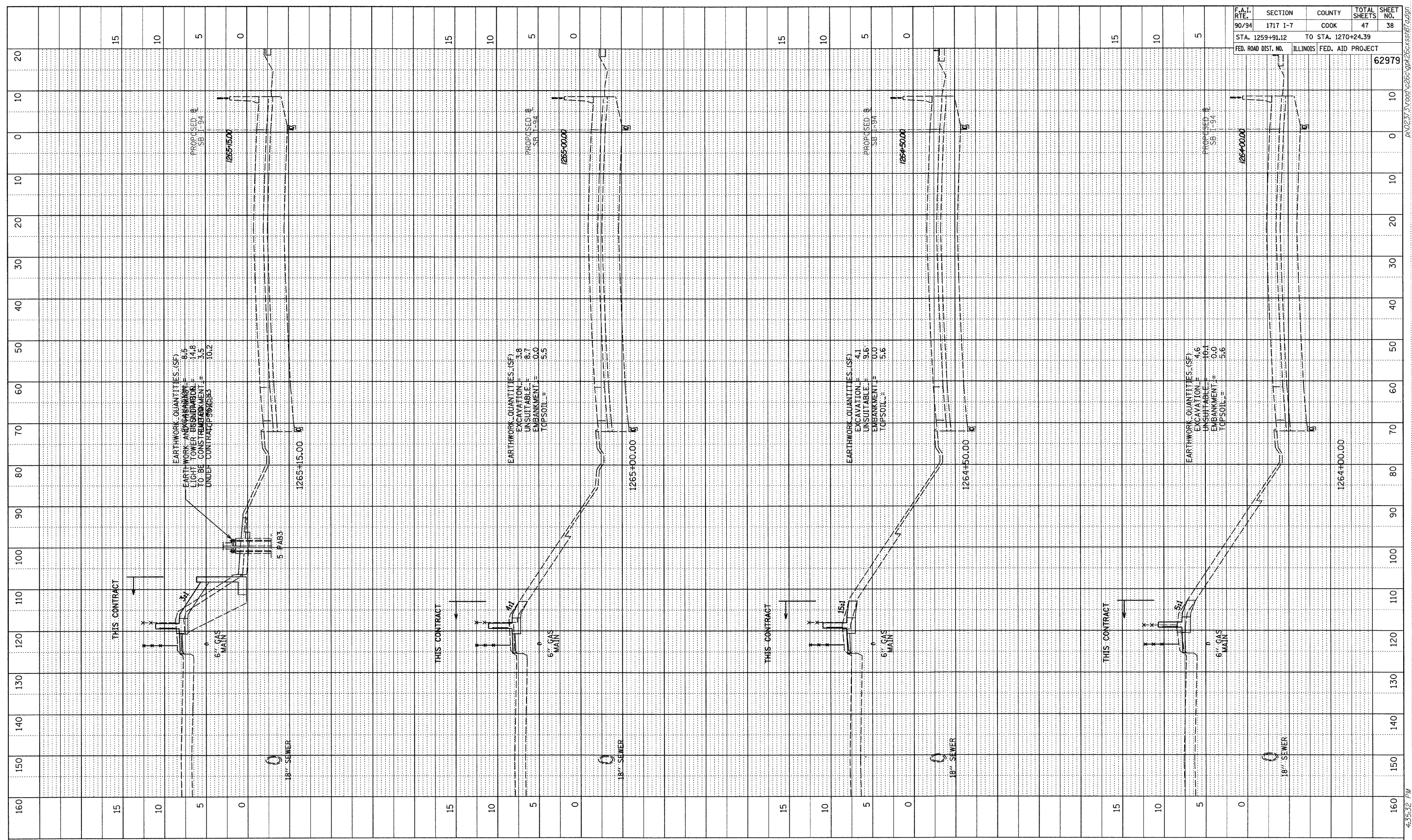
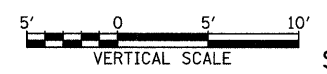
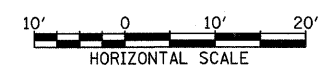


PROFILE SURVEYED BY DATE
 GRADES CHECKED
 NOTE BOOK NO. NOTED
 STRUCTURE NOTATIONS CHRD



F.A.I. RTE.	SECTION	COUNTY	TOTAL SHEETS	SHEET NO.
90/94	1717 I-7	COOK	47	38
STA. 1259+91.12		TO STA. 1270+24.39		
FED. ROAD DIST. NO.	ILLINOIS	FED. AID PROJECT		
				62979

TYLIN INTERNATIONAL



SB I-94 (DAN RYAN EXPRESSWAY)
 STA. 1264+00.00 TO STA. 1264+15.00

10/16/2008 4:35:32 PM P:\02313\Road\c26c\gpk26c\ss187.dgn