

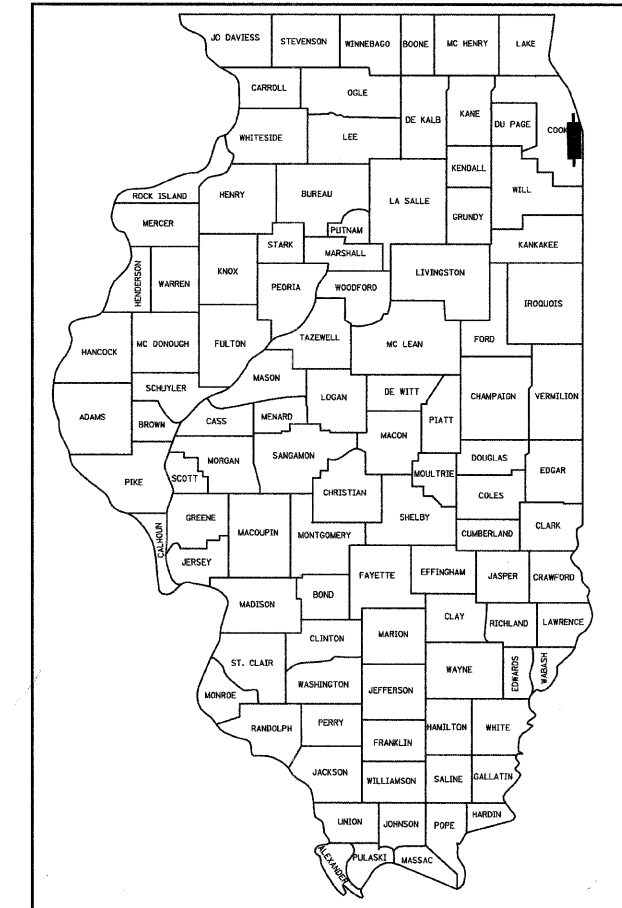
F.A.I. RTE.	SECTION	COUNTY	TOTAL SHEETS	SHEET NO.
90/94		COOK	31	1

• (1919.15 & 2021-922 PT1) I **62985**

**STATE OF ILLINOIS
DEPARTMENT OF TRANSPORTATION
DIVISION OF HIGHWAYS**

**PLANS FOR PROPOSED
FEDERAL AID HIGHWAY**

**F.A.I. ROUTE 94 (DAN RYAN EXPRESSWAY)
SECTION (1919.15 & 2021-922 PT1) I
INSTALLATION OF FLUTED KNEE WALL ALONG WENTWORTH AVENUE
AND WELLS STREET FROM 375- FEET SOUTH OF 63rd STREET TO 62nd STREET
COOK COUNTY
C-91-243-05**



LOCATION OF SECTION INDICATED THUS: - ■ -

INDEX OF SHEETS

SHEET	DESCRIPTION
1	COVER SHEET, INDEX OF SHEETS, LIST OF ILLINOIS DOT HIGHWAY STANDARDS
2	GENERAL NOTES AND PROJECT COMMITMENTS
3	SUMMARY OF QUANTITIES
4	EXISTING AND PROPOSED TYPICAL SECTIONS
5-13	ALIGNMENT PLANS, SURVEY TIES AND CONTROL POINTS
14-18	EXISTING AND PROPOSED ROADWAY PLANS
19-20	ROADWAY DETAILS
21-22	ELECTRICAL PLANS AND DETAIL
23-27	STRUCTURAL DETAILS
28	TC-10 DISTRICT 1, TRAFFIC CONTROL & PROTECTION FOR SIDE ROADS, INTERSECTIONS AND DRIVEWAYS
29	TC-17 DISTRICT 1, TRAFFIC CONTROL FOR SHOULDER CLOSURES AND PARTIAL RAMP CLOSURES
30	TC-18 DISTRICT 1, SIGNING FOR FLAGGING OPERATIONS AT WORK ZONE OPENINGS
31	TC-22 DISTRICT 1, ARTERIAL ROAD INFORMATION SIGN

DESIGN NUMBER

D-91-243-05

IDOT HIGHWAY STANDARDS

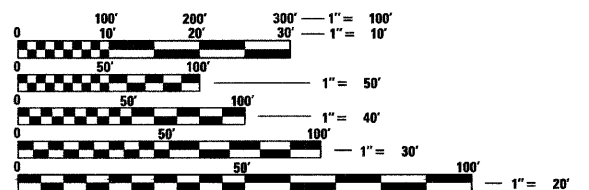
STANDARD	DESCRIPTION
000001-05	STANDARD SYMBOLS, ABBREVIATIONS, AND PATTERNS
001001-02	AREAS OF REINFORCEMENT BARS
001006	DECIMAL OF AN INCH AND OF A FOOT
664001-02	CHAIN LINK FENCE
701601-06	URBAN LANE CLOSURE, MULTILANE, 1W OR 2W WITH NONTRAVERSABLE MEDIAN
701701-06	URBAN LANE CLOSURE, MULTILANE INTERSECTION
701801-04	LANE CLOSURE MULTILANE 1W OR 2W CROSSWALK OR SIDEWALK CLOSURE
701901-01	TRAFFIC CONTROL DEVICES
720001-01	SIGN PANEL MOUNTING DETAILS
720006-02	SIGN PANEL ERECTION DETAILS

PROJECT LOCATED IN CITY OF CHICAGO

DESIGN DESIGNATION

WENTWORTH AVE: 6259 (20) URBAN COLLECTOR
WELLS ST: 8275 (20) URBAN COLLECTOR

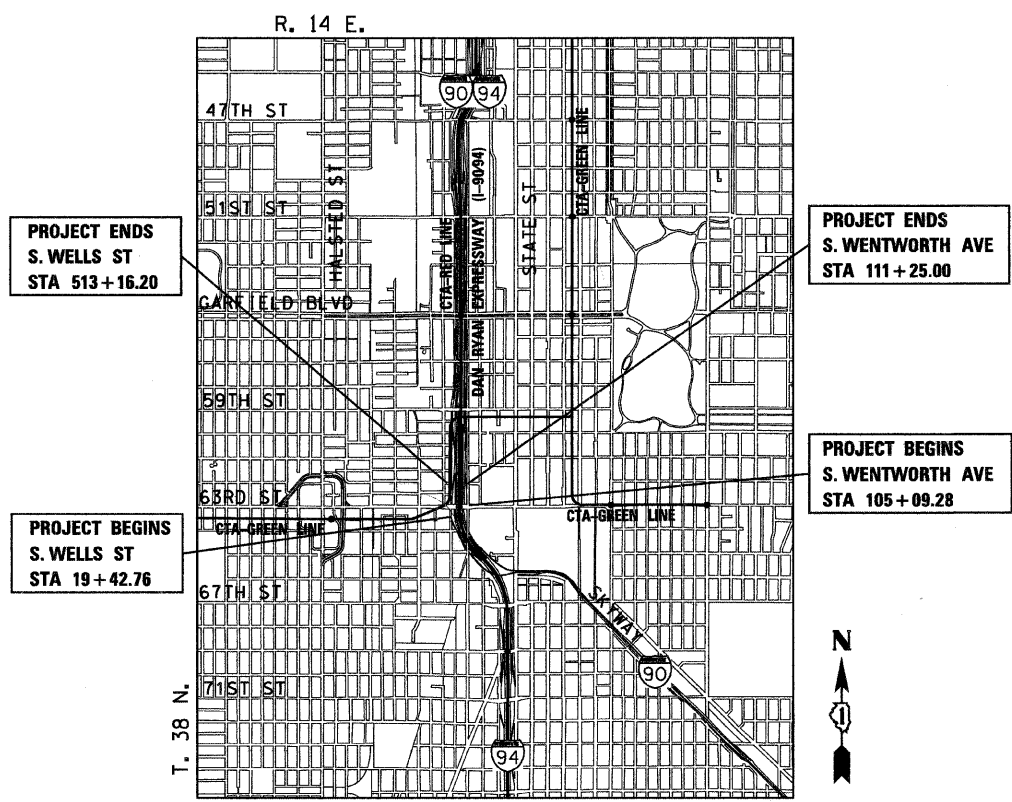
FRONTAGE ROADS:	ADT	DESIGN SPEED	POSTED (2020) SPEED
WENTWORTH AVE	11,000	30	25
WELLS ST	15,000	30	25



FULL SIZE PLANS HAVE BEEN PREPARED USING STANDARD ENGINEERING SCALES. REDUCED SIZED PLANS WILL NOT CONFORM TO STANDARD SCALES. IN MAKING MEASUREMENTS ON REDUCED PLANS, THE ABOVE SCALES MAY BE USED.

DIGGER:
CHICAGO UTILITY ALERT NETWORK
(312) 744-7000

CONTRACT NO. 62985



LOCATION MAP

GROSS LENGTH OF PROJECT = 1,529 FT (0.290 MILES)
NET LENGTH OF PROJECT = 1,529 FT (0.290 MILES)

STATE OF ILLINOIS
DEPARTMENT OF TRANSPORTATION
DIVISION OF HIGHWAYS

SUBMITTED JANUARY 8, 2009

Diana M. O'Keefe 98
DEPUTY DIRECTOR OF HIGHWAYS, REGION ENGINEER

May 8, 2009
Charles J. Jones RD
ENGINEER OF DESIGN AND ENVIRONMENT

May 8, 2009
Christine M. Reed RD
DIRECTOR OF HIGHWAYS, CHIEF ENGINEER



Robert M. Goveia
ROBERT M. GOVEIA

11/30/2009 01/00/2009
EXPIRES DATE

**PRINTED BY THE AUTHORITY
OF THE STATE OF ILLINOIS**

AECOM

DISTRICT ONE DESIGNCONSULTANT SERVICES PROJECT MANAGER
RAJENDRA SHAH (847) 705-4555