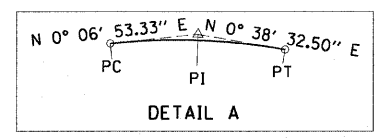
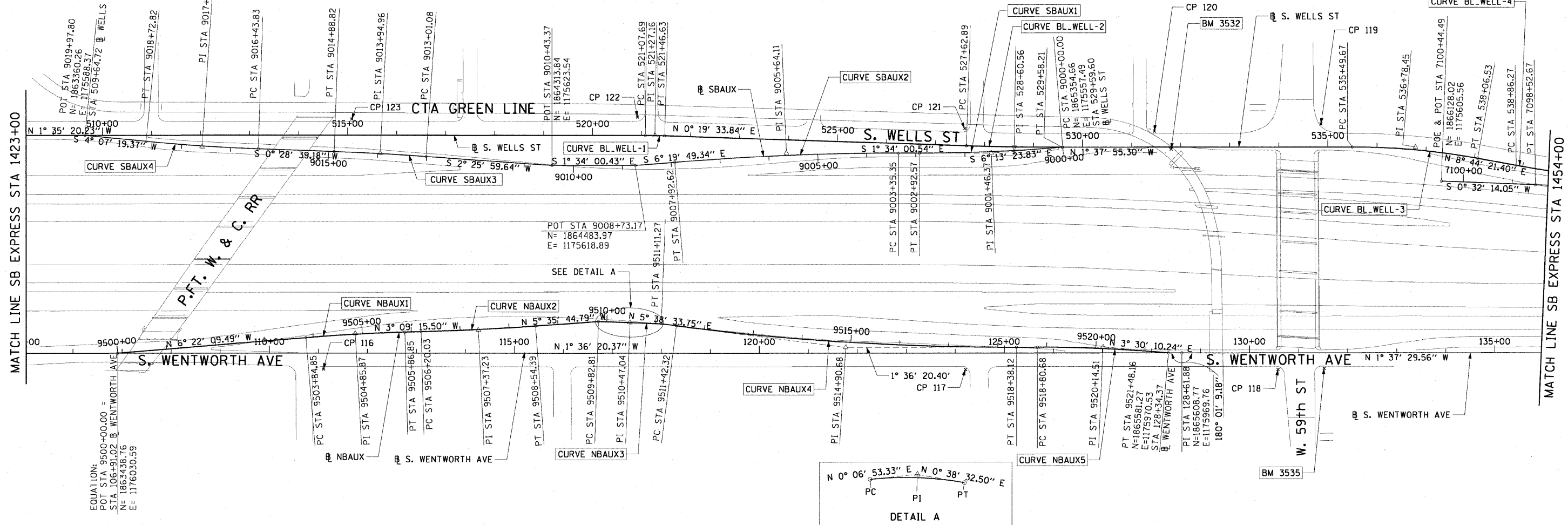


F.A.I. RTE. 90/94	SECTION	COUNTY COOK	TOTAL SHEETS 31	SHEET NO. 6
STA.		TO STA.		
FED. ROAD DIST. NO. 1		ILLINOIS		FED. AID PROJECT
(1919.15 & 2021-922 PT) I		62985		



CURVE SBAUX1	CURVE SBAUX2	CURVE SBAUX3	CURVE SBAUX4
P.I. STA= 9001+46.37 N= 1,865,209.16 E= 1,175,573.36 Δ= 4° 39' 23" D= 1° 35' 30" R= 3600.00' T= 146.37' L= 292.57' E= 2.97' e= N/A T.R.= N/A S.E. RUN= N/A P.C. STA= 9000+00.00 N= 1,865,354.66 E= 1,175,557.49 P.T. STA= 9002+92.57 N= 1,865,062.84 E= 1,175,577.36	P.I. STA= 9005+64.11 N= 1,864,791.41 E= 1,175,584.78 Δ= 4° 45' 49" D= 1° 02' 30" R= 5500.00' T= 228.77' L= 457.27' E= 4.76' e= N/A T.R.= N/A S.E. RUN= N/A P.C. STA= 9003+35.35 N= 1,865,020.09 E= 1,175,578.53 P.T. STA= 9007+92.62 N= 1,864,564.03 E= 1,175,610.01	P.I. STA= 9013+94.96 N= 1,863,962.56 E= 1,175,608.62 Δ= 1° 57' 20" D= 1° 02' 30" R= 5500.00' T= 93.88' L= 187.72' E= 0.80' e= N/A T.R.= N/A S.E. RUN= N/A P.C. STA= 9013+01.08 N= 1,864,056.35 E= 1,175,612.60 P.T. STA= 9014+88.82 N= 1,863,868.69 E= 1,175,607.83	P.I. STA= 9017+58.36 N= 1,863,599.16 E= 1,175,605.59 Δ= 3° 38' 40" D= 1° 35' 30" R= 3600.00' T= 114.53' L= 228.99' E= 1.82' e= N/A T.R.= N/A S.E. RUN= N/A P.C. STA= 9016+43.83 N= 1,863,713.69 E= 1,175,606.54 P.T. STA= 9018+72.82 N= 1,863,484.92 E= 1,175,597.35



CURVE NBAUX1	CURVE NBAUX2	CURVE NBAUX3	CURVE NBAUX4	CURVE NBAUX5	CURVE BL_WELL-1	CURVE BL_WELL-2	CURVE BL_WELL-3
P.I. STA= 9504+85.87 N= 1,863,921.64 E= 1,175,976.69 Δ= 3° 12' 54" D= 1° 35' 30" R= 3600.00' T= 101.03' L= 202.00' E= 1.42' e= N/A T.R.= N/A S.E. RUN= N/A P.C. STA= 9503+84.85 N= 1,863,821.23 E= 1,175,987.89 P.T. STA= 9505+86.85 N= 1,864,022.51 E= 1,175,971.13	P.I. STA= 9507+37.23 N= 1,864,172.66 E= 1,175,962.85 Δ= 2° 26' 29" D= 1° 02' 30" R= 5500.00' T= 117.20' L= 234.36' E= 1.25' e= N/A T.R.= N/A S.E. RUN= N/A P.C. STA= 9506+20.03 N= 1,864,055.64 E= 1,175,969.30 P.T. STA= 9508+54.39 N= 1,864,289.30 E= 1,175,951.42	P.I. STA= 9510+47.04 N= 1,864,481.34 E= 1,175,939.03 Δ= 0° 31' 39" D= 0° 24' 38" R= 13952.00' T= 64.23' L= 128.46' E= 0.15' e= N/A T.R.= N/A S.E. RUN= N/A P.C. STA= 9509+82.81 N= 1,864,417.11 E= 1,175,938.90 P.T. STA= 9511+11.27 N= 1,864,545.57 E= 1,175,939.75	P.I. STA= 9514+90.68 N= 1,864,923.14 E= 1,175,977.06 Δ= 7° 14' 54" D= 1° 02' 30" R= 5500.00' T= 348.36' L= 695.79' E= 11.02' e= N/A T.R.= N/A S.E. RUN= N/A P.C. STA= 9511+42.32 N= 1,864,576.47 E= 1,175,942.80 P.T. STA= 9518+38.12 N= 1,865,271.36 E= 1,175,967.30	P.I. STA= 9520+14.51 N= 1,865,447.69 E= 1,175,962.35 Δ= 5° 06' 31" D= 1° 54' 35" R= 3000.00' T= 133.83' L= 267.48' E= 2.98' e= N/A T.R.= 11' (0') S.E. RUN= 66' (0') P.C. STA= 9518+80.68 N= 1,865,313.91 E= 1,175,966.10 P.T. STA= 9521+48.16 N= 1,865,581.27 E= 1,175,970.53	P.I. STA= 521+27.16 N= 1,864,522.25 E= 1,175,556.14 Δ= 1° 54' 54" D= 4° 55' 05" R= 1165.00' T= 19.47' L= 38.94' E= 0.16' e= N/A T.R.= N/A S.E. RUN= N/A P.C. STA= 521+07.69 N= 1,864,502.79 E= 1,175,556.68 P.T. STA= 521+46.63 N= 1,864,541.72 E= 1,175,556.25	P.I. STA= 528+60.56 N= 1,865,255.64 E= 1,175,560.31 Δ= 1° 57' 29" D= 1° 00' 09" R= 5715.00' T= 97.67' L= 195.31' E= 0.83' e= N/A T.R.= N/A S.E. RUN= N/A P.C. STA= 527+62.89 N= 1,865,157.98 E= 1,175,559.75 P.T. STA= 529+58.21 N= 1,865,353.27 E= 1,175,557.53	P.I. STA= 536+78.45 N= 1,866,073.22 E= 1,175,537.02 Δ= 10° 22' 17" D= 4° 02' 16" R= 1419.00' T= 128.78' L= 256.86' E= 5.83' e= N/A T.R.= N/A S.E. RUN= N/A P.C. STA= 535+49.67 N= 1,865,944.49 E= 1,175,540.68 P.T. STA= 538+06.53 N= 1,866,200.51 E= 1,175,556.58

REVISIONS	
NAME	DATE

ILLINOIS DEPARTMENT OF TRANSPORTATION
F.A.I. 90/94 (DAN RYAN EXPRESSWAY)
63RD ST TO 59TH ST (NB AND SB KNEE WALLS)

ALIGNMENT PLAN

SCALE: 1"=100'
DATE: JANUARY 14, 2009

DRAWN BY: NJH
CHECKED BY: RMG

AECOM

NOTES:
1. AVERAGE GRID TO GROUND CONVERSION FACTOR = 1.000010988654360
2. FOR BENCH MARK INFORMATION, SEE SHEET 1 OF ALIGNMENT PLAN SHEETS.

I:\scg\p207\p40468\p40468.dwg\128-knee-wall_ferco\stn\contract_28\val280022a.dwg 1/14/09 11:44:31 AM