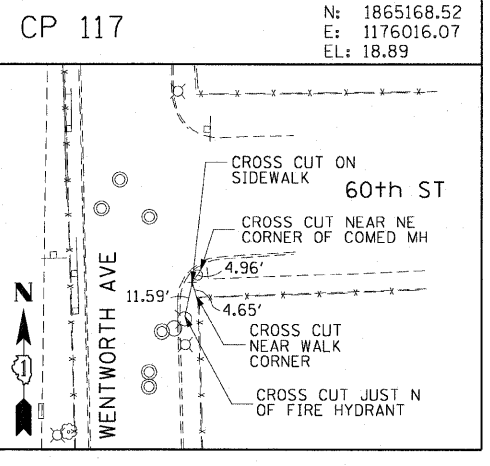
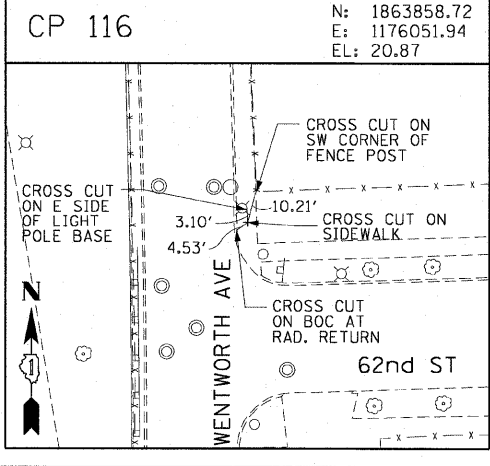
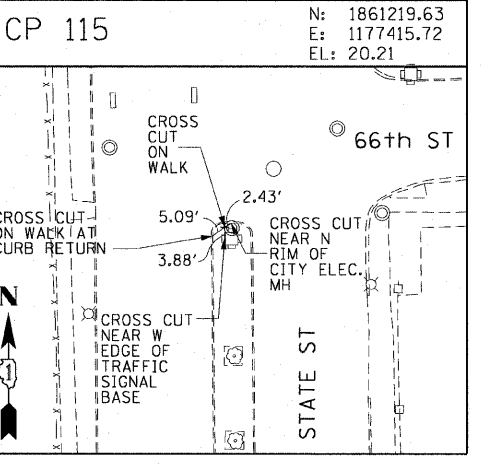
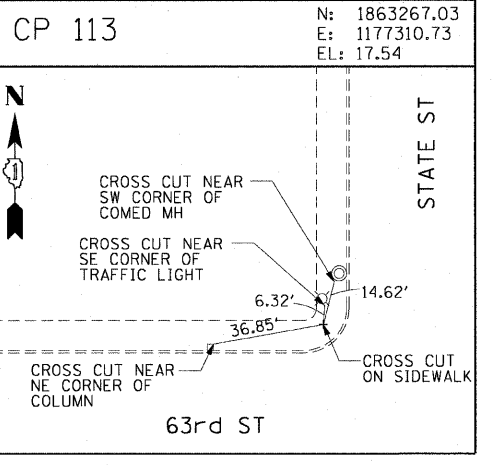
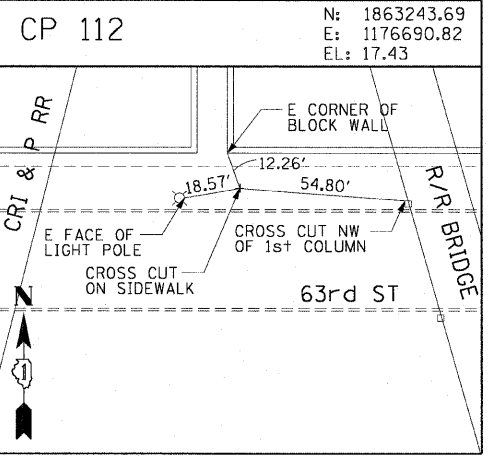
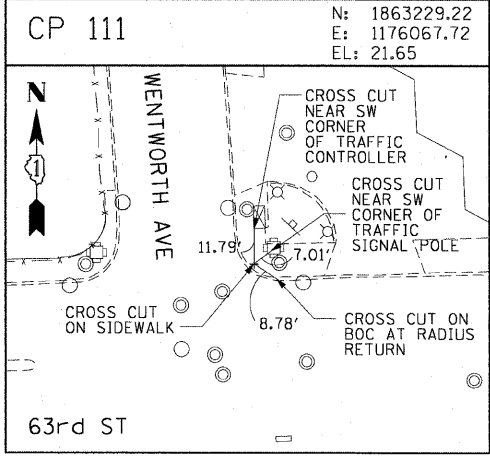
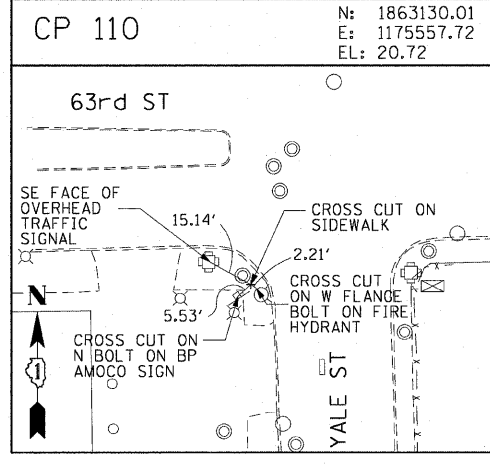
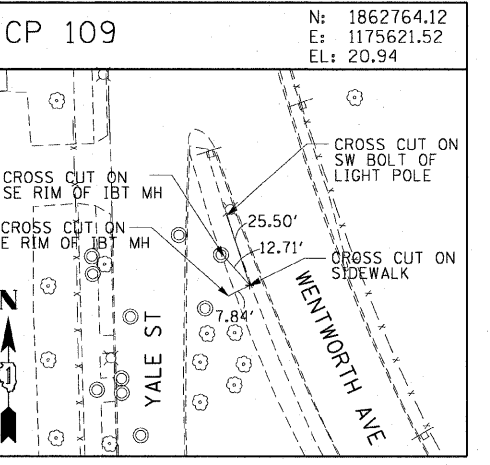
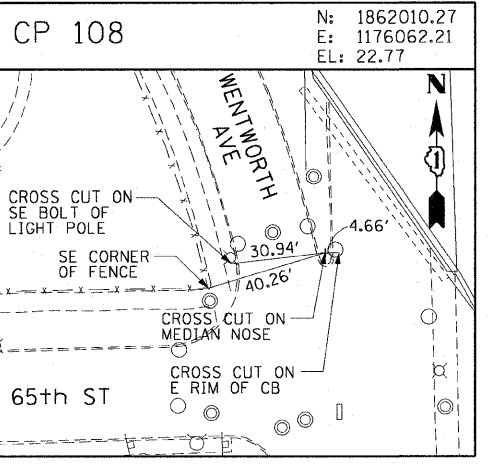
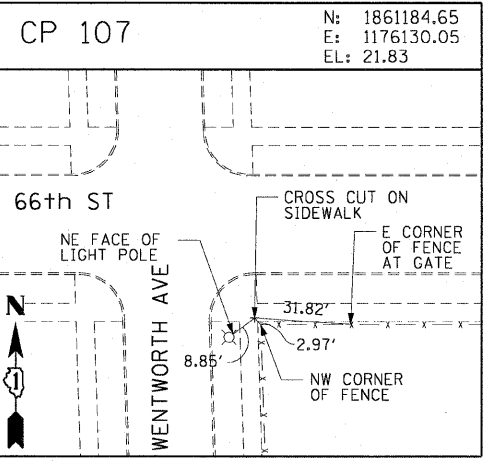
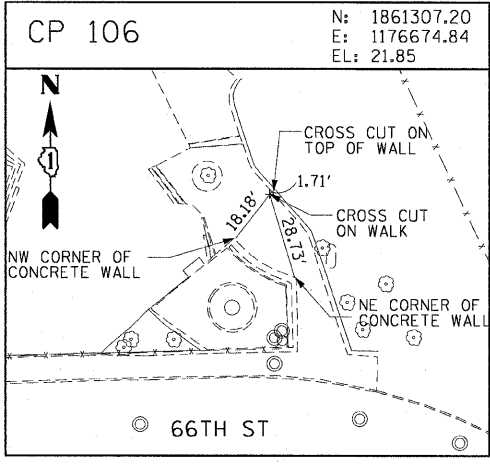
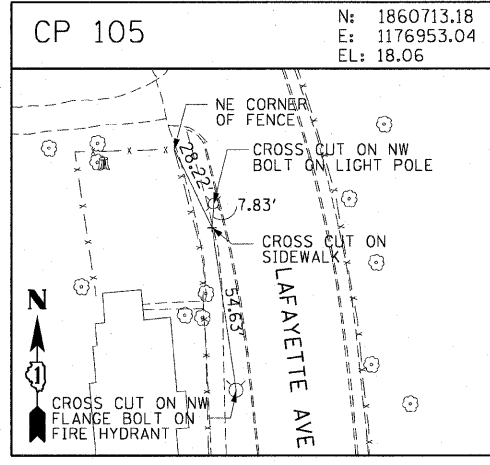
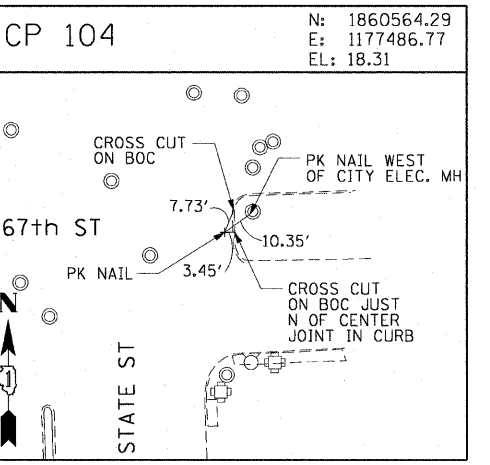
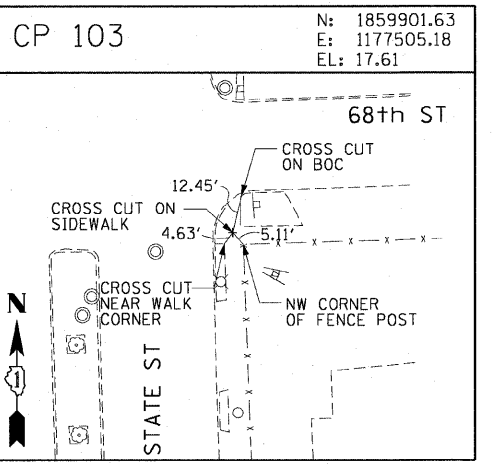
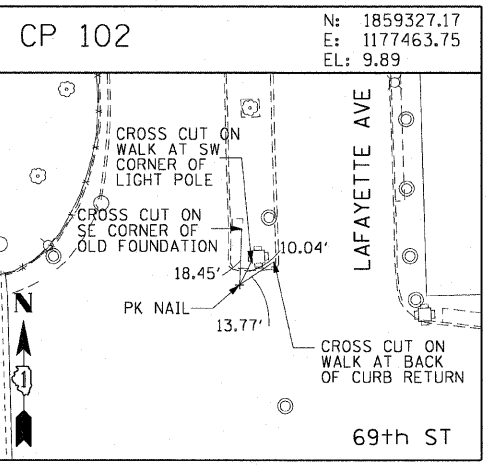
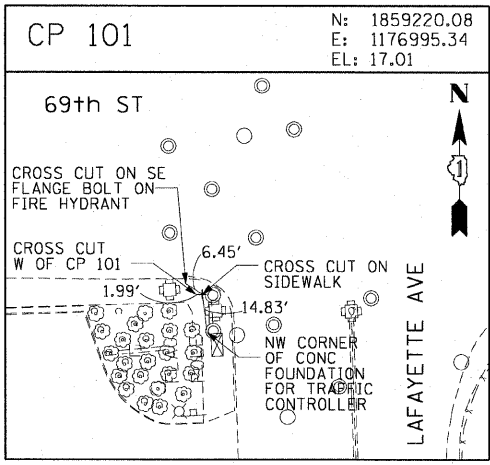
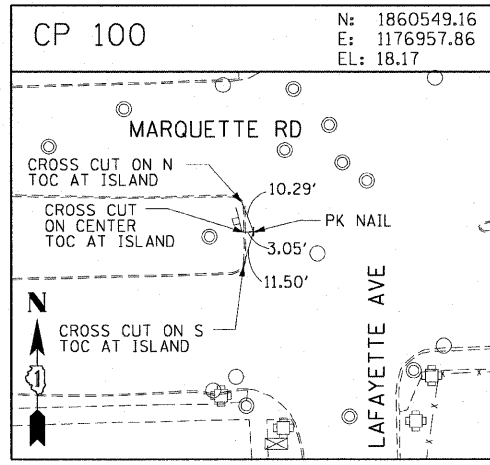


F.A.I. RTE. 90/94	SECTION	COUNTY COOK	TOTAL SHEETS 31	SHEET NO. 10
STA.		TO STA.		
FED. ROAD DIST. NO. 1		ILLINOIS FED. AID PROJECT		62985
(1919.15 & 2021-922 PT) 1				



AECOM

REVISIONS	
NAME	DATE

ILLINOIS DEPARTMENT OF TRANSPORTATION
 F.A.I. 90/94 (DAN RYAN EXPRESSWAY)
 63RD ST TO 59TH ST (NB AND SB KNEE WALLS)

SURVEY TIES AND CONTROL POINTS

SCALE: 1"=30'
 DATE: JANUARY 14, 2009

DRAWN BY: MRK
 CHECKED BY: JAL

V:\schiff\2007\440468\civil\28-knee-wall-fence\CP\control\28cp12012009.dwg