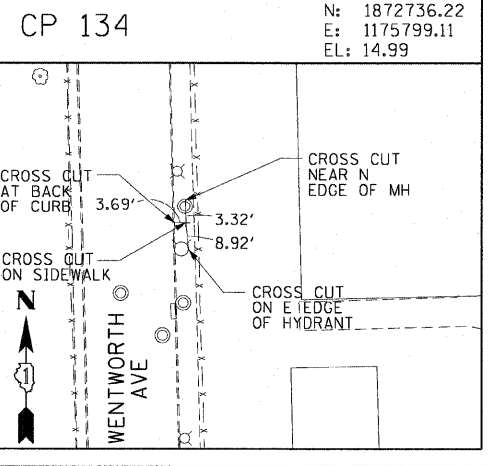
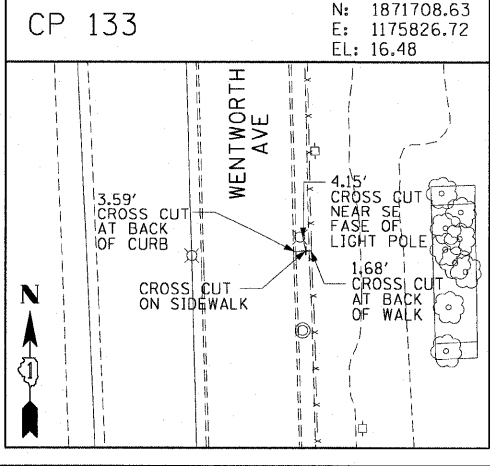
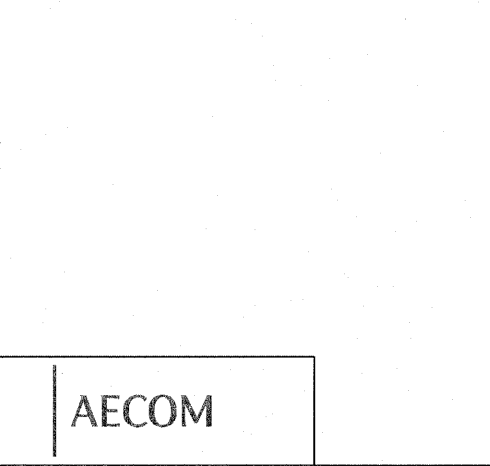
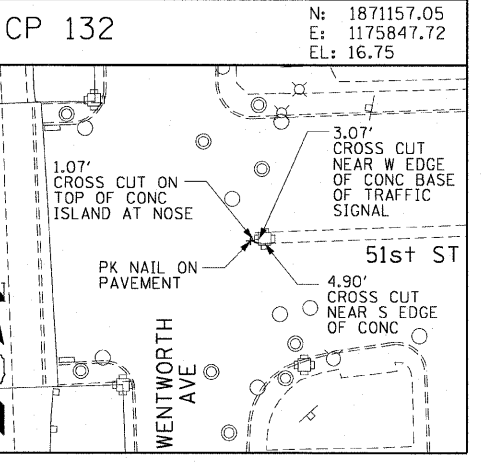
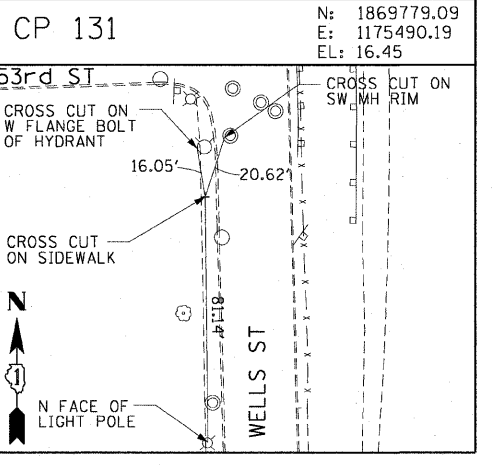
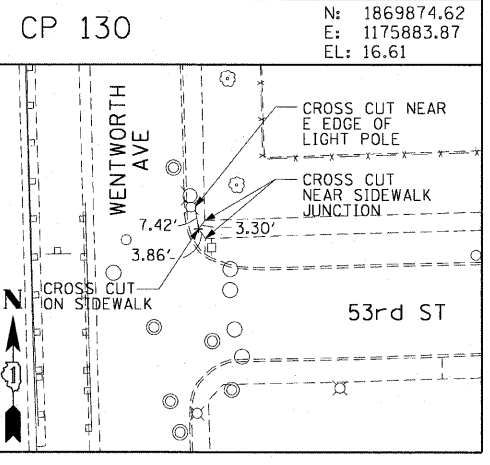
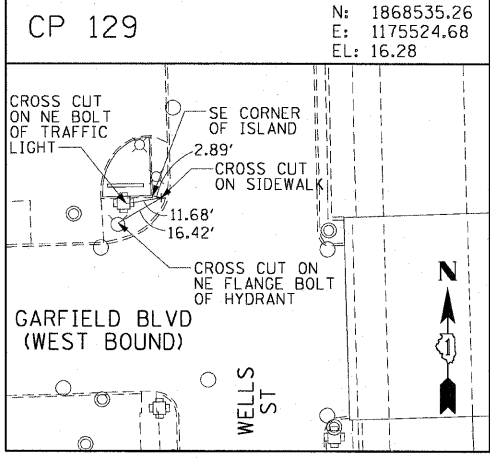
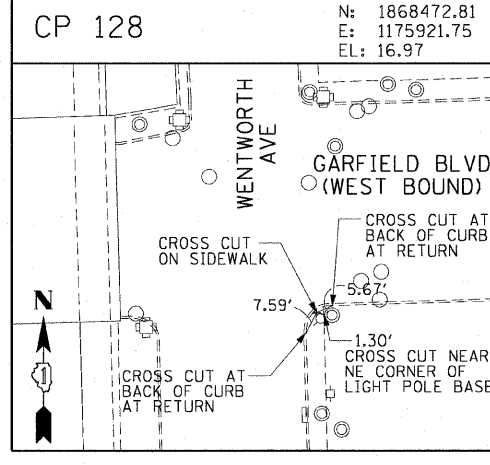
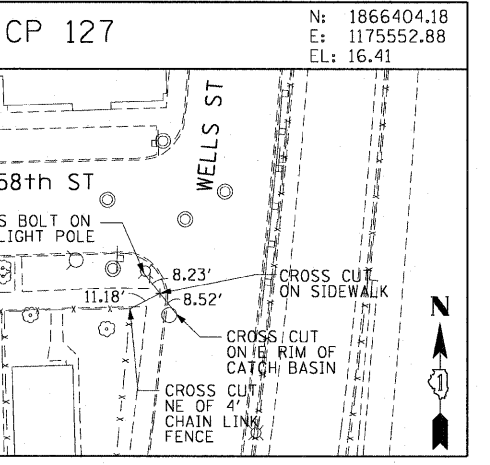
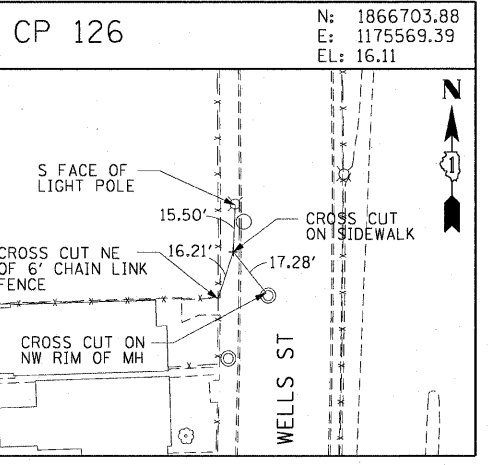
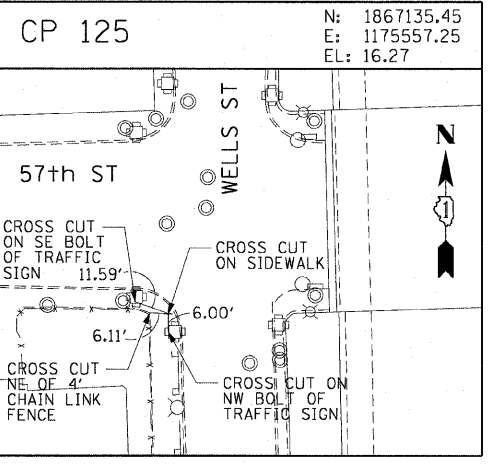
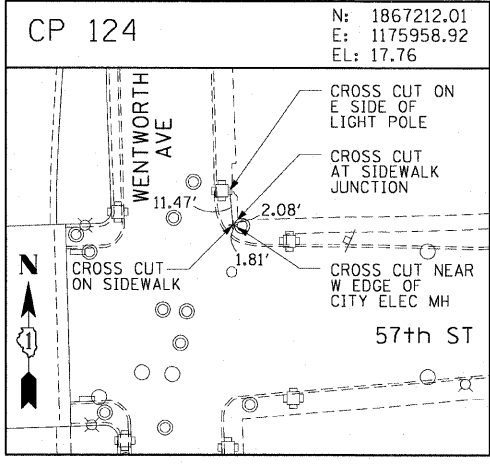
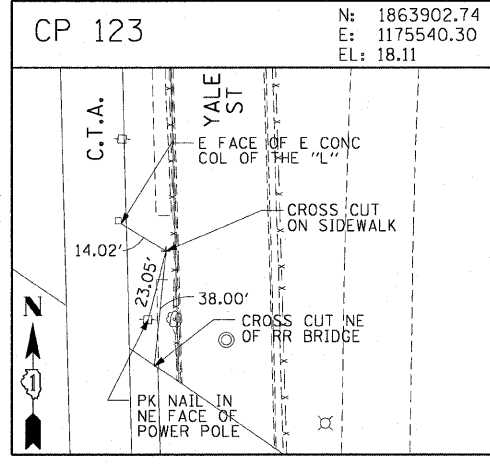
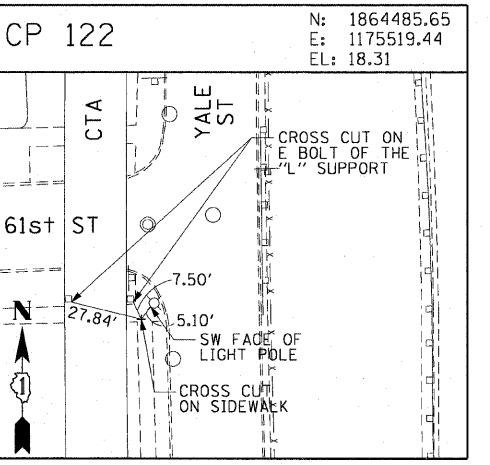
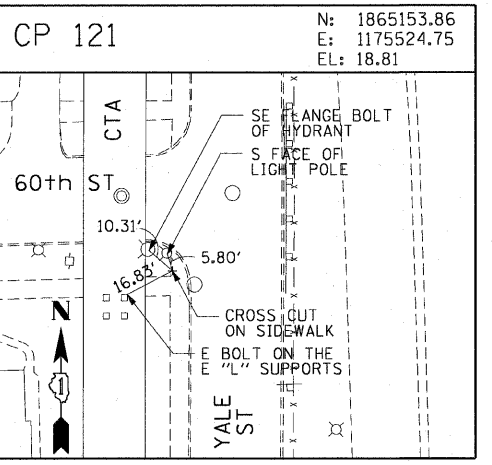
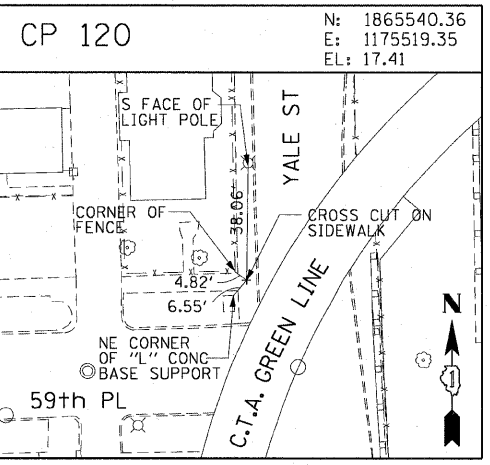
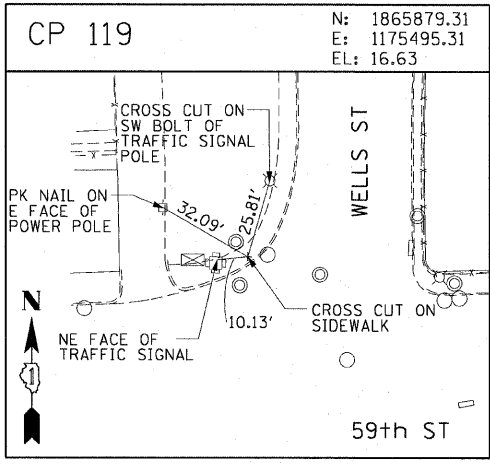
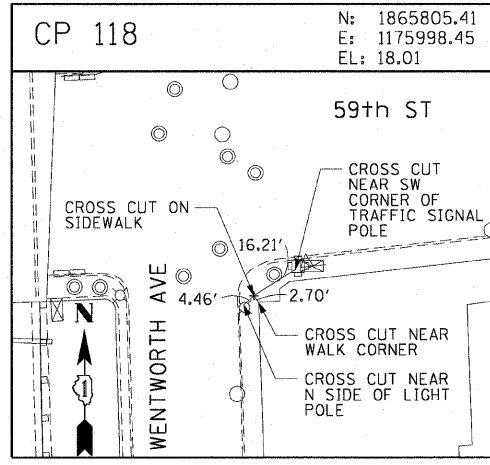


|                       |         |          |              |                           |
|-----------------------|---------|----------|--------------|---------------------------|
| F.A.I. RTE.           | SECTION | COUNTY   | TOTAL SHEETS | SHEET NO.                 |
| 90/94                 |         | COOK     | 31           | 11                        |
| STA.                  |         | TO STA.  |              |                           |
| FED. ROAD DIST. NO. 1 |         | ILLINOIS |              | FED. AID PROJECT          |
|                       |         |          |              | (1919.15 & 2021-922 PT) 1 |
|                       |         |          |              | 62985                     |



AECOM

| REVISIONS |      |
|-----------|------|
| NAME      | DATE |
|           |      |
|           |      |
|           |      |
|           |      |
|           |      |
|           |      |
|           |      |
|           |      |
|           |      |

ILLINOIS DEPARTMENT OF TRANSPORTATION  
F.A.I. 90/94 (DAN RYAN EXPRESSWAY)  
63RD ST TO 59TH ST (NB AND SB KNEE WALLS)

**SURVEY TIES AND CONTROL POINTS**

SCALE: 1"=30'  
DATE: JANUARY 14, 2009

DRAWN BY: MRK  
CHECKED BY: JAL

\\scigrifp207\p40468\p40468.dwg\28-knee-wall\Fence\st\control\28\28102020.stb 1/14/2009 11:44:34 AM