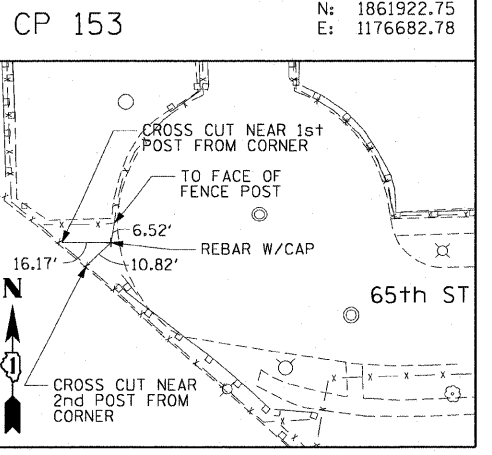
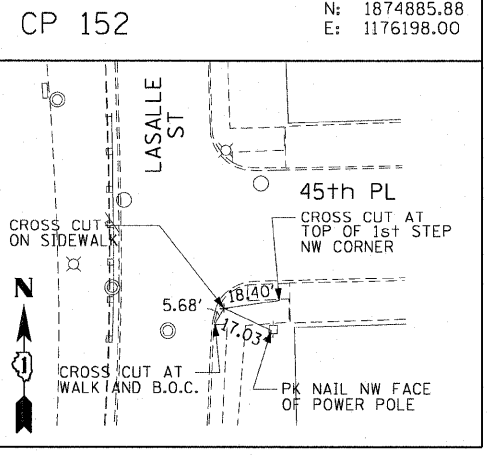
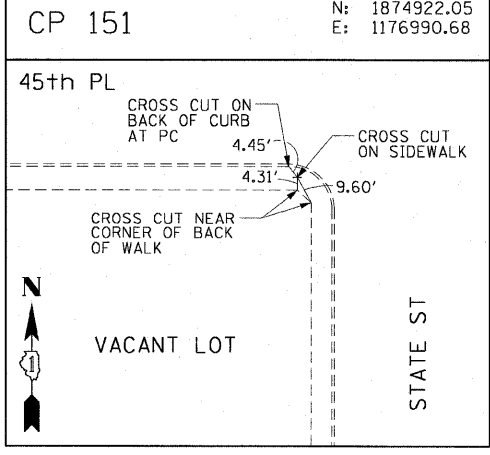
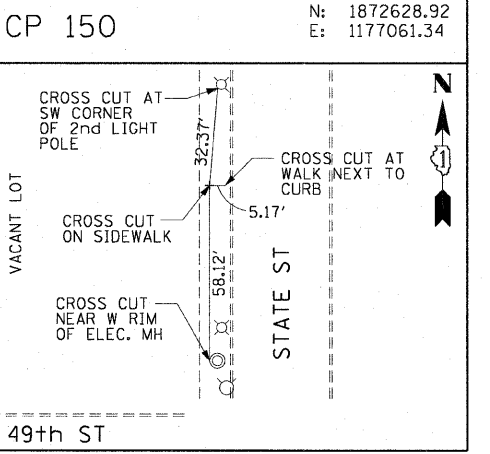
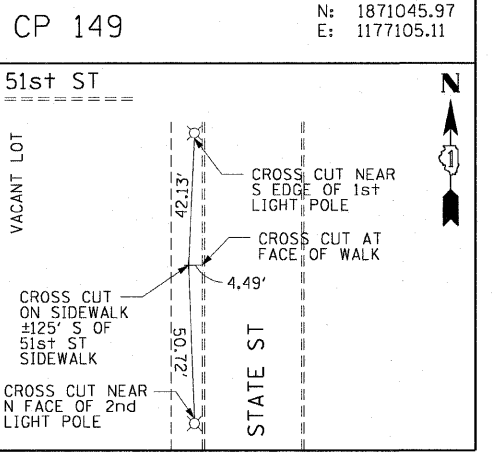
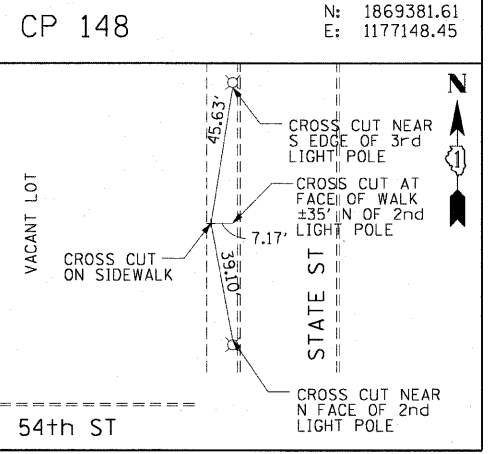
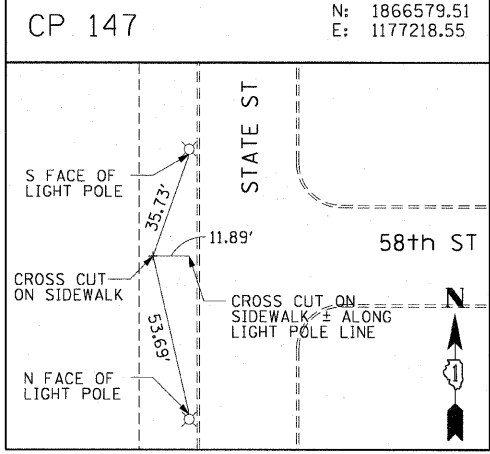
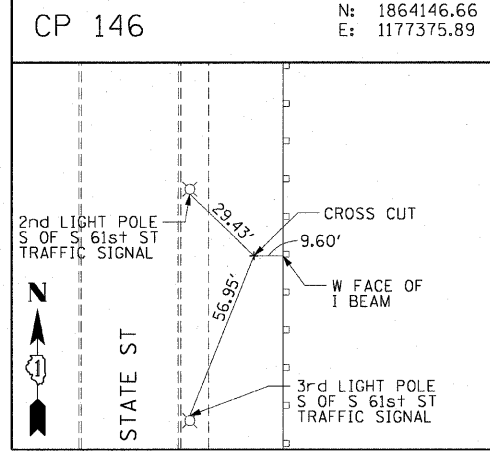
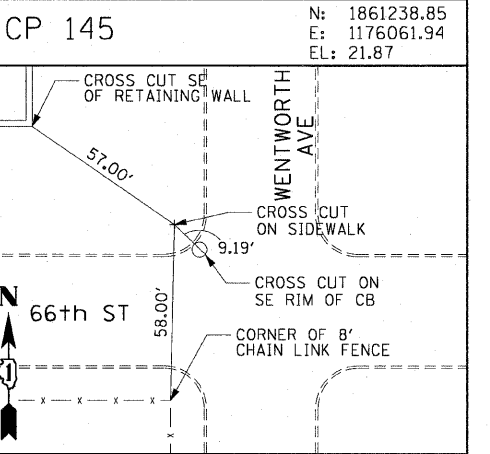
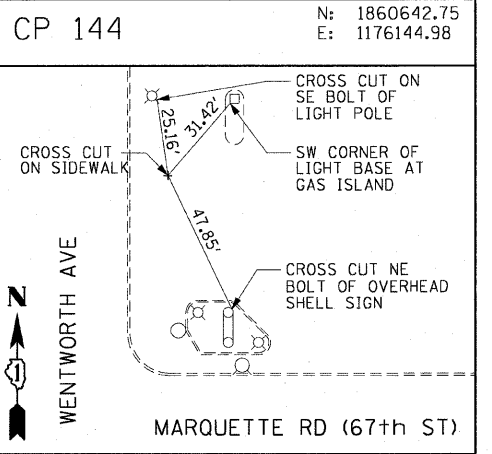
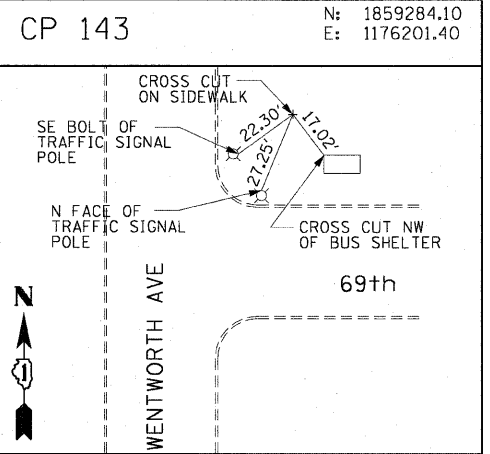
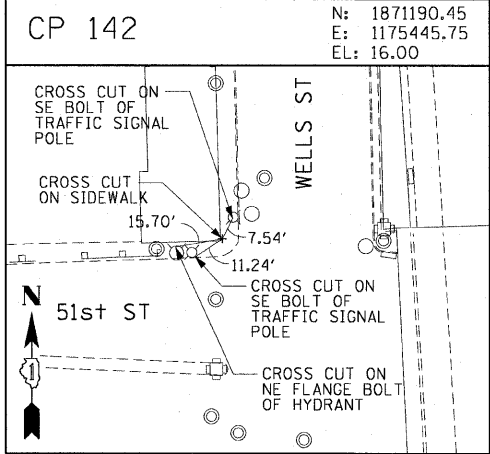
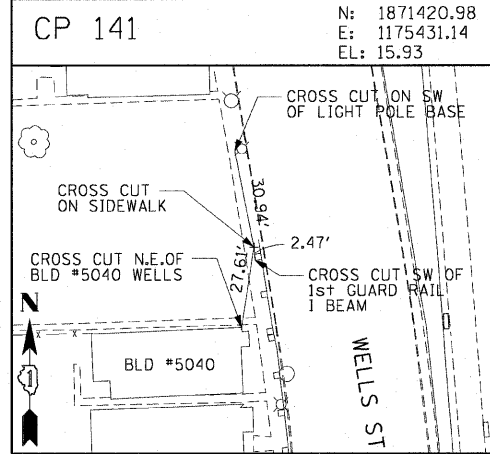
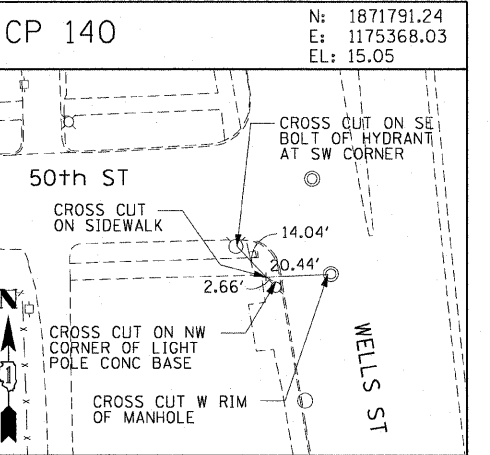
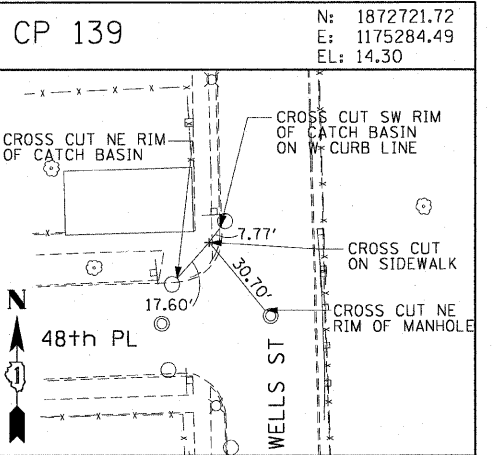
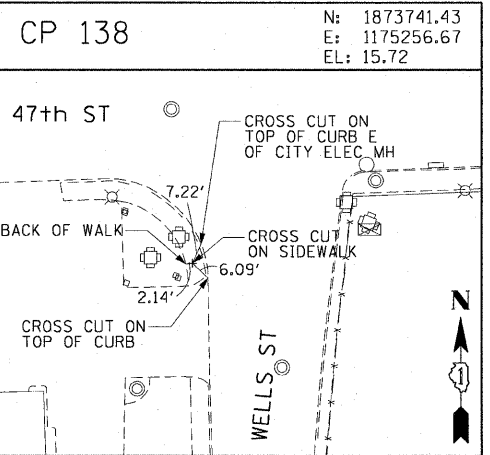
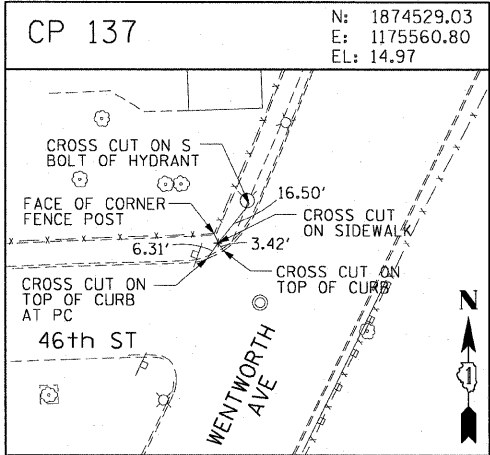
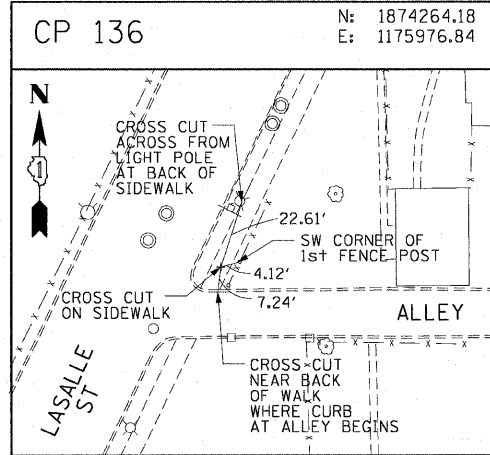


F.A.I. RTE.	SECTION	COUNTY	TOTAL SHEETS	SHEET NO.
90/94		COOK	31	12
STA.	TO STA.			
FED. ROAD DIST. NO. 1		ILLINOIS	FED. AID PROJECT	
				62985



REVISIONS	
NAME	DATE

ILLINOIS DEPARTMENT OF TRANSPORTATION  
F.A.I. 90/94 (DAN RYAN EXPRESSWAY)  
63RD ST TO 59TH ST (NB AND SB KNEE WALLS)

**SURVEY TIES AND CONTROL POINTS**

SCALE: 1"=30'  
DATE: JANUARY 14, 2009

DRAWN BY: MRK  
CHECKED BY: JAL

AECOM

1/14/09 11:44:35 AM \\us03gtr\p201\p40468\p40468\civil\2B-Frame\wall\Fence\st\cont\racl\_2B\racl\_2B\racl\_2B.dwg