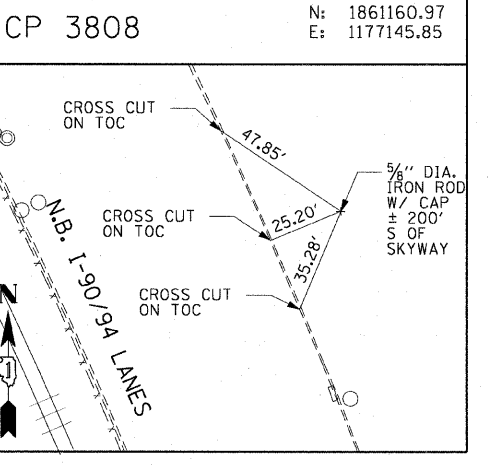
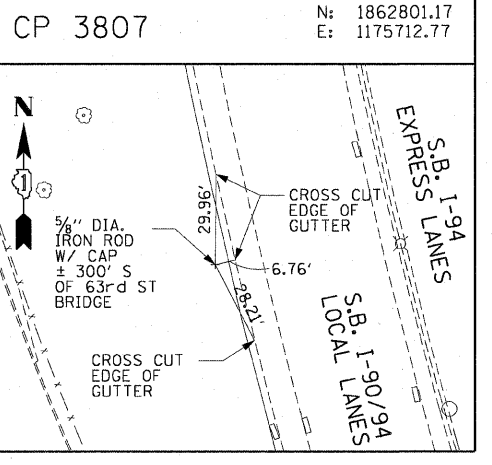
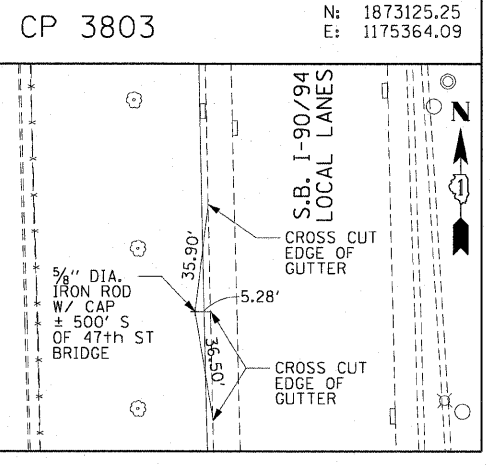
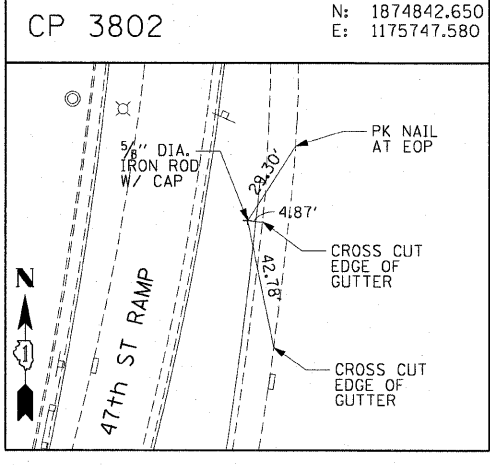
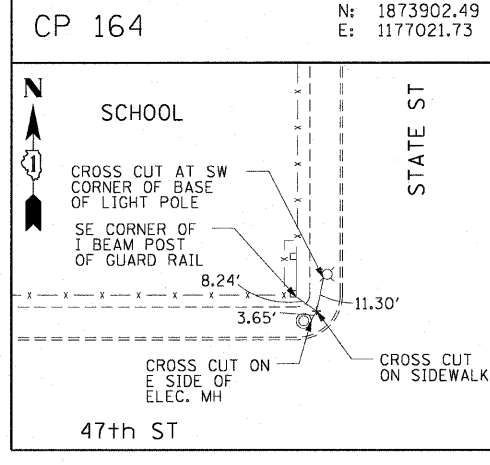
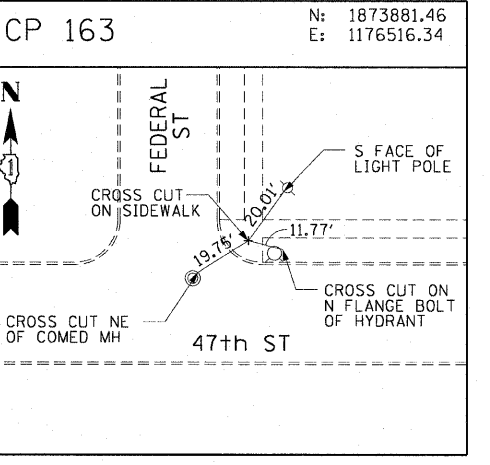
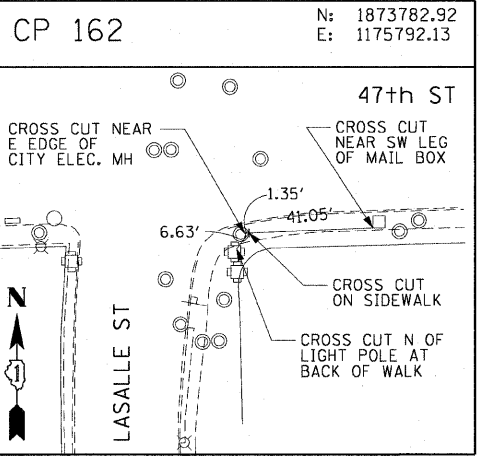
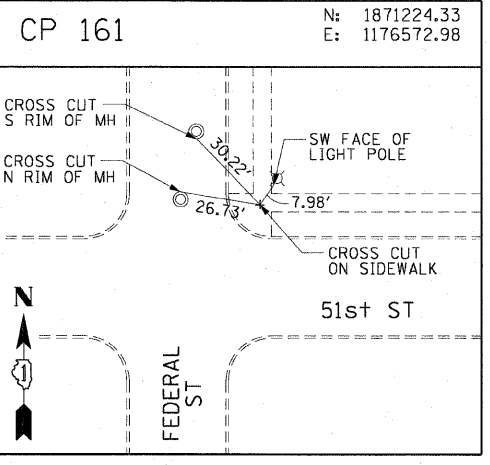
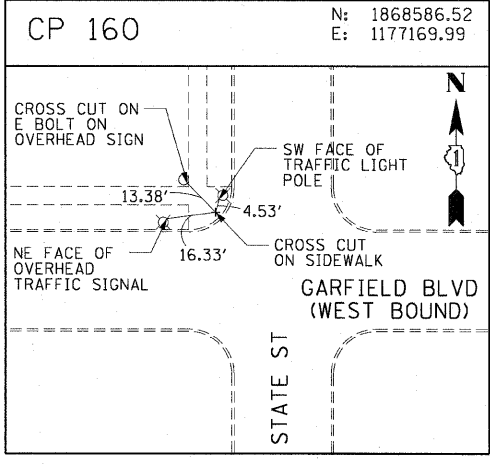
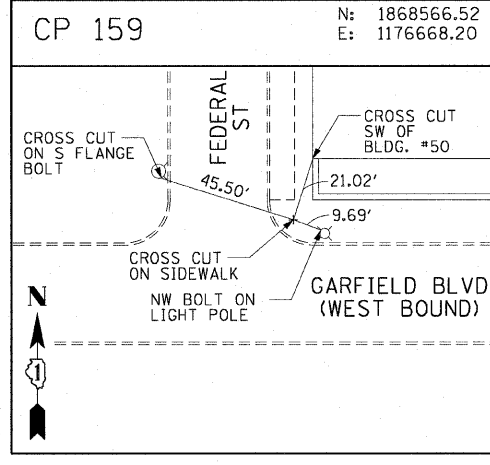
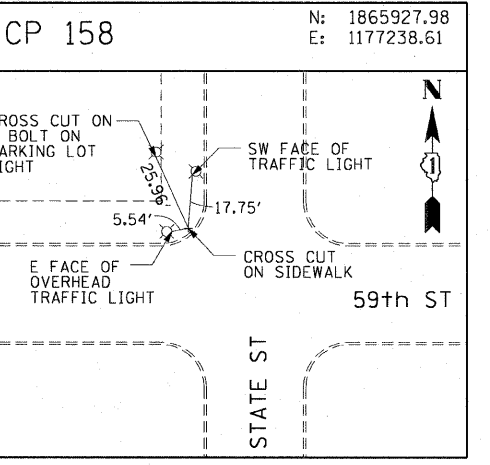
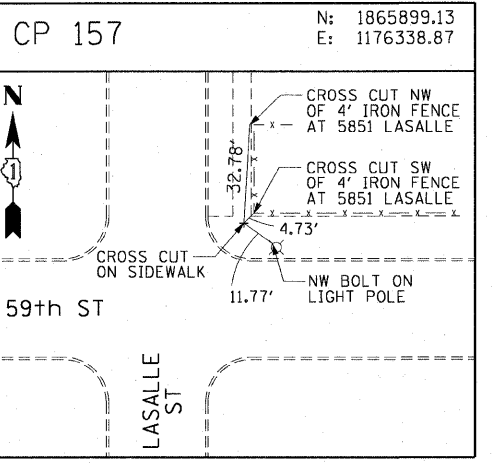
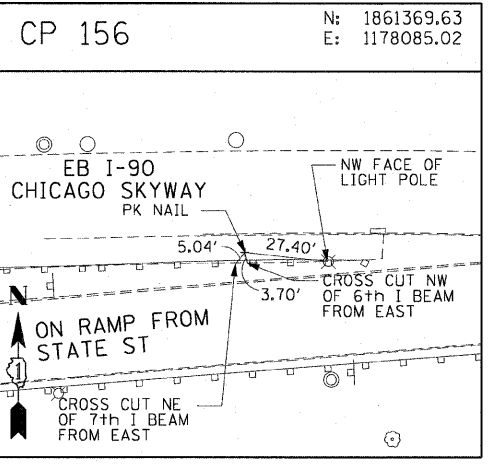
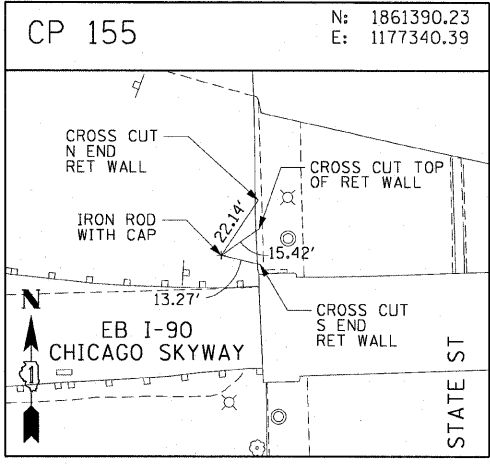
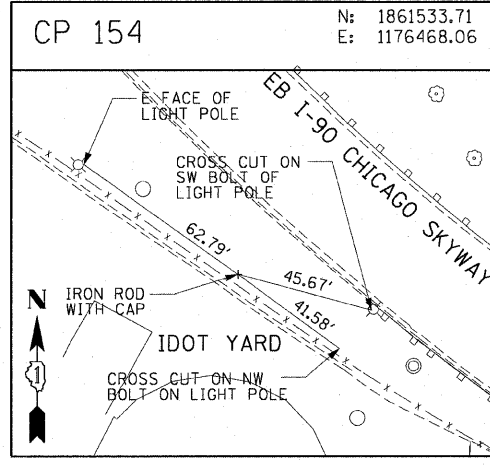


F.A.I. RTE.	SECTION	COUNTY	TOTAL SHEETS	SHEET NO.
90/94		COOK	31	13
STA.	TO STA.			
FED. ROAD DIST. NO. 1	ILLINOIS	FED. AID PROJECT		
• (1919.15 & 2021-922 PT) I			62985	



AECOM

REVISIONS	
NAME	DATE

ILLINOIS DEPARTMENT OF TRANSPORTATION
 F.A.I. 90/94 (DAN RYAN EXPRESSWAY)
 63RD ST TO 59TH ST (NB AND SB KNEE WALLS)
 SURVEY TIES AND CONTROL POINTS
 SCALE: 1"=30'
 DATE: JANUARY 14, 2009
 DRAWN BY: MRK
 CHECKED BY: JAL

1/14/09 11:44:36 AM
 \\usccgtr\p201\040468\p40468\civil\28-knee_wall\1_fence_sht\control\2802\2802.dwg