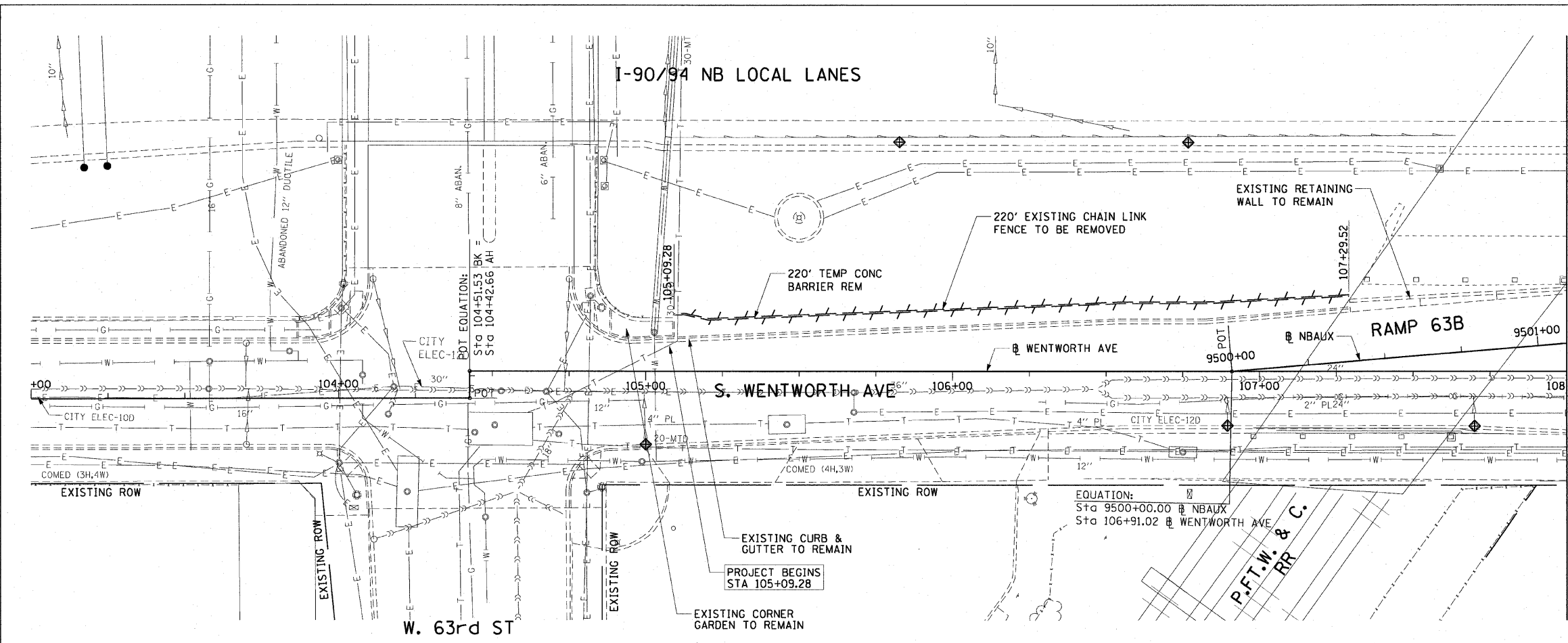


F.A.I. RTE.	SECTION	COUNTY	TOTAL SHEETS	SHEET NO.
90/94		COOK	31	14
STA. 105+09.28 TO STA. 108+00				
FED. ROAD DIST. NO. 1 ILLINOIS FED. AID PROJECT				
• (1919.15 & 2021-922 PT1) I 62985				

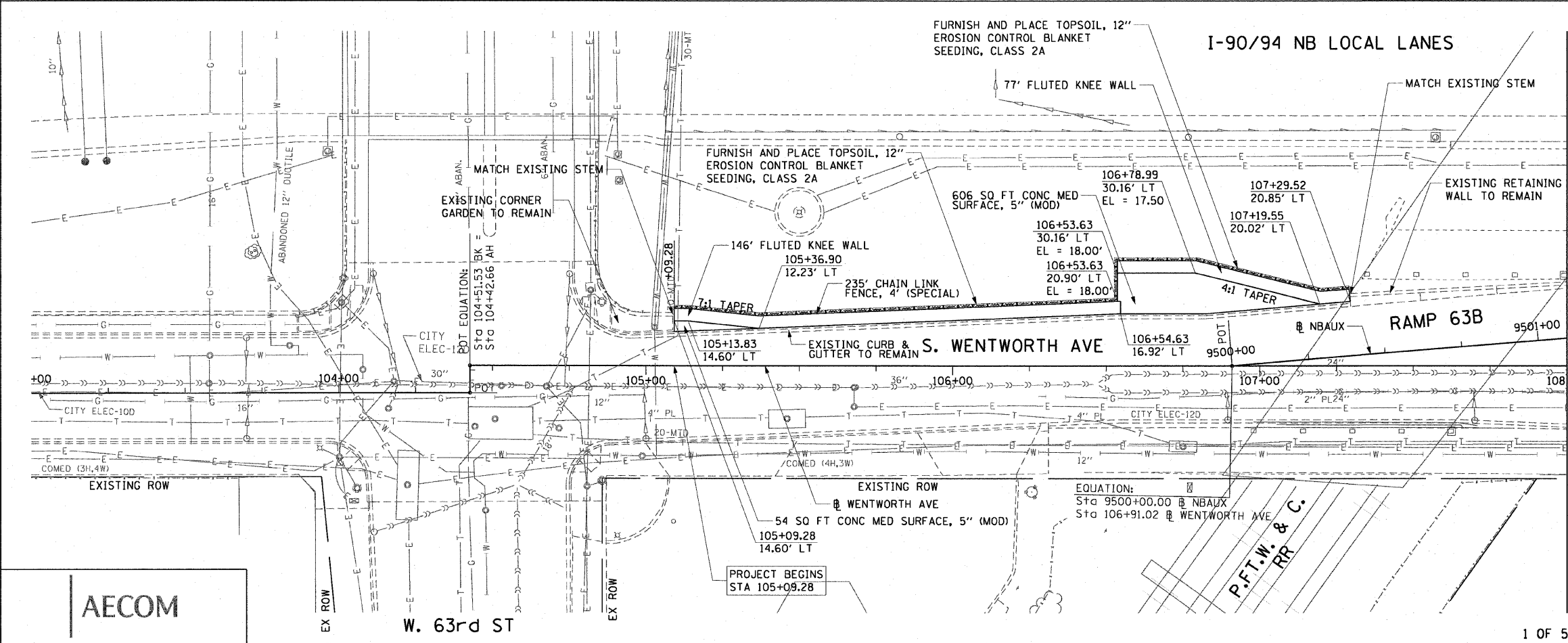


LEGEND:

- AREA REMOVALS
- LINEAR REMOVALS
- INLET FILTER



EXISTING CONDITIONS AND REMOVAL
PROPOSED IMPROVEMENTS



NOTES:

1. SEE STRUCTURAL DETAILS FOR FLUTED KNEE WALL DETAILS.
2. ALL POINT CALLOUTS ARE TAKEN AT THE EDGE OF THE KNEE WALL BASE (SEE BELOW).
3. SEE ROADWAY DETAILS FOR CONCRETE MEDIAN AND CONCRETE CURB DETAILS.



MATCH LINE STA 108+00

REVISIONS	
NAME	DATE

ILLINOIS DEPARTMENT OF TRANSPORTATION
F.A.I. 90/94 (DAN RYAN EXPRESSWAY)
63RD ST TO 59TH ST (NB AND SB KNEE WALLS)
**EXISTING AND PROPOSED ROADWAY PLANS
WENTWORTH AVENUE**

SCALE: 1"=20'
DATE: JANUARY 14, 2009

DRAWN BY: NJH
CHECKED BY: RMG

AECOM

V:\schiff\p201\40468\40468\civil\28-knee-wall\1-enece\gsm\contract_28\pp28002\gsm