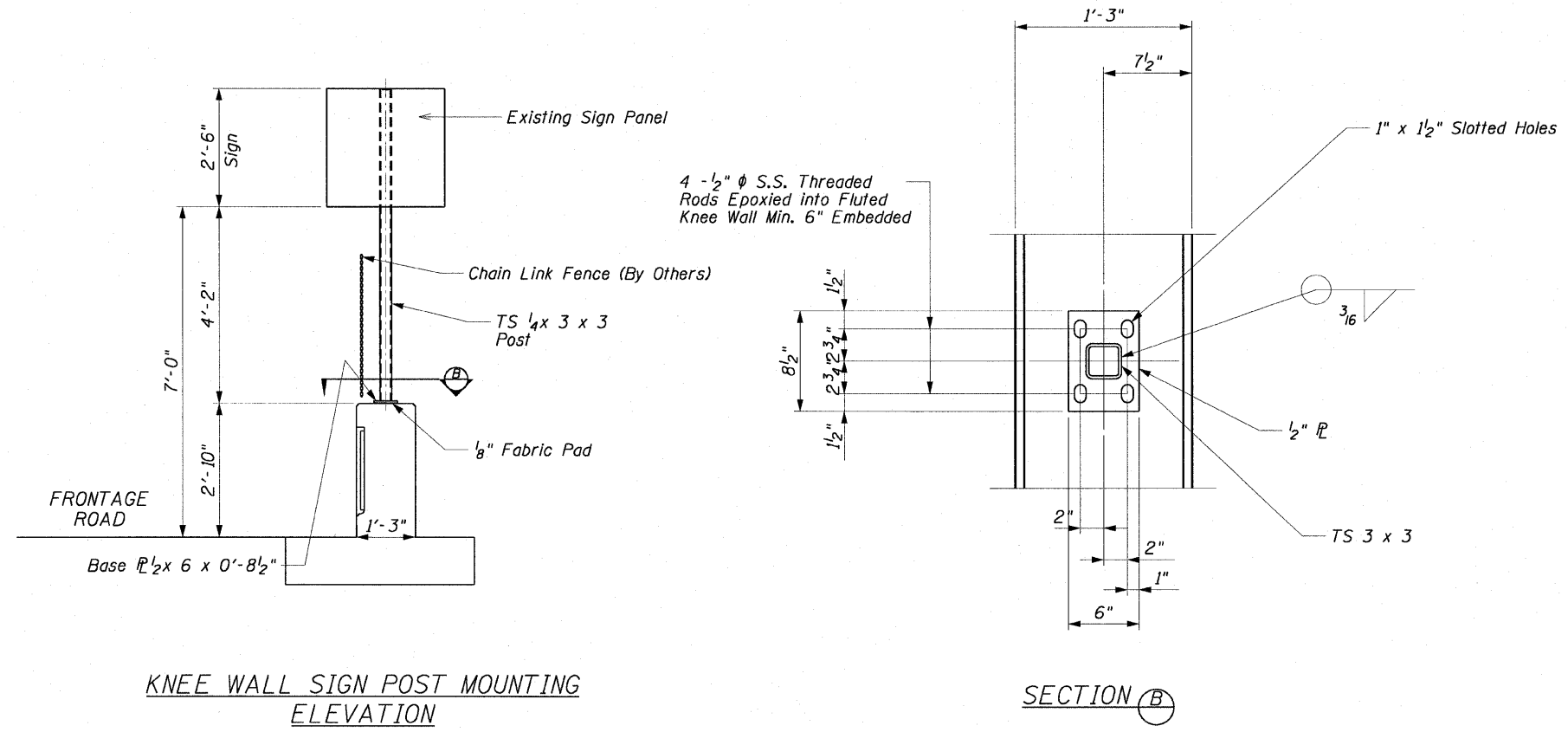


F.A.I. RTE.	SECTION	COUNTY	TOTAL SHEETS	SHEET NO.
90/94	•	COOK	31	20
STA.		TO STA.		
FED. ROAD DIST. NO. 1		ILLINOIS	FED. AID PROJECT	
• (1919.15 & 2021-922 PT1) 1		62985		

WALL MOUNTED SIGN SUPPORT FOR TYPE 1 PANEL (SPECIAL) DETAILS



KNEE WALL SIGN POST MOUNTING ELEVATION

SECTION B

NOTE

When drilling and epoxy grouting the anchor rods, the Contractor shall use the capsule or the adhesive cartridge type anchor rods that have been previously tested and given a prior approval by IDOT. The Contractor shall install these anchor rods in pre-drilled holes according to the manufacturer's recommendations and procedures. The capsule or the adhesive cartridge shall be sealed with pre-measured amounts of the adhesive chemical. This associated materials and work performed shall be included in the cost of Wall Mounted Sign Support for Type 1 Panel (Special).

AECOM

REVISIONS	
NAME	DATE

ILLINOIS DEPARTMENT OF TRANSPORTATION  
 F.A.I. 90/94 (DAN RYAN EXPRESSWAY)  
 63RD ST TO 59TH ST (NB AND SB KNEE WALLS)  
 ROADWAY DETAILS  
 WALL MOUNTED SIGN SUPPORT  
 FOR TYPE 1 PANEL (SPECIAL) DETAILS  
 SCALE: NONE  
 DATE: JANUARY 14, 2009  
 DRAWN BY: DS  
 CHECKED BY: SWANG

\\usscgitf\p207\y40465\y40468\civil\28\knee\_wall\_fence\st\contract\28\m28022021.dwg