

STATE OF ILLINOIS
DEPARTMENT OF TRANSPORTATION

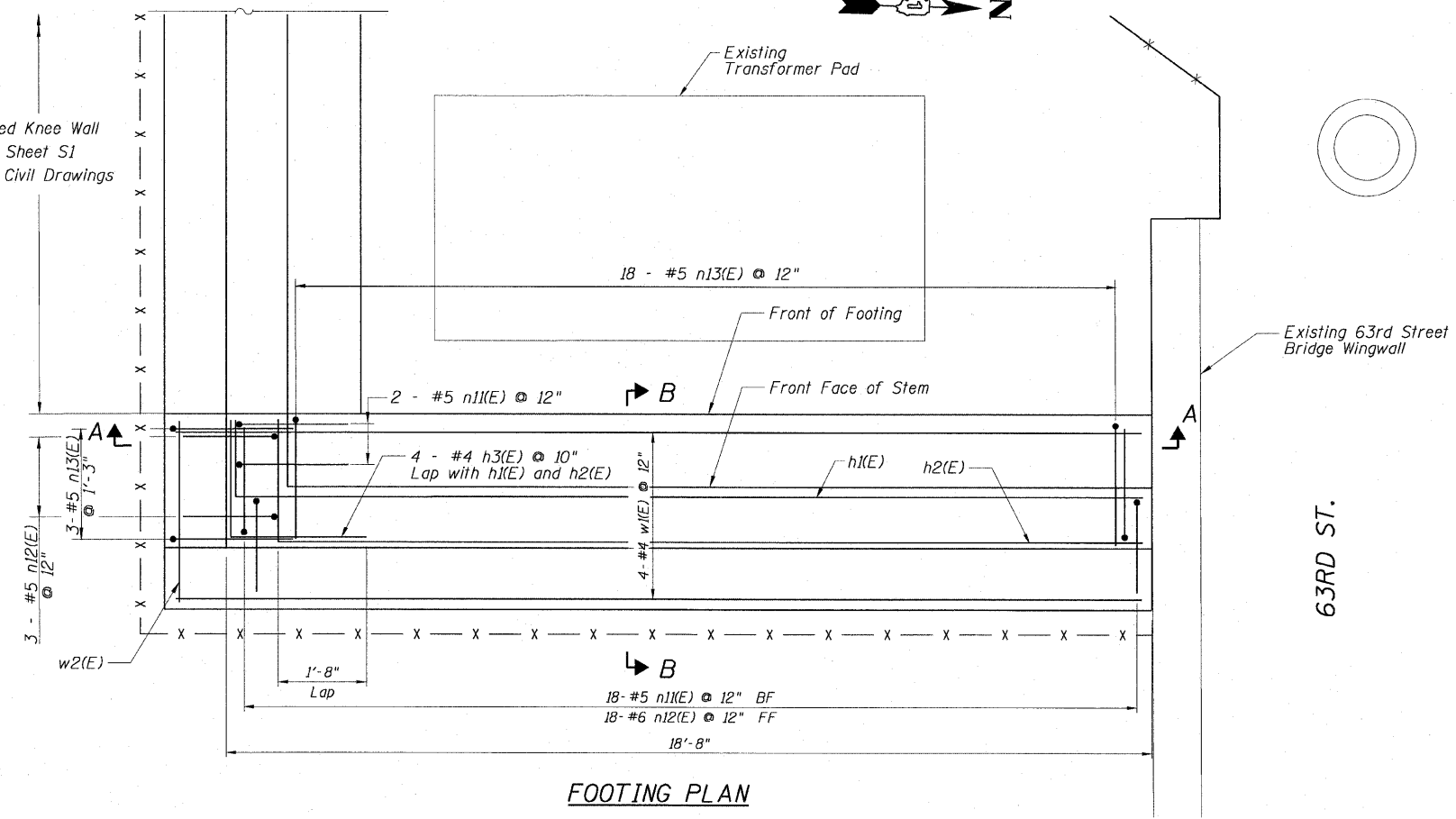
F.A.I. RTE.	SECTION	COUNTY	TOTAL SHEETS	SHEET NO.
90/94		COOK	31	24
STA.	TO STA.			
FED. ROAD DIST. NO. 1		ILLINOIS	FED. AID PROJECT	
(1919.15 & 2021-922 PT1)			62985	

BILL OF MATERIAL

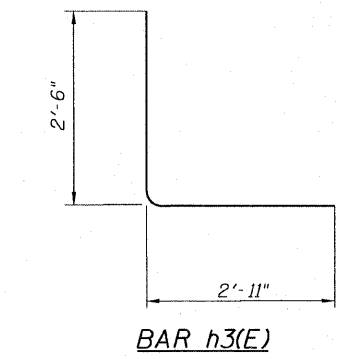
Bar	No.	Size	Length	Shape
h1(E)	4	#4	19'-10"	┌
h2(E)	4	#4	19'-11"	┌
h3(E)	4	#4	5'-5"	┌
n1(E)	20	#5	7'-5"	┌
n12(E)	21	#6	7'-2"	┌
n13(E)	21	#5	7'-1"	┌
w1(E)	6	#4	19'-7"	┌
w2(E)	3	#4	3'-9"	┌
Item		Unit	Quantity	
Concrete Structures		Cu. Yd.	6.4	
Concrete Superstructure		Cu. Yd.	2.7	
Reinforcement Bars, Epoxy Coated		Pound	743	
Rustication Finish		Sq. Ft.	31	
Protective Coat		Sq. Ft.	105	

NOTES:

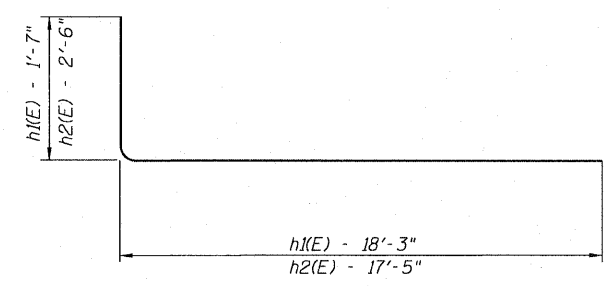
- For location of Fluted Knee Wall, see Civil Drawings.
- Reinforcement bar shall conform to the requirements of AASHTO M-31 or M-322 Grade 60.
- Concrete: $f'_c = 3500$ psi
- At locations where Fluted Knee Wall abuts a rigid structure, a $\frac{1}{2}$ " thick preformed expansion joint filler (PJF) conforming to the shape of the structure shall be installed between the wall and the structure. $\frac{3}{4}$ " PJF shall be installed where Fluted Knee Wall footing abuts curb and gutter. The cost shall be included in "Concrete Structures".
- Protective Coat shall be applied according to Section 503.19 of the Standard Specifications to the top of stem and to the face of stem and top of footing on the Frontage Road side of the Knee Wall.
- Chain Link Fence will not be paid for in this Contract, but shall be furnished and installed in Contract 63003.
- For Fluted Knee Wall standard details and per foot quantities, see Sheet S1.
- Minimum lap for #4 bars shall be 1'-8".
- BF = Back Face
EF = Each Face
FF = Front Face



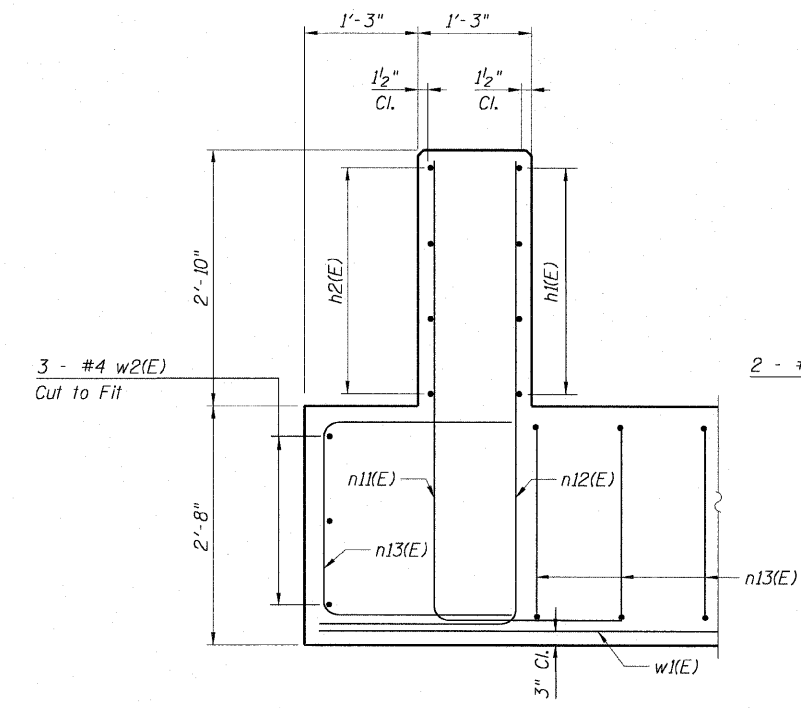
FOOTING PLAN



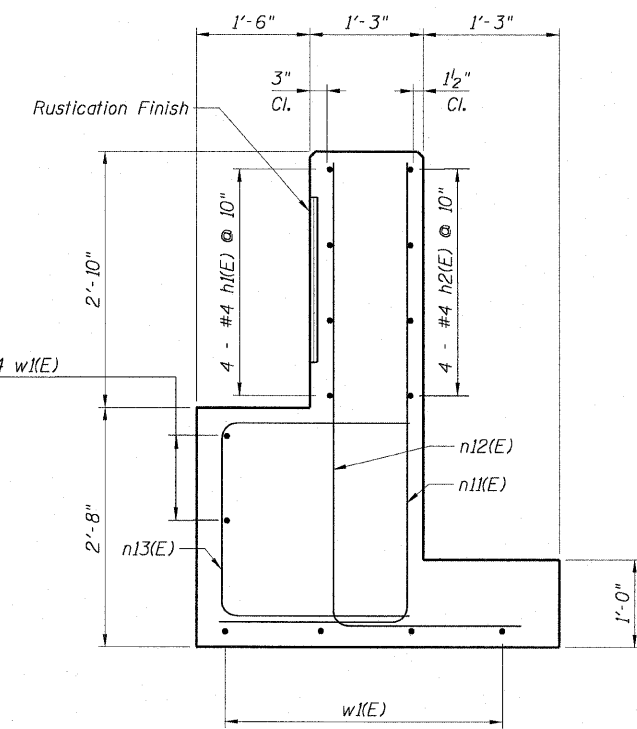
BAR h3(E)



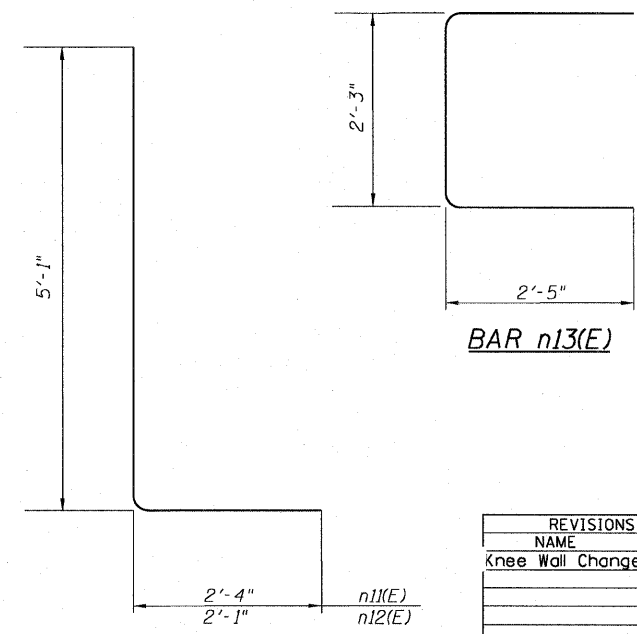
BARS h1(E) & h2(E)



SECTION A-A



SECTION B-B



BARS n11(E) & n12(E)

REVISIONS	
NAME	DATE
Knee Wall Change	5/19/09

ILLINOIS DEPARTMENT OF TRANSPORTATION
F.A.I. 90/94 (DAN RYAN EXPRESSWAY)
63RD ST TO 59TH ST (NB AND SB KNEE WALLS)
STRUCTURAL DETAIL 1
63RD STREET WINGWALL INTERFACE DETAILS
STA. 507+41.82
WELLS STREET

SCALE: None
DATE: JANUARY 14, 2009

DRAWN BY: CHD/KWT
CHECKED BY: MJP

AECOM

P:\140466\Struct\28-Knee-Wall\Fence\Sheet S2 of 5.dwg 5/19/2009 1:31:27 PM