

STATE OF ILLINOIS
DEPARTMENT OF TRANSPORTATION

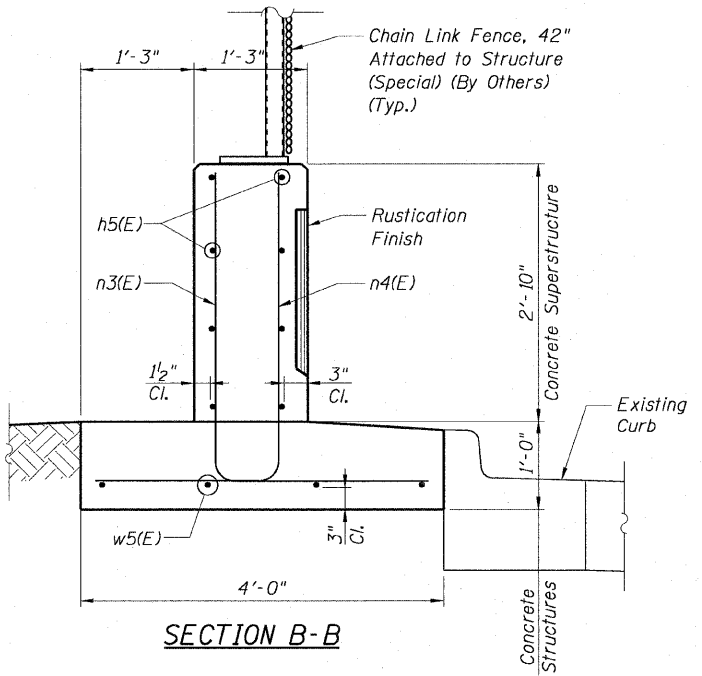
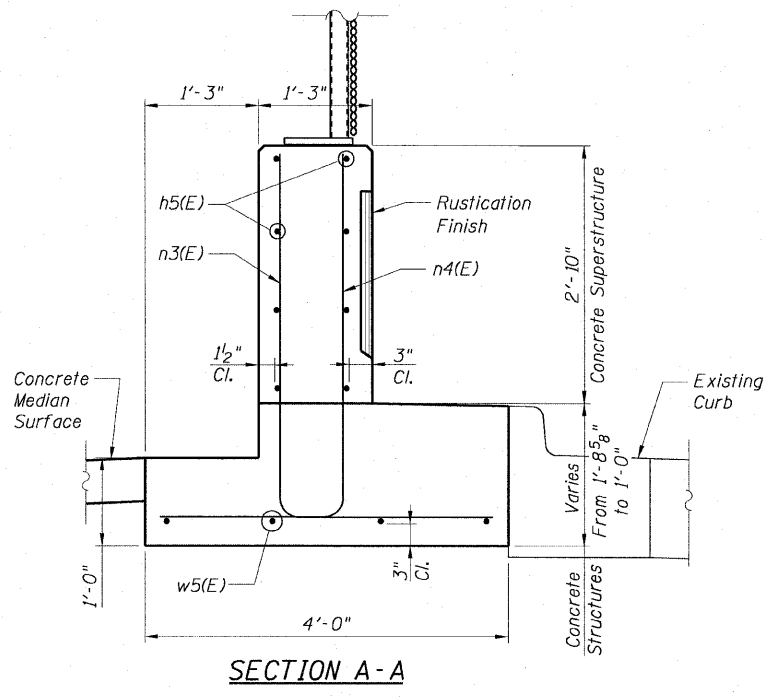
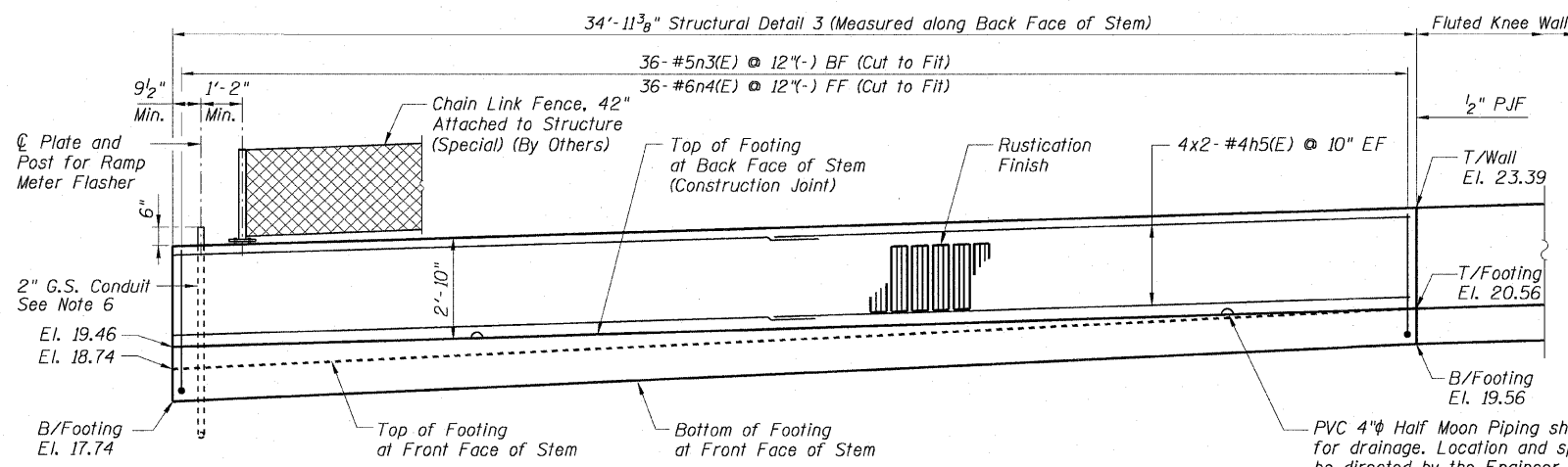
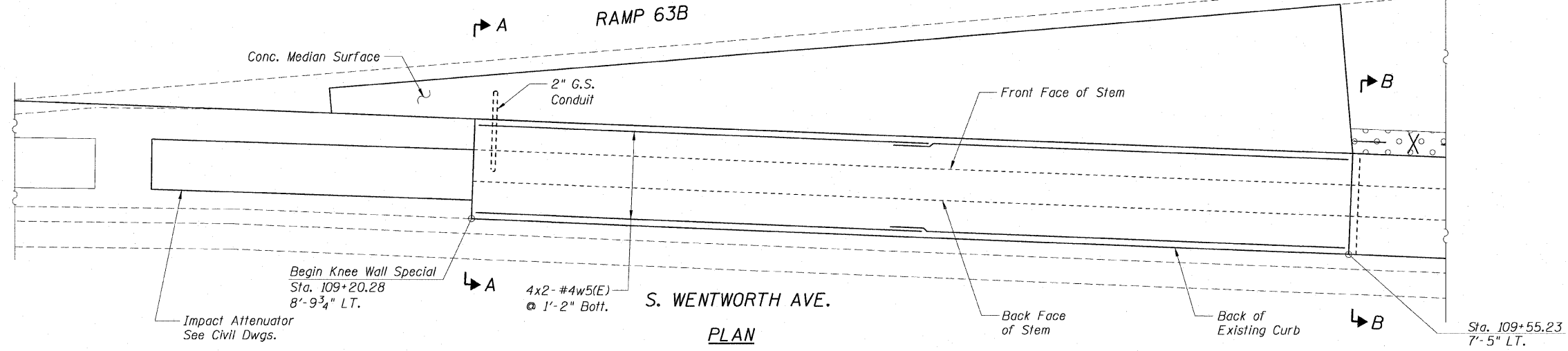
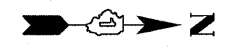
F.A.I. RTE.	SECTION	COUNTY	TOTAL SHEETS	SHEET NO.
90/94		COOK	31	26
STA.	TO STA.			
FED. ROAD DIST. NO. 1	ILLINOIS	FED. AID PROJECT		
(1919.15 & 2021-922 PT1) 1		62985		

BILL OF MATERIAL

Bar	No.	Size	Length	Shape
h5(E)	16	#4	18'-1"	—
n3(E)	36	#5	6'-4"	—
n4(E)	36	#6	6'-0"	—
w5(E)	8	#4	18'-1"	—
Item	Unit	Quantity		
Concrete Structures	Cu. Yd.	6.5		
Concrete Superstructure	Cu. Yd.	4.6		
Reinforcement Bars, Epoxy Coated	Pound	855		
Rustication Finish	Sq. Ft.	63		
Protective Coat	Sq. Yd.	39		

- NOTES:**
- For location of Fluted Knee Wall, see Civil Drawings. Stations and offsets are measured from the @ S. Wentworth Ave. to the edge of the footing.
 - Reinforcement bar shall conform to the requirements of AASHTO M-31 or M-322 Grade 60.
 - Concrete: $f'c = 3500$ psi
 - At locations where Fluted Knee Wall abuts a rigid structure, a_2 " thick preformed expansion joint filler (PJF) conforming to the shape of the structure shall be installed between the wall and the structure. $\frac{3}{4}$ " PJF shall be installed where Fluted Knee Wall footing abuts curb and gutter. The cost shall be included in "Concrete Structures".
 - A protective coat shall be applied according to Section 503.19 of the Standard Specifications to all concrete surfaces not in contact with soil for Structural Detail 3.
 - 2" G.S. Conduit shall connect to existing handhole in shoulder. See Electrical drawings for details.
 - Chain Link Fence will not be paid for in this Contract, but shall be furnished and installed in Contract 63003.
 - For dimensions and details not shown in the sections, see Standard Knee Wall Details Sheet S1.
 - For n3(E) and n4(E) bar details, see Sheet S3.
 - Minimum lap for #4 bars shall be 1'-8".
 - BF = Back Face
EF = Each Face
FF = Front Face

Sheet S4 of 5



REVISIONS	
NAME	DATE

ILLINOIS DEPARTMENT OF TRANSPORTATION
F.A.I. 90/94 (DAN RYAN EXPRESSWAY)
63RD ST TO 59TH ST (NB AND SB KNEE WALLS)
STRUCTURAL DETAIL 3
RAMP 63B GORE
STA. 109+20.28 TO STA. 109+55.23
WENTWORTH AVENUE
SCALE: None DRAWN BY: CHD
DATE: JANUARY 14, 2009 CHECKED BY: MJP

AECOM