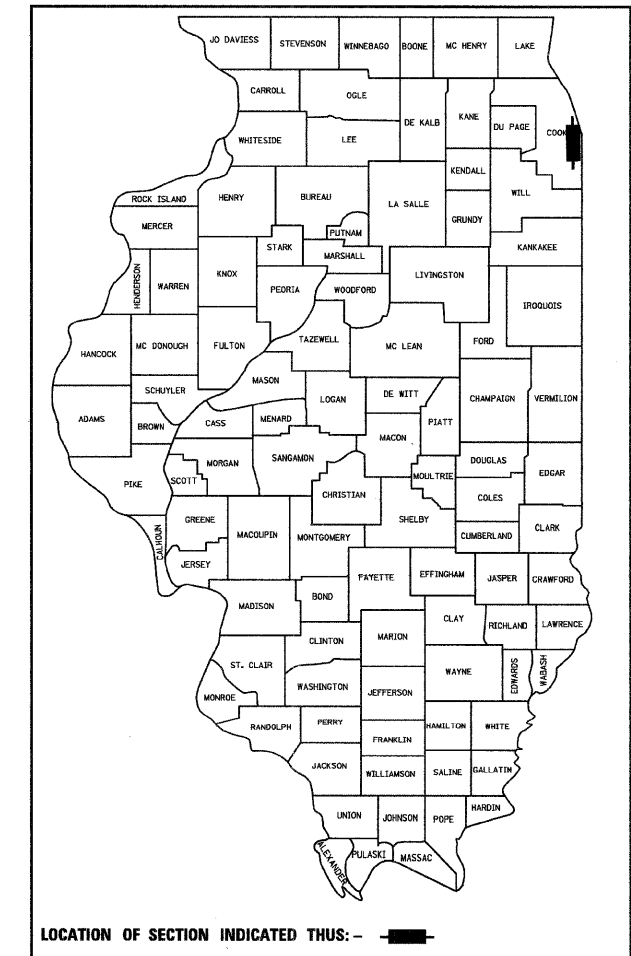


**STATE OF ILLINOIS
DEPARTMENT OF TRANSPORTATION
DIVISION OF HIGHWAYS**

**PLANS FOR PROPOSED
FEDERAL AID HIGHWAY**

**F.A.I. ROUTE 90/94 (DAN RYAN EXPRESSWAY)
SECTION (2021-922 PT1 & 2122-921 PT1) I-1
INSTALLATION OF FLUTED KNEE WALL ALONG WENTWORTH AVENUE
FROM 850-FEET SOUTH OF 47th STREET TO 47th STREET
COOK COUNTY
C-91-244-05**



INDEX OF SHEETS

SHEET	DESCRIPTION
1	COVER SHEET, INDEX OF SHEETS, LIST OF ILLINOIS DOT HIGHWAY STANDARDS
2	GENERAL NOTES AND PROJECT COMMITMENTS
3	SUMMARY OF QUANTITIES
4	EXISTING AND PROPOSED TYPICAL SECTIONS
5-13	ALIGNMENT PLANS, SURVEY TIES AND CONTROL POINTS
14-16	EXISTING AND PROPOSED ROADWAY PLANS
17-18	ROADWAY DETAILS
19	STRUCTURAL DETAILS
20	TC-17 DISTRICT 1, TRAFFIC CONTROL FOR SHOULDER CLOSURES AND PARTIAL RAMP CLOSURES
21	TC-18 DISTRICT 1, SIGNING FOR FLAGGING OPERATIONS AT WORK ZONE OPENINGS
22	TC-22 DISTRICT 1, ARTERIAL ROAD INFORMATION SIGN

DESIGN NUMBER

D-91-244-05

IDOT HIGHWAY STANDARDS

STANDARD	DESCRIPTION
000001-05	STANDARD SYMBOLS, ABBREVIATIONS, AND PATTERNS
001001-02	AREAS OF REINFORCEMENT BARS
001006	DECIMAL OF AN INCH AND OF A FOOT
664001-02	CHAIN LINK FENCE
701601-00	URBAN LANE CLOSURE, MULTILANE, 1W OR 2W WITH NONTRAVERSABLE MEDIAN
701901-01	TRAFFIC CONTROL DEVICES
720001-01	SIGN PANEL MOUNTING DETAILS
720006-02	SIGN PANEL ERECTION DETAILS

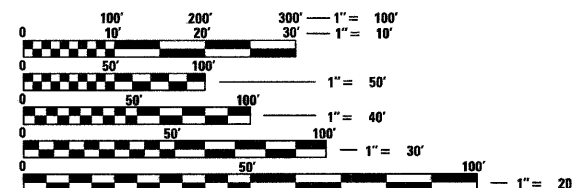
PROJECT LOCATED IN CITY OF CHICAGO

DESIGN DESIGNATION

WENTWORTH AVE: 6259 (20) URBAN COLLECTOR

ADT	DESIGN POSTED (2020) SPEED	DESIGN SPEED
11,000	30	25

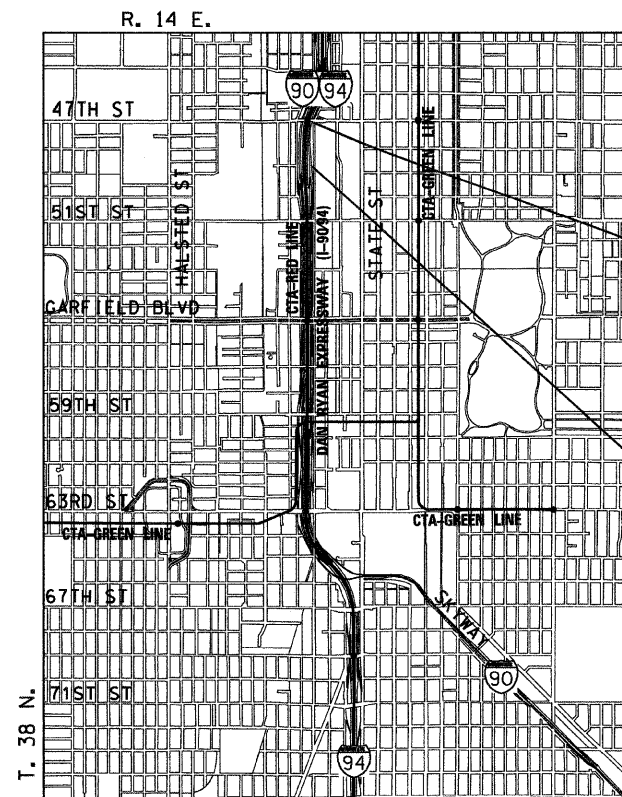
FRONTAGE ROADS:
WENTWORTH AVE 11,000 30 25



FULL SIZE PLANS HAVE BEEN PREPARED USING STANDARD ENGINEERING SCALES. REDUCED SIZED PLANS WILL NOT CONFORM TO STANDARD SCALES. IN MAKING MEASUREMENTS ON REDUCED PLANS, THE ABOVE SCALES MAY BE USED.

BEFORE EXCAVATING CALL:
CHICAGO UTILITY ALERT NETWORK
(312) 744-7000

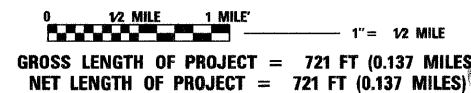
CONTRACT NO. 62986



PROJECT ENDS
S. WENTWORTH AVE
STA 208 + 90.55

PROJECT BEGINS
S. WENTWORTH AVE
STA 201 + 70.00

LOCATION MAP



ROBERT M. GOVEIA
062-055334
REGISTERED
PROFESSIONAL
ENGINEER
OF
ILLINOIS
Robert M. Goveia
ROBERT M. GOVEIA
01/02/2009 DATE 11/30/2009 EXPIRES

STATE OF ILLINOIS
DEPARTMENT OF TRANSPORTATION
DIVISION OF HIGHWAYS

SUBMITTED JANUARY 8, 2009

Diana M. O'Hanrahan
DEPUTY DIRECTOR OF HIGHWAYS, REGION ENGINEER

May 8, 2009
Charles J. Ingersoll
ENGINEER OF DESIGN AND ENVIRONMENT

May 8, 2009
Christine M. Reed
DIRECTOR OF HIGHWAYS, CHIEF ENGINEER

**PRINTED BY THE AUTHORITY
OF THE STATE OF ILLINOIS**



DISTRICT ONE DESIGNCONSULTANT SERVICES PROJECT MANAGER
RAJENDRA SHAH (847) 705-4555