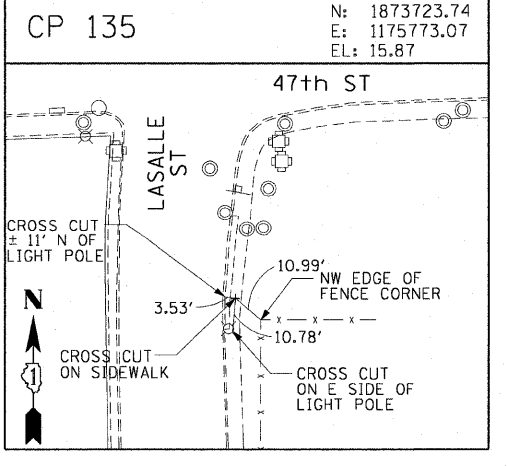
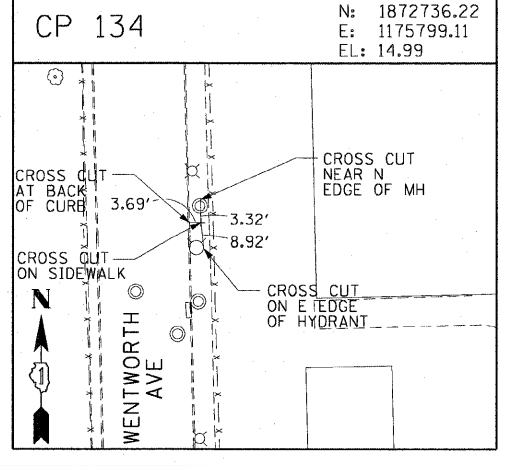
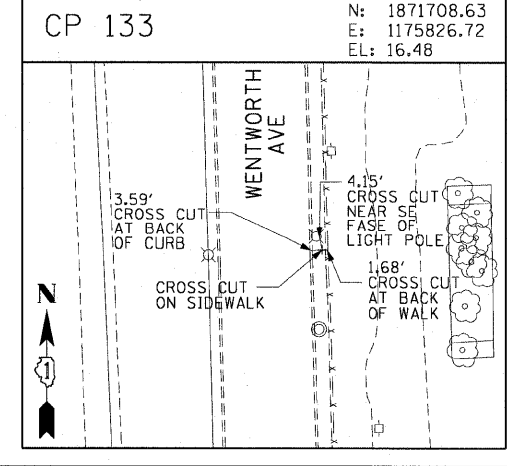
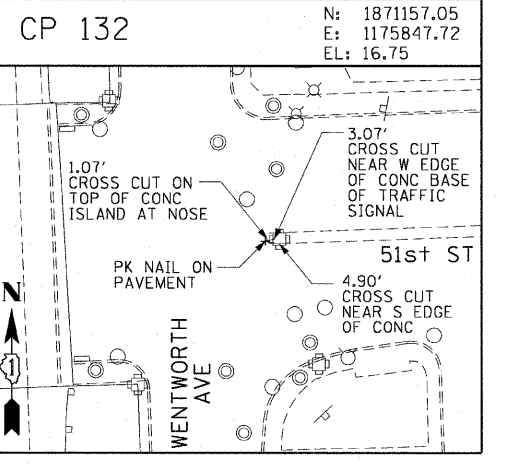
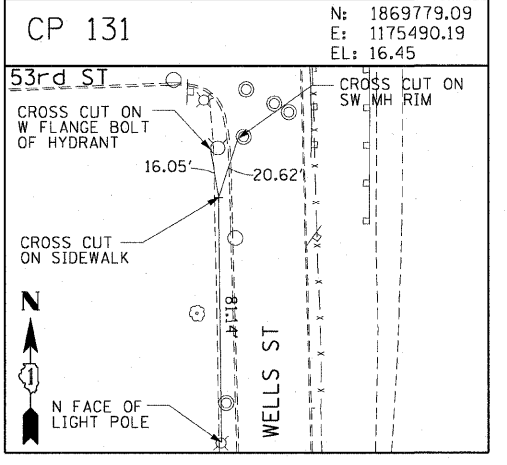
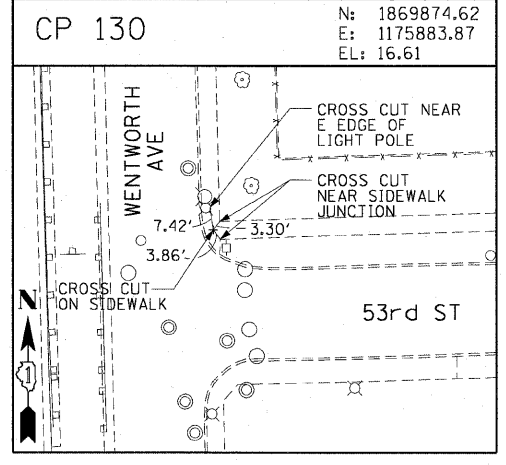
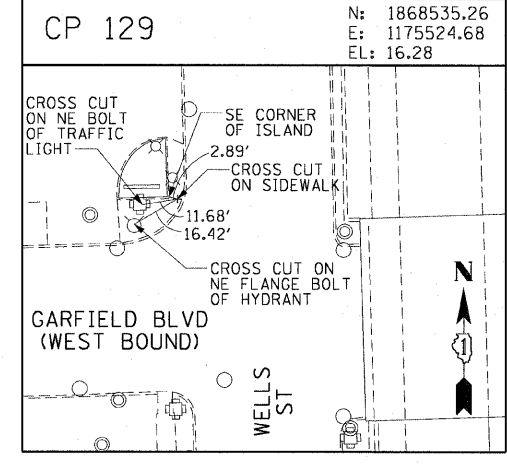
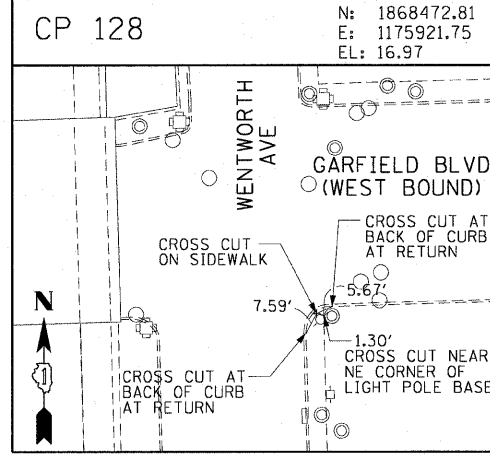
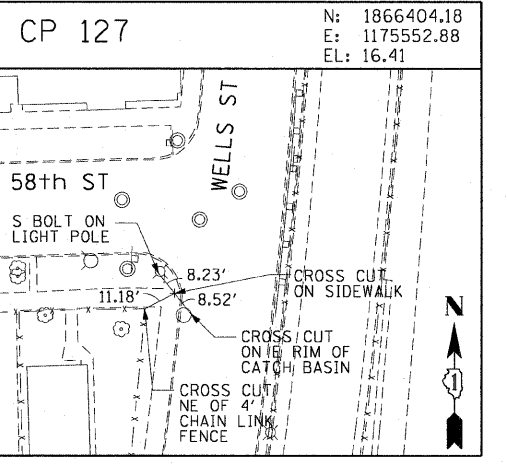
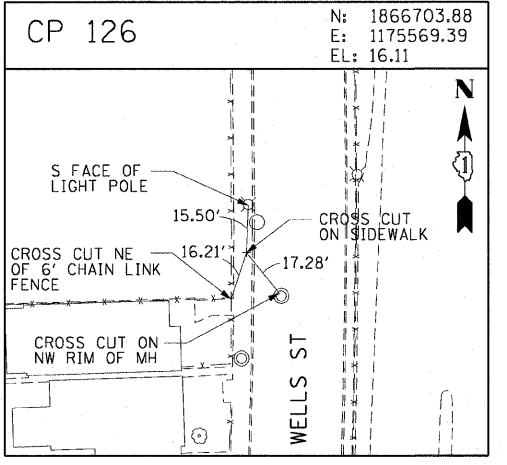
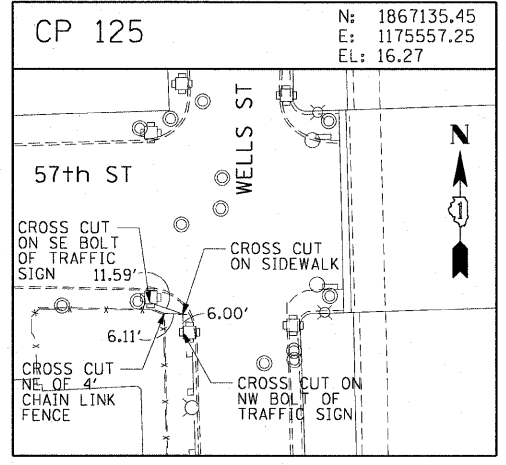
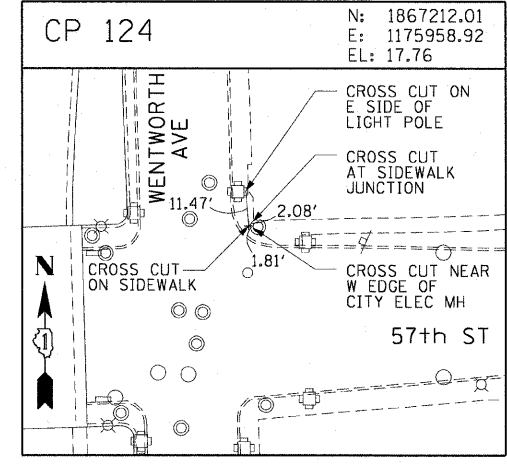
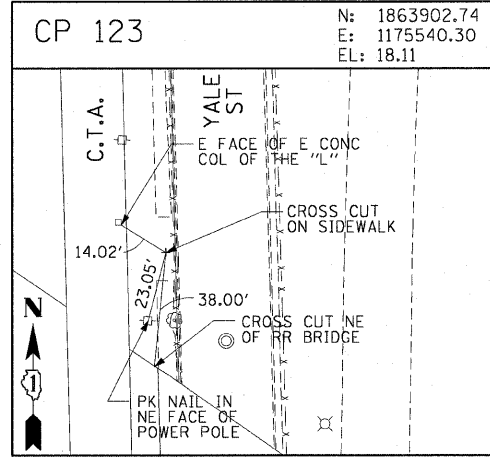
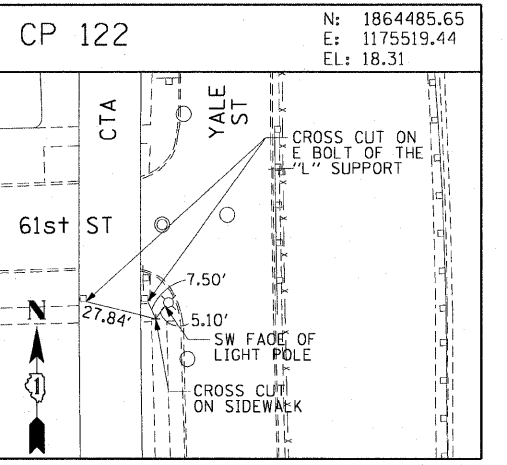
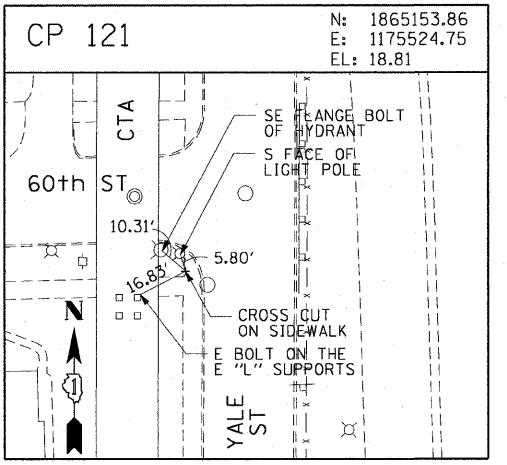
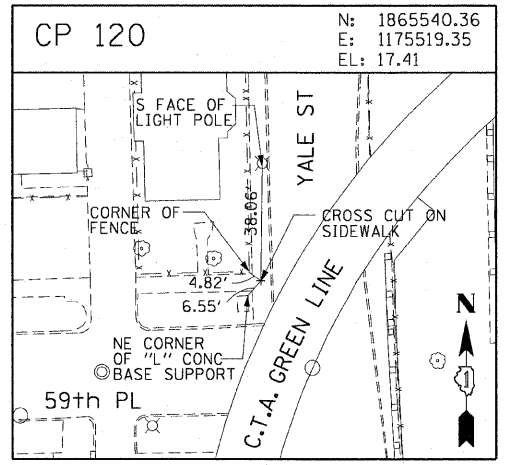
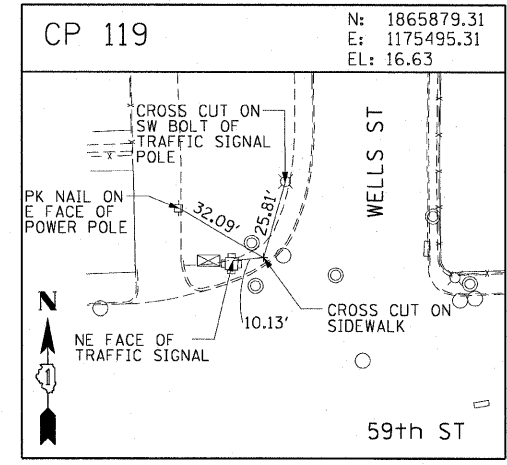
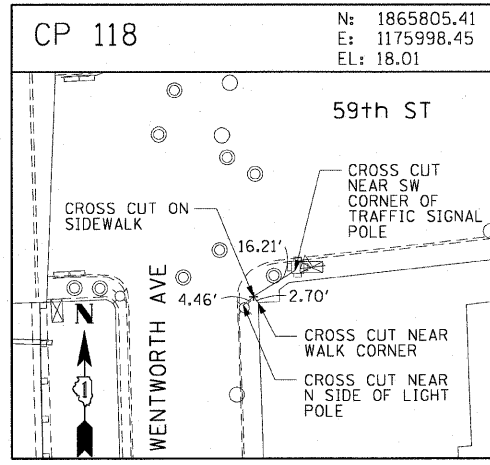


F.A.I. RTE.	SECTION	COUNTY	TOTAL SHEETS	SHEET NO.
90/94		COOK	22	11
STA.		TO STA.		
FED. ROAD DIST. NO. 1		ILLINOIS FED. AID PROJECT		
		* (2021-922 PT1 & 2122-921 PT1) 1-1 62986		



AECOM

REVISIONS	
NAME	DATE

ILLINOIS DEPARTMENT OF TRANSPORTATION
F.A.I. 90/94 (DAN RYAN EXPRESSWAY)
59th ST TO 47th ST (NORTHBOUND KNEE WALLS)

SURVEY TIES AND CONTROL POINTS

SCALE: 1"=30'
DATE: JANUARY 14, 2009

DRAWN BY: MRK
CHECKED BY: JAL

1/13/2009 12:08:42 PM \\ucsbjrp207\p0468\p0468\ch\1175\knee_wall_surveys\1175921.75\1175921.75.dwg