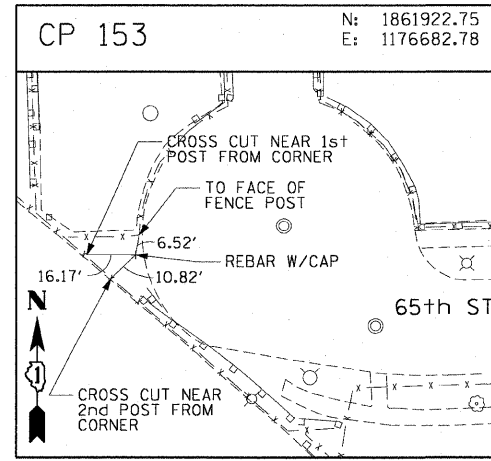
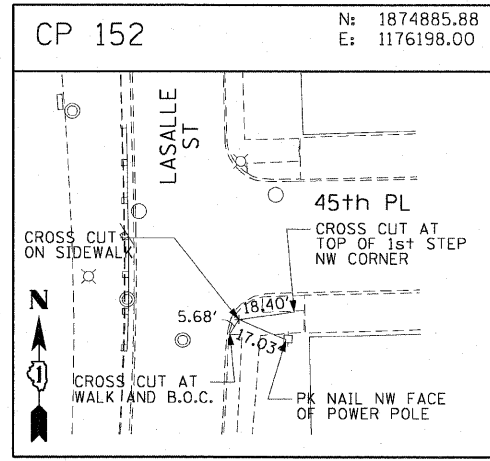
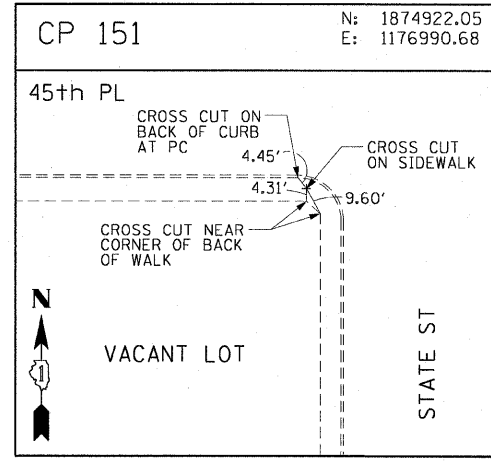
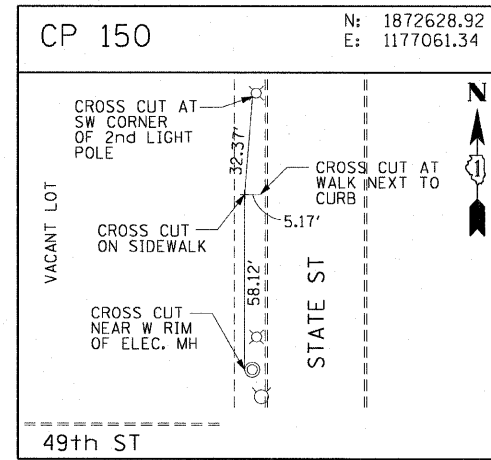
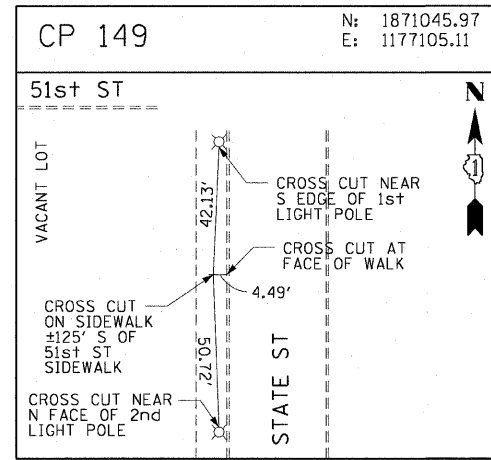
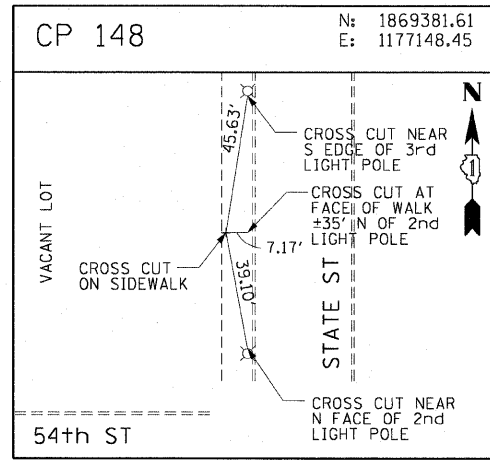
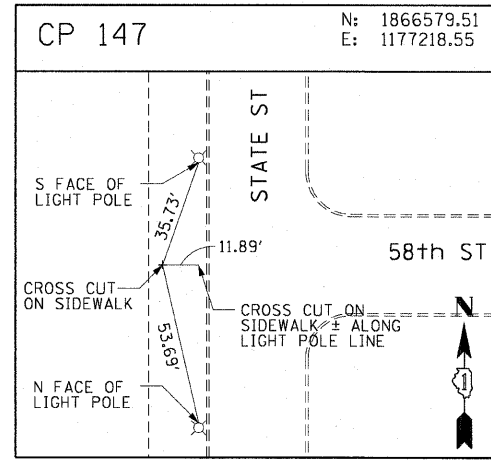
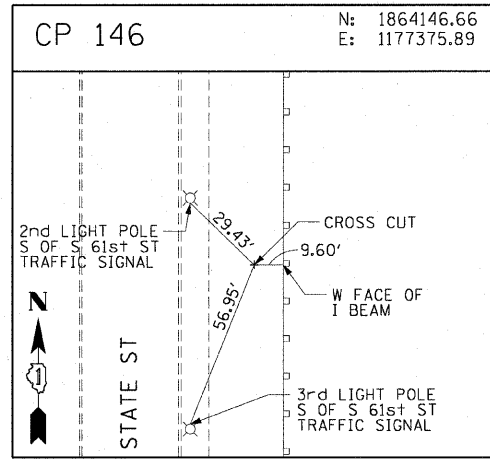
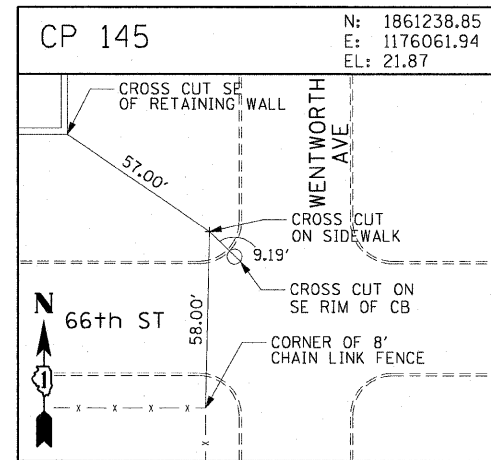
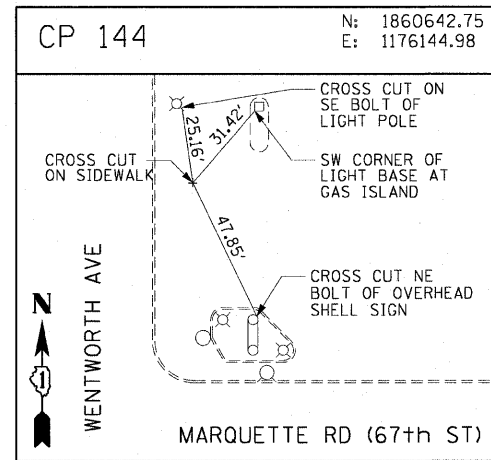
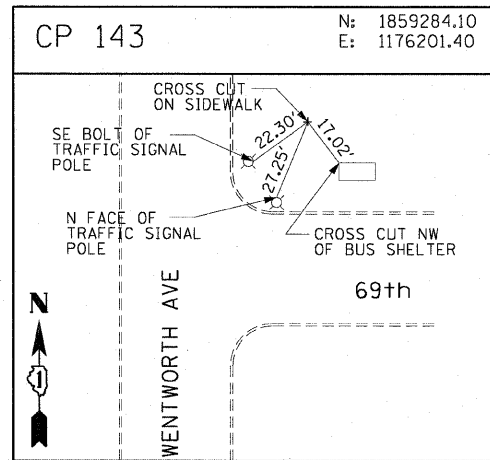
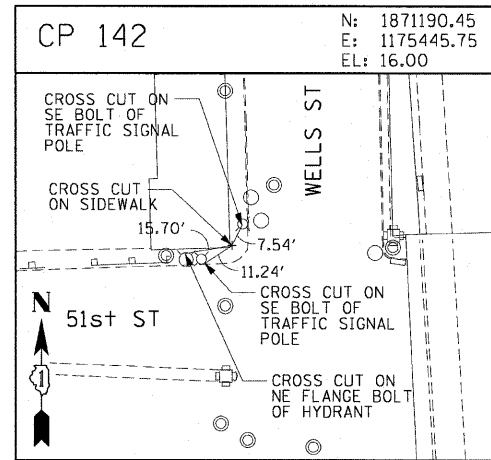
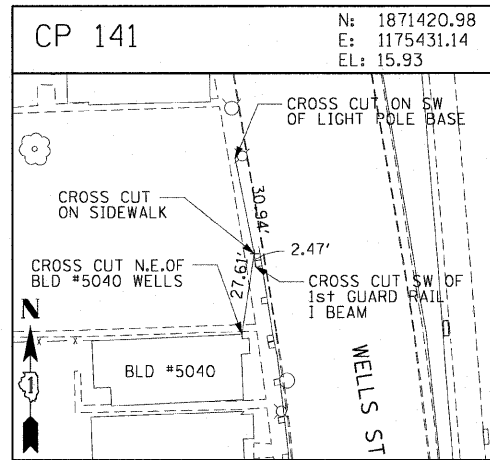
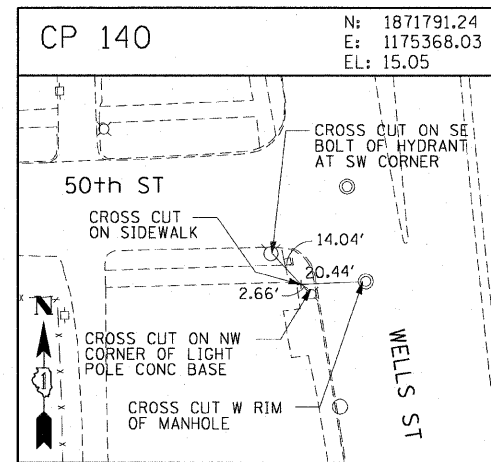
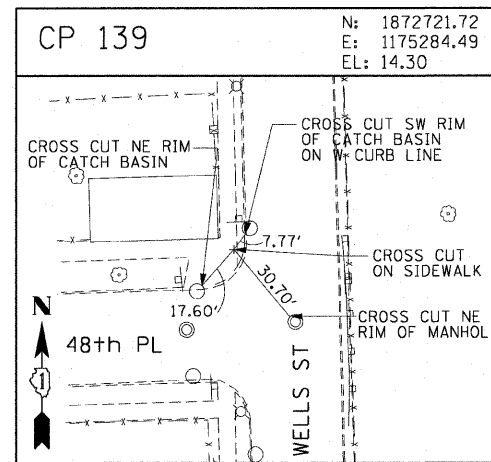
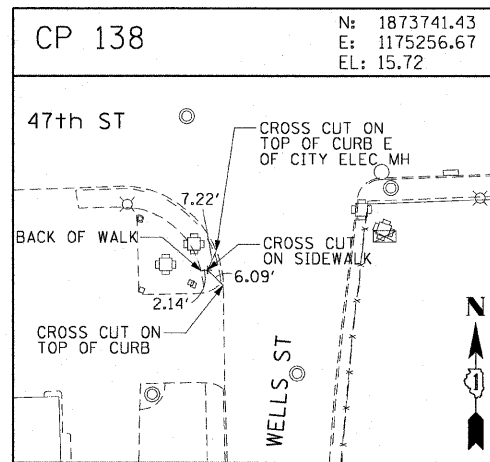
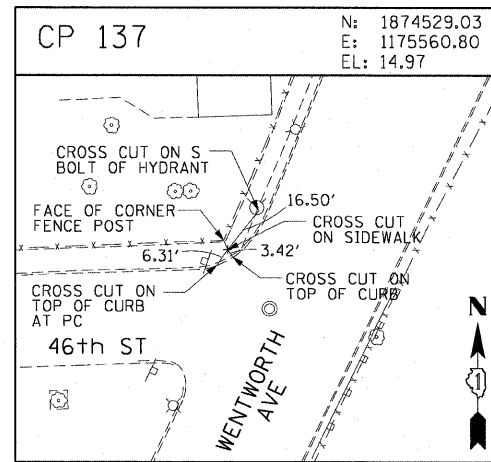
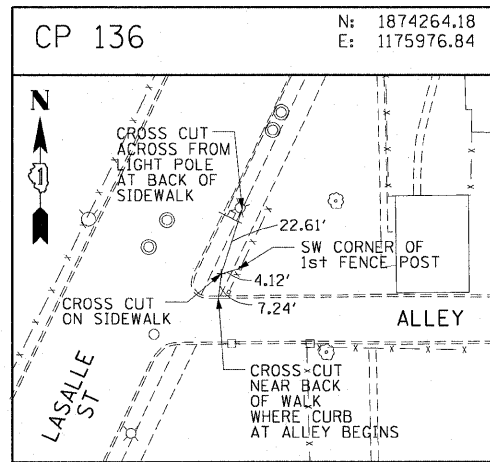


F.A.I. RTE.	SECTION	COUNTY	TOTAL SHEETS	SHEET NO.
90/94		COOK	22	12
STA.	TO STA.			
FED. ROAD DIST. NO. 1 ILLINOIS FED. AID PROJECT				
• (2021-922 PT1 & 2122-921 PT1) 1-1 62986				



REVISIONS	
NAME	DATE

ILLINOIS DEPARTMENT OF TRANSPORTATION
F.A.I. 90/94 (DAN RYAN EXPRESSWAY)
59TH ST TO 47TH ST (NORTHBOUND KNEE WALLS)

SURVEY TIES AND CONTROL POINTS

SCALE: 1"=30'
DATE: JANUARY 14, 2009

DRAWN BY: MRK
CHECKED BY: JAL

1/13/2009 12:08:43 PM \\scg\p207\c0\68\p\0468\civ\128\Free.Wall_Survey\Contract 25\CP136.dwg