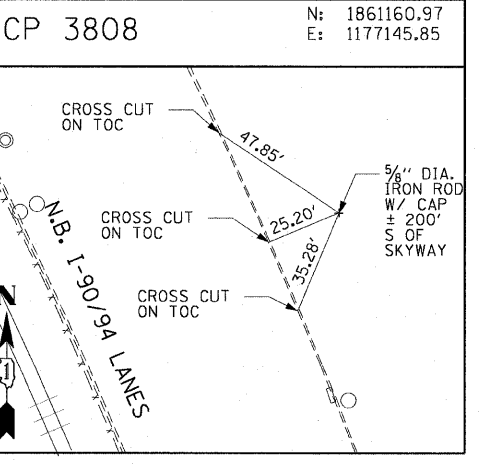
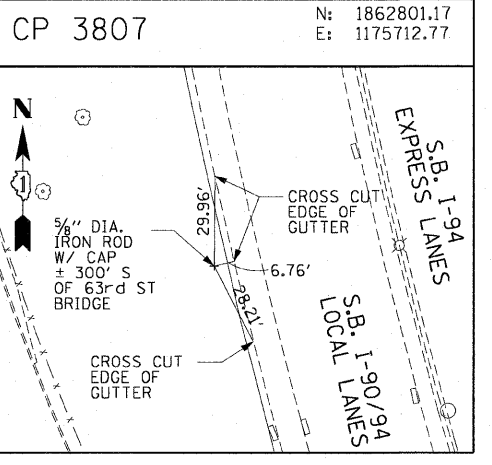
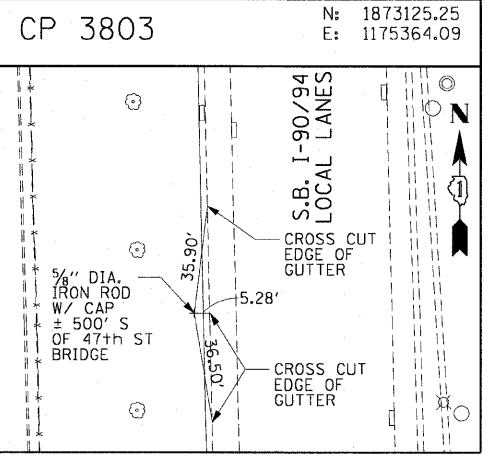
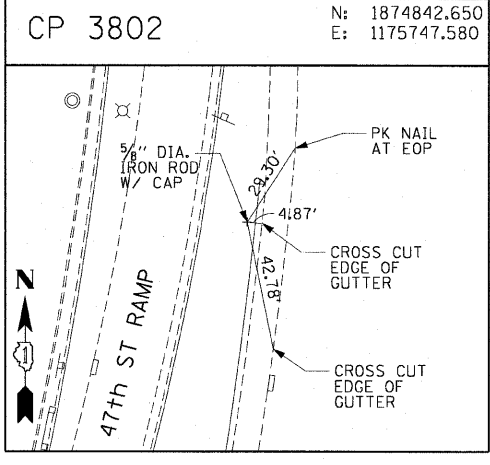
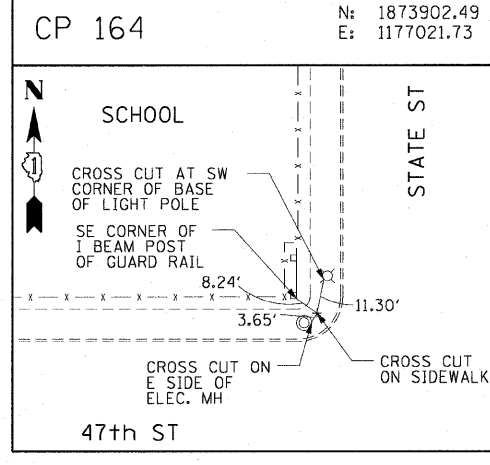
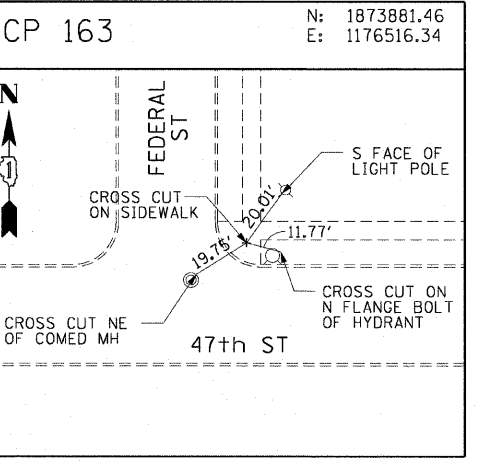
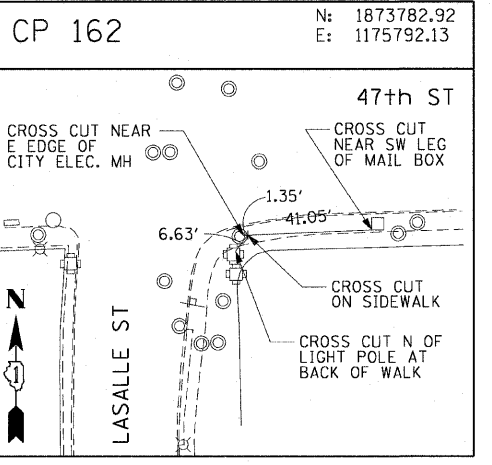
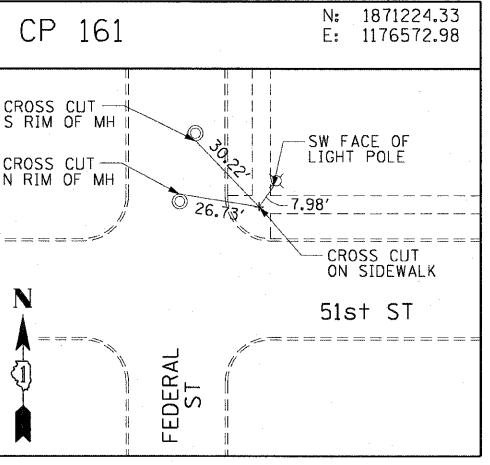
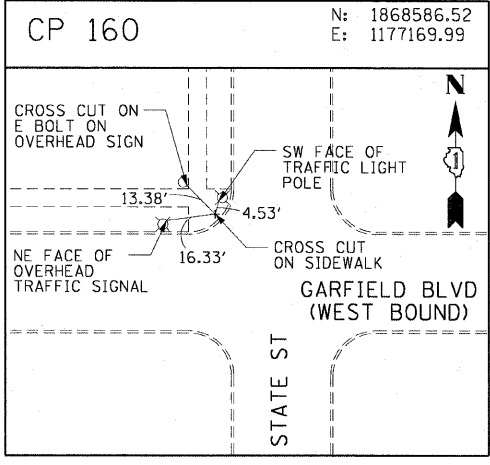
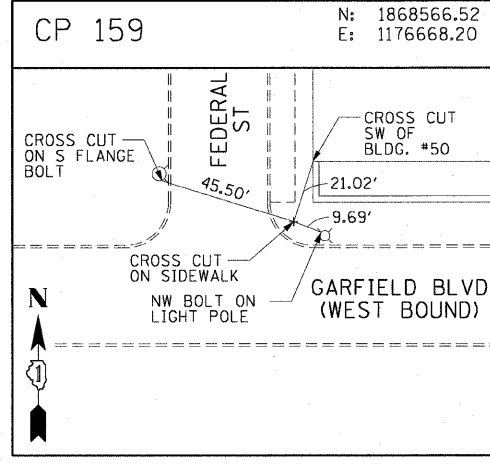
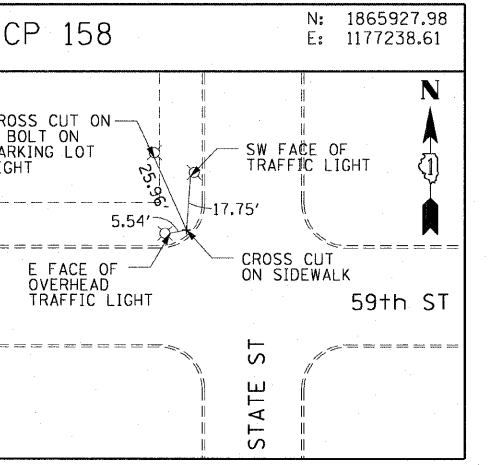
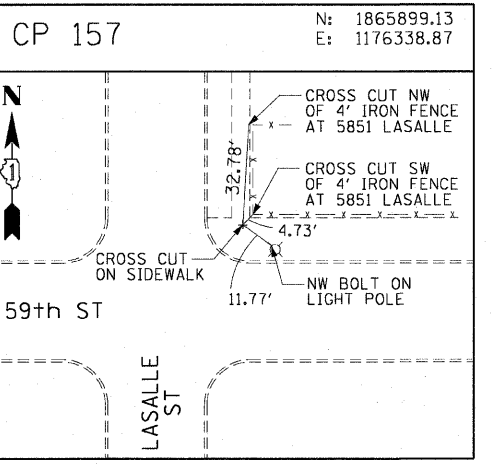
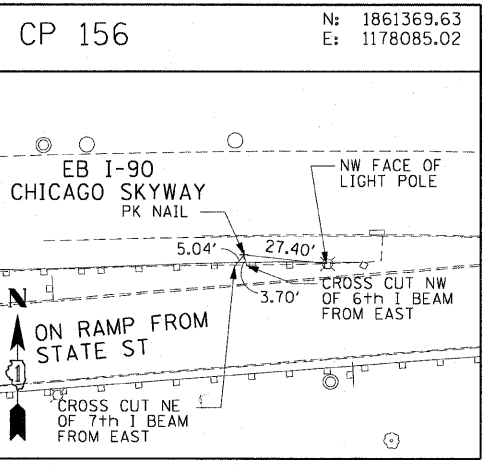
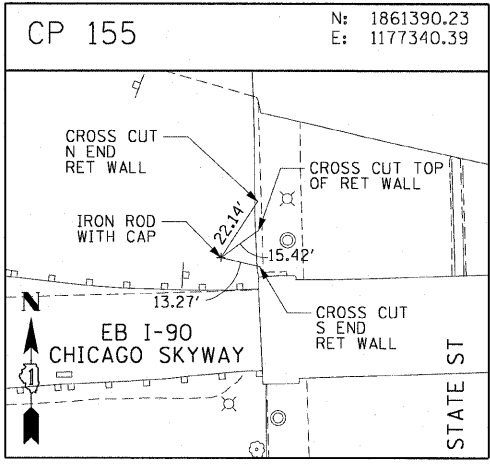
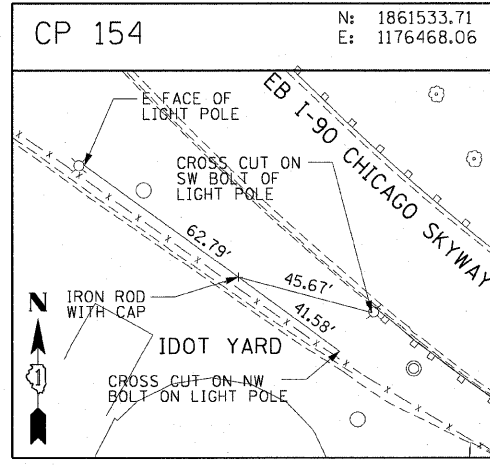


F.A.I. RTE.	SECTION	COUNTY	TOTAL SHEETS	SHEET NO.
90/94		COOK	22	13
STA.	TO STA.			
FED. ROAD DIST. NO. 1	ILLINOIS	FED. AID PROJECT		
* (2021-922 PT1 & 2122-921 PT1) 1-1				62986



AECOM

REVISIONS	
NAME	DATE

ILLINOIS DEPARTMENT OF TRANSPORTATION  
F.A.I. 90/94 (DAN RYAN EXPRESSWAY)  
59TH ST TO 47TH ST (NORTHBOUND KNEE WALLS)  
SURVEY TIES AND CONTROL POINTS  
SCALE: 1"=30'  
DATE: JANUARY 14, 2009  
DRAWN BY: MRK  
CHECKED BY: JAL

1/13/2009 12:08:43 PM \\scg\p201\p\0468\p\0468.ctb\1128-knee\_wall\_survey\1128-knee\_wall\_survey.dwg