
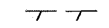

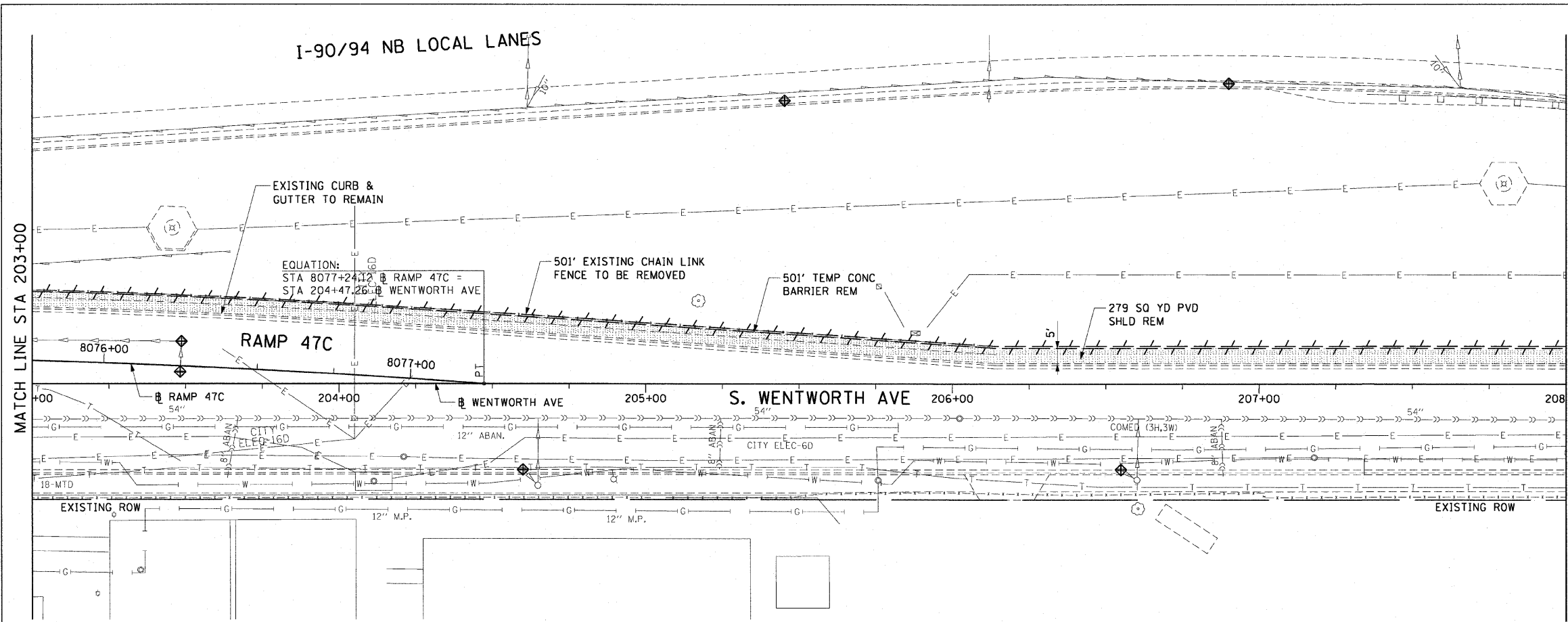


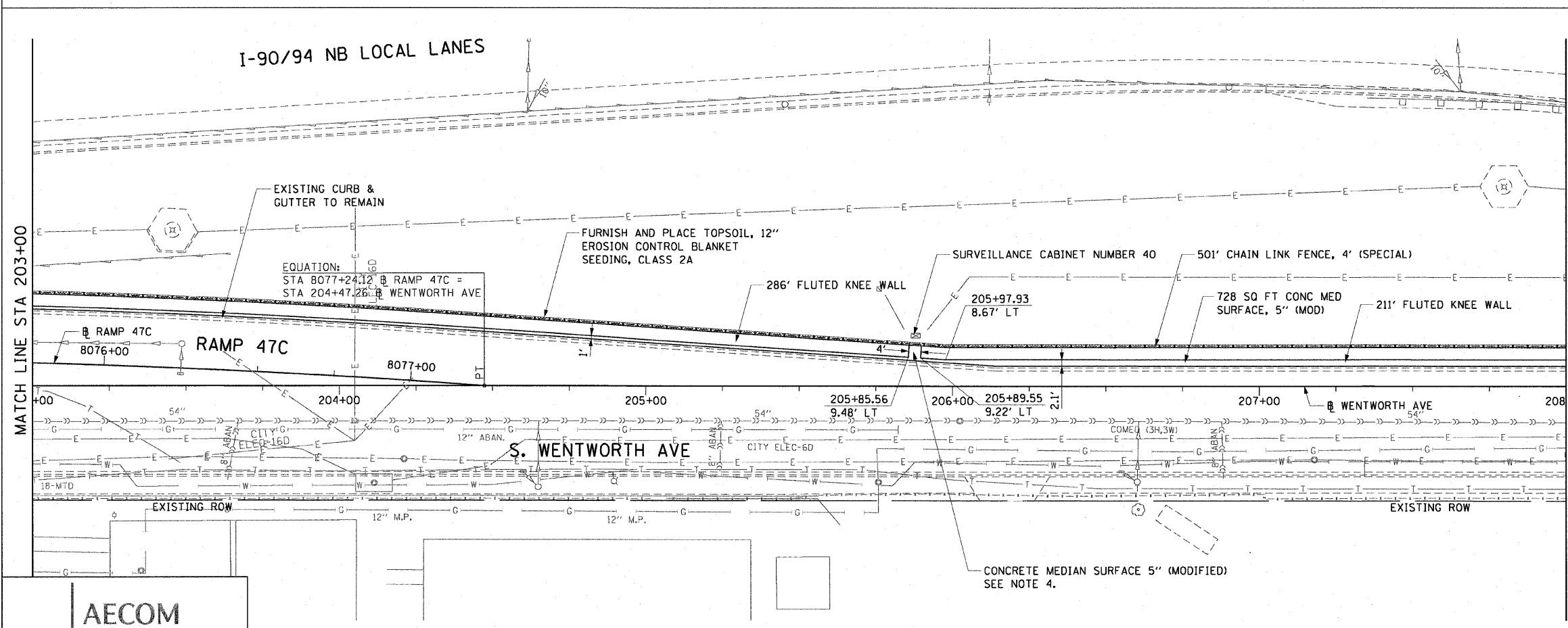
F.A.I. RTE.	SECTION	COUNTY	TOTAL SHEETS	SHEET NO.
90/94		COOK	22	15
STA. 203+00		TO STA. 208+00		
FED. ROAD DIST. NO. 1 ILLINOIS FED. AID PROJECT				
• (2021-922 PT1 & 2122-921 PT1) I-1 62986				

LEGEND:

-  AREA REMOVALS
-  LINEAR REMOVALS
-  INLET FILTER



EXISTING CONDITIONS AND REMOVAL  
PROPOSED IMPROVEMENTS



NOTES:

1. SEE STRUCTURAL DETAILS FOR FLUTED KNEE WALL DETAILS.
2. ALL POINT CALLOUTS ARE TAKEN AT THE EDGE OF THE KNEE WALL BASE.
3. SEE ROADWAY DETAILS FOR CONCRETE MEDIAN DETAILS.
4. THE GAP IN THE FLUTED KNEE WALL AT APPROXIMATELY STATION 205+87 SHALL BE IN LINE WITH SURVEILLANCE CABINET NUMBER 40.

REVISIONS	
NAME	DATE

ILLINOIS DEPARTMENT OF TRANSPORTATION  
F.A.I. 90/94 (DAN RYAN EXPRESSWAY)  
59TH ST TO 47TH ST (NORTHBOUND KNEE WALLS)  
  
EXISTING AND PROPOSED ROADWAY PLANS  
WENTWORTH AVENUE  
  
SCALE: 1"=20'  
DATE: JANUARY 14, 2009  
DRAWN BY: PHP  
CHECKED BY: NJH

AECOM

V:\sct\p1207\40468\40468.dwg\28 knee\_wall\_fence.dwg\contract 29\p290022.gstf 1/13/2009 12:08:49 PM