

ROADWAY\*\*  
 TRAFFIC SIGNALS\*\*  
 RAILROAD BRIDGE\*\*  
 CULVERTS\*\*  
 WEST SIDE BOULEVARD  
 RETAINING WALL  
 SN 045-2038  
 EAST SIDE BOULEVARD  
 RETAINING WALL  
 SN 045-2039  
 LANDSCAPING\*\*

CODE NUMBER	PAY ITEM	UNIT	TOTAL QUANTITY	CONSTRUCTION TYPE CODES								
				J00-2A	Y031-1F	X631	Y007	Y007	Y007	Y003		
60603800	COMBINATION CONCRETE CURB AND GUTTER, TYPE B-6.12	FOOT	45	45								
60605000	COMBINATION CONCRETE CURB AND GUTTER, TYPE B-6.24	FOOT	6,588	6588								
• 60618310	CONCRETE MEDIAN SURFACE, 4 INCH (SPECIAL)	SQ FT	5,181	5,181								
• 60619100	CONCRETE MEDIAN, TYPE SB (SPECIAL)	SQ FT	1,713	1,713								
△ 63000000	STEEL PLATE BEAM GUARD RAIL, TYPE A, 6 FOOT POSTS	FOOT	450	450								
△ 63100045	TRAFFIC BARRIER TERMINAL, TYPE 2	EACH	2	2								
• 63200305	STEEL PLATE BEAM GUARD RAIL REMOVAL	FOOT	629	629								
67100100	MOBILIZATION	L SUM	1	1								
• 70101800	TRAFFIC CONTROL AND PROTECTION, (SPECIAL)	L SUM	1	1								
70106800	CHANGEABLE MESSAGE SIGN	CAL MO	18	18								
70300100	SHORT TERM PAVEMENT MARKING	FOOT	400	400								
70300240	TEMPORARY PAVEMENT MARKING - LINE 6"	FOOT	809	809								
70301000	WORK ZONE PAVEMENT MARKING REMOVAL	SQ FT	3,173	3,173								
70400100	TEMPORARY CONCRETE BARRIER	FOOT	937.5	937.5								
70400200	RELOCATE TEMPORARY CONCRETE BARRIER	FOOT	1,950.0	1,950.0								
72000100	SIGN PANEL - TYPE 1	SQ FT	96.25	70.25	26							
72900200	METAL POST - TYPE B	FOOT	174	174								
△ 78000100	THERMOPLASTIC PAVEMENT MARKING - LETTERS AND SYMBOLS	SQ FT	110	110								
△ 78000200	THERMOPLASTIC PAVEMENT MARKING - LINE 4"	FOOT	7,772	7,772								
△ 78000400	THERMOPLASTIC PAVEMENT MARKING - LINE 6"	FOOT	694	694								
△ 78000600	THERMOPLASTIC PAVEMENT MARKING - LINE 12"	FOOT	551	551								
△ 78000650	THERMOPLASTIC PAVEMENT MARKING - LINE 24"	FOOT	77	77								
△ • 78008200	POLYUREA PAVEMENT MARKING TYPE I - LETTERS AND SYMBOLS	SQ FT	656	656								
△ • 78008210	POLYUREA PAVEMENT MARKING TYPE I - LINE 4"	FOOT	1,436	1,436								
△ • 78008230	POLYUREA PAVEMENT MARKING TYPE I - LINE 6"	FOOT	2,922	2,922								
△ • 78008240	POLYUREA PAVEMENT MARKING TYPE I - LINE 8"	FOOT	105	105								
△ • 78008250	POLYUREA PAVEMENT MARKING TYPE I - LINE 12"	FOOT	1,233	1,233								
△ • 78008270	POLYUREA PAVEMENT MARKING TYPE I - LINE 24"	FOOT	250	250								
△ 78100100	RAISED REFLECTIVE PAVEMENT MARKER	EACH	168	168								
△ 78200405	GUARDRAIL MARKERS	EACH	6	6								
△ 78201000	TERMINAL MARKER - DIRECT APPLIED	EACH	4	4								
△ 81000600	CONDUIT IN TRENCH, 2" DIA., GALVANIZED STEEL	FOOT	1,936		1936							
△ 81000700	CONDUIT IN TRENCH, 2 1/2" DIA., GALVANIZED STEEL	FOOT	263		263							
△ 81000800	CONDUIT IN TRENCH, 3" DIA., GALVANIZED STEEL	FOOT	109		109							
△ 81000900	CONDUIT IN TRENCH, 3 1/2" DIA., GALVANIZED STEEL	FOOT	17		17							
△ 81001000	CONDUIT IN TRENCH, 4" DIA., GALVANIZED STEEL	FOOT	742		742							
△ 81001100	CONDUIT IN TRENCH, 5" DIA., GALVANIZED STEEL	FOOT	10		10							
△ 81018500	CONDUIT PUSHED, 2" DIA., GALVANIZED STEEL	FOOT	77		77							
△ 81018900	CONDUIT PUSHED, 4" DIA., GALVANIZED STEEL	FOOT	213		213							
△ 81400100	HANDHOLE	EACH	8		8							
△ 81400200	HEAVY-DUTY HANDHOLE	EACH	4		4							
81400300	DOUBLE HANDHOLE	EACH	3		3							

• SPECIAL PROVISION      △ SPECIALTY ITEMS  
 •• 80% HPD 20% COUNTY  
 ••• 80% HPP 20% COUNTY

ROADWAY\*\*  
 TRAFFIC SIGNALS\*\*  
 RAILROAD BRIDGE\*\*  
 CULVERTS\*\*  
 McLEARN BOULEVARD  
 RETAINING WALL  
 S/L 045-2038  
 WEST SIDE  
 McLEARN BOULEVARD  
 RETAINING WALL  
 S/L 045-2038  
 EAST SIDE  
 McLEARN BOULEVARD  
 RETAINING WALL  
 S/L 045-2038  
 LANDSCAPING\*\*

CODE NUMBER	PAY ITEM	UNIT	TOTAL QUANTITY	CONSTRUCTION TYPE CODES						
				J00-2A	Y031-1F	X631	Y007	Y007	Y007	
△ 81900200	TRENCH AND BACKFILL FOR ELECTRICAL WORK	FOOT	2,378		2378					
△ 85700200	FULL-ACTUATED CONTROLLER AND TYPE IV CABINET	EACH	2		2					
△ 86000100	MASTER CONTROLLER	EACH	1		1					
△ 86400100	TRANSCEIVER - FIBER OPTIC	EACH	2		2					
△ 87301215	ELECTRIC CABLE IN CONDUIT, SIGNAL NO. 14 2C	FOOT	1,029		1029					
△ 87301225	ELECTRIC CABLE IN CONDUIT, SIGNAL NO. 14 3C	FOOT	1,829		1829					
△ 87301245	ELECTRIC CABLE IN CONDUIT, SIGNAL NO. 14 5C	FOOT	6,823		6823					
△ 87301255	ELECTRIC CABLE IN CONDUIT, SIGNAL NO. 14 7C	FOOT	3,192		3192					
△ 87301305	ELECTRIC CABLE IN CONDUIT, LEAD-IN, NO. 14 1 PAIR	FOOT	3,412		3412					
△ 87301805	ELECTRIC CABLE IN CONDUIT, SERVICE, NO. 6 2 C	FOOT	65		65					
△ 87502480	TRAFFIC SIGNAL POST, GALVANIZED STEEL 14 FT.	EACH	2		2					
△ 87502500	TRAFFIC SIGNAL POST, GALVANIZED STEEL 16 FT.	EACH	5		5					
△ 87502520	TRAFFIC SIGNAL POST, GALVANIZED STEEL 18 FT.	EACH	1		1					
△ 87700170	STEEL MAST ARM ASSEMBLY AND POLE, 26 FT.	EACH	1		1					
△ 87700240	STEEL MAST ARM ASSEMBLY AND POLE, 40 FT.	EACH	1		1					
△ 87700310	STEEL MAST ARM ASSEMBLY AND POLE, 54 FT.	EACH	1		1					
△ 87702985	STEEL COMBINATION MAST ARM ASSEMBLY AND POLE 52 FT.	EACH	1		1					
△ 87703020	STEEL COMBINATION MAST ARM ASSEMBLY AND POLE 58 FT.	EACH	1		1					
△ 87703030	STEEL COMBINATION MAST ARM ASSEMBLY AND POLE 60 FT.	EACH	1		1					
△ 87703090	STEEL COMBINATION MAST ARM ASSEMBLY AND POLE 70 FT.	EACH	1		1					
△ 87800100	CONCRETE FOUNDATION, TYPE A	FOOT	32		32					
△ 87800150	CONCRETE FOUNDATION, TYPE C	FOOT	4		4					
△ 87800200	CONCRETE FOUNDATION, TYPE D	FOOT	4		4					
△ 87800400	CONCRETE FOUNDATION, TYPE E 30-INCH DIAMETER	FOOT	15		15					
△ • 87800415	CONCRETE FOUNDATION, TYPE E 36-INCH DIAMETER	FOOT	45		45					
△ 88030020	SIGNAL HEAD, LED, 1-FACE, 3-SECTION, MAST-ARM MOUNTED	EACH	15		15					
△ 88030050	SIGNAL HEAD, LED, 1-FACE, 3-SECTION, BRACKET MOUNTED	EACH	2		2					
△ 88030100	SIGNAL HEAD, LED, 1-FACE, 5-SECTION, BRACKET MOUNTED	EACH	1		1					
△ 88030110	SIGNAL HEAD, LED, 1-FACE, 5-SECTION, MAST-ARM MOUNTED	EACH	6		6					
△ 88030210	SIGNAL HEAD, LED, 2-FACE, 3-SECTION, BRACKET MOUNTED	EACH	2		2					
△ 88030220	SIGNAL HEAD, LED, 2-FACE, 5-SECTION, BRACKET MOUNTED	EACH	1		1					
△ 88030240	SIGNAL HEAD, LED, 2-FACE, 1-3 SECTION, 1-5 SECTION, BRACKET MOUNTED	EACH	3		3					
△ 88102717	PEDESTRIAN SIGNAL HEAD, LED, 1-FACE, BRACKET MOUNTED WITH COUNTDOWN TIMER	EACH	6		6					
△ 88200210	TRAFFIC SIGNAL BACKPLATE, LOUVERED, ALUMINUM	EACH	21		21					
△ 88500100	INDUCTIVE LOOP DETECTOR	EACH	9		9					
△ 88600100	DETECTOR LOOP, TYPE I	FOOT	182		182					
△ • 88700200	LIGHT DETECTOR	EACH	8 ****		8					
△ • 88700300	LIGHT DETECTOR AMPLIFIER	EACH	2 ****		2					
△ 88800100	PEDESTRIAN PUSH-BUTTON	EACH	6		6					
△ 542A2785	PIPE CULVERTS, CLASS A, TYPE 4 60"	FOOT	22	22						
△ • K0038000	PERENNIAL PLANTS, WETLAND EMERGENT TYPE	UNIT	53.56							53.56
△ • K1004485	PERENNIAL PLANTS, WETLAND TYPE	UNIT	17.85							17.85

△ SPECIAL PROVISION      △ SPECIALTY ITEMS  
 •• 80% HPD 20% COUNTY  
 ••• 80% HPP 20% COUNTY      \*\*\*\* NON PARTICIPATING 100% KANE COUNTY DIVISION OF TRANSPORTATION

FILE NAME =  
 I:\Dgn\Civil\Sheet\sq005.dgn

USER NAME = thorton  
 PLOT SCALE = 1:1  
 PLOT DATE = 6/2/2009

DESIGNED -  
 DRAWN -  
 CHECKED -  
 DATE - 3/27/09

REVISED - 6-1-09 △  
 REVISED -  
 REVISED -  
 REVISED -

**KANE COUNTY  
 DIVISION OF TRANSPORTATION**

**NEW STEARNS ROAD - STAGE 2  
 SUMMARY OF QUANTITIES**  
 SCALE: NONE      SHEET NO. 1 OF 7 SHEETS      STA.      TO STA.

F.A.P. RTE.	SECTION	COUNTY	TOTAL SHEETS	SHEET NO.
361	06-00214-10-BR	KANE	219	8
FED. ROAD DIST. NO. 1 ILLINOIS FED. AID PROJECT			CONTRACT NO. 63073	

ROADWAY\*\*  
 TRAFFIC SIGNALS\*\*  
 RAILROAD BRIDGE\*\*  
 CULVERTS\*\*  
 WEST SIDE  
 MOLEMAN BOULEVARD  
 S/N 045-2038  
 EAST SIDE  
 MOLEMAN BOULEVARD  
 S/N 045-2039  
 LANDSCAPING\*\*

CODE NUMBER	PAY ITEM	UNIT	TOTAL QUANTITY	CONSTRUCTION TYPE CODES						
				J00-2A	Y031-1F	X631	Y007	Y007	Y003	
• X0321809	PERMANENT GROUND ANCHOR	EACH	95					35	60	
• X0322671	STABILIZED CONSTRUCTION ENTRANCE	SQ YD	150	150						
• X0322925	ELECTRIC CABLE IN CONDUIT, TRACER, NO. 14 1C	FOOT	948		948					
• X0323260	SEDIMENT BASIN	EACH	1	1						
• X0323426	SEDIMENT CONTROL, DRAINAGE STRUCTURE INLET FILTER CLEANING	EACH	4	4						
• X0323670	PREFORMED DETECTOR LOOP	FOOT	245		245					
• X0323973	SEDIMENT CONTROL, SILT FENCE	FOOT	7,595	7,595						
• X0323974	SEDIMENT CONTROL, SILT FENCE MAINTENANCE	FOOT	7,595	7,595						
• X0324045	SEDIMENT CONTROL, STABILIZED CONSTRUCTION ENTRANCE REMOVAL	EACH	1	1						
• X0324455	DRILLING AND SETTING SOLDIER PILES (IN SOIL)	CU FT	5,617					2,404	3213	
• X0324456	DRILLING AND SETTING SOLDIER PILES (IN ROCK)	CU FT	70					50	20	
• X0324774	SEDIMENT CONTROL, STABILIZED CONSTRUCTION ENTRANCE	SQ YD	150	150						
• X0324775	SEDIMENT CONTROL, STABILIZED CONSTRUCTION ENTRANCE MAINTENANCE	SQ YD	150	150						
• X0325096	OPTIMIZE TRAFFIC SIGNAL SYSTEM	EACH	1		1					
• X0325346	RAILROAD TRACK	TR FT	1,082	1,082						
• X0325355	RAILROAD TRACK, REMOVE	TR FT	2,397	2,397						
• X0325775	WET REFLECTIVE TEMPORARY TAPE, TYPE III, 4 INCH	FOOT	7,333	7,333						
• X0325840	WET REFLECTIVE TEMPORARY TAPE TYPE III, 12 INCH	FOOT	476	476						
• X0712400	TEMPORARY PAVEMENT	SQ YD	1,421	1,421						
• X2510635	HEAVY DUTY EROSION CONTROL BLANKET, SPECIAL (P550)	SQ YD	2,361	2361						
• X4023000	TEMPORARY ACCESS (ROAD)	EACH	1	1						
• X8050015	SERVICE INSTALLATION - POLE MOUNTED	EACH	2		2					
• X8620020	UNINTERRUPTIBLE POWER SUPPLY	EACH	1		1					
• X8710020	FIBER OPTIC CABLE IN CONDUIT, NO. 62.5/125, MM12F SM12F	FOOT	974		974					
• X8730027	ELECTRIC CABLE IN CONDUIT, GROUNDING, NO. 6 1C	FOOT	1,475		1475					
• X8730250	ELECTRIC CABLE IN CONDUIT NO. 20 3/C, TWISTED, SHIELDED	FOOT	2,159		2159					
• XX003503	FLARED END SECTION REMOVAL	EACH	2	2						
• XX004848	STONE DRIVEWAY REPLACEMENT	SQ YD	80	80						
• X7011005	TRAFFIC CONTROL & PROTECTION FOR TEMPORARY DETOUR	L SUM	1	1						
• XX005723	VIDEO DETECTION SYSTEM COMPLETE INTERSECTION	EACH	1		1					
• XX006128	TRAFFIC BARRIER TERMINAL TYPE 1 (SPECIAL )	EACH	2	2						
• XX006338	EROSION CONTROL BLANKET SPECIAL (S150BN)	SQ YD	1,333	1333						
• XX006628	FILTER FABRIC - INLET PROTECTION	EACH	21	21						
• XX006698	TREE PROTECTION AND PRESERVATION	EACH	3	3						
• XX006701	SEEDING, CLASS 4 (MODIFIED) MESIC PRAIRIE	ACRE	4.33							4.33
• XX006702	SEEDING, CLASS 4 (MODIFIED) WET TO MESIC PRAIRIE	ACRE	0.79							0.79
• XX006706	SEEDING, CLASS 4 (MODIFIED) DETENTION BASIN	ACRE	0.30							0.30
• XX006709	SEEDING, CLASS 5 (MODIFIED) MESIC PRAIRIE	ACRE	4.33							4.33
• XX006710	SEEDING, CLASS 5 (MODIFIED) WET TO MESIC PRAIRIE	ACRE	0.79							0.79
• Z0001050	AGGREGATE SUBGRADE 12"	SQ YD	20,835	20,835						
• Z0002300	BALLAST	CU YD	1,776	1,776						
• Z0007601	BUILDING REMOVAL NO. 1	L SUM	1	1						

• SPECIAL PROVISION      △ SPECIALTY ITEMS  
 \*\* 80% HPD 20% COUNTY  
 \*\*\* 80% HPP 20% COUNTY

FILE NAME = I:\Dgn\Civil\Sheet\sq006.dgn	USER NAME = thornston	DESIGNED -	REVISED - 6-1-09 △
PLOT SCALE = 1/4"	CHECKED -	REVISOR -	DATE - 3/27/09
PLOT DATE = 6/1/2009	DATE -	REVISED -	

**KANE COUNTY  
 DIVISION OF TRANSPORTATION**

**NEW STEARNS ROAD - STAGE 2  
 SUMMARY OF QUANTITIES**

SCALE: NONE      SHEET NO. 1 OF 7 SHEETS      STA.      TO STA.

F.A.P. RTE. 361	SECTION 06-00214-10-BR	COUNTY KANE	TOTAL SHEETS 219	SHEET NO. 9
FED. ROAD DIST. NO. 1			ILLINOIS FED. AID PROJECT	
CONTRACT NO. 63073				

ROADWAY\*\*  
 TRAFFIC SIGNALS\*\*  
 RAILROAD BRIDGE\*\*  
 CULVERTS\*\*  
 WEST SIDE BOLLIVARD  
 NO. EAST BOLLIVARD  
 S/N 045-203B  
 S/N 045-203C  
 EAST SIDE BOLLIVARD  
 NO. EAST BOLLIVARD  
 S/N 045-203D  
 LANDSCAPING\*\*

CODE NUMBER	PAY ITEM	UNIT	TOTAL QUANTITY	CONSTRUCTION TYPE CODES					
				J00-2A	Y031-1F	X631	Y007	Y007	Y003
* Z0007602	BUILDING REMOVAL NO. 2	L SUM	1	1					
* Z0013798	CONSTRUCTION LAYOUT	L SUM	1	1					
* Z0022800	FENCE REMOVAL	FOOT	1,024	1,024					
* Z0030260	IMPACT ATTENUATORS, TEMPORARY (FULLY REDIRECTIVE, NARROW), TEST LEVEL 3	EACH	6	6					
* Z0041700	PLUG EXISTING STORM SEWERS	EACH	1	1					
* Z0048665	RAILROAD PROTECTIVE LIABILITY INSURANCE	L SUM	1	1					
* Z0069700	SUB-BALLAST	CU YD	2,131	2,131					
* Z0076600	TRAINEES	HOURL	5,000	5,000					
44002248	HOT-MIX ASPHALT REMOVAL OVER PATCHES, 12"	SQ YD	330	330					
* XX008014	TEMPORARY RAILROAD EMBANKMENT	CU YD	36,310	36,310					
* 87800420	CONCRETE FOUNDATION, TYPE E 42-INCH DIAMETER	FOOT	75		75				
* XX008015	SITE ACCESS CONTROL	L SUM	1	1					
* XX008016	SPHERICAL BEARINGS BOOK - EXPANSION	EACH	2			2			
* XX008017	SPHERICAL BEARINGS BOOK - FIXED	EACH	2			2			
* XX008018	TEMPORARY SOIL RETENTION SYSTEM	L SUM	1			1			
* XX008019	UNINTERRUPTIBLE POWER SUPPLY (SPECIAL KDOT)	EACH	1			1			
* ROADWAY SWEEPING (SPECIAL)		EACH	450	450					

\* SPECIAL PROVISION  
 \*\* 80% HPD 20% COUNTY  
 \*\*\* 80% HPP 20% COUNTY

△ SPECIALTY ITEMS  
 ^ Y080

FILE NAME =  
 In:\Dgn\Civil\Sheet\sq207.dgn

USER NAME = tthornton	DESIGNED -	REVISED - 6-1-09
PLOT SCALE = 1:1	DRAWN -	REVISED -
PLOT DATE = 6/1/2009	CHECKED -	REVISED -
	DATE - 3/27/09	REVISED -

**KANE COUNTY  
 DIVISION OF TRANSPORTATION**

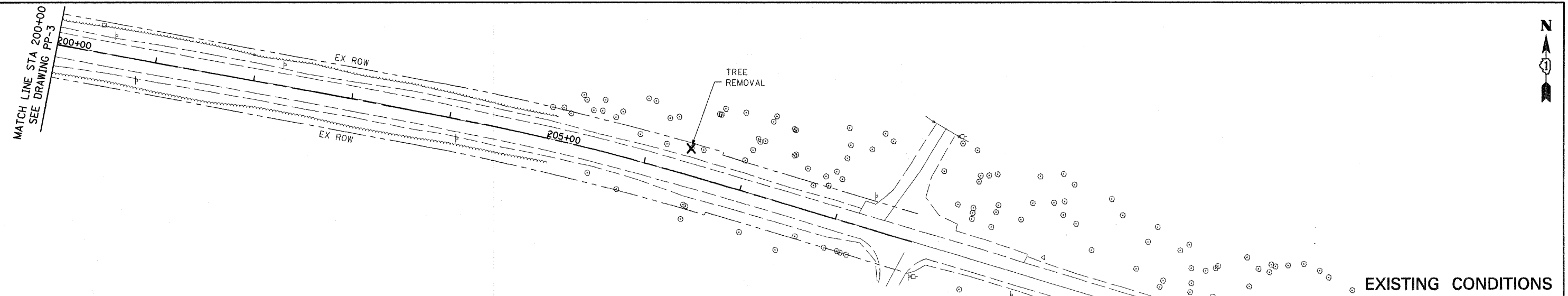
**NEW STEARNS ROAD - STAGE 2  
 SUMMARY OF QUANTITIES**

SCALE: NONE SHEET NO. 1 OF 7 SHEETS STA. TO STA.

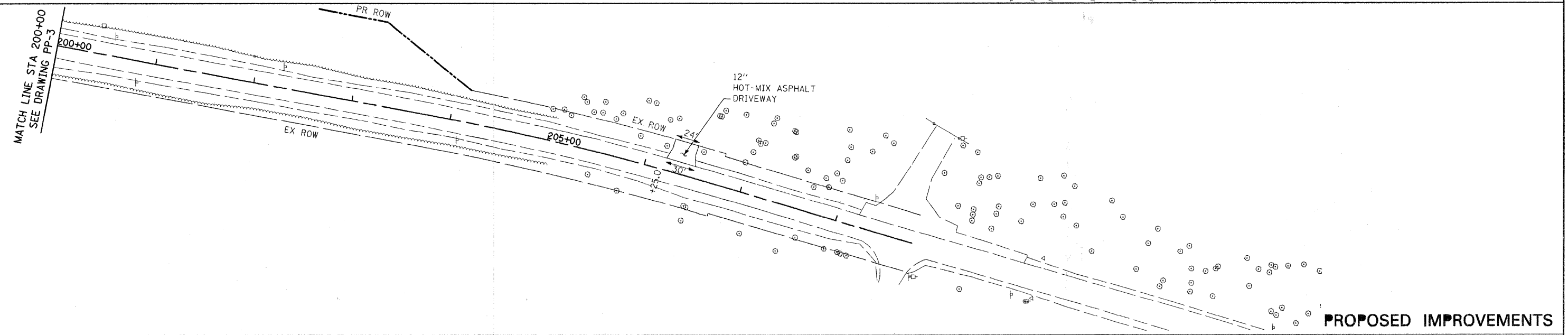
F.A.P. RTE.	SECTION	COUNTY	TOTAL SHEETS	SHEET NO.
361	06-00214-10-BR	KANE	219	10
CONTRACT NO. 63073				
FED. ROAD DIST. NO. 1 ILLINOIS FED. AID PROJECT				



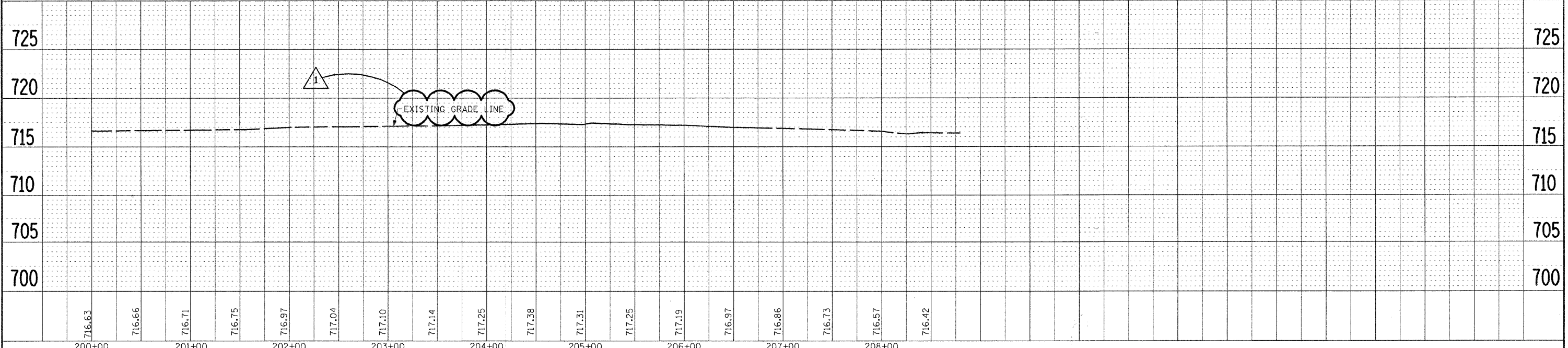




EXISTING CONDITIONS



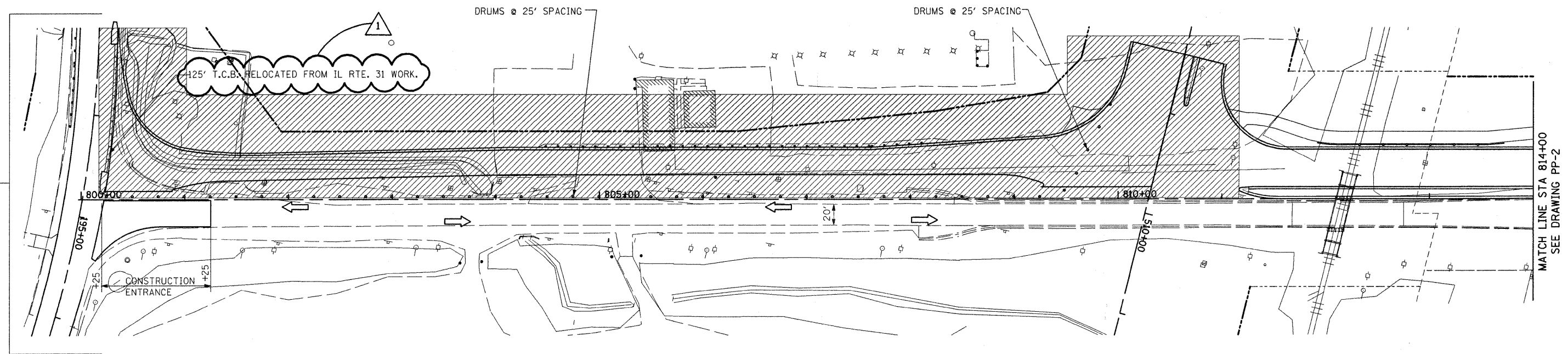
PROPOSED IMPROVEMENTS



PLAN	DATE
SUBMITTER	BY
DESIGNED	DATE
DRAWN	DATE
CHECKED	DATE
APPROVED	DATE
NO.	NO.

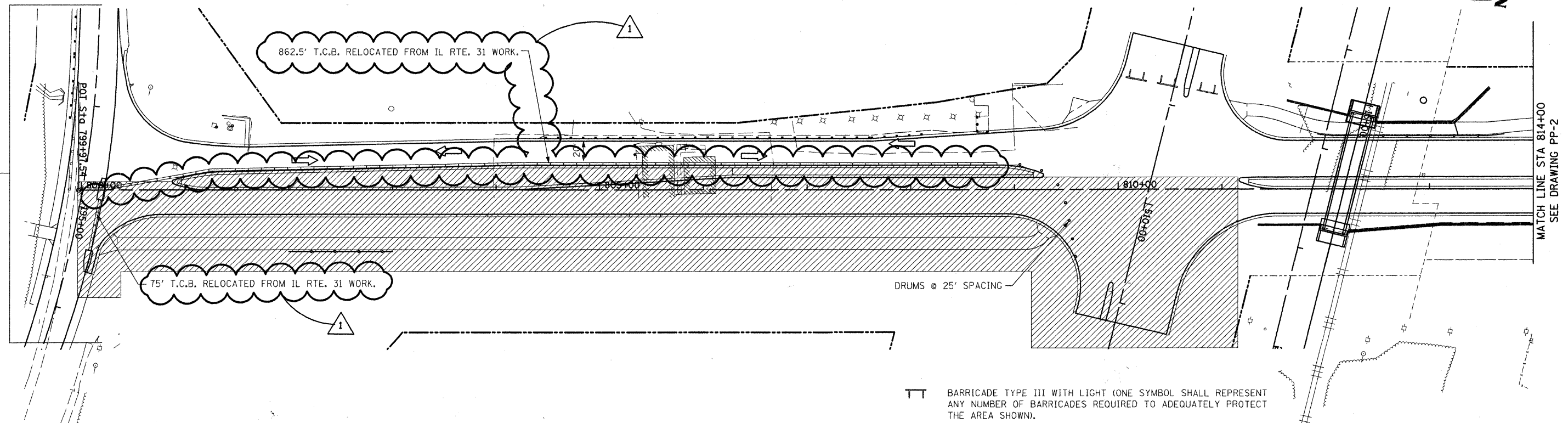
PROFILE	DATE
SUBMITTER	BY
DESIGNED	DATE
DRAWN	DATE
CHECKED	DATE
APPROVED	DATE
NO.	NO.

FILE NAME = I:\Dgn\Civil\Sheet\pp004.dgn	USER NAME = tthornton	DESIGNED - DRAWN - CHECKED - DATE - 3/27/09	REVISED - 6-1-09 REVISED - REVISED - REVISED -	<b>KANE COUNTY DIVISION OF TRANSPORTATION</b>	<b>NEW STEARNS ROAD - STAGE 2 PLAN AND PROFILE - ILLINOIS ROUTE 31</b>	F.A.P. RTE. 361	SECTION 06-00214-10-BR	COUNTY KANE	TOTAL SHEETS 219	SHEET NO. 20	CONTRACT NO. 63073
PLOT SCALE = 1/8"=50'						SCALE: 1"=50'H; 1"=5'V	SHEET NO. OF SHEETS STA. TO STA.	FED. ROAD DIST. NO. 1 ILLINOIS FED. AID PROJECT			



STAGE I

FOR CONSTRUCTION STAGING SIGNING,  
SEE DETOUR PLAN SHEET MT-5



STAGE II

⊥ BARRICADE TYPE III WITH LIGHT (ONE SYMBOL SHALL REPRESENT ANY NUMBER OF BARRICADES REQUIRED TO ADEQUATELY PROTECT THE AREA SHOWN).

▨ WORK ZONE

➔ TRAFFIC DIRECTION

— TEMPORARY CONCRETE BARRIER

◡ IMPACT ATTENUATOR, TEMPORARY (FULLY REDIRECTIVE, NARROW) TEST LEVEL 3

FILE NAME =  
i:\dgn\civ11\sheet\mt02.dgn

USER NAME = tthornton

DESIGNED -

DRAWN -

CHECKED -

DATE - 3/27/09

REVISED - 6-1-09

REVISED -

REVISED -

REVISED -

**KANE COUNTY  
DIVISION OF TRANSPORTATION**

**NEW STEARNS ROAD - STAGE 2  
MAINTENANCE OF TRAFFIC - McLEAN BOULEVARD**

SCALE: SHEET NO. OF SHEETS STA. TO STA.

F.A.P. RTE.	SECTION	COUNTY	TOTAL SHEETS	SHEET NO.
361	06-00214-10-BR	KANE	219	24
FED. ROAD DIST. NO. 1 ILLINOIS FED. AID PROJECT			CONTRACT NO. 63073	



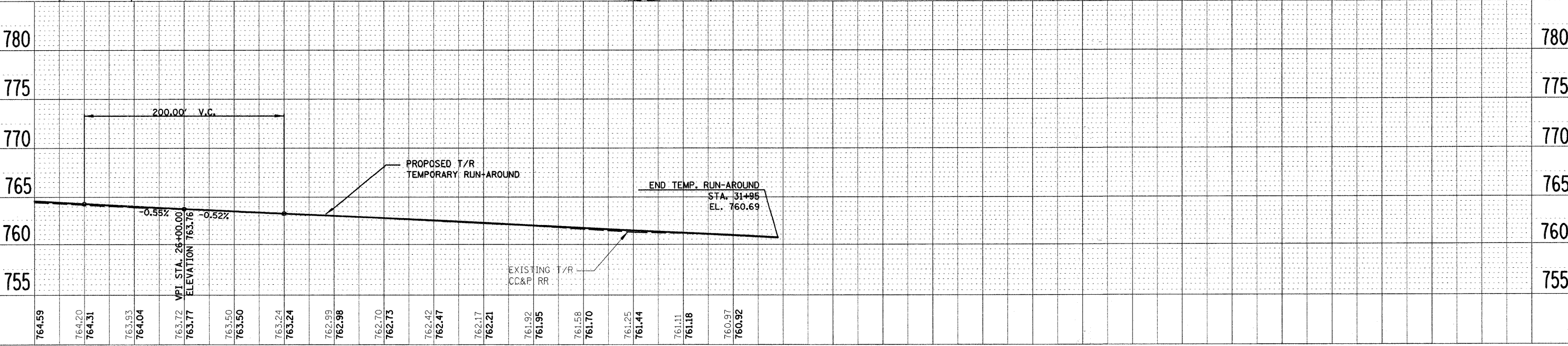
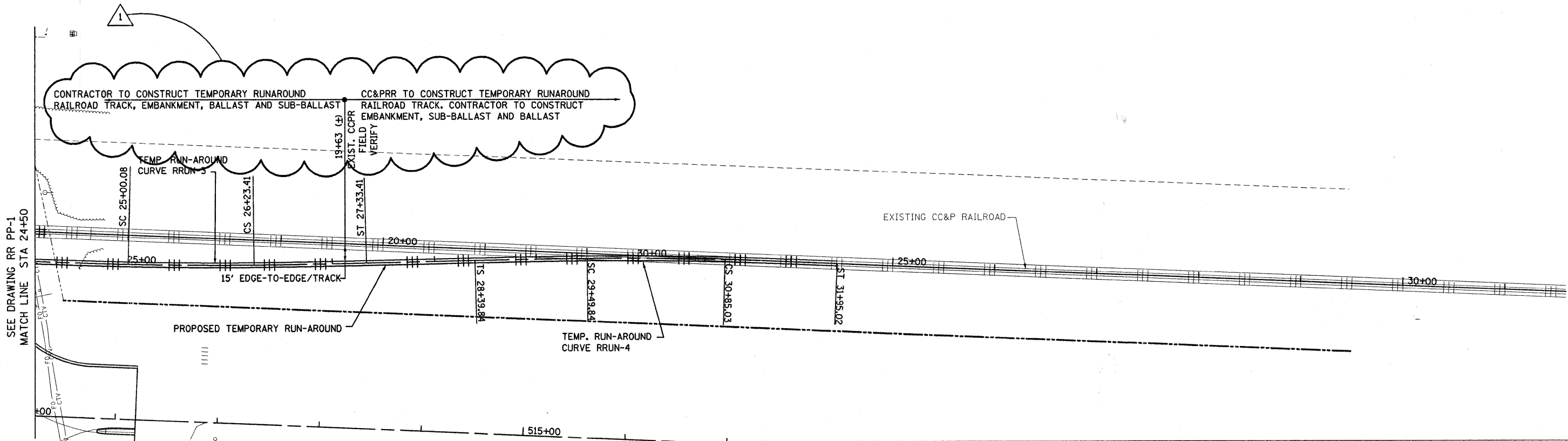


TEMPORARY RUN-AROUND CURVE RRUN-3			COORDINATES	
MAIN PI DATA	CURVE DATA	SPIRAL DATA	NORTH	EAST
PI 25+61.78	$\Delta$ 1° 50' 59.8" (LT)	L 110.00'	TS 1,934,984.8459	988,902.7077
N 1,934,978.3664	D 1° 30' 00.2"	R 3,819.61'	SC 1,934,981.2226	989,012.6469
E 989,074.2882	T 61.67'	$\emptyset$ 0° 16' 30.0"	CS 1,934,980.3344	989,135.9642
$\Delta$ 3° 30' 00" (LT)	L 123.33'	LT 73.33'	ST 1,934,982.3738	989,245.9443
Ts 171.7028'	R 3,819.61'	ST 36.67'		

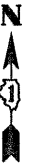
TEMPORARY RUN-AROUND CURVE RRUN-4			COORDINATES	
MAIN PI DATA	CURVE DATA	SPIRAL DATA	NORTH	EAST
PI 30+17.48	$\Delta$ 2° 01' 40.5" (RT)	L 109.99'	TS 1,934,984.8579	989,352.3496
N 1,934,989.0038	D 1° 30' 00.2"	R 3,819.61'	SC 1,934,986.8973	989,462.3297
E 989,529.9397	T 67.60'	$\emptyset$ 0° 16' 29.94"	CS 1,934,985.7137	989,597.5082
$\Delta$ 3° 40' 40" (RT)	L 135.19'	LT 73.33'	ST 1,934,981.7494	989,707.4258
Ts 177.63'	R 3,819.61'	ST 36.66'		

DATE	
BY	
DESIGNED	
PLANNED	
CHECKED	
DATE	
NO.	

DATE	
BY	
DESIGNED	
PLANNED	
CHECKED	
DATE	
NO.	

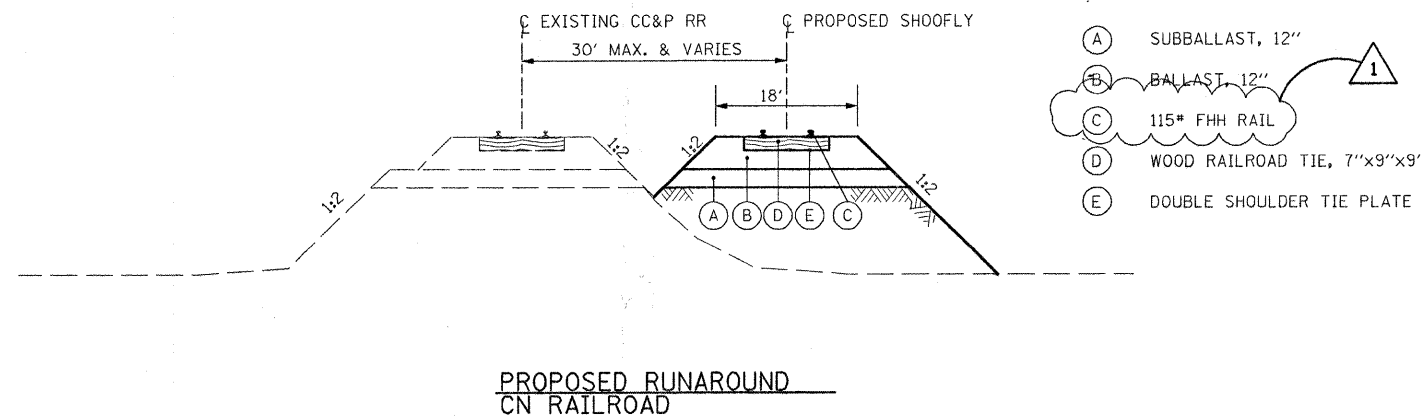


FILE NAME = I:\Dgn\Civil\Sheet\pp011.dgn	USER NAME = tthornton	DESIGNED -	REVISED - 6-1-09 $\Delta$	<b>KANE COUNTY</b> <b>DIVISION OF TRANSPORTATION</b>	<b>NEW STEARNS ROAD - STAGE 2</b> <b>CC&amp;P RR TEMPORARY RUNAROUND - PLAN AND PROFILE</b>	F.A.P. RTE. 361	SECTION 06-00214-10-BR	COUNTY KANE	TOTAL SHEETS 219	SHEET NO. 92
PLOT SCALE = 1:50,000	CHECKED -	REVISED -	REVISED -			CONTRACT NO. 63073				
PLOT DATE = 5/31/2009	DATE - 3/27/09	REVISED -	REVISED -			FED. ROAD DIST. NO. 1 ILLINOIS FED. AID PROJECT				
SCALE:		SHEET NO. OF SHEETS STA. TO STA.								



NOTES:

1. THE CHICAGO CENTRAL AND PACIFIC RAILROAD COMPANY WILL:
  - A. FURNISH ALL THE LABOR, MATERIALS AND WORK EQUIPMENT REQUIRED TO PERFORM AND COMPLETE ALL TEMPORARY AND PERMANENT ALTERATIONS OR RELOCATIONS OF COMMUNICATION AND SIGNAL WIRE LINES, SIGNALS AND RAILROAD APPURTENANCES ON ITS RIGHT OF WAY.
  - B. MAINTAIN TRACK STRUCTURE WHILE OPERATING ON RUNAROUND.
  - C. FURNISH FLAGMEN AND OTHER PERSONNEL AS REQUIRED TO PROTECT RAILROAD TRAFFIC IN CONNECTION WITH THE WORK TO BE PERFORMED BY THE CONTRACTOR. IT IS ESTIMATED THAT THAT ONE FLAGGER WILL BE REQUIRED FOR 200 DAYS.
  - D. PERFORM THE REASONABLE AND ESSENTIAL FIELD AND CONSTRUCTION ENGINEERING FOR CARRYING OUT ANY WORK TO BE PERFORMED BY CHICAGO CENTRAL AND PACIFIC RAILROAD COMPANY, INCLUDING THE CHECKING OF SHOP PLANS AS WILL BE PREPARED BY THE CONTRACTOR FOR THE FABRICATION OF THE STEEL SUPERSTRUCTURE.
  - E. INSPECT THE ERECTION AND CONSTRUCTION OF THE UNDERPASS STRUCTURE AS WELL AS THE TEMPORARY STRUCTURE AND TRACK.
  - F. CONSTRUCT ALL THE TRACKWORK AND TRACK SHIFTING FOR THE TEMPORARY RUNAROUND THAT IS LOCATED WITHIN 15 FEET OF THE MAINLINE TRACK. TEMPORARY RAILROAD EMBANKMENT, BALLAST AND SUB-BALLAST IN THESE AREAS WILL BE CONSTRUCTED BY THE CONTRACTOR.
2. THE CONTRACTOR MUST BE E-RAIL STATE CERTIFIED AND HAVE ALL EMPLOYEES ATTEND CN'S CONTRACTOR ORIENTATION CLASS. THE COST OF THIS CLASS WILL BE INCIDENTAL TO THE CONTRACT.
3. RAIL ANCHORS SHALL BE CONSTRUCTED IN ACCORDANCE WITH CN ENGINEERING TRACK STANDARDS. THE COST OF THE RAIL ANCHORS COST WILL BE INCIDENTAL TO THE ITEM RAILROAD TRACK.



FILE NAME =  
I:\Dgn\Civil\Sheet\ts004.dgn

USER NAME = tthornton

DESIGNED -

REVISED - 6-1-09

DRAWN -

REVISED -

PLOT SCALE = 1:10

CHECKED -

REVISED -

PLOT DATE = 6/1/2009

DATE - 3/27/09

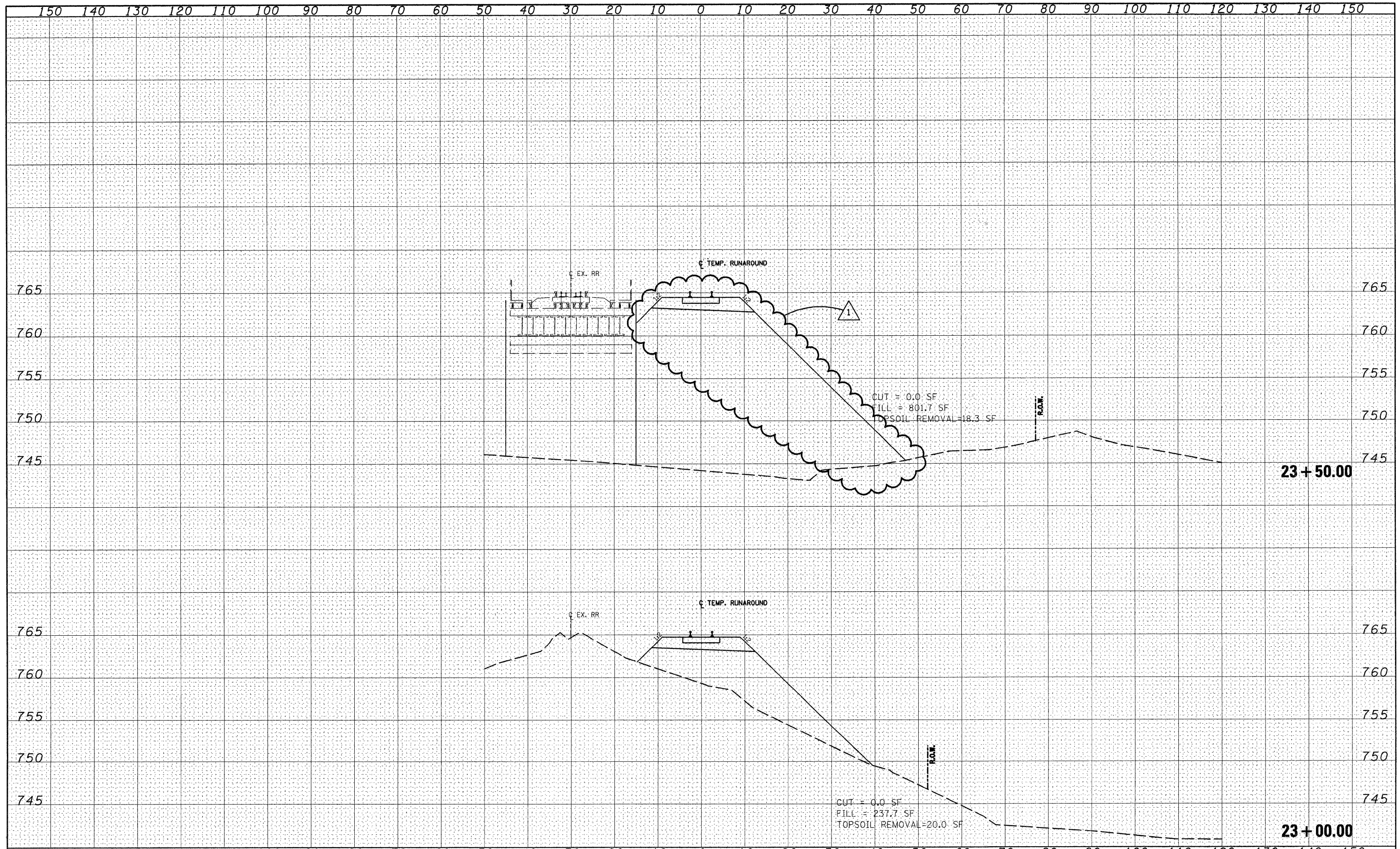
REVISED -

**KANE COUNTY  
DIVISION OF TRANSPORTATION**

**NEW STEARNS ROAD - STAGE 2  
CC&P RR TEMPORARY RUN-AROUND TYPICAL SECTION & NOTES**

SCALE: SHEET NO. OF SHEETS STA. TO STA.

F.A.P. RTE.	SECTION	COUNTY	TOTAL SHEETS	SHEET NO.
361	06-00214-10-BR	KANE	219	93
CONTRACT NO. 63073				
FED. ROAD DIST. NO. 1 ILLINOIS FED. AID PROJECT				



DATE	
BY	
SURVEYED	
PLOTTED	
TEMPLATE	
AREAS	
CHECKED	
NO.	

DATE	
BY	
SURVEYED	
PLOTTED	
TEMPLATE	
AREAS	
CHECKED	
NO.	

FILE NAME = I:\Dgn\Civil\Sheet\ks003.dgn	USER NAME = tthornton	DESIGNED - KBN	REVISED - 6-1-09	<b>KANE COUNTY DEPARTMENT OF TRANSPORTATION</b>	<b>CC&amp;P RR TEMPORARY RUN-AROUND CROSS SECTIONS</b>			F.A.P. RTE. 361	SECTION 06-00214-10-BR	COUNTY KANE	TOTAL SHEETS 219	SHEET NO. 110
PLOT SCALE = 1"=10'	CHECKED - TMT	REVISED -	REVISED -		SCALE: 1"=10'H; 1"=5'V SHEET NO. 17 OF 25 SHEETS STA. 23+00.00 TO STA. 23+50.00			CONTRACT NO. 63073				
PLOT DATE = 5/31/2009	DATE - 3/27/09	REVISED -	REVISED -		FED. ROAD DIST. NO. 1 ILLINOIS FED. AID PROJECT							