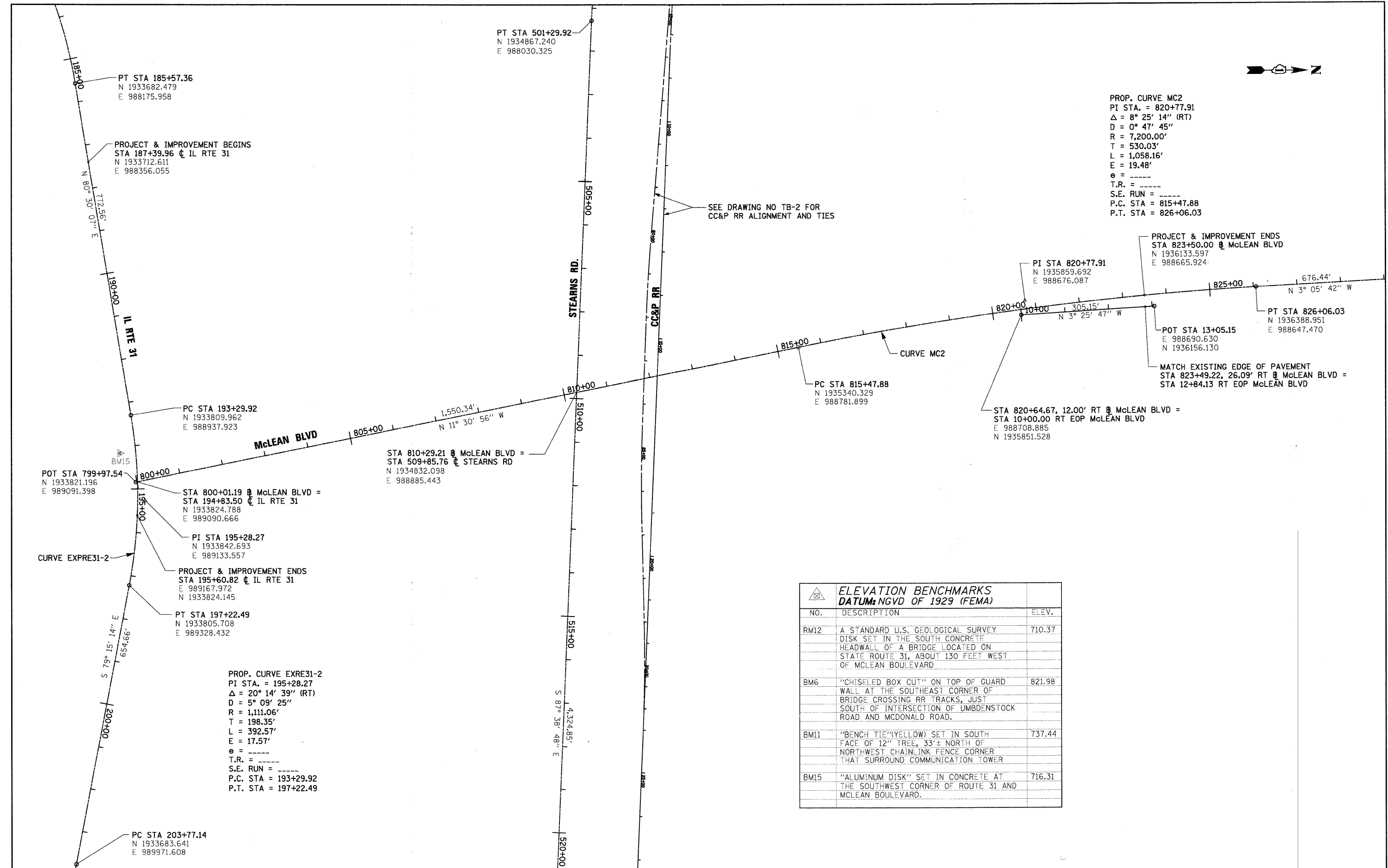


PROP. CURVE MC2  
 PI STA. = 820+77.91  
 $\Delta = 8^\circ 25' 14''$  (RT)  
 $D = 0^\circ 47' 45''$   
 $R = 7,200.00'$   
 $T = 530.03'$   
 $L = 1,058.16'$   
 $E = 19.48'$   
 $e = \text{-----}$   
 T.R. = -----  
 S.E. RUN = -----  
 P.C. STA = 815+47.88  
 P.T. STA = 826+06.03



PROJECT & IMPROVEMENT ENDS  
 STA 823+50.00 @ McLEAN BLVD  
 N 1936133.597  
 E 988665.924

POT STA 13+05.15  
 E 988690.630  
 N 1936156.130

MATCH EXISTING EDGE OF PAVEMENT  
 STA 823+49.22, 26.09' RT @ McLEAN BLVD =  
 STA 12+84.13 RT EOP McLEAN BLVD

PT STA 826+06.03  
 N 1936388.951  
 E 988647.470

PT STA 820+77.91  
 N 1935859.692  
 E 988676.087

POT STA 799+97.54  
 N 1933821.196  
 E 989091.398

PC STA 815+47.88  
 N 1935340.329  
 E 988781.899

STA 820+64.67, 12.00' RT @ McLEAN BLVD =  
 STA 10+00.00 RT EOP McLEAN BLVD  
 E 988708.885  
 N 1935851.528

PC STA 193+29.92  
 N 1933809.962  
 E 988937.923

PT STA 185+57.36  
 N 1933682.479  
 E 988175.958

PROJECT & IMPROVEMENT BEGINS  
 STA 187+39.96 @ IL RTE 31  
 N 1933712.611  
 E 988356.055

PC STA 203+77.14  
 N 1933683.641  
 E 989971.608

PT STA 197+22.49  
 N 1933805.708  
 E 989328.432

PROJECT & IMPROVEMENT ENDS  
 STA 195+60.82 @ IL RTE 31  
 E 989167.972  
 N 1933824.145

PI STA 195+28.27  
 N 1933842.693  
 E 989133.557

STA 800+01.19 @ McLEAN BLVD =  
 STA 194+83.50 @ IL RTE 31  
 N 1933824.788  
 E 989090.666

STA 810+29.21 @ McLEAN BLVD =  
 STA 509+85.76 @ STEARNS RD  
 N 1934832.098  
 E 988885.443

PT STA 501+29.92  
 N 1934867.240  
 E 988030.325

PROP. CURVE EXPRE31-2  
 PI STA. = 195+28.27  
 $\Delta = 20^\circ 14' 39''$  (RT)  
 $D = 5^\circ 09' 25''$   
 $R = 1,111.06'$   
 $T = 198.35'$   
 $L = 392.57'$   
 $E = 17.57'$   
 $e = \text{-----}$   
 T.R. = -----  
 S.E. RUN = -----  
 P.C. STA = 193+29.92  
 P.T. STA = 197+22.49

ELEVATION BENCHMARKS DATUM: NGVD OF 1929 (FEMA)		
NO.	DESCRIPTION	ELEV.
RM12	A STANDARD U.S. GEOLOGICAL SURVEY DISK SET IN THE SOUTH CONCRETE HEADWALL OF A BRIDGE LOCATED ON STATE ROUTE 31, ABOUT 130 FEET WEST OF MCLEAN BOULEVARD	710.37
BM6	"CHISELED BOX CUT" ON TOP OF GUARD WALL AT THE SOUTHEAST CORNER OF BRIDGE CROSSING RR TRACKS, JUST SOUTH OF INTERSECTION OF UMBDENSTOCK ROAD AND MCDONALD ROAD.	821.98
BM11	"BENCH TIE"(YELLOW) SET IN SOUTH FACE OF 12" TREE, 33'± NORTH OF NORTHWEST CHAINLINK FENCE CORNER THAT SURROUND COMMUNICATION TOWER	737.44
BM15	"ALUMINUM DISK" SET IN CONCRETE AT THE SOUTHWEST CORNER OF ROUTE 31 AND MCLEAN BOULEVARD.	716.31

FILE NAME = \\Dgn\Civil\Sheet\16001.dgn	USER NAME = tthornton	DESIGNED -	REVISED -	<b>KANE COUNTY DIVISION OF TRANSPORTATION</b>	<b>NEW STEARNS ROAD - STAGE 2 ALIGNMENT TIES AND BENCHMARKS</b>	F.A.P. RTE. 361	SECTION 06-00214-10-BR	COUNTY KANE	TOTAL SHEETS 219	SHEET NO. 16	
PLOT SCALE = 1:100	CHECKED -	REVISED -	REVISED -			SCALE: 1"=100'	SHEET NO. OF SHEETS	STA. TO STA.	FED. ROAD DIST. NO. 1	ILLINOIS FED. AID PROJECT	CONTRACT NO. 63073
PLOT DATE = 3/29/2009	DATE = 3/27/09	REVISED -	REVISED -								