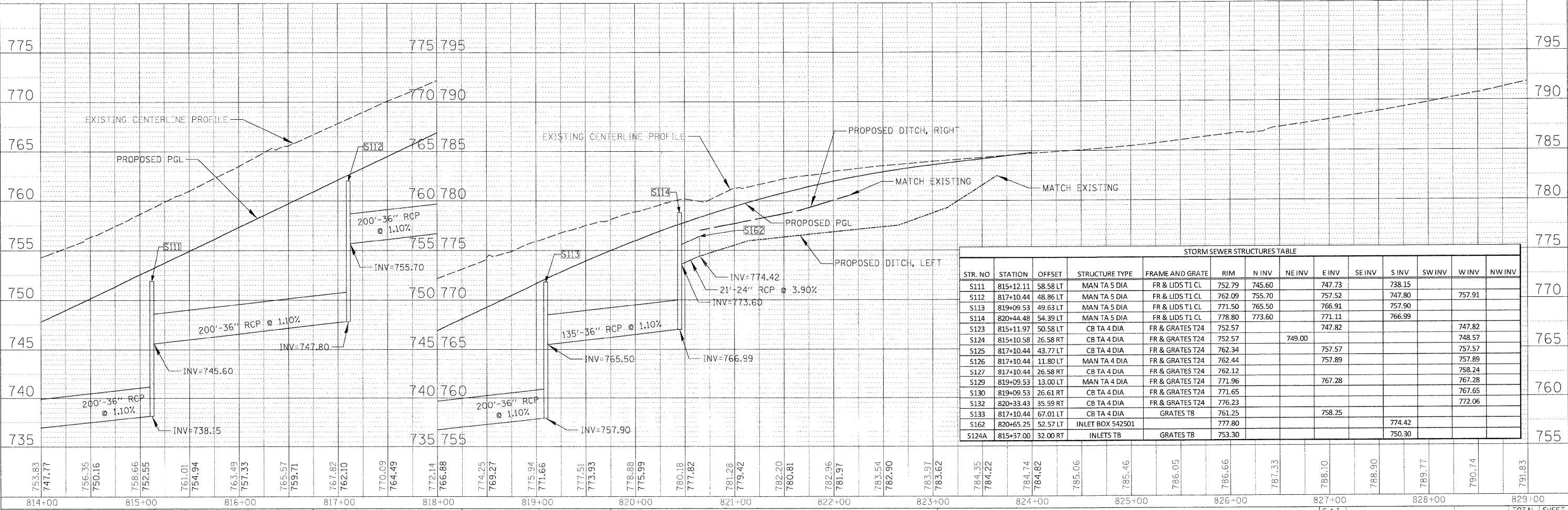
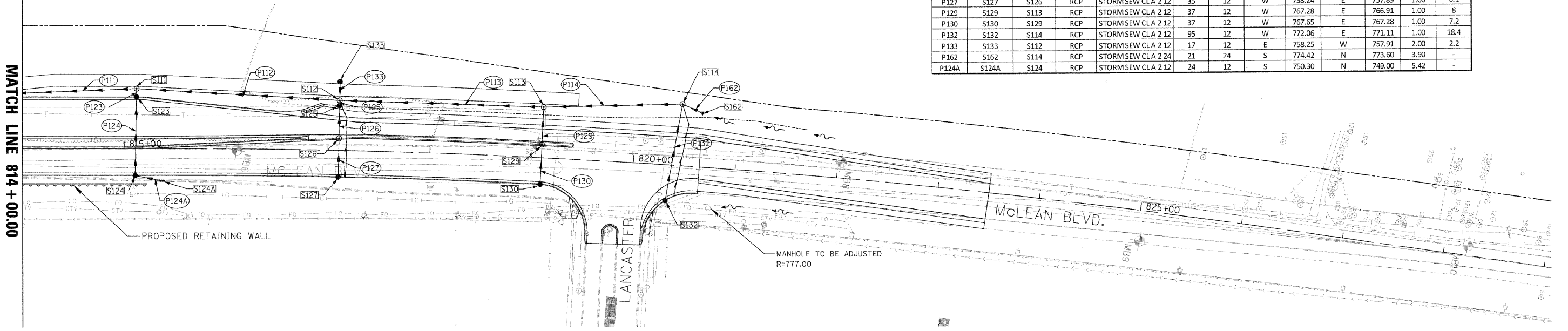


DATE: _____
 BY: _____
 SURVEYED: _____
 PLOTTED: _____
 CHECKED: _____
 NOTE BOOK NO.: _____
 CADD FILE NAME: _____

DATE: _____
 BY: _____
 SURVEYED: _____
 PLOTTED: _____
 CHECKED: _____
 NOTE BOOK NO.: _____
 STRUCTURE NOTATIONS CHKD: _____

PIPE NO.	FROM STRUCTURE	TO STRUCTURE	MATERIAL	TYPE	LENGTH (FT)	DIA (IN)	UPSTREAM		DOWNSTREAM		SLOPE	TBF (CY)
							INV	INVERT	INV	INVERT		
							DIRECTION		DIRECTION			
P112	S112	S111	RCP	STORMSEW CL A 3 36	200	36	S	747.80	N	745.60	1.10	331
P113	S113	S112	RCP	STORMSEW CL A 3 36	200	36	S	757.90	N	755.70	1.10	292
P114	S114	S113	RCP	STORMSEW CL A 3 36	135	36	S	766.99	N	765.50	1.10	163
P123	S123	S111	RCP	STORMSEW CL A 2 12	9	12	W	747.82	E	747.73	1.00	2.3
P124	S124	S123	RCP	STORMSEW CL A 2 12	75	12	W	748.57	E	747.82	1.00	19
P125	S125	S112	RCP	STORMSEW CL A 2 12	5	12	W	757.57	E	757.52	1.00	3.2
P126	S126	S125	RCP	STORMSEW CL A 2 12	32	12	W	757.89	E	757.57	1.00	5.4
P127	S127	S126	RCP	STORMSEW CL A 2 12	35	12	W	758.24	E	757.89	1.00	6.1
P129	S129	S113	RCP	STORMSEW CL A 2 12	37	12	W	767.28	E	766.91	1.00	8
P130	S130	S129	RCP	STORMSEW CL A 2 12	37	12	W	767.65	E	767.28	1.00	7.2
P132	S132	S114	RCP	STORMSEW CL A 2 12	95	12	W	772.06	E	771.11	1.00	18.4
P133	S133	S112	RCP	STORMSEW CL A 2 12	17	12	E	758.25	W	757.91	2.00	2.2
P162	S162	S114	RCP	STORMSEW CL A 2 24	21	24	S	774.42	N	773.60	3.90	-
P124A	S124A	S124	RCP	STORMSEW CL A 2 12	24	12	S	750.30	N	749.00	5.42	-



STR. NO	STATION	OFFSET	STRUCTURE TYPE	FRAME AND GRATE	RIM	N INV	NE INV	E INV	SE INV	S INV	SW INV	W INV	NW INV
S111	815+12.11	58.58 LT	MAN TA 5 DIA	FR & LIDS T1 CL	752.79	745.60		747.73		738.15			
S112	817+10.44	48.86 LT	MAN TA 5 DIA	FR & LIDS T1 CL	762.09	755.70		757.52		747.80		757.91	
S113	819+09.53	49.63 LT	MAN TA 5 DIA	FR & LIDS T1 CL	771.50	765.50		766.91		757.90			
S114	820+44.48	54.39 LT	MAN TA 5 DIA	FR & LIDS T1 CL	778.80	773.60		771.11		766.99			
S123	815+11.97	50.58 LT	CB TA 4 DIA	FR & GRATES T24	752.57			747.82				747.82	
S124	815+10.58	26.58 RT	CB TA 4 DIA	FR & GRATES T24	752.57		749.00					748.57	
S125	817+10.44	43.77 LT	CB TA 4 DIA	FR & GRATES T24	762.34			757.57				757.57	
S126	817+10.44	11.80 LT	MAN TA 4 DIA	FR & GRATES T24	762.44			757.89				757.89	
S127	817+10.44	26.58 RT	CB TA 4 DIA	FR & GRATES T24	762.12			758.24				758.24	
S129	819+09.53	13.00 LT	MAN TA 4 DIA	FR & GRATES T24	771.96			767.28				767.28	
S130	819+09.53	26.61 RT	CB TA 4 DIA	FR & GRATES T24	771.65			767.65				767.65	
S132	820+33.43	35.59 RT	CB TA 4 DIA	FR & GRATES T24	776.23			772.06				772.06	
S133	817+10.44	67.01 LT	CB TA 4 DIA	GRATES T8	761.25			758.25					
S162	820+65.25	52.57 LT	INLET BOX 542501		777.80			774.42					
S124A	815+37.00	32.00 RT	INLETS TB	GRATES T8	753.30			750.30					