

ROUTE MARKERS

FOR U.S. ROUTES
MI-40-2424

FOR ILLINOIS ROUTES
MI-50-2424

R.R. UNMARKED ROUTES
SPECIAL 24" x 18" VARIABLE
4" BLACK LETTERS ON WHITE
REFLECTIVE BACKGROUND

ARROWS SIGNS

M5-1L-2115

M5-1R-2115

M6-1L-2115

M6-1R-2115

M6-3-2115

CARDINAL DIRECTION & DETOUR SIGNS

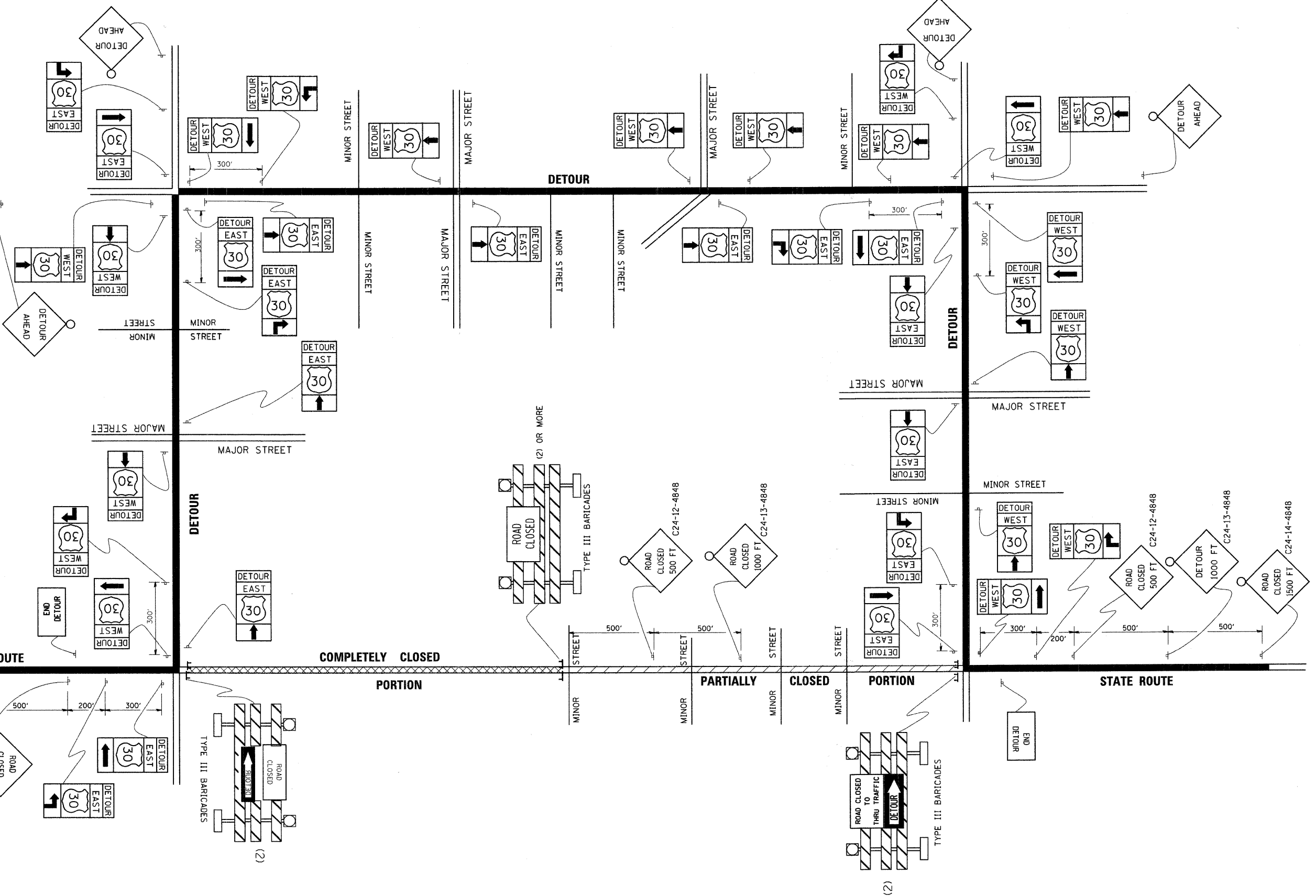
NORTH M3-1-219

EAST M3-2-219

SOUTH M3-3-219

WEST M3-4-219

DETOUR MI-7-219



FILE NAME = I:\Dgn\Civil\Sheet\sd208.dgn	USER NAME = tsherton	DESIGNED -	REVISED -	KANE COUNTY DIVISION OF TRANSPORTATION	NEW STEARNS ROAD - STAGE 2 TYPICAL MARKING FOR CLOSING STATE HIGHWAYS	F.A.P. RTE. 361	SECTION 06-00214-10-BR	COUNTY KANE	TOTAL SHEETS 219	SHEET NO. 89	
PLOT SCALE = 1:10	CHECKED -	REVISED -	SCALE:			SHEET NO. OF SHEETS	STA. TO STA.	TC-21		CONTRACT NO. 63073	
PLOT DATE = 3/29/2009	DATE = 3/27/09	REVISED -	REVISED -			FED. ROAD DIST. NO. 1 ILLINOIS FED. AID PROJECT					