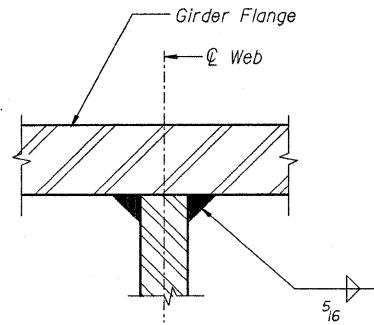
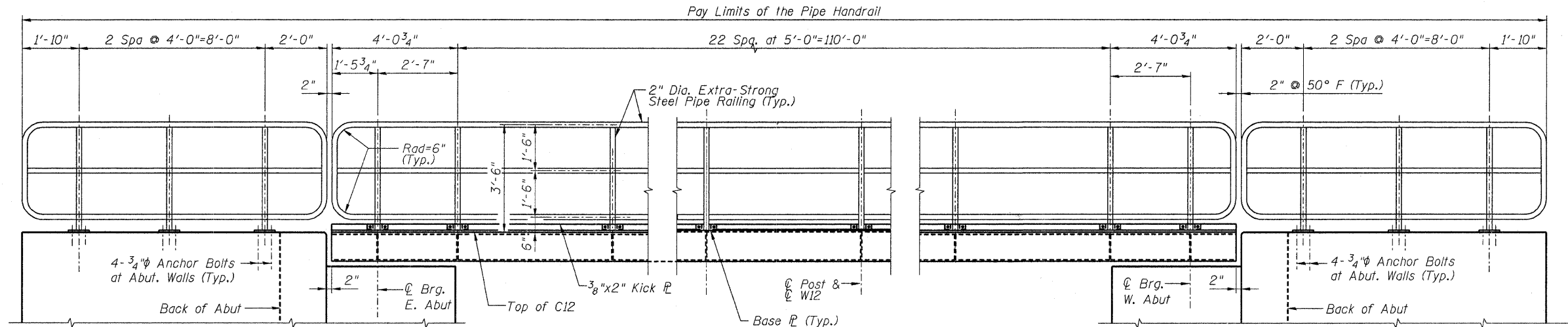


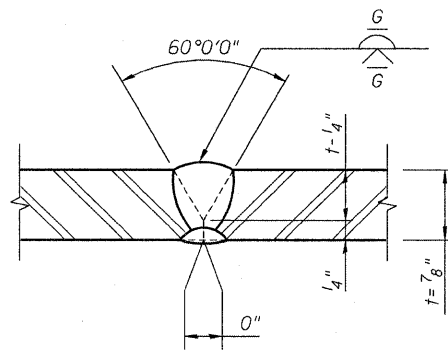
STATE OF ILLINOIS
DEPARTMENT OF TRANSPORTATION



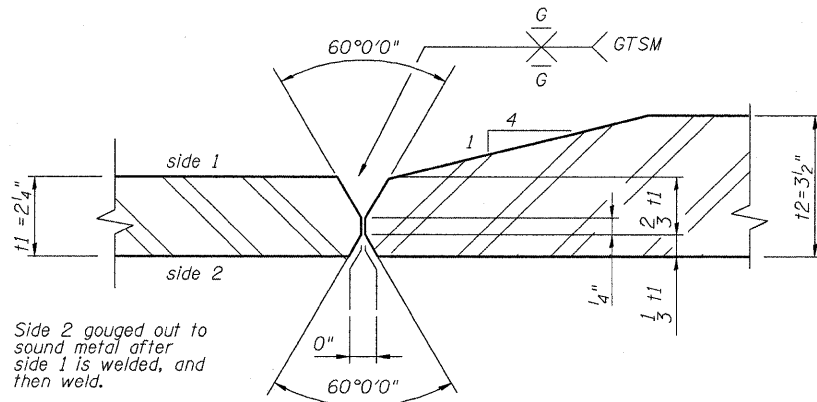
FLANGE TO WEB WELD
Scale: N.T.S.



VIEW S-S RAILING ELEVATION
(Looking South)

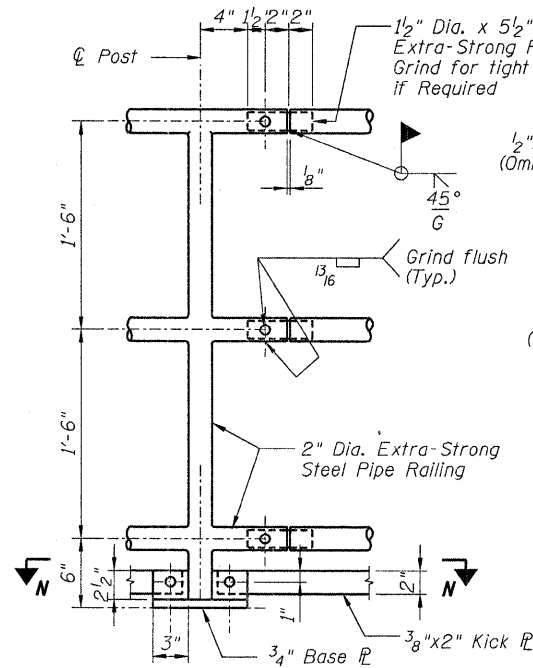


WEB PLATE SPLICE DETAIL
B-L2C-S
AWS Prequalified weld
Scale: N.T.S.

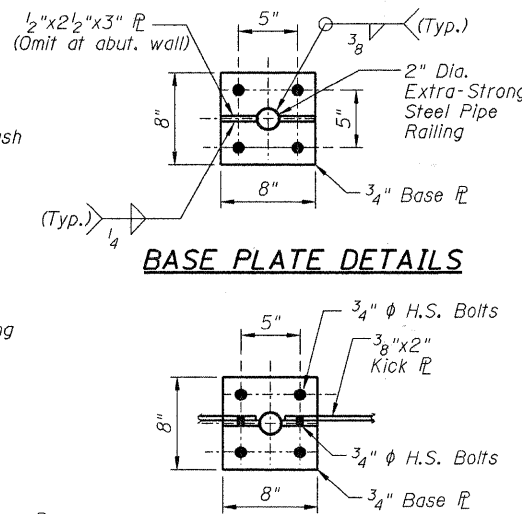


FLANGE PLATE SPLICE DETAIL
B-U3C-S
AWS Prequalified weld
Scale: N.T.S.

Notes:
All welding shall be performed in flat position.
All welding shall be per AWS "Bridge Welding Code" and shall also comply with Railroad (CN).

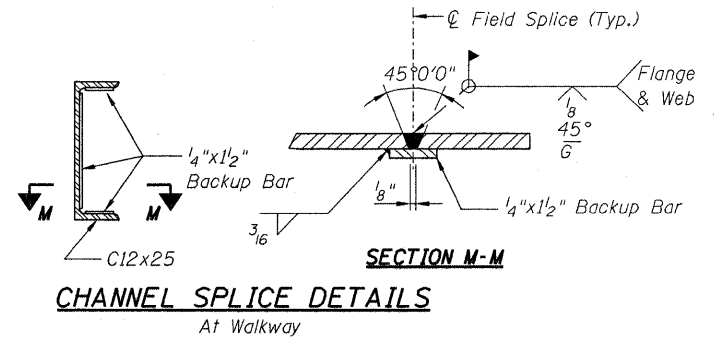


RAILING SPLICE AND POST DETAILS



BASE PLATE DETAILS

SECTION N-N



CHANNEL SPLICE DETAILS

DESIGNED	KJH
CHECKED	MGB
DRAWN	RJ
CHECKED	BKB

McDonough Associates Inc.
Engineers / Architects
130 East Randolph Street
Chicago, Illinois 60601
(312) 946-8600

FREEPORT SUBDIVISION	
BRIDGE NO. W40.07	
SHEET NO. S11	RTE.
S21 SHEETS	361

STEEL DETAILS - 4
STRUCTURE NO. 045-3163

SECTION	COUNTY	TOTAL SHEETS	SHEET NO.
06-00214-02-BR	KANE	219	138
SN 045-3163		CONTRACT NO. 63073	
FED. ROAD DIST. NO. 1 ILLINOIS FED. AID PROJECT			