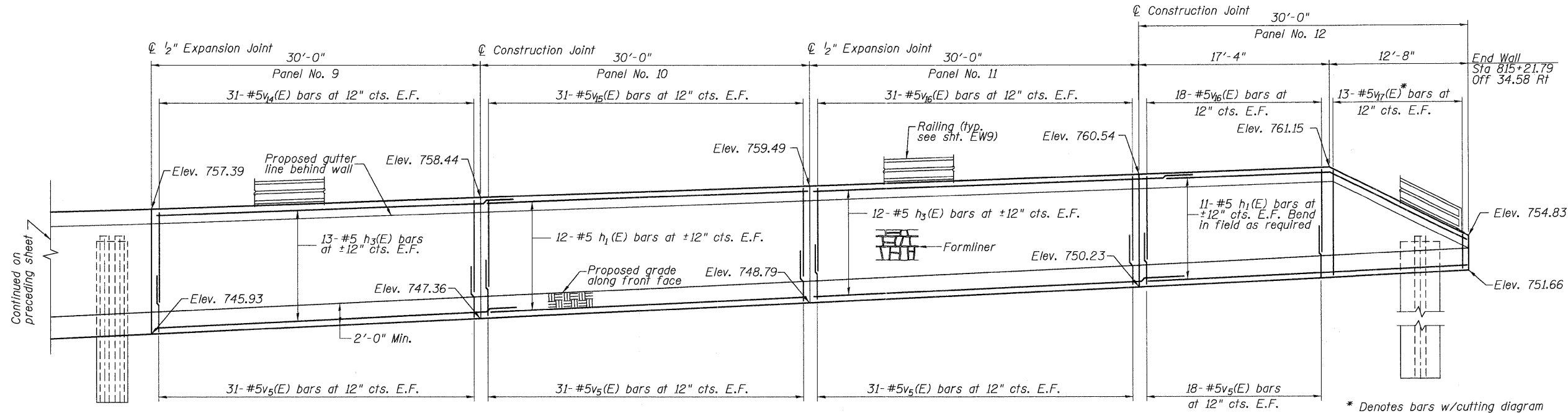


STATE OF ILLINOIS
DEPARTMENT OF TRANSPORTATION



ELEVATION

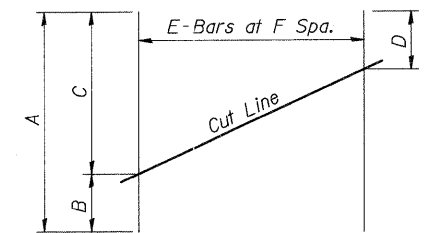
BAR LIST

Bar	No.	Size	Length	Shape
h ₁ (E)	136	#5	29'-8"	
h ₂ (E)	50	#5	36'-8"	
h ₃ (E)	198	#5	32'-4"	
h ₇ (E)	68	#5	33'-9"	
v ₅ (E)	408	#5	5'-0"	
* v ₆ (E)	50	#5	26'-5"	
v ₇ (E)	20	#5	23'-5"	
v ₈ (E)	62	#5	16'-4"	
v ₉ (E)	62	#5	12'-11"	
v ₁₀ (E)	62	#5	8'-3"	
v ₁₁ (E)	62	#5	10'-5"	
v ₁₂ (E)	62	#5	9'-10"	
v ₁₃ (E)	62	#5	9'-3"	
v ₁₄ (E)	62	#5	8'-8"	
v ₁₅ (E)	62	#5	8'-3"	
* v ₁₆ (E)	98	#5	7'-10"	
v ₁₇ (E)	13	#5	12'-7"	
v ₁₈ (E)	62	#5	19'-0"	
v ₁₉ (E)	124	#5	7'-0"	
Reinforcement Bars, Epoxy Coated			Pound	4,052

* Indicates cutting diagram

Reinforcement bars designated (E) shall be epoxy coated.

Min bar lap = 2'-2"



FIELD CUTTING DIAGRAM

Order bars full length and cut as shown

Bar	A	B	C	D	E	F
v ₆ (E)	26'-5"	3'-0"	23'-5"	3'-0"	50	1'-0"
v ₇ (E)	12'-7"	2'-10"	9'-9"	2'-10"	13	1'-0"

DESIGNED	JCE/KJH	200
CHECKED	PMH	EXAMINED
DRAWN	JCE/PMH	ENGINEER OF BRIDGE DESIGN
CHECKED	KJH	PASSED
		ENGINEER OF BRIDGES AND STRUCTURES

McDonough Associates Inc.
Engineers / Architects
130 East Randolph Street
Chicago, Illinois 60601
(312) 946-8600

SHEET NO. EW7	RTE.	SECTION	COUNTY	TOTAL SHEETS	SHEET NO.
	361	06-00214-02-BR	KANE	219	164
EW13 SHEETS	CONTRACT NO. 63073				
FED. ROAD DIST. NO. 1 ILLINOIS FED. AID PROJECT					

**CONCRETE FACING DETAILS
STRUCTURE NO. 045-2039**