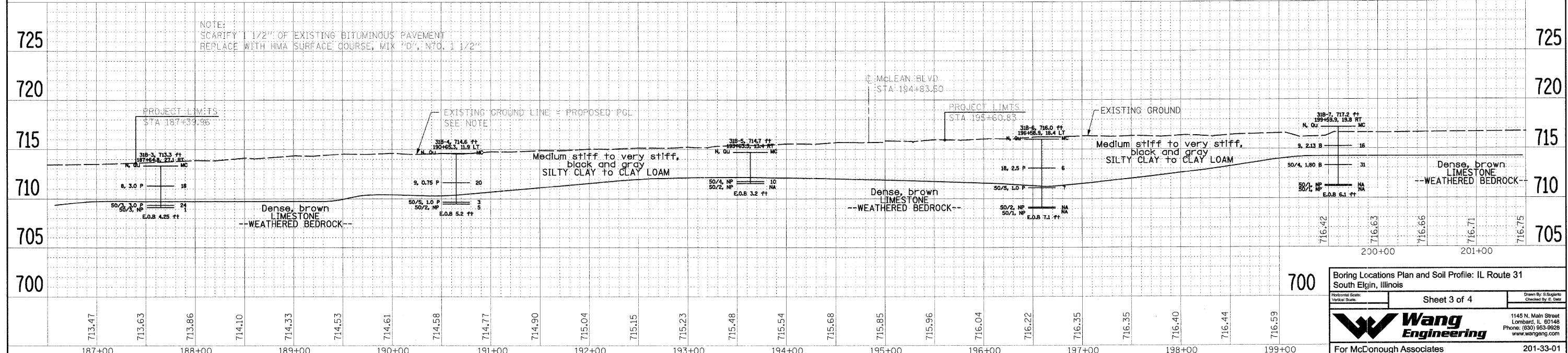
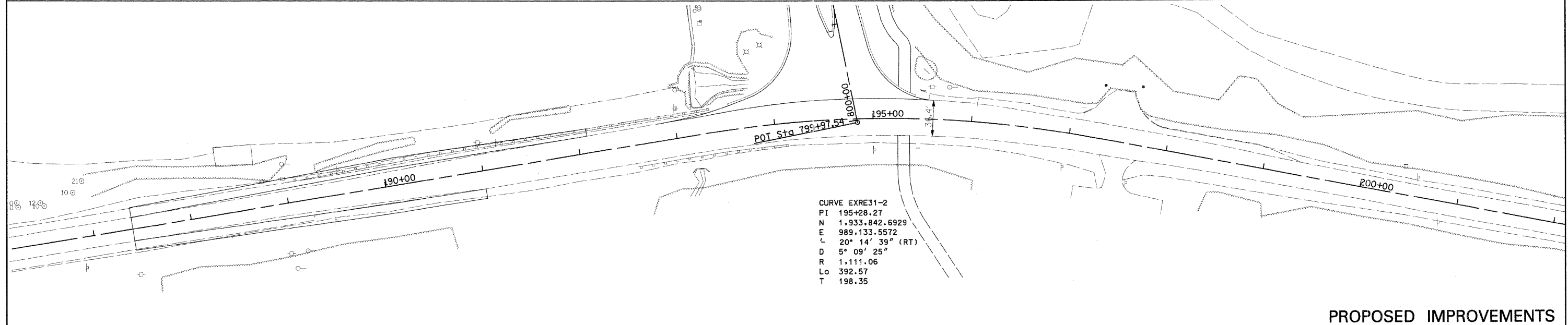
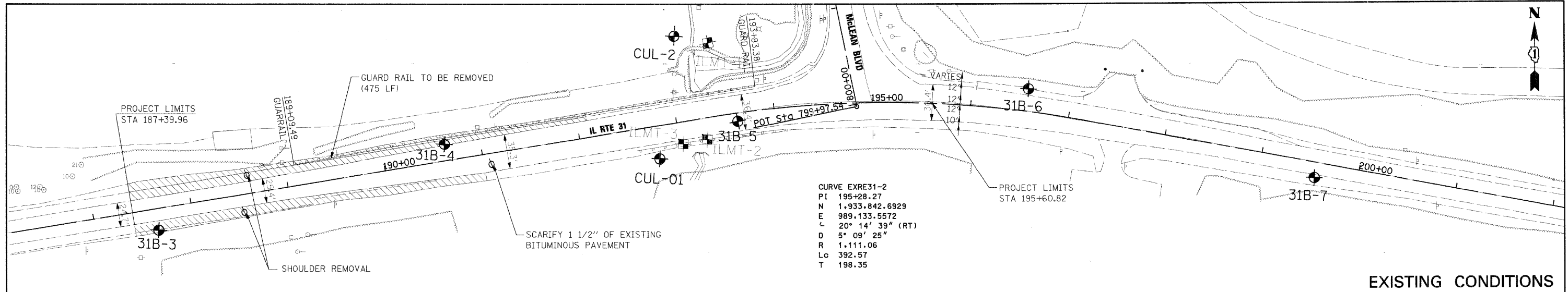


PLAN	SURVEYED	DATE
	PLOTTED	BY
	CHECKED	
	REVISIONS	
	NO. OF WAY CHECKED	
	CADD FILE NAME	
	NO.	

PROFILE	SURVEYED	DATE
	PLOTTED	BY
	CHECKED	
	REVISIONS	
	NOTATIONS CHECKED	
	NO.	



FILE NAME = I:\Dgn\Civil\Sheet\Boring Sheets\sb201.dgn	USER NAME = thorton	DESIGNED =	REVISIONS =	KANE COUNTY DIVISION OF TRANSPORTATION	NEW STEARNS ROAD - STAGE 2 ILLINOIS ROUTE 31 - PLAN AND PROFILE	F.A.I. RTE. = 361	SECTION = 06-00214-10-BR	COUNTY = KANE	TOTAL SHEETS = 219	SHEET NO. = 171
PLOT SCALE = 1:1,000	CHECKED =	REVISIONS =	CONTRACT NO. 63073							
PLOT DATE = 3/29/2009	DATE = 3/27/09	REVISIONS =	FED. ROAD DIST. NO. 1 (ILLINOIS) FED. AID PROJECT							
			SCALE: H=1"=50', V=1"=5'							

Boring Locations Plan and Soil Profile: IL Route 31 South Elgin, Illinois

Sheet 3 of 4

Drawn By: S. Supto
Checked By: E. Dier

Wang Engineering

1145 N. Main Street
Lombard, IL 60148
Phone: (630) 853-9929
www.wangeng.com

For McDonough Associates 201-33-01