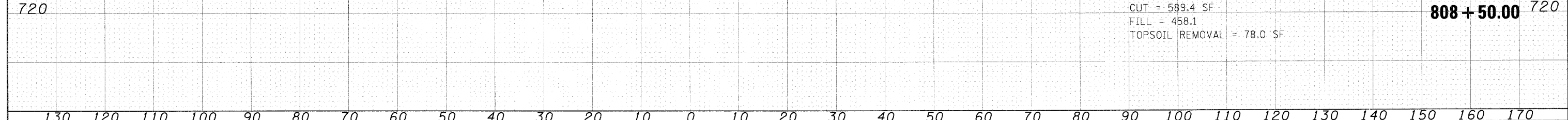
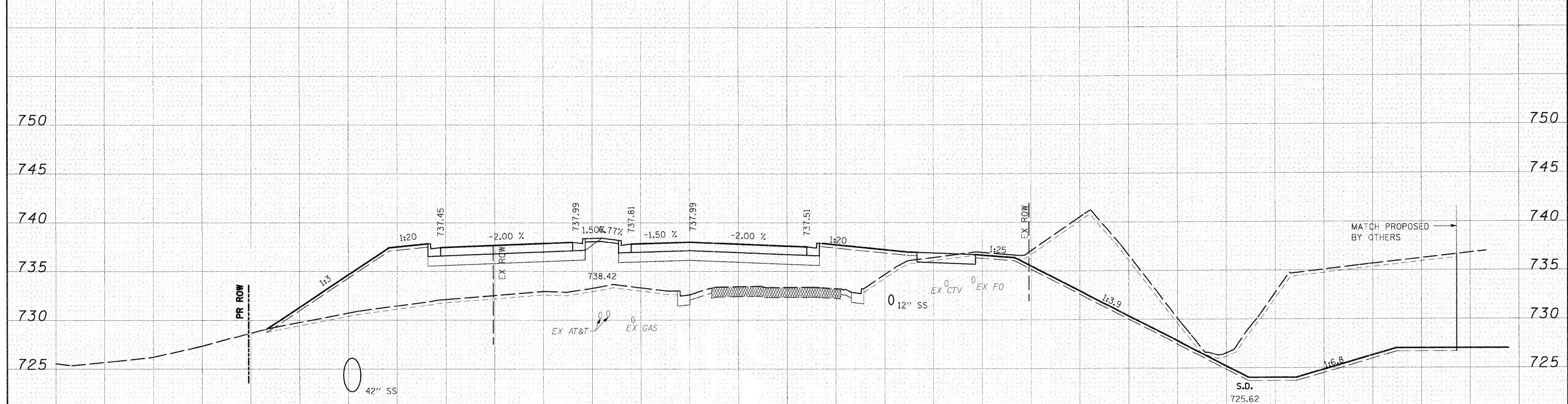
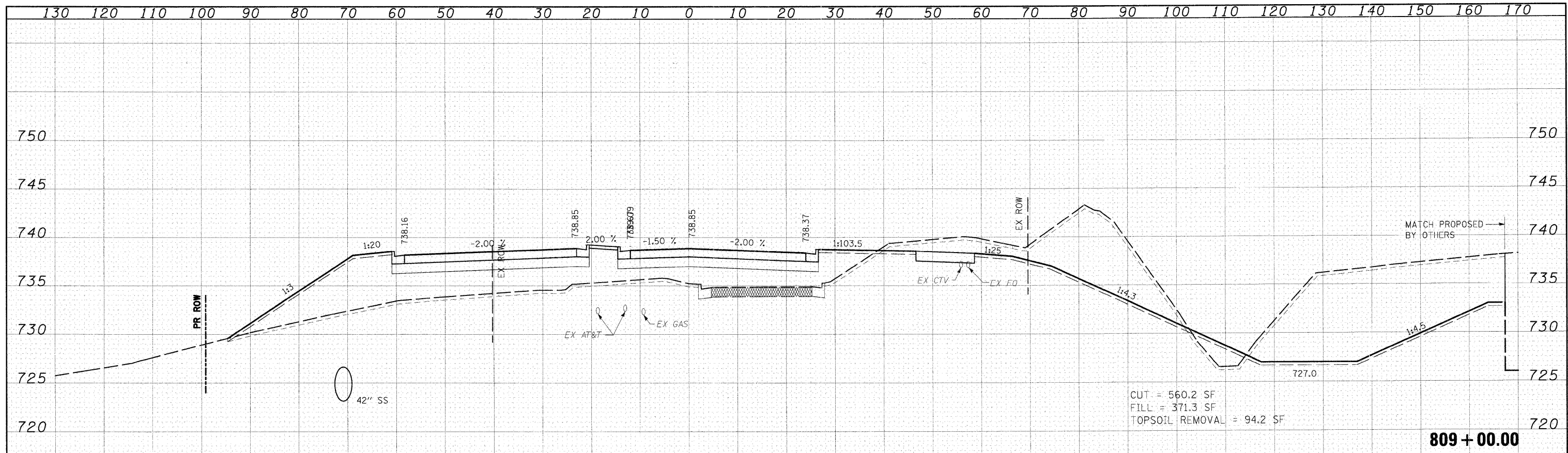


| | |
|--------------|---------------|
| BY | DATE |
| FINAL SURVEY | SURVEYED |
| NOTE BOOK | PLOTTED |
| NO. | TEMPLATE |
| | AREAS CHECKED |

| | |
|-----------------|---------------|
| BY | DATE |
| ORIGINAL SURVEY | SURVEYED |
| NOTE BOOK | PLOTTED |
| NO. | TEMPLATE |
| | AREAS CHECKED |



| | |
|------------------------------|-----------------------|
| FILE NAME = | USER NAME = Jf:guerra |
| I:\Dgn\Civil\Sheet\rs021.dgn | DESIGNED - JWM |
| | DRAWN - JWM |
| | CHECKED - MJT |
| | DATE - 3/27/09 |

| | |
|---------|----------|
| REVISOR | REVISION |
| | |
| | |
| | |

**KANE COUNTY
DEPARTMENT OF TRANSPORTATION**

MCLEAN CROSS SECTIONS

SCALE: 1"=10'H 1"=5'V SHEET NO. OF 17 SHEETS STA. 808+50.00 TO STA. 809+00.00

| | | | | |
|---|------------------------|-------------|--------------------|---------------|
| F.A.P. RTE. 361 | SECTION 06-00214-10-BR | COUNTY KANE | TOTAL SHEETS 219 | SHEET NO. 206 |
| FED. ROAD DIST. NO. 1 ILLINOIS FED. AID PROJECT | | | CONTRACT NO. 63073 | |