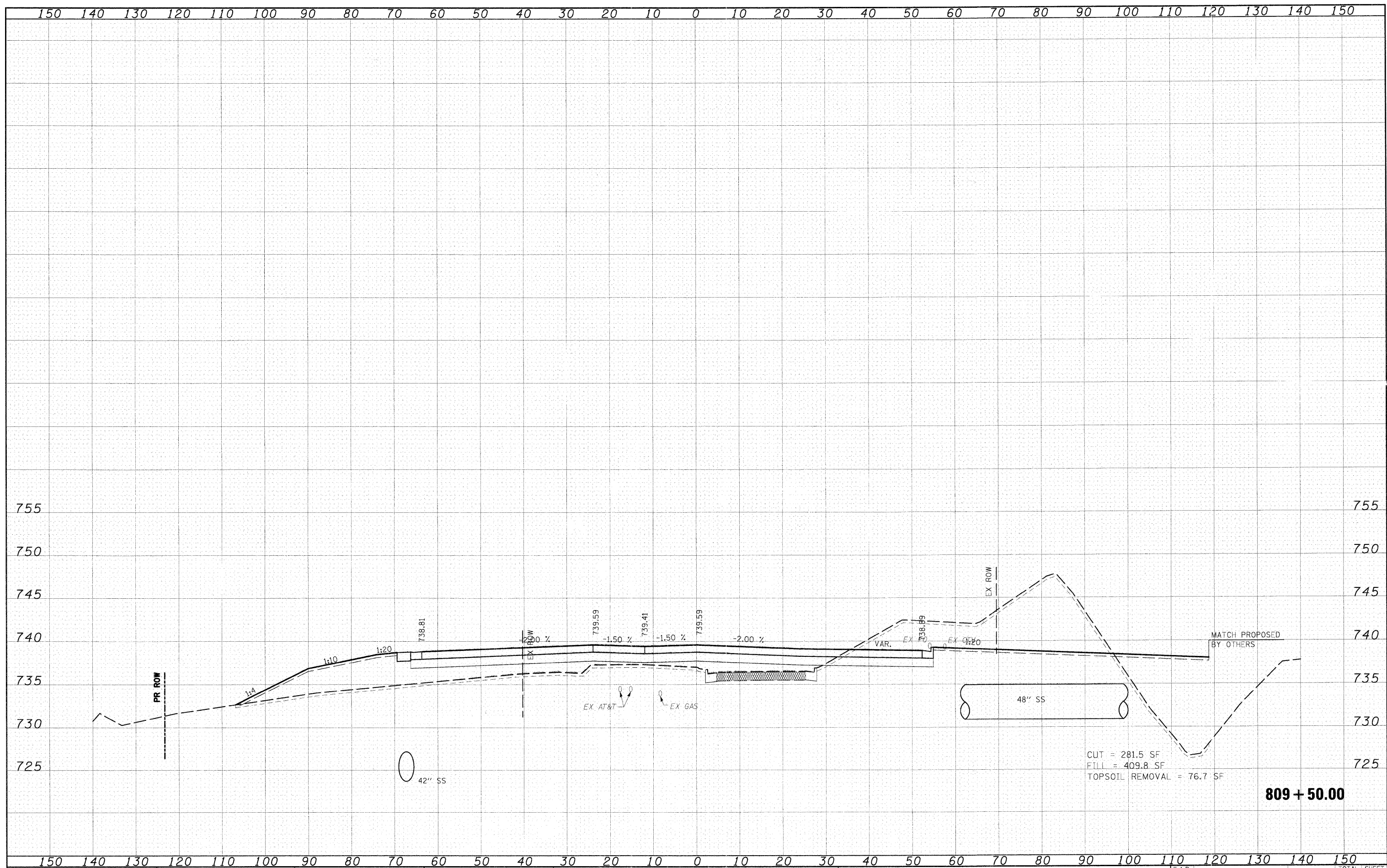


DATE	
BY	
SURVEYED	
PLOTTED	
TEMPLATE	
NOTE BOOK	
AREAS CHECKED	
NO.	

DATE	
BY	
SURVEYED	
PLOTTED	
TEMPLATE	
NOTE BOOK	
AREAS CHECKED	
NO.	



CUT = 281.5 SF
 FILL = 409.8 SF
 TOPSOIL REMOVAL = 76.7 SF

809 + 50.00

FILE NAME = I:\Dgn\Civil\Sheet\ksa001.dgn	USER NAME = JFiguera	DESIGNED - JWM	REVISED -	KANE COUNTY DEPARTMENT OF TRANSPORTATION	MCLEAN CROSS SECTIONS	F.A.P. RTE. 361	SECTION 06-00214-10-BR	COUNTY KANE	TOTAL SHEETS 219	SHEET NO. 207	
PLOT SCALE = 1:10	DATE = 3/27/09	DRAWN - JWM	REVISED -			SCALE: 1"=10'H 1"=5'V SHEET NO. OF 17 SHEETS	STA. 809+50.00 TO STA. 810+00.00	CONTRACT NO. 63073		FED. ROAD DIST. NO. 1 ILLINOIS FED. AID PROJECT	
PLOT DATE = 3/30/2009	DATE = 3/27/09	CHECKED - MJT	REVISED -								
		DATE = 3/27/09	REVISED -								