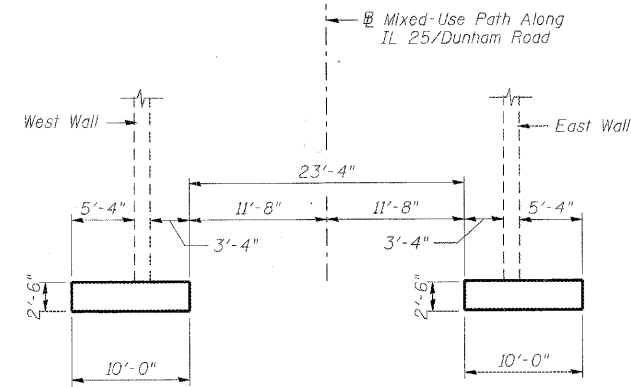
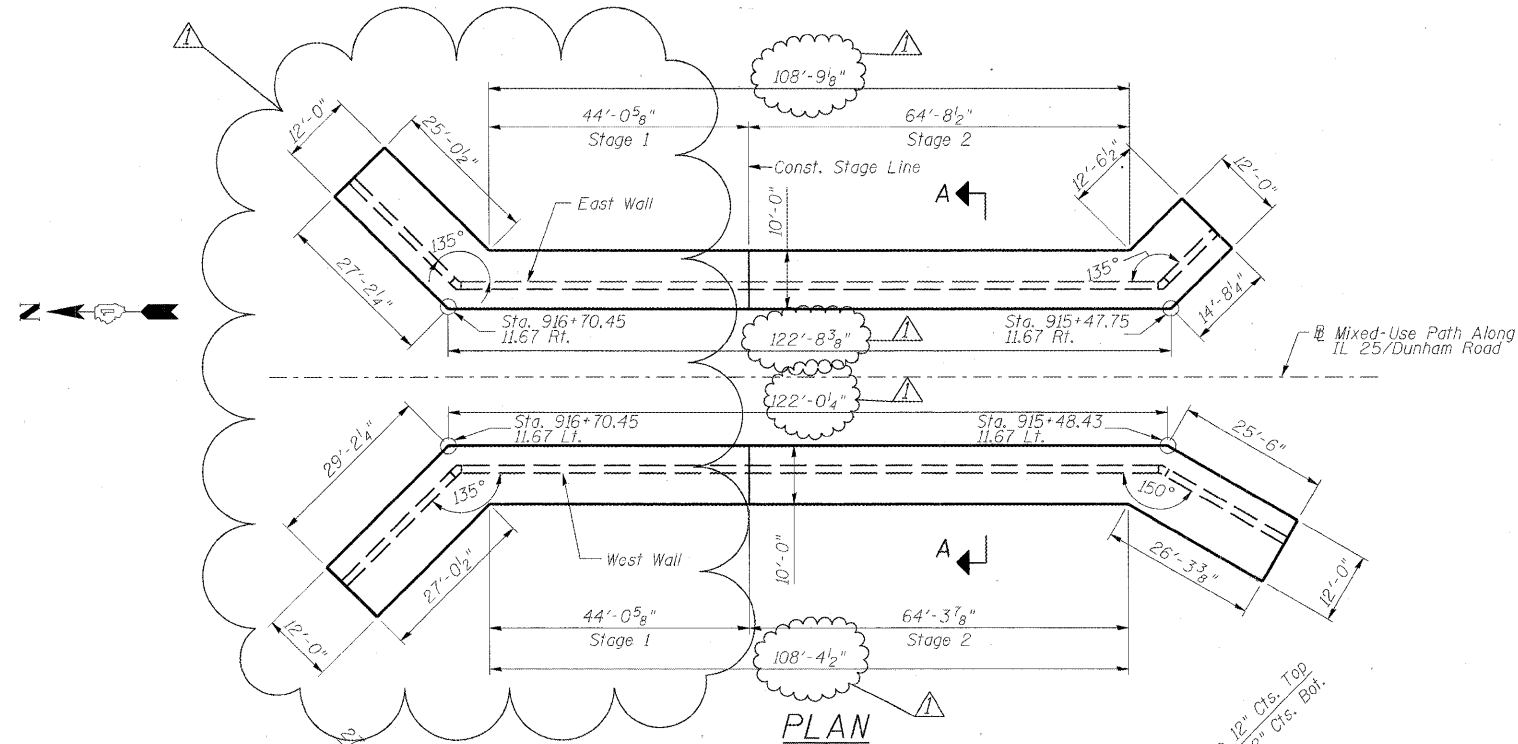


STATE OF ILLINOIS
DEPARTMENT OF TRANSPORTATION

ROUTE NO.	SECTION	COUNTY	TOTAL SHEETS	SHEET NO.	SHEET SA- 3
-	-	KANE	545	290	OF 14 SHEETS
FED. ROAD DIST. NO. 7	ILLINOIS	FED. AID PROJECT			

Contract #63074



SECTION A-A

BILL OF MATERIAL

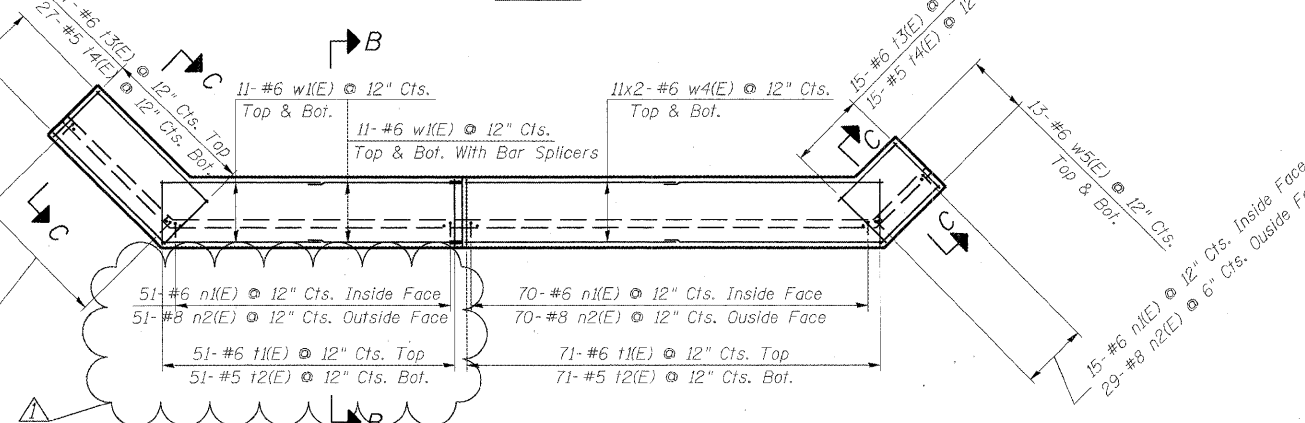
(Stage 1 Construction)

Bar	No.	Size	Length	Shape
n1(E)	157	#6	4'-10"	—
n2(E)	210	#8	9'-7"	—
t1(E)	102	#6	9'-8"	—
t2(E)	102	#5	9'-8"	—
t3(E)	55	#6	11'-8"	—
t4(E)	55	#5	11'-8"	—
w1(E)	88	#6	26'-9"	—
w2(E)	26	#6	28'-11"	—
w3(E)	26	#6	28'-11"	—
Concrete Structures	Cu. Yd.		148.3	
Reinforcement Bars, Epoxy Coated	Pound		16,370	
Bar Splicers	Each		44	

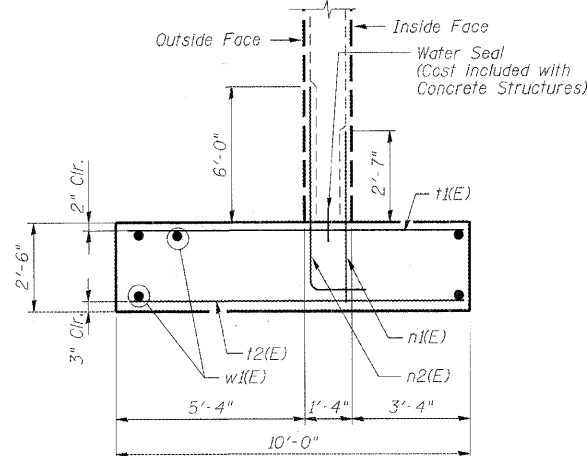
BILL OF MATERIAL

(Stage 2 Construction)

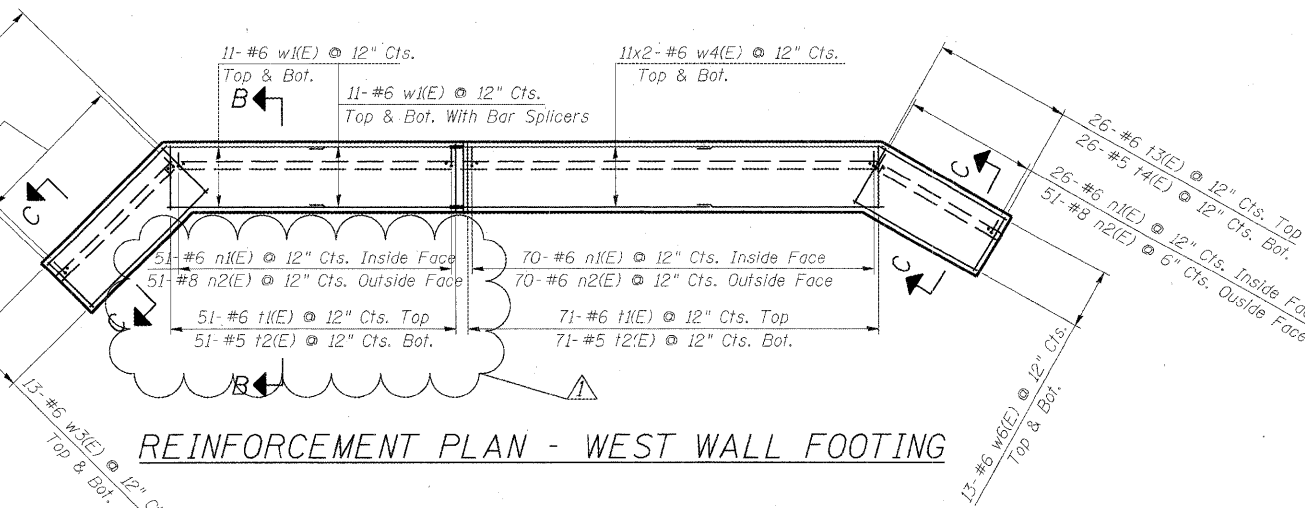
Bar	No.	Size	Length	Shape
n1(E)	181	#6	4'-10"	—
n2(E)	220	#8	9'-7"	—
t1(E)	142	#6	9'-8"	—
t2(E)	142	#5	9'-8"	—
t3(E)	41	#6	11'-8"	—
t4(E)	41	#5	11'-8"	—
w4(E)	88	#6	37'-3"	—
w5(E)	26	#6	14'-4"	—
w6(E)	26	#6	25'-2"	—
Concrete Structures	Cu. Yd.		169.7	
Reinforcement Bars, Epoxy Coated	Pound		18,130	



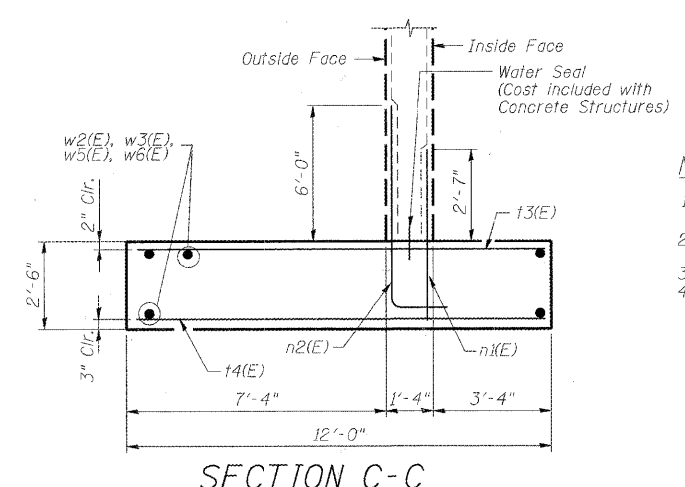
REINFORCEMENT PLAN - EAST WALL FOOTING



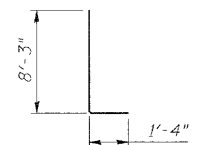
SECTION B-B



REINFORCEMENT PLAN - WEST WALL FOOTING



SECTION C-C



BAR n2(E)

NOTES:

1. Stations and offsets are measured with respect to Mixed-Use Path along IL 25/ Dunham Road
2. Bars indicated thus 13x8-#6 etc. indicates 13 lines of bars with 8 lengths per line.
3. Maximum Applied Bearing Pressure is 3000 psf.
4. 1" Conduit through footing at north end of Stage 1. See Lighting Plans.

FOUNDATION PLAN AND REINFORCEMENT

**MULTI-USE PATH UNDER
IL 25/STEARNS ROAD
F.A.P. 360 - SEC. 06-00214-15-BR
KANE COUNTY
STATION 916+09.93
STRUCTURE NO. 045-3173**

DESIGNED	AAY
CHECKED	AJK
DRAWN	VH
CHECKED	HMA/DMC

▲ Addendum #1 - 6/5/09

benesch
alfred benesch & company
Engineers • Surveyors • Planners
205 North Michigan Avenue, Suite 2400
Chicago, Illinois 60601
312-565-0450
Job # 3944