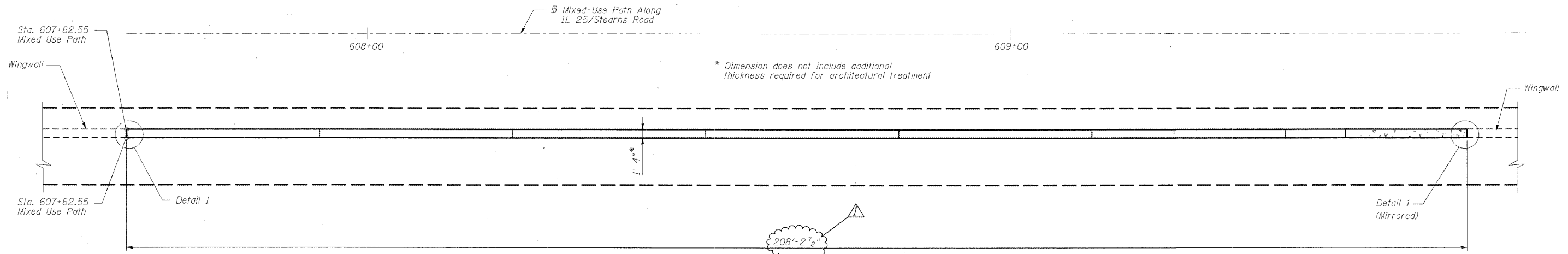


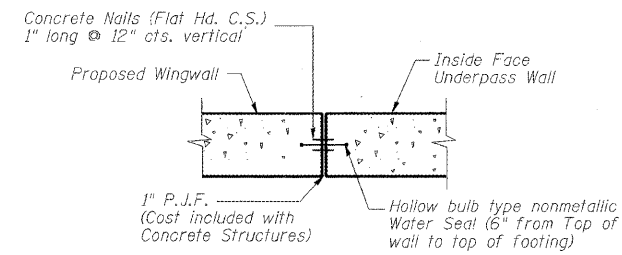
STATE OF ILLINOIS  
DEPARTMENT OF TRANSPORTATION

ROUTE NO.	SECTION	COUNTY	SHEET NO.	SHEET	SHEET SB- 6 OF 14 SHEETS
-	-	KANE	545	307	
FED. ROAD DIST. NO. 7		ILLINOIS	FED. AID PROJECT-		

Contract # 63074



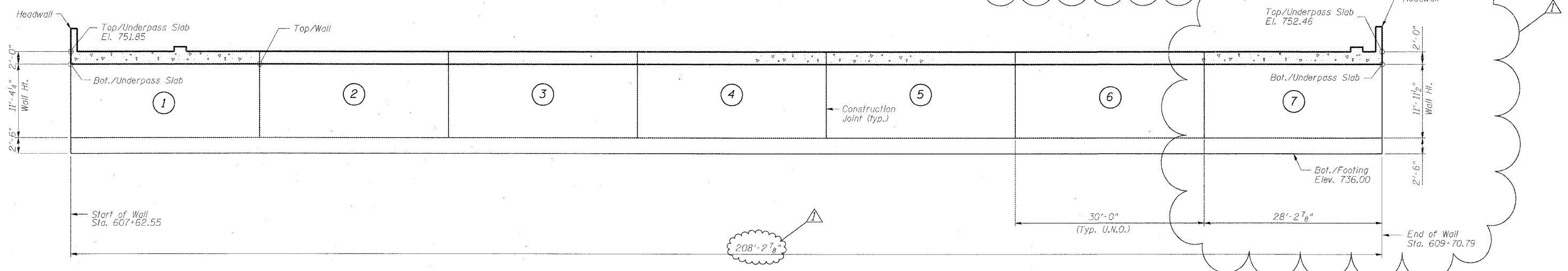
PLAN



DETAIL 1

**TOP/WALL ELEVATIONS**

Location Between	Station	Elevation
Start of Wall	607+62.55	749.85
Panels 1 & 2	607+92.55	749.94
Panels 2 & 3	608+22.55	750.03
Panels 3 & 4	608+52.55	750.12
Panels 4 & 5	608+82.55	750.21
Panels 5 & 6	609+12.55	750.30
Panels 6 & 7	609+42.55	750.39
End of Wall	609+70.79	750.46



ELEVATION

- NOTES:**
- Stations and offsets are measured with respect to  $\text{M}$  Mixed-Use Path along IL 25/Stearns Road
  - For wall reinforcement see sheet SB-7.
  - For Construction Joint detail see sheet SB-5.
  - U.N.O. denotes unless noted otherwise.

**PLAN & ELEVATION SOUTH WALL  
MIXED-USE PATH UNDER  
IL 25/DUNHAM ROAD  
F.A.P. 360 - SEC. 06-00214-15-BR  
KANE COUNTY  
STATION 609+05.92  
STRUCTURE NO. 045-3174**

DESIGNED	AAY
CHECKED	AJK
DRAWN	VH
CHECKED	HMA/DMC

▲ Addendum #1 - 6/5/09

**benesch**  
alfred benesch & company  
Engineers • Surveyors • Planners  
205 North Michigan Avenue, Suite 2400  
Chicago, Illinois 60601  
312-585-0450  
Job # 3944