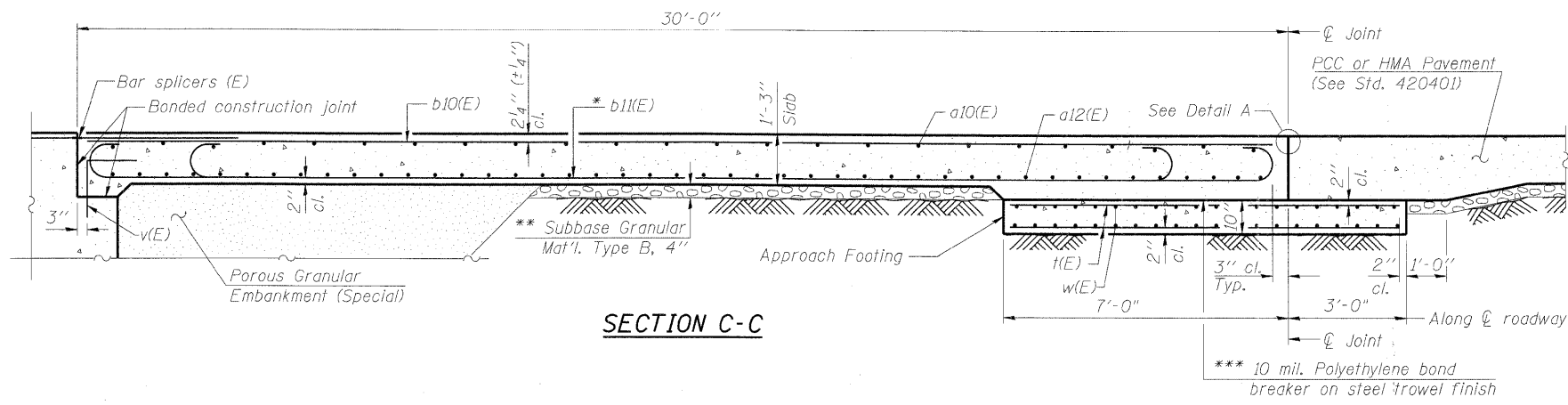


STATE OF ILLINOIS
DEPARTMENT OF TRANSPORTATION

ROUTE NO.	SECTION	COUNTY	TOTAL SHEETS	SHEET
-	-	KANE	545	345
FED. ROAD DIST. NO. 7	ILLINOIS	FED. AID PROJECT		

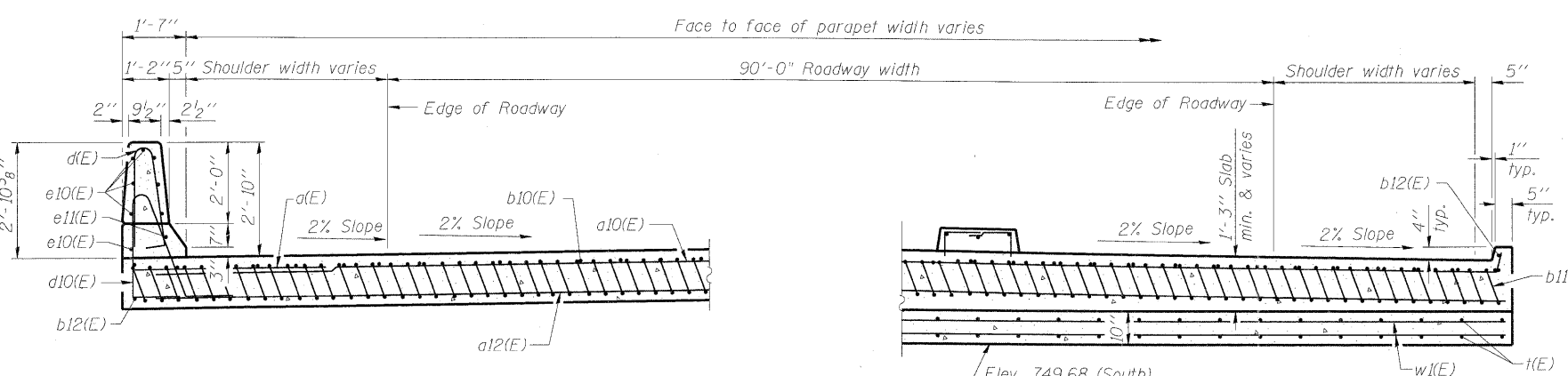
SHEET SD- 30
OF 34 SHEETS

Contract # 63074



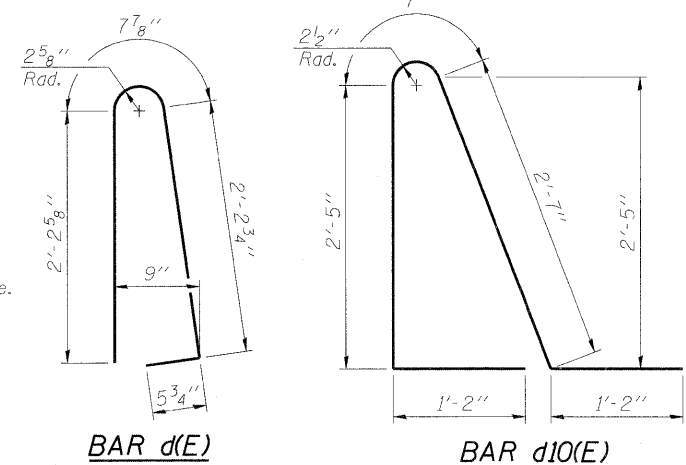
SECTION C-C

- Notes:
1. See sheet SD-29 for Detail A and View B-B.
 2. Approach slab and parapet concrete shall be paid for as Concrete Superstructure.
 3. Approach footing concrete shall be paid for as Concrete Structures.
 4. Reinforcement shall be paid for as Reinforcement Bars, Epoxy Coated.
 5. For v(E) bar details, see sheets SD-13 and SD-15.
 6. The approach footing maximum applied service bearing pressure (Q_{max}) = 2.0 ksf.
 7. For bar splicer details, see sheet SD-26.
 8. For Porous Granular Embankment (Special) and drainage treatment details, see sheet SD-2.



SECTION D-D

(See Plan for dimensions not shown)



* Tilt #9 b11(E) bars as required to maintain clearance.
*** Cost included with Concrete Superstructure.

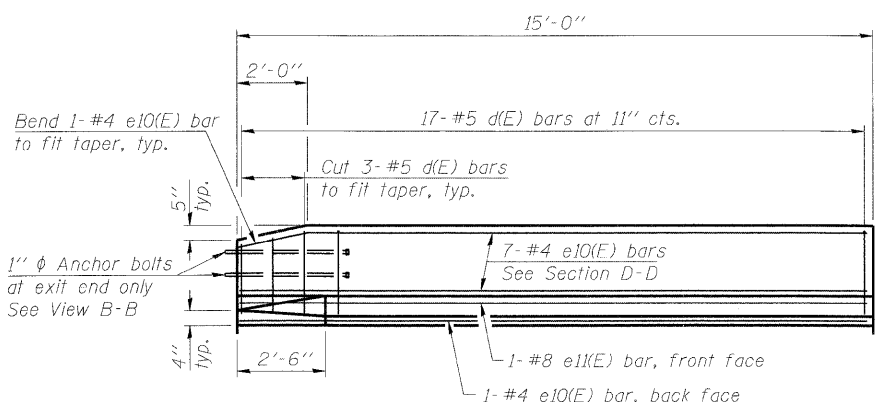
TWO APPROACHES - STAGE 1
BILL OF MATERIAL

Bar	No.	Size	Length	Shape
a(E)	24	#6	6'-6"	—
a10(E)	50	#4	32'-0"	—
a11(E)	50	#4	10'-0"	—
a12(E)	92	#5	32'-6"	—
a13(E)	92	#5	10'-0"	—
b10(E)	64	#4	29'-8"	—
b11(E)	188	#9	29'-9"	—
b12(E)	4	#4	14'-8"	—
c1(E)	120	#5	1'-9"	—
d(E)	34	#5	5'-7"	—
d10(E)	34	#5	7'-11"	—
e10(E)	16	#4	14'-8"	—
e11(E)	2	#8	14'-8"	—
i(E)	148	#4	9'-8"	—
w(E)	80	#5	31'-6"	—
w1(E)	80	#5	10'-0"	—
Concrete Superstructure	Cu. Yd.		137.6	
Concrete Structures	Cu. Yd.		22.7	
Bar Splicers	Each		222	
Reinforcement Bars, Epoxy Coated	Pound		31,180	

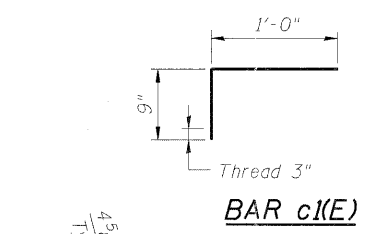
TWO APPROACHES - STAGE 2
BILL OF MATERIAL

Bar	No.	Size	Length	Shape
a(E)	24	#6	6'-6"	—
a10(E)#	100	#4	32'-0"	—
a12(E)	184	#5	32'-6"	—
b10(E)	102	#4	29'-8"	—
b11(E)	284	#9	29'-9"	—
b12(E)	4	#4	14'-8"	—
c1(E)	120	#5	1'-9"	—
d(E)	34	#5	5'-7"	—
d10(E)	34	#5	7'-11"	—
e10(E)	16	#4	14'-8"	—
e11(E)	2	#8	14'-8"	—
i(E)	236	#4	9'-8"	—
w(E)	160	#5	31'-6"	—
Concrete Superstructure	Cu. Yd.		192.1	
Concrete Structures	Cu. Yd.		36.6	
Reinforcement Bars, Epoxy Coated	Pound		35,640	

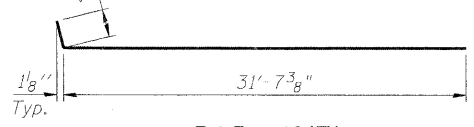
25 bars in stage 2 construction do not require the bend.



VIEW E-E

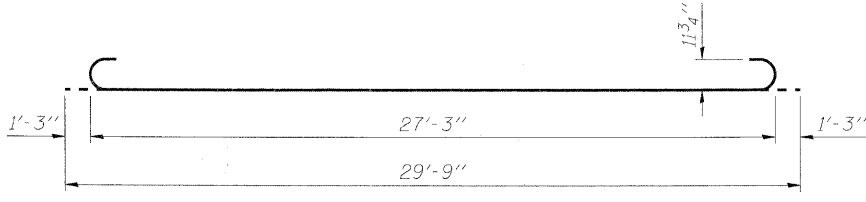


BAR c1(E)



BAR a10(E)

(25 bars for stage 2 construction do not require the bend)



BAR b11(E)

DESIGNED	AJK
CHECKED	AAY
DRAWN	AJK
CHECKED	DMC

benesch
alfred benesch & company
Engineers • Surveyors • Planners
205 North Michigan Avenue, Suite 2400
Chicago, Illinois 60601
312-565-0450
Job # 3944

BRIDGE APPROACH SLAB DETAILS (2 OF 2)
IL 25/DUNHAM ROAD OVER THE
EAST BRANCH OF BREWSTER CREEK
F.A.P. 360 - SEC. 06-00214-15-BR
KANE COUNTY
STATION 276+36.96
STRUCTURE NO. 045-2032

x:\39000s\3944\engineering_documents\1125-dunham_over_brewster-sno045-2032(nbl)\sno045-2032(nbl)\find\0452032-63074-030-appr2.dgn 11:22:13 AM 3/30/2009