

F.A.U. RTE.	SECTION	COUNTY	TOTAL SHEETS	SHEET NO.
82	08-00070-00-RS	MCHENRY	11	1
FED. ROAD DIST. NO.		ILLINOIS	CONTRACT NO.	

INDEX OF SHEETS

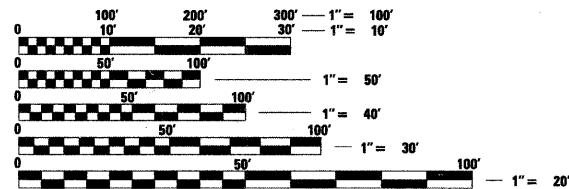
- 1 COVER SHEET
- 2 GENERAL NOTES, HIGHWAY STANDARDS AND SUMMARY OF QUANTITIES
- 3 TYPICAL SECTIONS
- 4 ROADWAY PLAN
- 5 PAVEMENT MARKING AND LANDSCAPE PLAN
- 6-11 DETAILS

STATE OF ILLINOIS
DEPARTMENT OF TRANSPORTATION
DIVISION OF HIGHWAYS
PLANS FOR PROPOSED
FEDERAL HIGHWAY
FAU ROUTE 82 (LILLIAN STREET)
ILLINOIS ROUTE 31 TO CRYSTAL LAKE ROAD,
RESURFACING
SECTION 08-00070-00-RS
PROJECT M-9003(242)
MCHENRY COUNTY
C-91-329-09

TRAFFIC DATA

ADT:
LILLIAN ST. 7,021 VPD (2004) 13,150 VPD (2020)

POSTED SPEED	DESIGN SPEED
25 MPH (EXISTING)	30 MPH (EXISTING)
25 MPH (PROPOSED)	30 MPH (PROPOSED)



FULL SIZE PLANS HAVE BEEN PREPARED USING STANDARD ENGINEERING SCALES. REDUCED SIZED PLANS WILL NOT CONFORM TO STANDARD SCALES. IN MAKING MEASUREMENTS ON REDUCED PLANS, THE ABOVE SCALES MAY BE USED.

J.U.L.I.E.
JOINT UTILITY LOCATION INFORMATION FOR EXCAVATION
CALL 811

Know what's below.
Call before you dig.

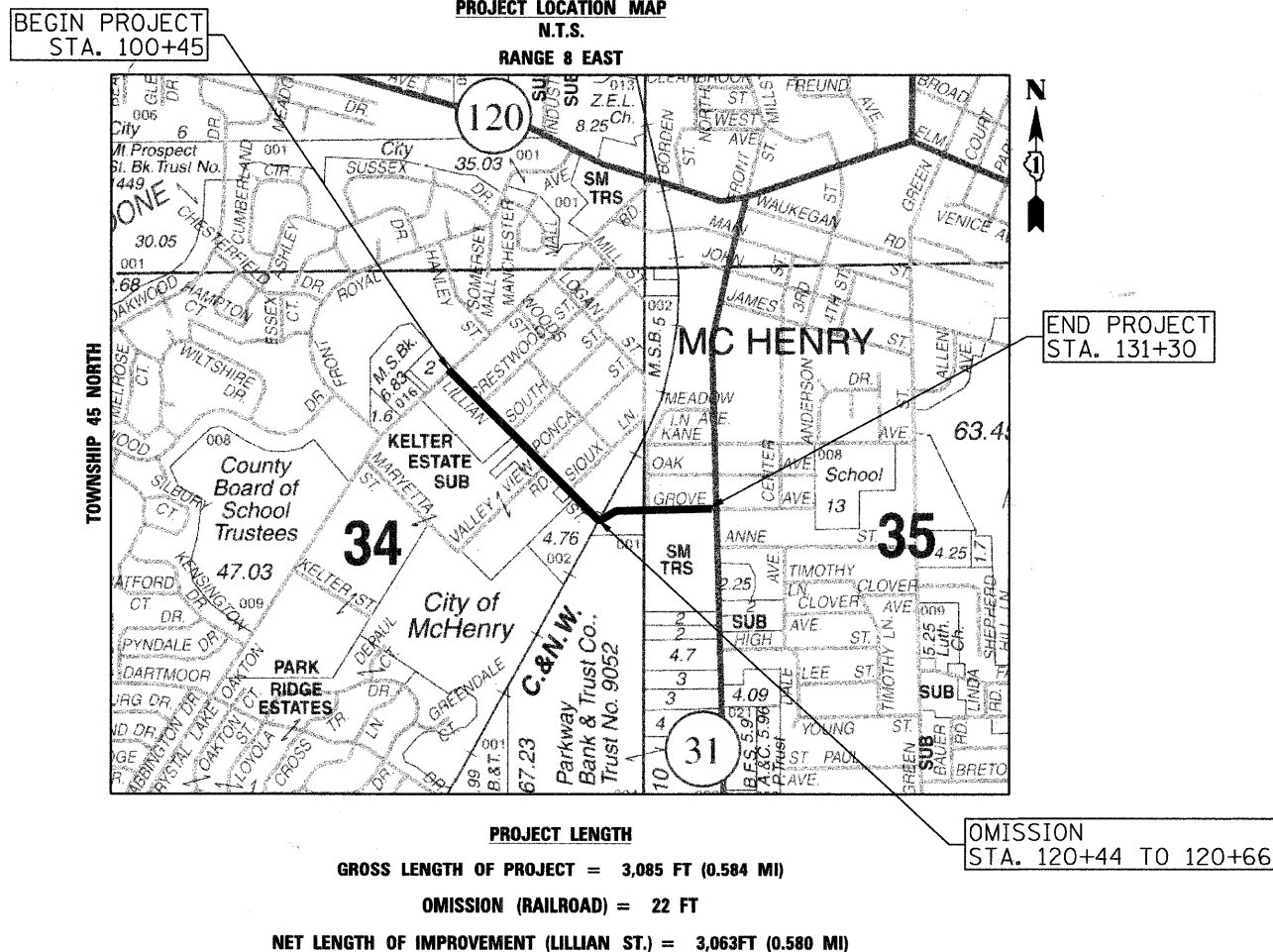
SEC Group, Inc.
 Illinois Professional Design Firm # 184-000108
 Engineering
 Surveying
 Planning
 Landscape Architecture
 McHenry • Yorkville • New Lenox • Chicago
 www.secgroupinc.com

PROJECT ENGINEER: J. ATTANASEO.
PROJECT MANAGER: A. CHAUDHRY

CONTRACT NO. 63143

ASSOCIATE FIELD ENGINEER: KEVIN STALLWORTH (847)-705-4169

COMPANY NAME: SEC GROUP, INC.
 PROJECT CONTACT: A. CHAUDHRY
 DATE PLOTTED: 3/10/2009 9:46:38 AM
 FILE NAME: 080885-cvr.dwg
 PLOT DRIVER: pdf2raster.exe
 PEN TABLE: #fonttbl;



STATE OF ILLINOIS
DEPARTMENT OF TRANSPORTATION
DIVISION OF HIGHWAYS

APPROVED March 18 2009
[Signature]
CITY OF MCHENRY

PASSED APRIL 2 2009
[Signature]
DISTRICT ONE ENGINEER OF LOCAL ROADS AND STREETS

RELEASING FOR BID
BASED ON LIMITED REVIEW April 6, 2009
[Signature]
DEPUTY DIRECTOR OF HIGHWAYS, REGION ONE ENGINEER

PROFESSIONAL ENGINEER'S SIGN & SEAL

[Signature] 3/10/2009
 JOSEPH P. ATTANASEO, P.E.
 EXPIRES: 11-30-09

SEAL

PRINTED BY THE AUTHORITY OF THE STATE OF ILLINOIS