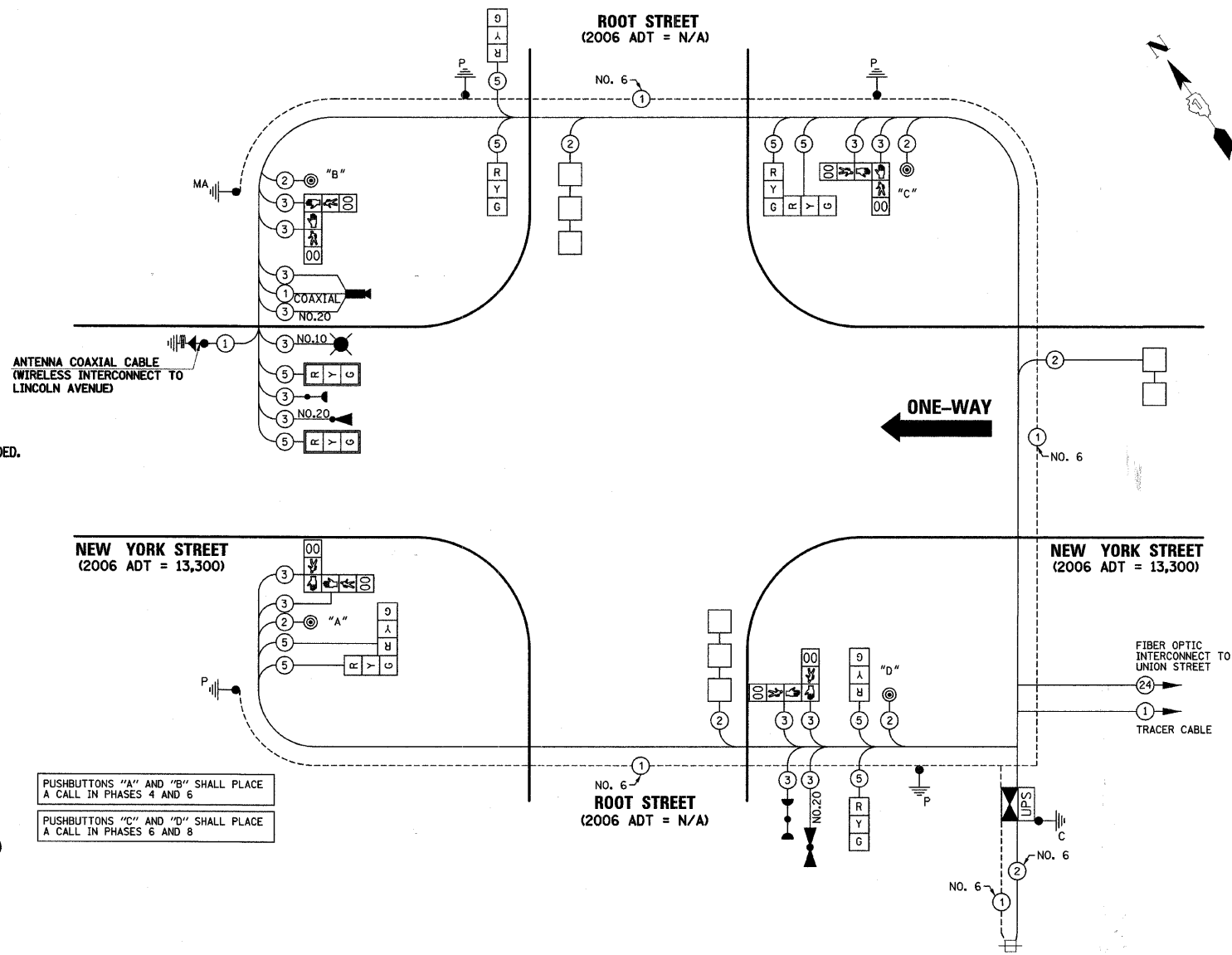


CABLE PLAN LEGEND

- | | | |
|-----------------|-----------------|---|
| EXISTING | PROPOSED | |
| | | 8" (200mm) TRAFFIC SIGNAL SECTION |
| | | 12" (300mm) TRAFFIC SIGNAL SECTION |
| | | 12" (300mm) PEDESTRIAN SIGNAL SECTION |
| | | 12" (300mm) PEDESTRIAN SIGNAL SECTION |
| | | CONTROLLER CABINET |
| | | SERVICE INSTALLATION |
| | | TELEPHONE INSTALLATION |
| | | VEHICLE DETECTOR, INDUCTION LOOP |
| | | MAGNETIC DETECTOR |
| | | EMERGENCY VEHICLE LIGHT DETECTOR |
| | | CONFIRMATION BEACON |
| | | PUSHBUTTON DETECTOR |
| | | LUMINAIRE |
| | | DENOTES NUMBER OF CONDUCTORS.
ALL CABLE NO. 14 EXCEPT AS INDICATED.
ALL LOOP DETECTOR CABLE TO BE SHIELDED. |
| | | GROUND CABLE IN CONDUIT
NO. 6 SOLID COPPER (GREEN) |
| | | FIBER OPTIC CABLE IN CONDUIT
NO. 62.5/125 2-MM12F SM12F |
| | | SIGNAL FACE WITH BACKPLATE.
"P" INDICATES PROGRAMMED HEAD. |
| | | RAILROAD CONTROL CABINET |
| | | ILLUMINATED SIGN
"NO LEFT TURN" |
| | | ILLUMINATED SIGN
"NO RIGHT TURN" |
| | | WIRELESS ANTENNA |
| | | GROUND ROD AT HANDHOLE (H),
DOUBLE HANDHOLE (H), OR CONTROLLER (C) |
| | | GROUND ROD AT POST (P)
OR MAST ARM POLE (MA) |
| | | GROUND ROD AT ELECTRIC
SERVICE INSTALLATION |
| | | UNINTERRUPTABLE POWER SUPPLY |
| | | LED STREET NAME SIGN |
| | | VIDEO DETECTION CAMERA |
| | | PAN/TILT/ZOOM CAMERA |



PUSHBUTTONS "A" AND "B" SHALL PLACE A CALL IN PHASES 4 AND 6
PUSHBUTTONS "C" AND "D" SHALL PLACE A CALL IN PHASES 6 AND 8

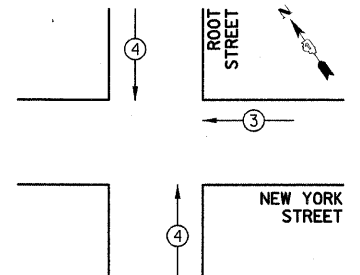
SCHEDULE OF QUANTITIES

PAY ITEM DESCRIPTION	UNIT	ROOT STREET
SIGN PANEL - TYPE 1	SQ FT	34
CONDUIT IN TRENCH, 2" DIA., GALVANIZED STEEL	FOOT	282
CONDUIT IN TRENCH, 2 1/2" DIA., GALVANIZED STEEL	FOOT	41
CONDUIT IN TRENCH, 4" DIA., GALVANIZED STEEL	FOOT	62
CONDUIT PUSHED, 2" DIA., GALVANIZED STEEL	FOOT	60
CONDUIT PUSHED, 2 1/2" DIA., GALVANIZED STEEL	FOOT	31
CONDUIT PUSHED, 4" DIA., GALVANIZED STEEL	FOOT	148
HANDHOLE	EACH	2
DOUBLE HANDHOLE	EACH	1
ELECTRIC CABLE IN CONDUIT, 600V (XLP-TYPE USE) 1/C NO. 10	FOOT	235
TRENCH AND BACKFILL FOR ELECTRICAL WORK	FOOT	459
LUMINAIRE, SODIUM VAPOR, HORIZONTAL MOUNT, 250 WATT	EACH	1
MAINTENANCE OF EXISTING TRAFFIC SIGNAL INSTALLATION	EACH	1
FULL-ACTUATED CONTROLLER AND TYPE IV CABINET (SPECIAL)	EACH	1
ELECTRIC CABLE IN CONDUIT, SIGNAL NO. 14 2C	FOOT	512
ELECTRIC CABLE IN CONDUIT, SIGNAL NO. 14 3C	FOOT	1633
ELECTRIC CABLE IN CONDUIT, SIGNAL NO. 14 5C	FOOT	1542
ELECTRIC CABLE IN CONDUIT, LEAD-IN, NO. 14 1 PAIR	FOOT	534.5
ELECTRIC CABLE IN CONDUIT, SERVICE, NO. 6 2C	FOOT	37.5
TRAFFIC SIGNAL POST, GALVANIZED STEEL 14 FT.	EACH	3
TRAFFIC SIGNAL POST, GALVANIZED STEEL 18 FT.	EACH	1
STEEL COMBINATION MAST ARM ASSEMBLY AND POLE, 28 FT.	EACH	1
CONCRETE FOUNDATION, TYPE A	FOOT	18
CONCRETE FOUNDATION, TYPE C	FOOT	4
CONCRETE FOUNDATION, TYPE E 30-INCH DIAMETER	FOOT	10
DRILL EXISTING HANDHOLE	EACH	5
SIGNAL HEAD, LED, 1-FACE, 3-SECTION, MAST ARM MOUNTED	EACH	2
SIGNAL HEAD, LED, 2-FACE, 3-SECTION, BRACKET MOUNTED	EACH	4
PEDESTRIAN SIGNAL HEAD, LED, 2-FACE, BRACKET MOUNTED WITH COUNTDOWN TIMER	EACH	4
TRAFFIC SIGNAL BACKPLATE, LOUVERED, ALUMINUM	EACH	2
INDUCTIVE LOOP DETECTOR	EACH	3
DETECTOR LOOP, TYPE I	FOOT	244.9
LIGHT DETECTOR	EACH	3
LIGHT DETECTOR AMPLIFIER	EACH	1
PEDESTRIAN PUSH-BUTTON	EACH	4
REMOVE ELECTRIC CABLE FROM CONDUIT	FOOT	2437
REMOVE EXISTING TRAFFIC SIGNAL EQUIPMENT	EACH	1
REMOVE EXISTING HANDHOLE	EACH	2
REMOVE EXISTING CONCRETE FOUNDATION	EACH	5
PAINT NEW COMBINATION MAST ARM AND POLE, UNDER 40 FEET	EACH	1
WIRELESS ETHERNET RADIO	EACH	1
PAINT TRAFFIC SIGNAL POST	EACH	4
UNINTERRUPTABLE POWER SUPPLY	EACH	1
ELECTRIC CABLE IN CONDUIT, GROUNDING, NO. 6 1C	FOOT	415
VIDEO BELDEN 8281 COAXIAL CABLE IN CONDUIT	FOOT	238
ELECTRIC CABLE IN CONDUIT, NO. 20 3C TWISTED SHIELDED	FOOT	553
GROUND EXISTING HANDHOLE FRAME AND COVER	EACH	2
INTERSECTION VIDEO TRAFFIC MONITORING SYSTEM WITH PTZ CAMERA	EACH	1

I.D.O.T TRAFFIC SIGNAL INSTALLATION ELECTRICAL SERVICE REQUIREMENTS					
TYPE	NO. LAMPS	WATTAGE		% OPERATION	TOTAL WATTAGE
		INCAND.	LED		
SIGNAL (RED)	10		17	0.50	85
(YELLOW)	10		25	0.25	62.5
(GREEN)	10		15	0.25	37.5
ARROW			12	0.10	
PED. SIGNAL	8		25	1.00	200
CONTROLLER	1		100	1.00	100
UPS	1		25	1.00	25
LUMINAIRE	1		250	0.50	125
TOTAL =					635

ENERGY COSTS TO: CITY OF AURORA
44 E. DOWNER PLACE
AURORA, ILLINOIS 60507-2067

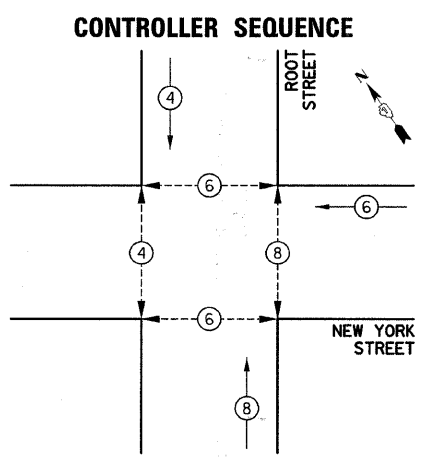
ENERGY SUPPLY CONTACT: MARK SCHERIBEL
PHONE: (630) 723-2128
COMPANY: COMMONWEALTH EDISON



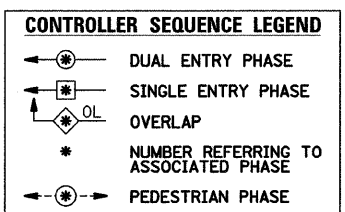
EMERGENCY VEHICLE PREEMPTION SEQUENCE

PROPOSED EMERGENCY VEHICLE PREEMPTORS	
PROPOSED EMERGENCY VEHICLE PREEMPTORS	MOVEMENT
3	4
←	↑

FOUNDATION (DEPTH)	FT. (m)	CABLE SLACK	FT. (m)	VERTICAL	FT. (m)
TYPE A - POST	4 (1.2)	HANDHOLE	6.5 (2.0)	ALL FOUNDATIONS	3.5 (1.0)
C - CONTROLLER	4 (1.2)	DOUBLE HANDHOLE	13 (4.0)	MAST ARM (L) POLE	20'-H-2=
D - CONTROLLER	4 (1.2)	SIGNAL POST	2 (1.0)		(6m+L-0.6m)
E - M.A. LENGTH		CONTROLLER CAB.	1 (0.5)	BRACKET MOUNTED	13 (4.0)
<30'	30" (900mm)	FIBER OPTIC	13 (4.0)	PED. PUSHBUTTON	4 (1.2)
<40'	30" (750mm)	ELECTRIC SERVICE	1 (0.5)	ELECTRIC SERVICE	13.5 (4.1)
<40'	36" (900mm)	GROUND CABLE	1 (0.5)	SERVICE TO GROUND	13.5 (4.1)
<50'	36" (900mm)		13 (4.0)	POST MOUNTED	6 (1.8)
≥50'	36" (900mm)		15 (4.6)		



PHASE DESIGNATION DIAGRAM



THE TRAFFIC SIGNAL CONTROL EQUIPMENT FOR THIS PROJECT SHALL BE "ECONOLITE" TO MATCH THE EXISTING ADJACENT SYSTEM.

THE EMERGENCY VEHICLE PREEMPTION EQUIPMENT FOR THIS PROJECT SHALL BE OPTICOM AS REQUIRED BY THE CITY OF AURORA.

DATE	
BY	
REVISION	
NO.	
DATE	
BY	
REVISION	
NO.	
DATE	
BY	
REVISION	
NO.	

DATE	
BY	
REVISION	
NO.	
DATE	
BY	
REVISION	
NO.	
DATE	
BY	
REVISION	
NO.	