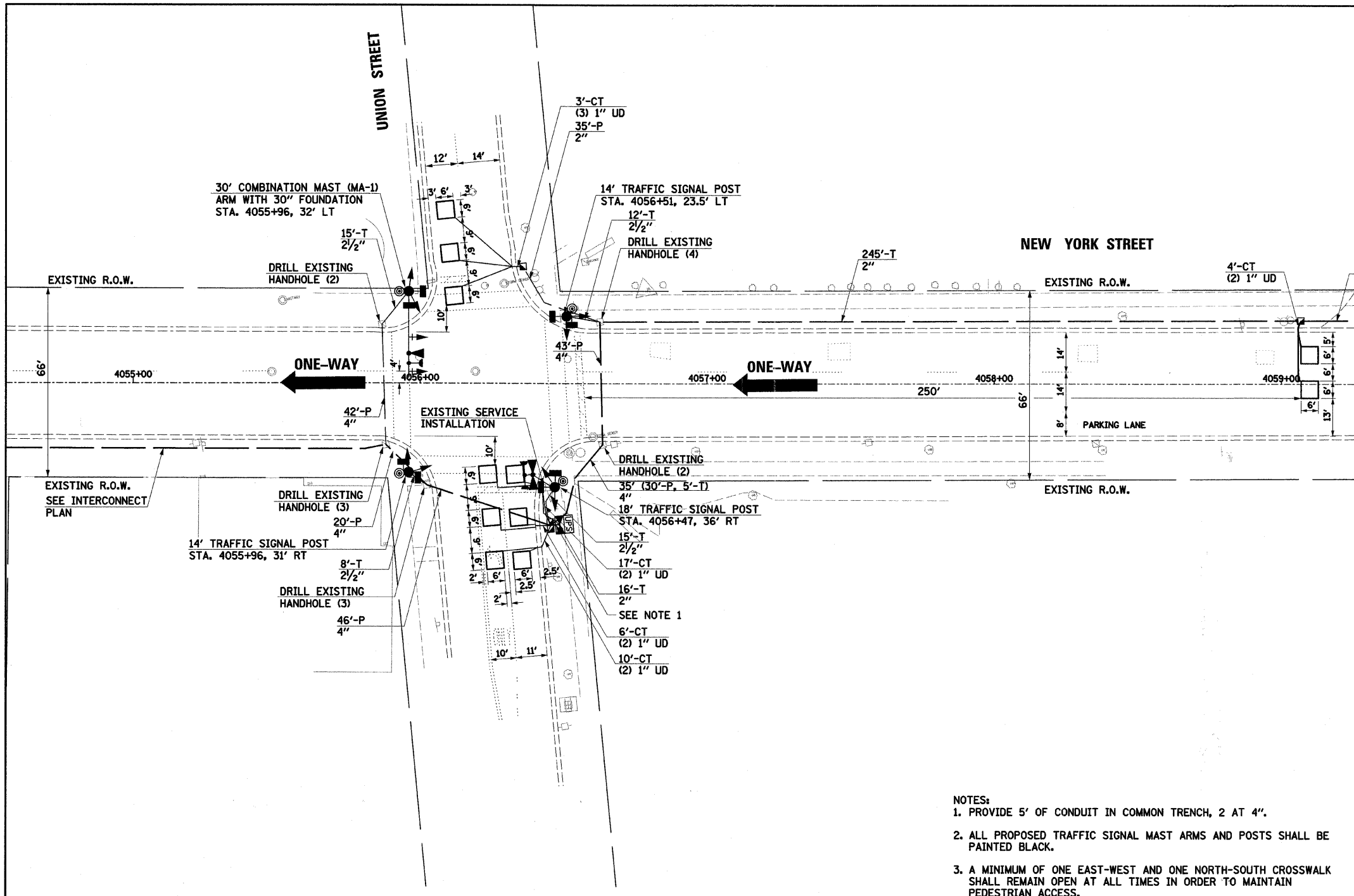


PLAN	SURVEYED	BY	DATE
	ALIGNED		
	GRADES CHECKED		
	RT. OF WAY CHECKED		
	ADD. FILE NAME		
	NOTE BOOK NO.		

PROFILE	SURVEYED	BY	DATE
	GRADES CHECKED		
	B.M. NOTED		
	STRUCTURE NOTATIONS OK'D		
	NOTE BOOK NO.		



TRAFFIC SIGNAL LEGEND

	PROPOSED	EXISTING
CONTROLLER		
SERVICE INSTALLATION		
SIGNAL HEAD		
SIGNAL HEAD WITH BACKPLATE		
SIGNAL HEAD, PEDESTRIAN		
SIGNAL POST		
MAST ARM ASSEMBLY AND POLE, STEEL		
MAST ARM ASSEMBLY AND POLE, ALUMINUM		
COMBINATION MAST ARM ASSEMBLY AND POLE, STEEL WITH LUMINAIRE		
UNIT DUCT	UD	
COMMON TRENCH	CT	
HANDHOLE		
HEAVY DUTY HANDHOLE		
DOUBLE HANDHOLE		
G.S. CONDUIT IN TRENCH (T) OR PUSHED (P)		
PEDESTRIAN PUSHBUTTON DETECTOR		
DETECTOR LOOP		
CAST IRON JUNCTION BOX		
EMERGENCY VEHICLE LIGHT DETECTOR		
CONFIRMATION BEACON		
SIGNAL HEAD OPTICALLY PROGRAMMED		
CONDUIT SPLICE		
WOOD POLE		
RACEWAY FOR MAGNETIC DETECTOR, TYPE I OR TYPE II		
VEHICLE DETECTOR, NON COMPENSATED MAGNETIC TYPE		
RAILROAD CONTROL CABINET		
TELEPHONE CONNECTION		
ILLUMINATED SIGN "NO LEFT TURN"		
ILLUMINATED SIGN "NO RIGHT TURN"		
UNINTERRUPTABLE POWER SUPPLY		
WIRELESS ANTENNA		
VIDEO DETECTION CAMERA		
VIDEO DETECTION AREA		
PAN/TILT/ZOOM CAMERA		

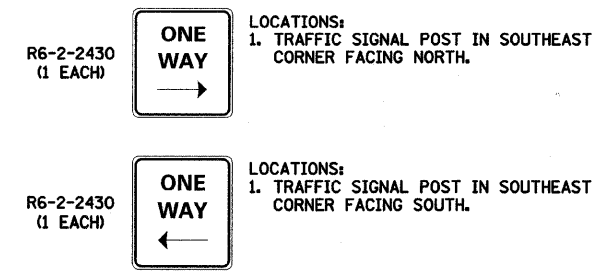
- NOTES:**
1. PROVIDE 5' OF CONDUIT IN COMMON TRENCH, 2 AT 4".
 2. ALL PROPOSED TRAFFIC SIGNAL MAST ARMS AND POSTS SHALL BE PAINTED BLACK.
 3. A MINIMUM OF ONE EAST-WEST AND ONE NORTH-SOUTH CROSSWALK SHALL REMAIN OPEN AT ALL TIMES IN ORDER TO MAINTAIN PEDESTRIAN ACCESS.

THE TRAFFIC SIGNAL CONTROL EQUIPMENT FOR THIS PROJECT SHALL BE "ECONOLITE" TO MATCH THE EXISTING ADJACENT SYSTEM.

THE EMERGENCY VEHICLE PREEMPTION EQUIPMENT FOR THIS PROJECT SHALL BE OPTICOM AS REQUIRED BY THE CITY OF AURORA.

RESTORATION OF WORK AREA:
 RESTORATION OF THE TRAFFIC SIGNAL WORK AREA SHALL BE INCIDENTAL TO THE RELATED PAY ITEM SUCH AS FOUNDATION, CONDUIT, HANDHOLE, TRENCH AND BACKFILL, ETC., AND NO EXTRA COMPENSATION SHALL BE ALLOWED. ALL ROADWAY SURFACES SUCH AS SHOULDERS, MEDIANS, SIDEWALKS, PAVEMENT, ETC. SHALL BE REPLACED IN KIND. ALL DAMAGE TO MOWED LAWNS SHALL BE REPLACED WITH AN APPROVED SOD, AND ALL DAMAGE TO UNMOWED FIELDS SHALL BE SEEDED IN ACCORDANCE WITH STANDARD SPECIFICATIONS 252 AND 250 RESPECTIVELY.

PROPOSED TRAFFIC SIGNS



FILE NAME =	USER NAME = .USER.	DESIGNED -	REVISED -	STATE OF ILLINOIS DEPARTMENT OF TRANSPORTATION	TRAFFIC SIGNAL MODIFICATION PLAN UNION STREET		F.A. RTE.	SECTION	COUNTY	TOTAL SHEETS	SHEET NO.		
g:\jobs\smith\2007\0706\90 auro - traffic	signals\0706\90\04 auro new york st. traffic	DRAWN by BAH	REVISED union.dgn					07-00267-00-TL	KANE	48	25		
	PLOT SCALE = #SCALE#	CHECKED APS	REVISED				CONTRACT NO. 63152						
	PLOT DATE = 4/15/2009	DATE	REVISED				SCALE:	SHEET NO.	OF	SHEETS	STA.	TO	STA.